

**NEW MEXICO OIL CONSERVATION COMMISSION
WELL LOCATION AND ACREAGE DEDICATION PLAT**

Form C-102
Supersedes C-128
Effective 1-1-65

All distances must be from the outer boundaries of the Section.

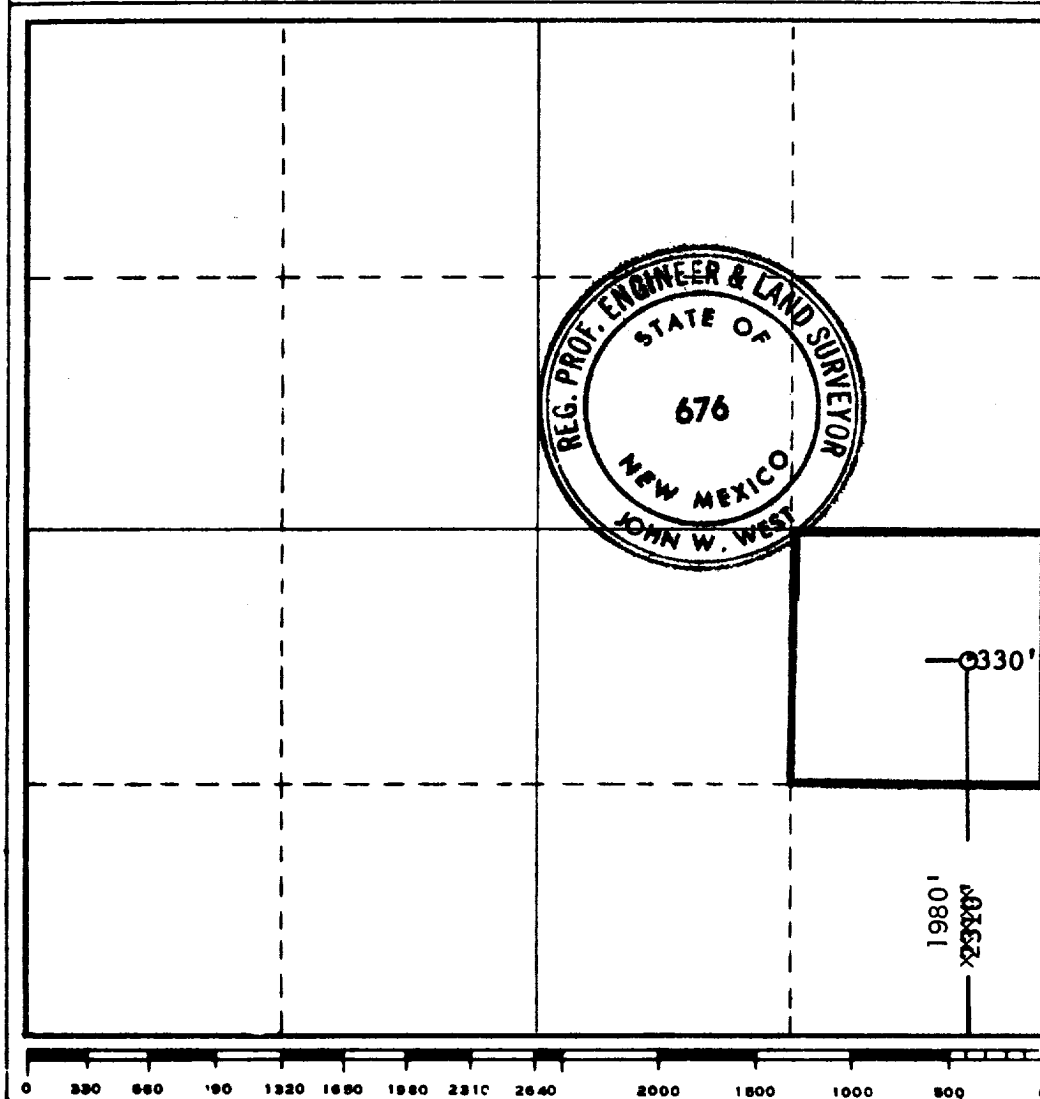
| | | | | | |
|---|--|--------------------------------|---------------------------------------|----------------------|----------------------|
| Operator TOM L. INGRAM | | | Lease T. P. STATE | | Well No. 2 |
| Unit Letter I | Section 24 | Township 17 SOUTH | Range 35 EAST | County LEA | |
| Actual Footage Location of Well: <div style="display: flex; justify-content: space-between;"> 1980 feet from the SOUTH line and 330 feet from the EAST line </div> | | | | | |
| Ground Level Elev. 3898.6 | Producing Formation ABO REEF | Pool VACUUM ABO REEF | Dedicated Acreage: 40 Acres | | |

1. Outline the acreage dedicated to the subject well by colored pencil or hachure marks on the plat below.
2. If more than one lease is dedicated to the well, outline each and identify the ownership thereof (both as to working interest and royalty).
3. If more than one lease of different ownership is dedicated to the well, have the interests of all owners been consolidated by communitization, unitization, force-pooling, etc?

☐ Yes ☐ No If answer is "yes," type of consolidation _____

If answer is "no," list the owners and tract descriptions which have actually been consolidated. (Use reverse side of this form if necessary.) _____

No allowable will be assigned to the well until all interests have been consolidated (by communitization, unitization, forced-pooling, or otherwise) or until a non-standard unit, eliminating such interests, has been approved by the Commission.



CERTIFICATION

I hereby certify that the information contained herein is true and complete to the best of my knowledge and belief.

Name Tom L. Ingram
 Position Operator
 Company TOM L. INGRAM
 Date November 18, 1971

I hereby certify that the well location shown on this plat was plotted from field notes of actual surveys made by me or under my supervision, and that the same is true and correct to the best of my knowledge and belief.

Date Surveyed
NOV. 16, 1971
 Registered Professional Engineer
 and/or Land Surveyor

John W. West
 Certificate No. **676**

173

RECEIVED

DEC 15 1971
OIL CONSERVATION COMM.
HOBBS, N. M.