

NO. OF COPIES RECEIVED

DISTRIBUTION

SANTA FE

FILE

U.S.G.S.

LAND OFFICE

OPERATOR

NEW MEXICO OIL CONSERVATION COMMISSION

Form C-101  
Revised 1-1-65

30-025-23912

5A. Indicate Type of Lease  
STATE ☒ FEE ☐

5. State Oil & Gas Lease No.  
B-1040

APPLICATION FOR PERMIT TO DRILL, DEEPEN, OR PLUG BACK

1a. Type of Work  
b. Type of Well DRILL ☒ DEEPEN ☐ PLUG BACK ☐  
OIL WELL ☒ GAS WELL ☐ OTHER ☐ SINGLE ZONE ☒ MULTIPLE ZONE ☐

2. Name of Operator  
Mobil Oil Corporation

3. Address of Operator  
P. O. Box 633, Midland, Texas, 79701

4. Location of Well UNIT LETTER N LOCATED 460 FEET FROM THE South LINE  
AND 1980 FEET FROM THE West LINE OF SEC. 23 TWP. 17S RGE. 34E NMPM

7. Unit Agreement Name

8. Farm or Lease Name  
State KK

9. Well No.  
1

10. Field and Pool, or Wildcat  
North Vacuum

12. County  
Lea

19. Proposed Depth  
8700

19A. Formation  
Abo

20. Rotary or C.T.  
Rotary

21. Elevations (Show whether Dr, RT, etc.)  
4013 GROUND

21A. Kind & Status Plug. Bond  
On File

21B. Drilling Contractor  
Unknown

22. Approx. Date Work will start  
December 15, 1971

PROPOSED CASING AND CEMENT PROGRAM

SIZE OF HOLE	SIZE OF CASING	WEIGHT PER FOOT	SETTING DEPTH	SACKS OF CEMENT	EST. TOP
15"	12-3/4"	34#	250	Circulate	Surface
11"	8-5/8"	28#	3035	Circulate	Surface
7-7/8"	5-1/2"	17#	8'00	Circulate	Surface

THE COMMISSION MUST BE NOTIFIED  
24 HOURS PRIOR TO RUNNING 12 3/4  
CASING.

APPROVAL VALID  
FOR 90 DAYS UNLESS  
DRILLING COMMENCED,  
EXPIRES 3-13-72

IN ABOVE SPACE DESCRIBE PROPOSED PROGRAM: IF PROPOSAL IS TO DEEPEN OR PLUG BACK, GIVE DATA ON PRESENT PRODUCTIVE ZONE AND PROPOSED NEW PRODUCTIVE ZONE. GIVE BLOWOUT PREVENTER PROGRAM, IF ANY.

I hereby certify that the information above is true and complete to the best of my knowledge and belief.

Signed A. D. Bond A. D. Bond Title Proration Staff Assistant Date December 10, 1971

APPROVED BY [Signature] TITLE SUPERVISOR DISTRICT I DATE DEC 13 1971

CONDITIONS OF APPROVAL, IF ANY:

**RECEIVED**

DEC 13 1971

OIL CONSERVATION COMM.  
HOBBS, N. M.

NEW MEXICO OIL CONSERVATION COMMISSION  
WELL LOCATION AND ACREAGE DEDICATION PLAT

Form C-102  
Supersedes C-128  
Effective 1-1-65

All distances must be from the outer boundaries of the Section.

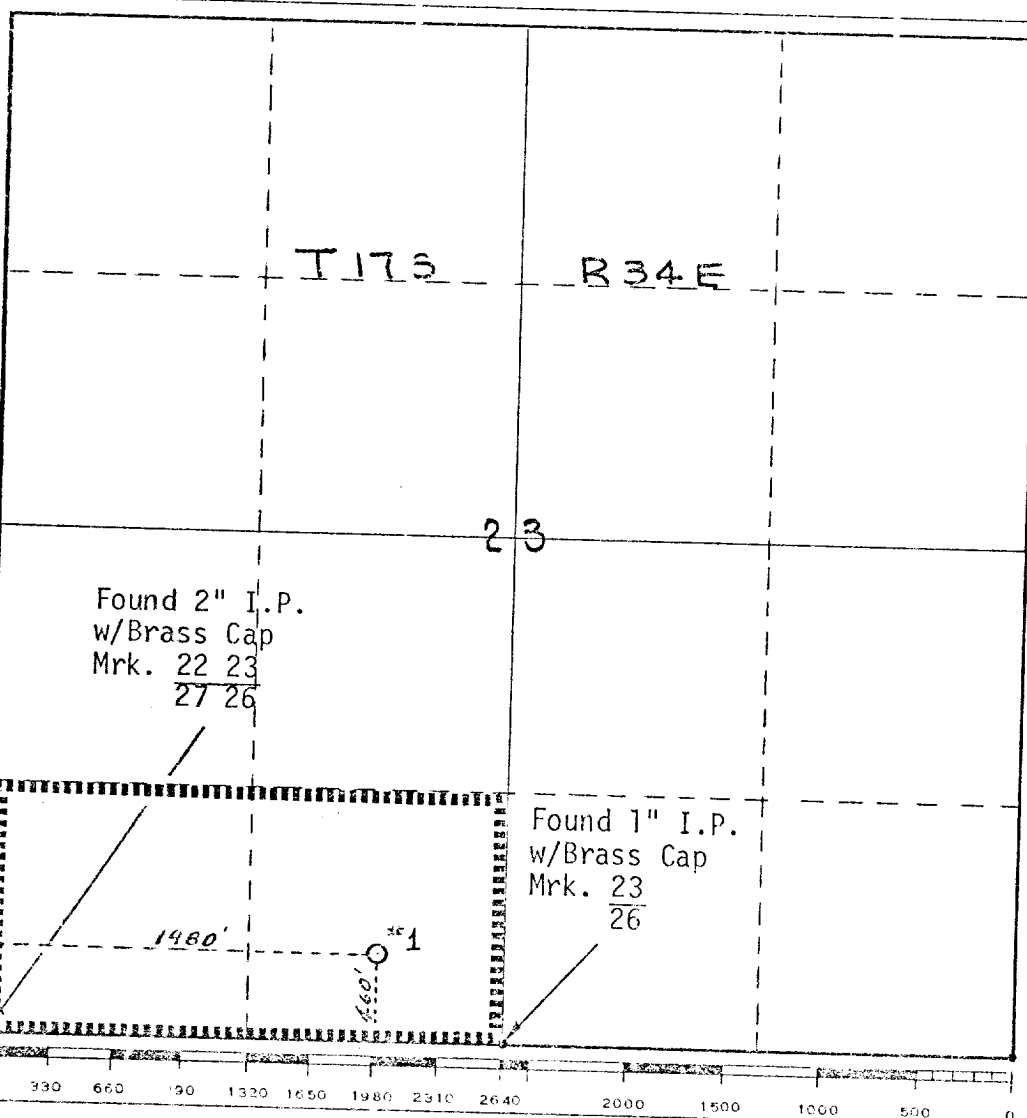
Operator <b>Mobil Oil Corporation</b>			Lease <b>State KK</b>		Well No. <b>1</b>
Unit Letter <b>N</b>	Section <b>23</b>	Township <b>17S</b>	Range <b>34E</b>	County <b>Lea</b>	
Actual Footage Location of Well: <b>460</b> feet from the <b>South</b> line and <b>1980</b> feet from the <b>West</b> line					
Ground Level Elev. <b>4013 GR</b>	Producing Formation <b>Abo</b>	Pool <b>North Vacuum</b>			Dedicated Acreage <b>80</b> Acres

1. Outline the acreage dedicated to the subject well by colored pencil or hatchure marks on the plat below.
2. If more than one lease is dedicated to the well, outline each and identify the ownership thereof (both as to working interest and royalty).
3. If more than one lease of different ownership is dedicated to the well, have the interests of all owners been consolidated by communitization, unitization, force-pooling, etc?

☐ Yes ☐ No If answer is "yes," type of consolidation \_\_\_\_\_

If answer is "no," list the owners and tract descriptions which have actually been consolidated. (Use reverse side of this form if necessary.) \_\_\_\_\_

No allowable will be assigned to the well until all interests have been consolidated (by communitization, unitization, forced-pooling, or otherwise) or until a non-standard unit, eliminating such interests, has been approved by the Commission.



CERTIFICATION

I hereby certify that the information contained herein is true and complete to the best of my knowledge and belief.

*A. D. Bond*  
Name  
**A. D. Bond**  
Position  
**Proration Staff Assistant**  
Company  
**Mobil Oil Corporation**  
Date  
**December 10, 1971**

I hereby certify that the well location shown on this plat was plotted from field notes of actual surveys made by me or under my supervision, and that the same is true and correct to the best of my knowledge and belief.

Date Surveyed  
**December 10, 1971**  
Registered Professional Engineer and/or Land Surveyor  
*J. F. Godfrey, Jr.*  
**J. F. Godfrey, Jr.**  
Certificate No.  
**2663**

113

RECEIVED

DEC 13 1971

OIL CONSERVATION COMM.  
HOBBS, N. M.