

NO. OF COPIES RECEIVED	
DISTRIBUTION	
SANTA FE	
FILE	
U.S.G.S.	
LAND OFFICE	
OPERATOR	

# NEW MEXICO OIL CONSERVATION COMMISSION

Form C-101  
Revised 1-1-65 **30-025-23996**

5A. Indicate Type of Lease STATE <input checked="" type="checkbox"/> FEE <input type="checkbox"/>
5. State Oil & Gas Lease No. <b>B-1527</b>
7. Unit Agreement Name
8. Farm or Lease Name <b>State JJ</b>
9. Well No. <b>1</b>
10. Field and Pool, or Wildcat <b>Undesignated</b>
12. County <b>Lea</b>
19. Proposed Depth <b>880'</b>
19A. Formation <b>Abo</b>
20. Rotary or C.T. <b>Rotary</b>
21. Elevations (Show whether DE, RT, etc.) <b>4017.9 GROUND</b>
21A. Kind & Status Plug. Bond <b>On File</b>
21B. Drilling Contractor <b>Unknown</b>
22. Approx. Date Work will start <b>January 14, 1972</b>

APPLICATION FOR PERMIT TO DRILL, DEEPEN, OR PLUG BACK					
1a. Type of Work DRILL <input checked="" type="checkbox"/> DEEPEN <input type="checkbox"/> PLUG BACK <input type="checkbox"/>					
b. Type of Well OIL WELL <input checked="" type="checkbox"/> GAS WELL <input type="checkbox"/> OTHER <input type="checkbox"/> SINGLE ZONE <input checked="" type="checkbox"/> MULTIPLE ZONE <input type="checkbox"/>					
2. Name of Operator <b>Mobil Oil Corporation</b>					
3. Address of Operator <b>P. O. Box 633, Midland, Texas, 79701</b>					
4. Location of Well UNIT LETTER <b>L</b> LOCATED <b>1993</b> FEET FROM THE <b>South</b> LINE AND <b>660</b> FEET FROM THE <b>West</b> LINE OF SEC. <b>7</b> TWP. <b>17S</b> RGE. <b>35E</b> NMPM					
23. PROPOSED CASING AND CEMENT PROGRAM					

SIZE OF HOLE	SIZE OF CASING	WEIGHT PER FOOT	SETTING DEPTH	SACKS OF CEMENT	EST. TOP
15"	12-3/4	34#	250	Circulate	Surface
11"	8-5/8	28#	3070	Circulate	Surface
7-7/8"	5-1/2	17#	8300	Circulate	Surface

THE COMMISSION MUST BE NOTIFIED  
24 HOURS PRIOR TO RUNNING **12/3/71**  
CASING.

APPROVAL VALID  
FOR 90 DAYS UNLESS  
DRILLING COMMENCED,

APPROVAL VALID  
FOR 90 DAYS UNLESS  
DRILLING COMMENCED,  
EXPIRES **3-27-72**

IN ABOVE SPACE DESCRIBE PROPOSED PROGRAM: IF PROPOSAL IS TO DEEPEN OR PLUG BACK, GIVE DATA ON PRESENT PRODUCTIVE ZONE AND PROPOSED NEW PRODUCTIVE ZONE. GIVE BLOWOUT PREVENTER PROGRAM, IF ANY.

I hereby certify that the information above is true and complete to the best of my knowledge and belief.

Signed **A. D. Bond** A. D. Bond Title **Proration Staff Assistant** Date **December 17, 1971**

(This space for State Use)

APPROVED BY **[Signature]** TITLE **SUPERVISOR DISTRICT I** DATE **DEC 27 1971**  
CONDITIONS OF APPROVAL, IF ANY:

RECEIVED

17 201971

OIL CONSERVATION COMM.  
HOOVER 11-14

**NEW MEXICO OIL CONSERVATION COMMISSION**  
**WELL LOCATION AND ACREAGE DEDICATION PLAT**

Form C-102  
 Supersedes C-128  
 Effective 1-1-65

All distances must be from the outer boundaries of the Section.

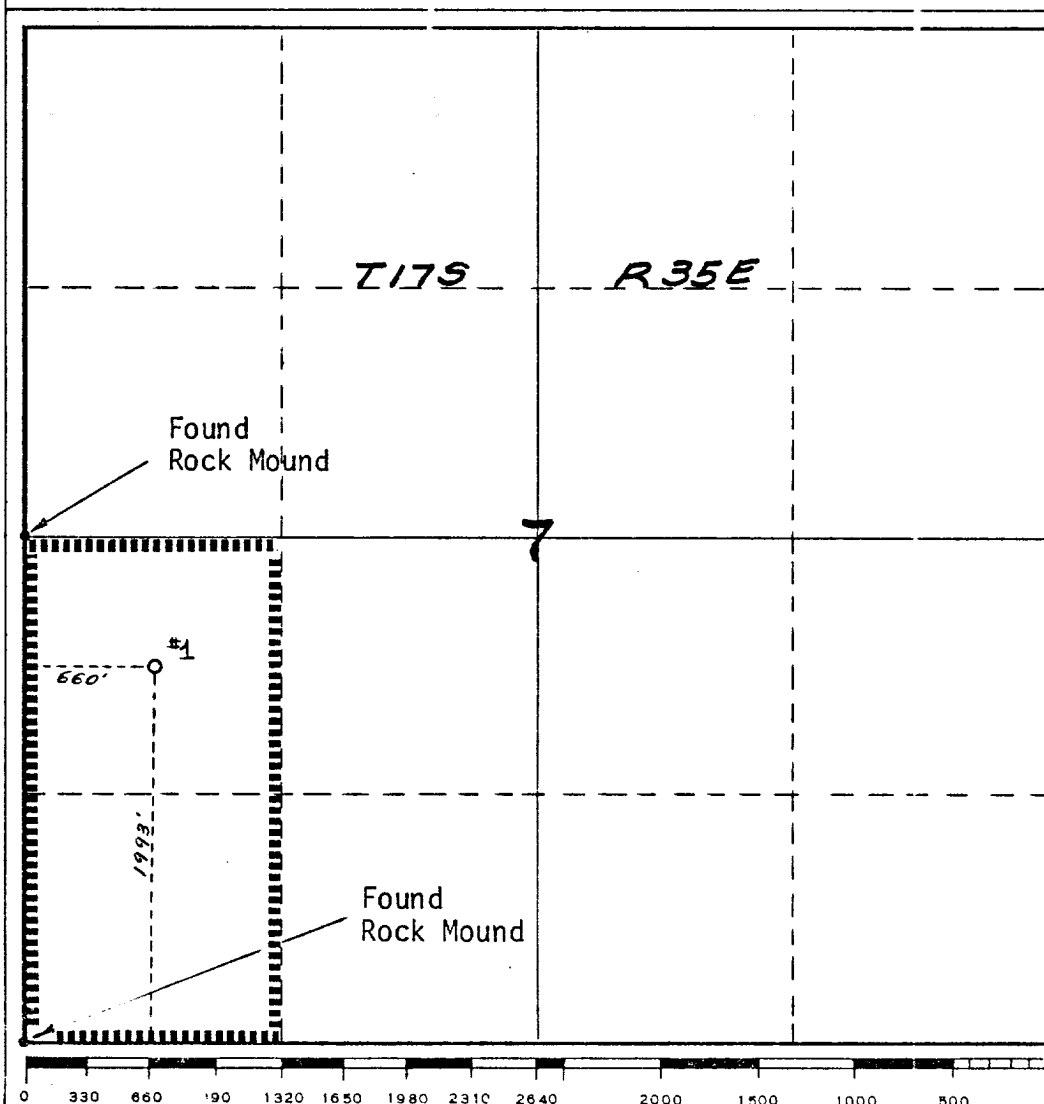
Operator <b>Mobil Oil Corporation</b>			Lease <b>State JJ</b>		Well No. <b>1</b>
Unit Letter <b>L</b>	Section <b>7</b>	Township <b>17S</b>	Range <b>35E</b>	County <b>Lea</b>	
Actual Footage Location of Well: <b>1993</b> feet from the <b>South</b> line and <b>660</b> feet from the <b>West</b> line					
Ground Level Elev: <b>4017.9</b>	Producing Formation <b>Abo</b>		Pool <b>Undesignated</b>		Dedicated Acreage: <b>75.18</b> Acres

1. Outline the acreage dedicated to the subject well by colored pencil or hachure marks on the plat below.
2. If more than one lease is dedicated to the well, outline each and identify the ownership thereof (both as to working interest and royalty).
3. If more than one lease of different ownership is dedicated to the well, have the interests of all owners been consolidated by communitization, unitization, force-pooling, etc?

☐ Yes    ☐ No    If answer is "yes," type of consolidation \_\_\_\_\_

If answer is "no," list the owners and tract descriptions which have actually been consolidated. (Use reverse side of this form if necessary.) \_\_\_\_\_

No allowable will be assigned to the well until all interests have been consolidated (by communitization, unitization, forced-pooling, or otherwise) or until a non-standard unit, eliminating such interests, has been approved by the Commission.



**CERTIFICATION**

*I hereby certify that the information contained herein is true and complete to the best of my knowledge and belief.*

*A. D. Bond*

Name  
**A. D. Bond**  
 Position  
**Proration Staff Assistant**  
 Company  
**Mobil Oil Corporation**  
 Date  
**December 17, 1971**

*I hereby certify that the well location shown on this plat was plotted from field notes of actual surveys made by me or under my supervision, and that the same is true and correct to the best of my knowledge and belief.*

Surveyed  
**December 18, 1971**  
 Registered Professional Engineer and Land Surveyor  
**WILSON D. WATSON, JR.**

**Wilson D. Watson, Jr.**

Certificate No.

**3959**

W. S. 1000

RECEIVED

2. 1971

OIL CONSERVATION COMM.  
MAY 11 1964