

UNITED STATES  
DEPARTMENT OF THE INTERIOR  
GEOLOGICAL SURVEY

APPLICATION FOR PERMIT TO DRILL, DEEPEN, OR PLUG BACK

1a. TYPE OF WORK

DRILL ☒

DEEPEN ☐

PLUG BACK ☐

b. TYPE OF WELL

OIL WELL ☒

GAS WELL ☐

OTHER ☐

SINGLE ZONE ☒

MULTIPLE ZONE ☐

2. NAME OF OPERATOR

Amoco Production Company

3. ADDRESS OF OPERATOR

BOX 68, HOBBS, N. M. 88240

4. LOCATION OF WELL (Report location clearly and in accordance with any State requirements.)\*

At surface

1830' FSL x 660' FWL Sec. 26 (UNIT 4, NW 1/4 SW 1/4)

At proposed prod. zone

14. DISTANCE IN MILES AND DIRECTION FROM NEAREST TOWN OR POST OFFICE\*

15. DISTANCE FROM PROPOSED\*

LOCATION TO NEAREST PROPERTY OR LEASE LINE, FT. (Also to nearest drilg. unit line, if any)

18. DISTANCE FROM PROPOSED LOCATION\* TO NEAREST WELL, DRILLING, COMPLETED, OR APPLIED FOR, ON THIS LEASE, FT.

16. NO. OF ACRES IN LEASE

19. PROPOSED DEPTH

3600'

17. NO. OF ACRES ASSIGNED TO THIS WELL

40

20. ROTARY OR CABLE TOOLS

ROTARY

21. ELEVATIONS (Show whether DF, RT, GR, etc.)

22. APPROX. DATE WORK WILL START\*

23.

PROPOSED CASING AND CEMENTING PROGRAM

SIZE OF HOLE	SIZE OF CASING	WEIGHT PER FOOT	SETTING DEPTH	QUANTITY OF CEMENT
12 1/4"	9 5/8"	32.3 #	1300'	Circulate
8 3/4"	7"	20-23 #	3300'	50 SXX
6 1/4"	4 1/2" LINEP	9.5 #	3110- TD	SUFFICIENT TO FILL BACK OF LINER.

\* If commercial well indicated by samples, logs & tests, 7" casing will be perforated above top of liner and cement circulated behind 7" salt string to meet requirements of NMOC Rule 111A. Perforations and stimulations of pay zone will be made in attempting commercial production.

NOTIFY USGS AT SUFFICIENT TIME TO

WITNESSES CEMENTING OF THE CASING,

Well to be drilled in accordance w/ Rule 111A.

IN ABOVE SPACE DESCRIBE PROPOSED PROGRAM: If proposal is to deepen or plug back, give data on present productive zone and proposed new productive zone. If proposal is to drill or deepen directionally, give pertinent data on subsurface locations and measured and true vertical depths. Give blowout preventer program, if any.

24.

SIGNED

TITLE

AREA SUPERINTENDENT

DATE MAR 30 1972

(This space for Federal or State office use)

PERMIT NO.

APPROVAL DATE

APPROVED BY

CONDITIONS OF APPROVAL, IF ANY:

TITLE

DATE

APPROVED

MAR 30 1972

ARTHUR R. BROWN  
DISTRICT ENGINEER

\*See Instructions On Reverse Side

46 USGS-14  
1- DIV  
1- SUS P  
1- RRY  
1- US POTASH & CHEM CO.  
1- HARROUN & HAYWORTH

**RECEIVED**

**APR 1972**

**OIL CONSERVATION COMM.  
HOBBS, N. M.**

NEW CO OIL CONSERVATION COMMISSION  
WELL LOCATION AND ACREAGE DEDICATION PLAT

Form C-102  
Supersedes C-128  
Effective 1-1-65

All distances must be from the outer boundaries of the Section

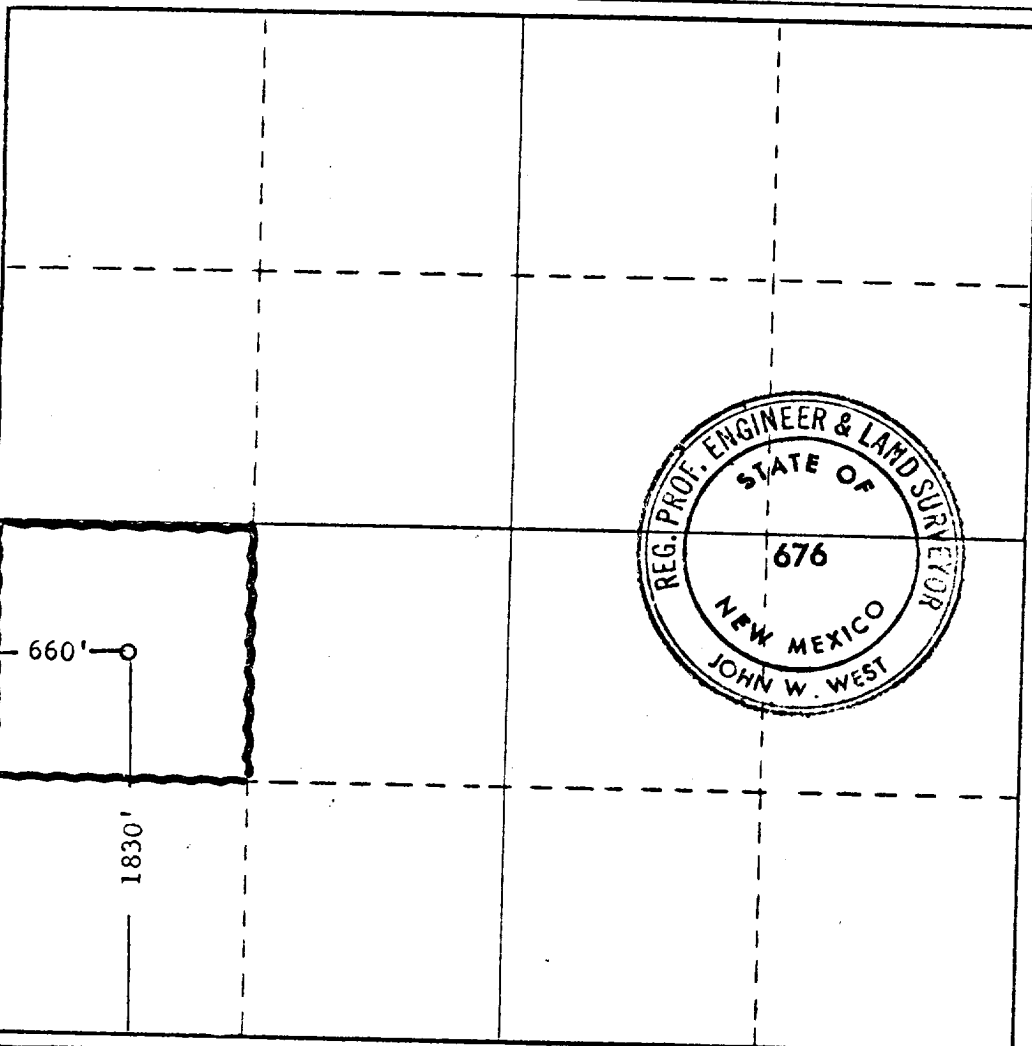
Operator <b>AMOCO PRODUCTION COMPANY</b>			Lease <b>BATE FEDERAL</b>		Well No. <b>2</b>
Plot Letter <b>L</b>	Section <b>26</b>	Township <b>19 SOUTH</b>	Range <b>33 E</b>	County <b>LEA</b>	
Actual Footage Location of Well: <b>1830</b> feet from the <b>SOUTH</b> line and <b>660</b> feet from the <b>WEST</b> line					
Ground Level Elev.	Producing Formation <b>YATES</b>		Pool <b>EAST GEM YATES (EXT)</b>	Dedicated Acreage: <b>40</b> Acres	

1. Outline the acreage dedicated to the subject well by colored pencil or hachure marks on the plat below.
2. If more than one lease is dedicated to the well, outline each and identify the ownership thereof (both as to working interest and royalty).
3. If more than one lease of different ownership is dedicated to the well, have the interests of all owners been consolidated by communitization, unitization, force-pooling, etc?

☐ Yes ☐ No If answer is "yes," type of consolidation \_\_\_\_\_

If answer is "no," list the owners and tract descriptions which have actually been consolidated. (Use reverse side of this form if necessary.) \_\_\_\_\_

No allowable will be assigned to the well until all interests have been consolidated (by communitization, unitization, forced-pooling, or otherwise) or until a non-standard unit, eliminating such interests, has been approved by the Commission.



CERTIFICATION

I hereby certify that the information contained herein is true and complete to the best of my knowledge and belief.

Name \_\_\_\_\_

Position

**AREA SUPERINTENDENT**

Company

**Amoco Production Company**

Date

**MAR 30 1972**

I hereby certify that the well location shown on this plat was plotted from field notes of actual surveys made by me or under my supervision, and that the same is true and correct to the best of my knowledge and belief.

Date Surveyed

**3-8-1972**

Registered Professional Engineer and/or Land Surveyor

*John W. West*  
Certificate No. **676**



**RECEIVED**

**APR 1 1972**

**OIL CONSERVATION COMM.  
HOBBS, N. M.**