

NO. OF COPIES RECEIVED	
DISTRIBUTION	
SANTA FE	
FILE	
U.S.G.S.	
LAND OFFICE	
OPERATOR	

NEW MEXICO OIL CONSERVATION COMMISSION

Form C-101
Revised 1-1-65

5A. Indicate Type of Lease	
STATE <input checked="" type="checkbox"/>	FEE <input type="checkbox"/>
5. State Oil & Gas Lease No.	
B-1527-2	

APPLICATION FOR PERMIT TO DRILL, DEEPEN, OR PLUG BACK

1a. Type of Work		7. Unit Agreement Name	
b. Type of Well OIL WELL <input checked="" type="checkbox"/> GAS WELL <input type="checkbox"/> OTHER <input type="checkbox"/>		8. Farm or Lease Name State A Com	
2. Name of Operator Mobil Oil Corporation		9. Well No. 1	
3. Address of Operator P. O. Box 633, Midland, Texas, 79701		10. Field and Pool, or Wildcat Undesignated	
4. Location of Well UNIT LETTER N LOCATED 660 FEET FROM THE South LINE AND 2380 FEET FROM THE west LINE OF SEC. 7 TWP. 17S RGE. 35E NMPM		12. County Lea	
13. Proposed Depth 8800		19A. Formation Abo	
21. Elevations (Show whether DF, RT, etc.) 4011.7		20. Rotary or C.T. Rotary	
21A. Kind & Status Plug. Bond On file		22. Approx. Date Work will start	

23.

PROPOSED CASING AND CEMENT PROGRAM

SIZE OF HOLE	SIZE OF CASING	WEIGHT PER FOOT	SETTING DEPTH	SACKS OF CEMENT	EST. TOP
15"	12 3/4"	34#	250'	Circulate	Surface
11"	8 5/8"	28#	3220'	"	"
7 7/8"	5 1/2"	17#	8800'	"	"

Unorthodox location approved by Administrative Order
NSL-547 dated April 11, 1972.

APPROVAL VALID
FOR 90 DAYS UNLESS
RENEWED
EXPIRES 7-26-72

IN ABOVE SPACE DESCRIBE PROPOSED PROGRAM: IF PROPOSAL IS TO DEEPEN OR PLUG BACK, GIVE DATA ON PRESENT PRODUCTIVE ZONE AND PROPOSED NEW PRODUCTIVE ZONE. GIVE BLOWOUT PREVENTER PROGRAM, IF ANY.

I hereby certify that the information above is true and complete to the best of my knowledge and belief.

Signed A.D. Bond Title Pror. Staff Assistant Date April 24, 1972

(This space for State Use)

APPROVED BY [Signature] TITLE SUPERVISOR DISTRICT 1 DATE APR 26 1972

CONDITIONS OF APPROVAL, IF ANY:

RECEIVED

APR 25 1972

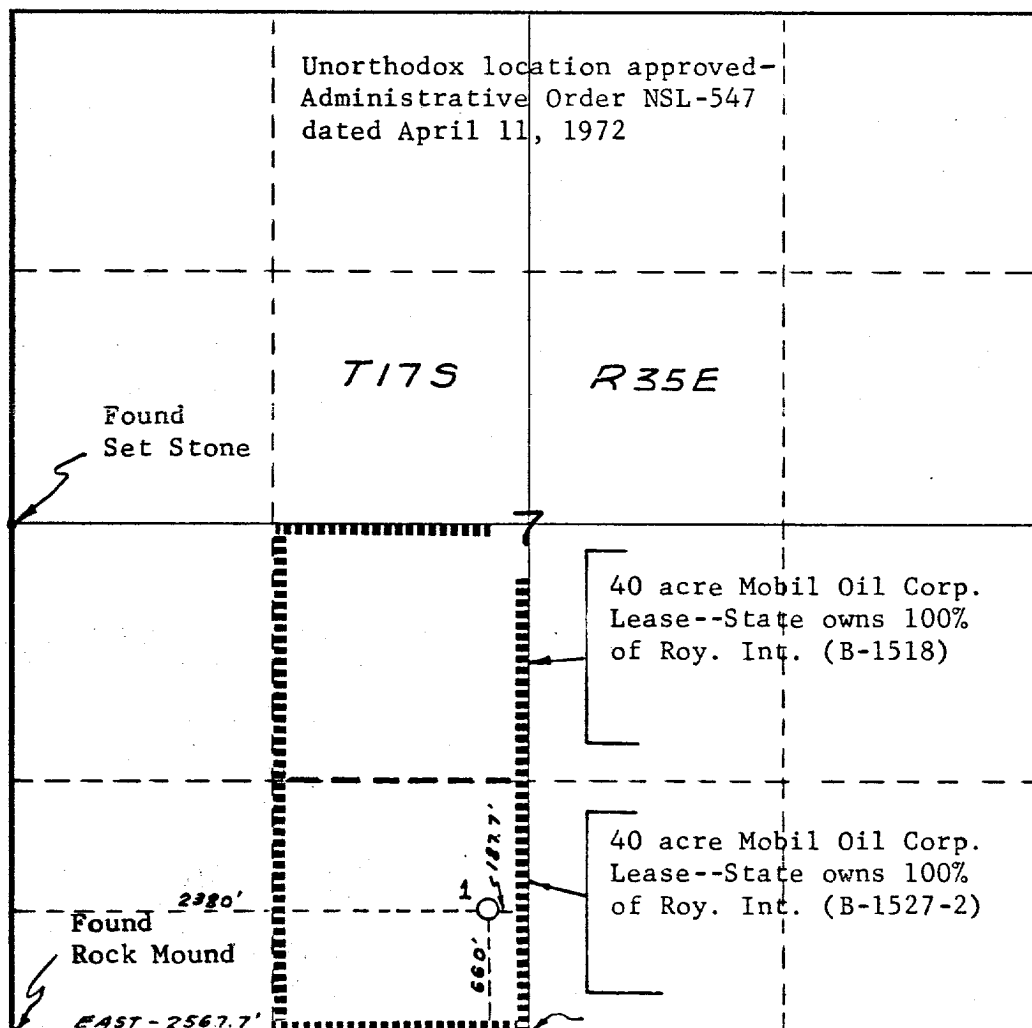
OIL CONSERVATION COMM.
HOBBS, N. M.

Form C-102
Supersedes C-122
Effective 1-1-55

Operator Mobil Oil Corporation		Lease State A Com		Well No. 1	
Unit Letter N	Section 7	Township 17S	Range 35E	County Lea	
Actual Footage Location of Well: 660 feet from the South line and 2380 feet from the West line					
Ground Level Elev: 4011.7	Producing Formation Abo	Pool Undesignated		Dedicated Acreage 80 Acres	

- ☐ Yes ☐ No If answer is "yes," type of consolidation _____

No allowable will be assigned to the well until all interests have been consolidated (by communitization, unitization, forced-pooling, or otherwise) or until a non-standard unit, eliminating such interests, has been approved by the Commission.



I hereby certify that the information contained herein is true and complete to the best of my knowledge and belief.

A. D. Bond
Name
A. D. Bond
Position
Proration Staff Assistant
Company
Mobil Oil Corporation
Date
April 24, 1972

I hereby certify that the well location shown on this plat was plotted from field notes of actual surveys made by me or under my supervision and that the same is true and correct to the best of my knowledge and belief.

NEW MEXICO
Date Surveyed No. 3572
March 29, 1972
Registered Professional Engineer
and/or Land Surveyor
John H. Seerey, Jr.

Certificate No.
3572

RECEIVED

APR 2 1972

OIL CONSERVATION COMM.
HOBBS, N. M.