

NO. OF COPIES RECEIVED	
DISTRIBUTION	
SANTA FE	
FILE	
U.S.G.S.	
LAND OFFICE	
OPERATOR	

# NEW MEXICO OIL CONSERVATION COMMISSION

Form C-101  
Revised 1-1-65 *30-125-24211*

5A. Indicate Type of Lease	
STATE <input type="checkbox"/>	FEE <input checked="" type="checkbox"/>
5. State Oil & Gas Lease No.	

## APPLICATION FOR PERMIT TO DRILL, DEEPEN, OR PLUG BACK

1a. Type of Work		7. Unit Agreement Name	
b. Type of Well OIL WELL <input checked="" type="checkbox"/> GAS WELL <input type="checkbox"/> OTHER <input type="checkbox"/> DRILL <input checked="" type="checkbox"/> DEEPEN <input type="checkbox"/> PLUG BACK <input type="checkbox"/> SINGLE ZONE <input checked="" type="checkbox"/> MULTIPLE ZONE <input type="checkbox"/>		8. Farm or Lease Name <b>Nicholson</b>	
2. Name of Operator <b>Texas International Petroleum Corporation</b>		9. Well No. <b>1</b>	
3. Address of Operator <b>1720 Wilco Building, Midland, Texas 79701</b>		10. Field and Pool or Wildcat <b>Humble City (Strawn)</b>	
4. Location of Well UNIT LETTER <b>J</b> LOCATED <b>1879</b> FEET FROM THE <b>South</b> LINE AND <b>1980</b> FEET FROM THE <b>East</b> LINE OF SEC. <b>10</b> TWP. <b>17-S</b> RGE. <b>37-F</b> NMPM		12. County <b>Lea</b>	
19. Proposed Depth <b>11,700'</b>		19A. Formation <b>Strawn</b>	
20. Rotary or C.T. <b>Rotary</b>		21. Elevations (Show whether DF, RT, etc.) <b>3751 Gr.</b>	
21A. Kind & Status Plug. Bond <b>Blanket - Current</b>		21B. Drilling Contractor <b>MGE Drilg. Co.</b>	
22. Approx. Date Work will start <b>August 12, 1972</b>			

## PROPOSED CASING AND CEMENT PROGRAM

SIZE OF HOLE	SIZE OF CASING	WEIGHT PER FOOT	SETTING DEPTH	SACKS OF CEMENT	EST. TOP
15	11 3/4"	42	400'	200	Surf.
11	8 5/8"	24 & 32	4800'	300	3800'
7 7/8	5 1/2"	15.5, 17, 20	11,700'	300	10,000

1. Drill 15" hole to approximately 400', set 11 3/4" casing at that depth and cement to surface.
2. Drill 11" hole to approximately 4800', set 8 5/8" casing at that depth and cement with approximately 300 sacks to bring cement top to 3800'.
3. Drill 7 7/8" hole to TD of approximately 11,700'. Test potential productive zones. Run 5 1/2" production casing.

Double, hydraulic blowout preventers will be used while drilling the well.

APPROVAL VALID  
FOR 90 DAYS UNLESS  
DRILLING COMMENCED,

EXPIRES 11/3/72

IN ABOVE SPACE DESCRIBE PROPOSED PROGRAM; IF PROPOSAL IS TO DEEPEN OR PLUG BACK, GIVE DATA ON PRESENT PRODUCTIVE ZONE AND PROPOSED NEW PRODUCTIVE ZONE. GIVE BLOWOUT PREVENTER PROGRAM, IF ANY.

I hereby certify that the information above is true and complete to the best of my knowledge and belief.

Signed *Dr. Helm* Title Division Engineer Date August 7, 1972

(This space for State Use)

APPROVED BY *Leslie J. Clements* TITLE OIL & GAS INSPECTOR DATE AUG 7 1972

CONDITIONS OF APPROVAL, IF ANY:

RECEIVED

AUG 7 1972

OIL CONSERVATION COMM.  
HOBBS, N. M.

**NEW MEXICO OIL CONSERVATION COMMISSION  
WELL LOCATION AND ACREAGE DEDICATION PLAT**

Form C-102  
Supersedes C-128  
Effective 1-1-65

All distances must be from the outer boundaries of the Section.

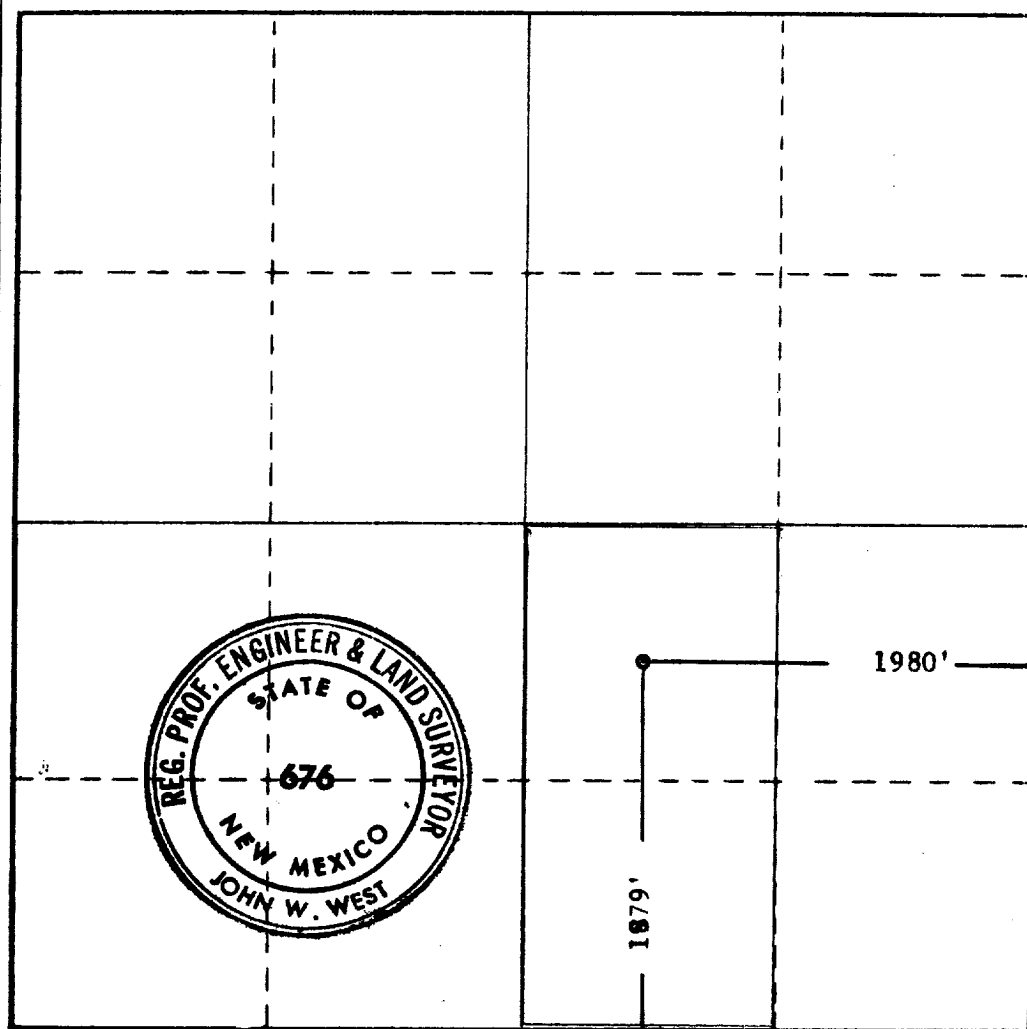
Operator <b>TEXAS INTERNATIONAL PETROLEUM CORP.</b>			Lease <b>NICHOLSON</b>		Well No. <b>1</b>
Unit Letter <b>J</b>	Section <b>10</b>	Township <b>17 SOUTH</b>	Range <b>37 EAST</b>	County <b>LEA</b>	
Actual Footage Location of Well: <div style="display: flex; justify-content: space-between;"> <span>1980 feet from the <b>EAST</b> line and</span> <span>1879 feet from the <b>SOUTH</b> line</span> </div>					
Ground Level Elev. <b>3751.0</b>	Producing Formation <b>Strawn</b>	Pool <b>Humble City (Strawn)</b>		Dedicated Acreage: <b>80</b> Acres	

1. Outline the acreage dedicated to the subject well by colored pencil or hachure marks on the plat below.
2. If more than one lease is dedicated to the well, outline each and identify the ownership thereof (both as to working interest and royalty).
3. If more than one lease of different ownership is dedicated to the well, have the interests of all owners been consolidated by communitization, unitization, force-pooling, etc?

☐ Yes    ☐ No    If answer is "yes," type of consolidation \_\_\_\_\_

If answer is "no," list the owners and tract descriptions which have actually been consolidated. (Use reverse side of this form if necessary.) \_\_\_\_\_

No allowable will be assigned to the well until all interests have been consolidated (by communitization, unitization, forced-pooling, or otherwise) or until a non-standard unit, eliminating such interests, has been approved by the Commission.



**CERTIFICATION**

I hereby certify that the information contained herein is true and complete to the best of my knowledge and belief.

*D. C. Helm*

Name  
**D. C. Helm**

Position  
**Division Engineer**

Company  
**Texas International Petroleum Corporation**

Date  
**August 7, 1972**

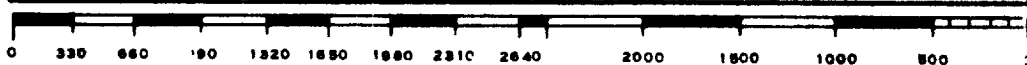
I hereby certify that the well location shown on this plat was plotted from field notes of actual surveys made by me or under my supervision, and that the same is true and correct to the best of my knowledge and belief.

Date Surveyed  
**8-1-1972**

Registered Professional Engineer and/or Land Surveyor

*John W. West*

Certificate No. **676**



**RECEIVED**

AUG 7 1972

OIL CONSERVATION COMM.  
HOBBS, N. M.