

UNITED STATES
DEPARTMENT OF THE INTERIOR
GEOLOGICAL SURVEY

APPLICATION FOR PERMIT TO DRILL, DEEPEN, OR PLUG BACK

1a. TYPE OF WORK DRILL <input checked="" type="checkbox"/> DEEPEN <input type="checkbox"/> PLUG BACK <input type="checkbox"/>			5. LEASE DESIGNATION AND SERIAL NO. NM-0481695		
b. TYPE OF WELL OIL WELL <input checked="" type="checkbox"/> GAS WELL <input type="checkbox"/> OTHER <input type="checkbox"/> SINGLE ZONE <input checked="" type="checkbox"/> MULTIPLE ZONE <input type="checkbox"/>			6. IF INDIAN, ALLOTTEE OR TRIBE NAME		
2. NAME OF OPERATOR Gulf Oil Corporation			7. UNIT AGREEMENT NAME		
3. ADDRESS OF OPERATOR Box 670, Hobbs, New Mexico 88240			8. FARM OR LEASE NAME Walton Federal		
4. LOCATION OF WELL (Report location clearly and in accordance with any State requirements.)* At surface 1980' FSL & 330' FWL, Section 17, 19-S, 33-E At proposed prod. zone			9. WELL NO. 1		
14. DISTANCE IN MILES AND DIRECTION FROM NEAREST TOWN OR POST OFFICE*			10. FIELD AND POOL, OR WILDCAT Undesignated		
10. DISTANCE FROM PROPOSED* LOCATION TO NEAREST PROPERTY OR LEASE LINE, FT. (Also to nearest drig. unit line, if any)			11. SEC., T., R., M., OR BLK. AND SURVEY OR AREA Sec 17, 19-S, 33-E		
18. DISTANCE FROM PROPOSED* LOCATION TO NEAREST WELL, DRILLING, COMPLETED, OR APPLIED FOR, ON THIS LEASE, FT.			12. COUNTY OR PARISH Lea		
21. ELEVATIONS (Show whether DF, RT, GR, etc.)			13. STATE New Mexico		
16. NO. OF ACRES IN LEASE 840			17. NO. OF ACRES ASSIGNED TO THIS WELL 40		
19. PROPOSED DEPTH 3700'			20. ROTARY OR CABLE TOOLS Cable tools & Rotary		
22. APPROX. DATE WORK WILL START*			December 15, 1973		

23. PROPOSED CASING AND CEMENTING PROGRAM

SIZE OF HOLE	SIZE OF CASING	WEIGHT PER FOOT	SETTING DEPTH	QUANTITY OF CEMENT
11"	8-5/8"	24# K-55	250'	Circulate
7-7/8"	5-1/2"	14# K-55	3700'	300 sacks

0 to 300' Spud mud.
300' to 3600' 10.0# brine water with mud as required.
3600' to 3700' 10.0# salt water gel, Visc 34 - 40, WL 25cc or less
BOP: See attached drawing.

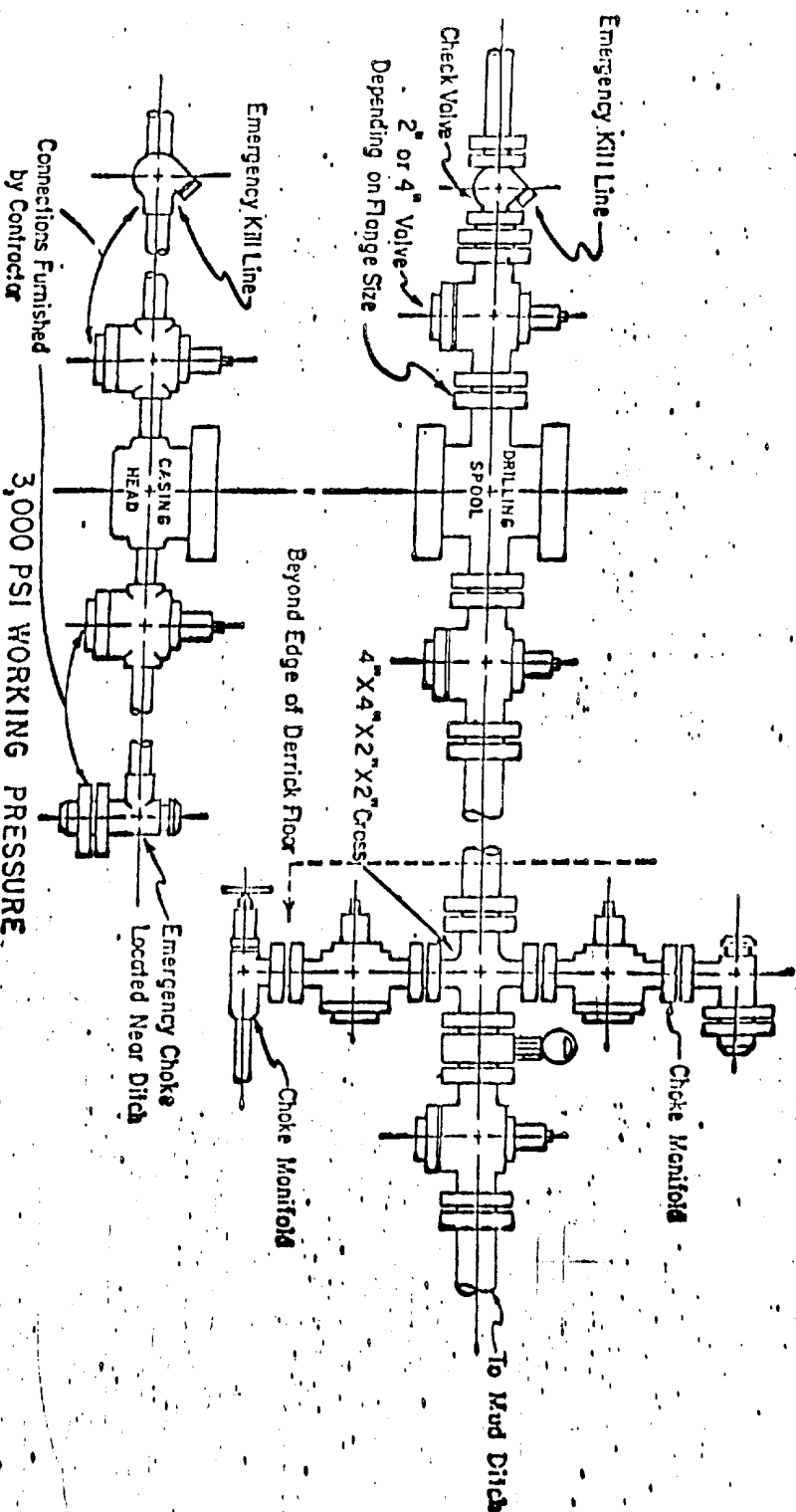
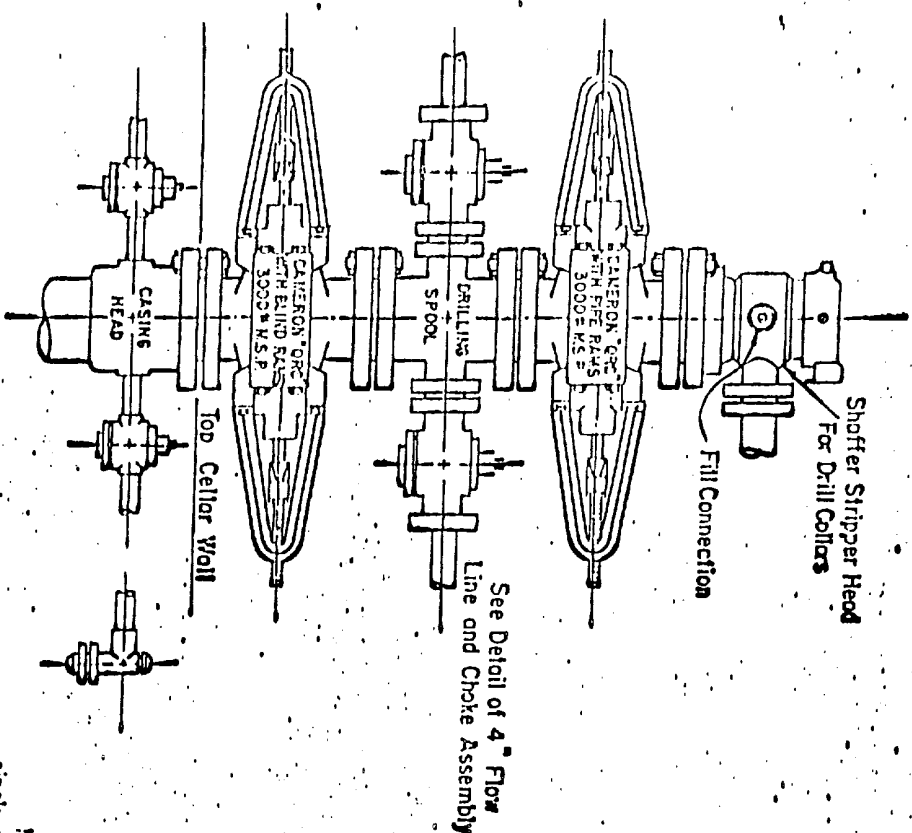
AMENDMENT:

All litter and scrap material will be disposed of by removing to an operating sanitary land fill or by burying in a trash pit with a minimum cover of 24 inches of dirt.

IN ABOVE SPACE DESCRIBE PROPOSED PROGRAM: If proposal is to deepen or plug back, give data on present productive zone and proposed new productive zone. If proposal is to drill or deepen directionally, give pertinent data on subsurface locations and measured and true vertical depths. Give blowout preventer program, if any.

24. SIGNED <u>H. J. Brezeale</u>		TITLE <u>Area Engineer</u>		DATE <u>November 29, 1973</u>	
(This space for Federal or State office use)					
PERMIT NO. _____		APPROVAL DATE <u>DEC 1 1973</u>		DATE _____	
APPROVED BY _____		TITLE _____		DATE _____	
CONDITIONS OF APPROVAL, IF ANY:					

*See Instructions On Reverse Side



3,000 PSI WORKING PRESSURE
KILL, CHOKe, AND FILL CONNECTIONS
API Series 900 Flanges or Better
DETAIL OF 4" FLOW LINE CHOKe ASSEMBLY

3,000 PSI WORKING PRESSURE BLOWOUT PREVENTER HOOK-UP

Series 900 Flanges, or Better

Minimum assembly for 3000 PSI working pressure will consist of two preventers which may be Cameron QRC, Cameron Type F, single or double, Cameron Space-Saver or Shafter Hydraulic, single or double. If double preventers are provided, the drilling spool shall be placed below the preventers and the blind Rams placed in the upper preventer. With this arrangement it will not be necessary to provide a kill and choke line to Gulf's casinghead housing. In lieu of the drilling spool, the flanged outlets of the double Shafter, the Space-Saver or double F, if they are the correct size, and provided the preventers can be installed to meet Gulf's requirements, may be used for the four-inch flow line and the two-inch kill line.

Size 12-inch preventers may be used for work down through 8-5/8-inch casing. Size 10-inch preventers may be used for work down through 7-5/8-inch casing. Size six-inch preventers are to be used for work through 7-inch and 5-1/2-inch casings.

Minimum operating equipment for the preventers will be: (1) An air operated pump and (2) An accumulator (s) with some means of obtaining a fluid charge. A closed fluid system is recommended. The closing manifold and remote closing manifold will have a separate four-way valve for each pressure operated device. Sufficient fluid capacity in the accumulator (s) shall be available to close all the pressure operated devices at the same time with 25 per cent reserve. Gulf No. 551 hydraulic oil shall be used as the operating fluid.

The four-inch flow line from the preventers shall be supported by a metal stand or reinforced concrete. All valves throughout the assembly shall be selected for operation in both gas and fluids. Sufficient substructure height is to be provided in the event Gulf should request installation of a rotating type blowout preventer. The preventers will be provided with stem extensions, universal joints, if needed, and operating wheels.

NEW MEXICO OIL CONSERVATION COMMISSION
WELL LOCATION AND ACREAGE DEDICATION PLAT

Form C-102
Supersedes C-12A
Effective 1-1-65

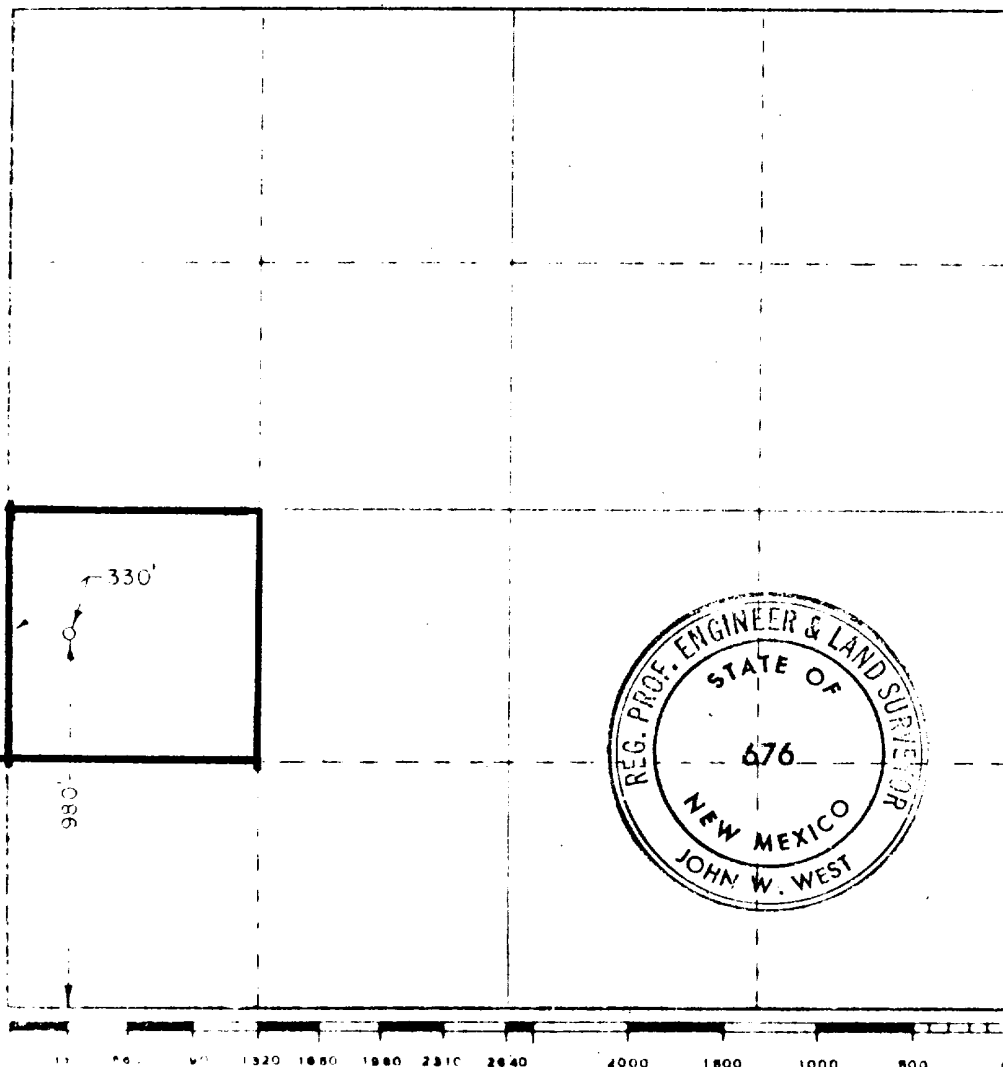
All distances must be from the outer boundaries of the Section

GULF OIL CORPORATION		Lease		WALTON FEDERAL		Well No.	
17		19 South		33 East		Lea	
1980		feet from the South		line in		330	
feet from the North		feet from the West		line			
7-Rivers		Wildcat		Dedicated Acreage		40	

- Outline the acreage dedicated to the subject well by colored pencil or hatchure marks on the plat below.
- If more than one lease is dedicated to the well, outline each and identify the ownership thereof (both as to working interest and royalty)
- If more than one lease of different ownership is dedicated to the well, have the interests of all owners been consolidated by communitization, unitization, force-pooling, etc?
☐ Yes ☐ No If answer is "yes," type of consolidation _____

If answer is "no," list the owners and tract descriptions which have actually been consolidated (Use reverse side of this form if necessary) _____

No allowable will be assigned to the well until all interests have been consolidated (by communitization, unitization, force-pooling, or otherwise) or until a non-standard unit, eliminating such interests, has been approved by the Commission.



CERTIFICATION

I hereby certify that the information contained herein is true and complete to the best of my knowledge and belief

K. J. Breazeale

K. J. BREAZEALE

Area Engineer

Gulf Oil Corporation

November 29, 1973

I hereby certify that the well location shown on this plat was plotted from field notes of actual surveys made by me or under my supervision, and that the same is true and correct to the best of my knowledge and belief.

Date Surveyed

November 27, 1973

Registered Professional Engineer and Land Surveyor

John W. West

Plate No.

676