

NO. OF COPIES RECEIVED	
DISTRIBUTION	
SANTA FE	
FILE	
U.S.G.S.	
LAND OFFICE	
OPERATOR	

# NEW MEXICO OIL CONSERVATION COMMISSION

Form C-101  
Revised 1-1-65 3-12-74

5A. Indicate Type of Lease  
STATE ☒ FEE ☐  
5. State Oil & Gas Lease No.  
**B-1520**

**APPLICATION FOR PERMIT TO DRILL, DEEPEN, OR PLUG BACK**

1a. Type of Work  
b. Type of Well  
OIL WELL ☒ GAS WELL ☐ OTHER ☐  
DRILL ☒ DEEPEN ☐ PLUG BACK ☐  
SINGLE ZONE ☒ MULTIPLE ZONE ☐

2. Name of Operator  
**Mobil Oil Corporation**

3. Address of Operator  
**P. O. Box 633, Midland, Texas 79701**

4. Location of Well  
UNIT LETTER **P** LOCATED **330** FEET FROM THE **South** LINE  
AND **330** FEET FROM THE **East** LINE OF SEC. **26** TWP. **17-S** RGE. **34-E** NMPM.

7. Unit Agreement Name  
8. Farm or Lease Name  
**Bridges-State**

9. Well No.  
**180**

10. Field and Pool, or Wildcat  
**Vacuum**

12. County  
**Lea**

19. Proposed Depth  
**4750'**

19A. Formation  
**Grayburg-San Andres**

20. Rotary or C.T.  
**Rotary**

21. Elevations (Show whether DE, RT, etc.)  
**4003' - Ground**

21A. Kind & Status Plug. Bond  
**On File**

21B. Drilling Contractor  
**-**

22. Approx. Date Work will start  
**12-31-73**

## PROPOSED CASING AND CEMENT PROGRAM

SIZE OF HOLE	SIZE OF CASING	WEIGHT PER FOOT	SETTING DEPTH	SACKS OF CEMENT	EST. TOP
12-1/4"	8-5/8"	20# - Misco	350'	Circulate	Surface
7-7/8"	5-1/2"	14# - J-55	4750'	Circulate	Surface

## BLOWOUT PREVENTER PROGRAM:

Casing String	Equip. Size x API Series	No. & Type	Test Pressure PSI
Surface	8" or 10" 600	1-Pipe & 1-Blank	1000

APPROVAL VALID  
FOR 90 DAYS FROM  
ISSUING DATE  
EXPIRES 3-26-74

IN ABOVE SPACE DESCRIBE PROPOSED PROGRAM: IF PROPOSAL IS TO DEEPEN OR PLUG BACK, GIVE DATA ON PRESENT PRODUCTIVE ZONE AND PROPOSED NEW PRODUCTIVE ZONE. GIVE BLOWOUT PREVENTER PROGRAM, IF ANY.

I hereby certify that the information above is true and complete to the best of my knowledge and belief.

Signed A. D. Bond A. D. Bond Title Proration Staff Assistant Date December 20, 1973

(This space for State Use)  
APPROVED BY [Signature] TITLE \_\_\_\_\_ DATE \_\_\_\_\_  
REASONS OF APPROVAL, IF ANY:

NEW! CO OIL CONSERVATION COMMISSION  
WELL LOCATION AND ACREAGE DEDICATION PLAT

Form C-102  
Supersedes C-128  
Effective 1-1-65

All distances must be from the outer boundaries of the Section.

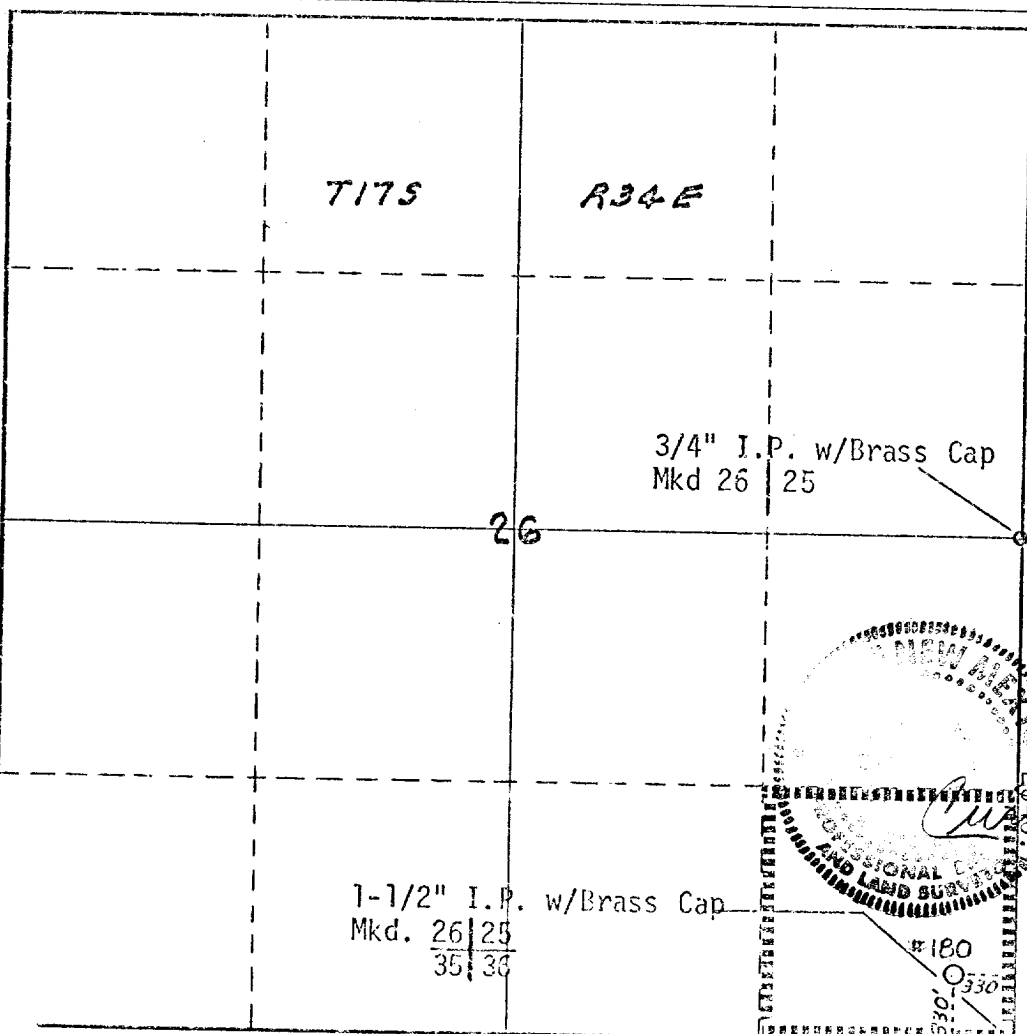
Operator <b>Mobil Oil Corporation</b>			Lease <b>Bridges-State</b>		Well No. <b>180</b>
Unit Letter <b>P</b>	Section <b>26</b>	Township <b>17-S</b>	Range <b>34-E</b>	County <b>Lea</b>	
Actual Footage Location of Well:					
<b>330</b> feet from the <b>South</b> line and		<b>330</b> feet from the <b>East</b> line			
Ground Level Elev. <b>4003'</b>	Producing Formation <b>Grayburg-San Andres</b>		Pool <b>Vacuum</b>	Dedicated Acreage: <b>40</b> Acres	

1. Outline the acreage dedicated to the subject well by colored pencil or hatchure marks on the plat below.
2. If more than one lease is dedicated to the well, outline each and identify the ownership thereof (both as to working interest and royalty).
3. If more than one lease of different ownership is dedicated to the well, have the interests of all owners been consolidated by communitization, unitization, force-pooling, etc?

☐ Yes ☐ No If answer is "yes," type of consolidation \_\_\_\_\_

If answer is "no," list the owners and tract descriptions which have actually been consolidated. (Use reverse side of this form if necessary.) \_\_\_\_\_

No allowable will be assigned to the well until all interests have been consolidated (by communitization, unitization, forced-pooling, or otherwise) or until a non-standard unit, eliminating such interests, has been approved by the Commission.



CERTIFICATION

I hereby certify that the information contained herein is true and complete to the best of my knowledge and belief.

*A. D. Bond*

Name

**A. D. Bond**

Position

**Proration Staff Assistant**

Company

**Mobil Oil Corporation**

Date

**December 20, 1973**

I hereby certify that the well location shown on this plat was plotted from field notes of actual surveys made by me or under my supervision, and that the same is true and correct to the best of my knowledge and belief.

*Curtis A. Callaway*

Date Surveyed

**December 13, 1973**

Registered Professional Engineer and/or Land Surveyor

**Curtis A. Callaway**

Certificate No.

**3342**

