

TITLE _____ DATE _____

**PLUG AND ABANDON WELL PROCEDURE
SANTA FE #127**

NOTE: Cement used is Class "C", density of 14.8 ppg, yield of 1.32 cubic feet per sack.

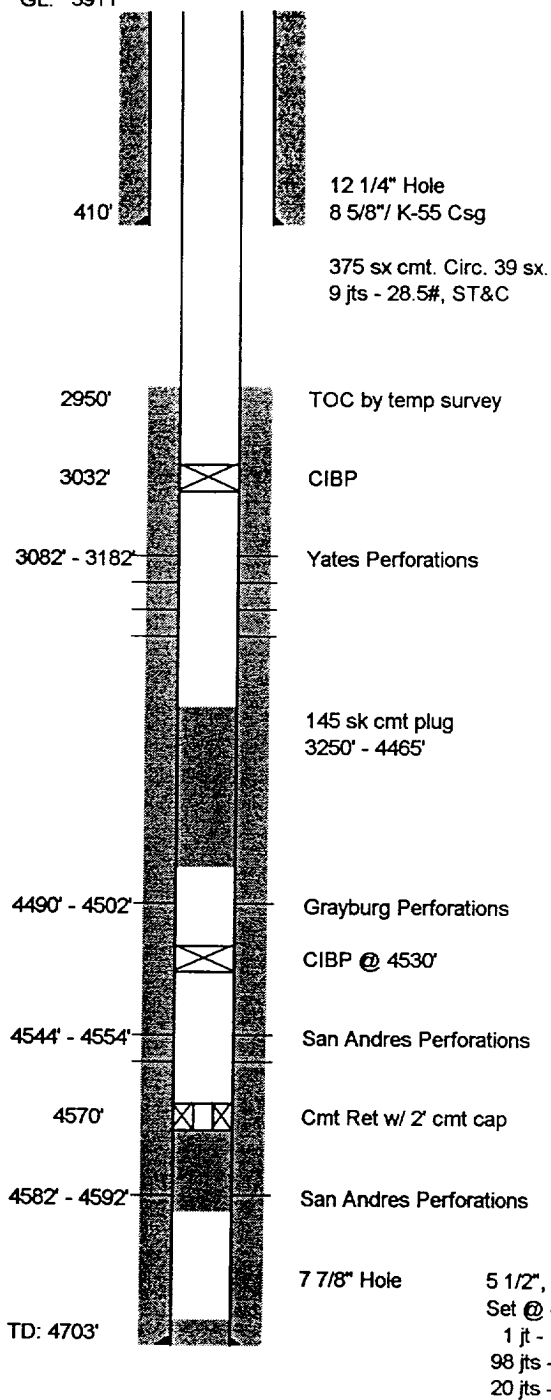
1. Notify NMOCD at (505) 393-6161, 24 hours prior to initiating plugging operations.
2. MIRU Plug & Abandon Package.
3. ND wellhead. NU PPCo. Class 1 shop tested BOP stack.
4. GIH w/ 2-3/8" WS open-ended and tag CIBP @ 3032'. Circulate 5-1/2" casing with 60 bbls 9.5 ppg mud-laden fluid.
5. Spot Plug No. 1, 15 sx. 3032 – 2888'. Plug will cover the CIBP & Yates.
6. POOH.
7. RU wireline unit. RIH & perforate 5 1/2" csg at 2888'. POOH w/ WL.
8. TIH w/ AD-1Pkr & set at 2600'. Sqz. Plug No. 2, 35 sx., from 2888 – 2750'. Plug will cover the Salt Base. (WOC if pressure attained).
9. POOH w/ WS to 1500', set pkr. RIH & perforate 5 1/2" csg. at 1775'. POOH w/ WL.
10. Sqz. Plug No. 3, 25 sx from 1775 – 1675' (minimum interval). Plug will cover the Salt Top. (WOC if pressure attained).
11. Release packer & POOH to 360'. Set pkr.
12. RIH & perforate 5 1/2" csg. at 460'. POOH w/ WL.
13. Establish Circ on 5 1/2 x 8 5/8" annulus. POOH w/ pkr. TIH w/ CICR & set at 360'.
14. Sqz. Plug #4 65 sx. 460' to surface. Unsting from CICR. Spot 45 sx 360' to surface. The plug will cover the surface csg. shoe & surface plug.
15. POOH. Top off. WOC. Tag cement and top off if necessary.
14. Cut off casing and wellhead 3' below GL and cap well. Install dry hole marker. Perform reclamation work.
15. Send forms and reports to: Phillips Regulatory
4001 Penbrook
Odessa, Texas 79762

hillips Petroleum Company - Southwest Region
October 16, 2001

RKB: 3921'
DF: 3920'
GL: 3911'

Lease & Well No.: Santa Fe #127

Well Category: One Status: TA'd
Area: New Mexico
Subarea: Buckeye Field: Vacuum Yates
API Number: 30-025-24643
Legal Description: 1650' FNL & 2310' FEL, Sec 34, T-17-S, R-35-E
Lea County, New Mexico
Spudded: 01/20/1974
Completed: 05/23/1974



Well History:
9/01 Set CIBP at 3032'. Isolated casing leak from 7-28'.

Formation Tops:	Salt Top	1725'
	Salt Base	2890'
	Yates	2901'
	Seven Rivers	3235'
	Queen	3798'
	Grayburg	4160'
	San Andres	4544'

File name: o:\everyone\wellfile\buckeye\santafe\sketch\Santa Fe #127.xls

Phillips Petroleum Company - Southwest Region
October 16, 2001

RKB: 3921'
 DF: 3920'
 GL: 3911'
 Surface

Lease & Well No.: **Santa Fe #127**

Production Hole: 12-1/4"

Well Category: One Status: TA'd
 Area: New Mexico
 Subarea: Buckeye Field: Vacuum Yates
 API Number: 30-025-24643
 Legal Description: 1650' FNL & 2310' FEL, Sec 34, T-17-S, R-35-E
 Lea County, New Mexico
 Spudded: 01/20/1974
 Completed: 05/23/1974

Production Csg: 8 5/8" 28.5# K55,
 Cmt'd w/ 375 sx, circ 39 sx.

CICR 360'
 410'
 460'

Plug #4

Plug #4 Sqz. 65 sx 460 - 0'
 Spot 40 Sx 360 - 0'. Covers the shoe plug
 & surface plug.

1665'

Plug #3

Plug #3 Sqz. 25 sx (1775 - 1675' Min Sx & Min. Int.) Calc'd
 Int. 1775 - 1665' covers Salt Top

2736'

Plug #2

Plug #2 Sqz. 35 sx (2888 - 2750' min. int.) Calc'd Int. 2838 - 2736' covers Salt Base

2888'

Plug #1

Plug #1 Spot 15 sx 3032 - 2888' covers CIBP/Yates
 TOC by temp survey

2950'

3032'

CIBP

3082' - 3182'

Yates Perforations

145 sk cmt plug
 3250' - 4465'

4490' - 4502'

Grayburg Perforations

CIBP @ 4530'

4544' - 4554'

San Andres Perforations

4570'

Cmt Ret w/ 2' cmt cap

4582' - 4592'

San Andres Perforations

TD: 4703'

7 7/8" Hole 5 1/2", K-55 Casing
 Set @ 4703', 300 sx cmt.
 1 jt - 15.5#, ST&C
 98 jts - 14#, ST&C
 20 jts - 15.5#, ST&C

Well History:

9/01 Set CIBP at 3032'. Isolated casing leak from 7-28'.

Formation Tops:

Salt Top	1725'
Salt Base	2800'
Yates	2901'
Seven Rivers	3235'
Queen	3798'
Grayburg	4160'
San Andres	4544'

File name: o:\everyone\wellfile\buckeye\santafe\sketch\Santa Fe #127.xls