

NEW MEXICO OIL CONSERVATION COMMISSION
WELL LOCATION AND ACREAGE DEDICATION PLAT

Form C-102
Supersedes C-128
Effective 1-1-65

All distances must be from the outer boundaries of the Section.

Operator Mobil Oil Corporation		Lease State UU Com		Well No. 1
Unit letter F	Section 7	Township 17-S	Range 35-E	County Lea
Actual Footage Location of Well:				
1980'		feet from the North	line and 1907	feet from the West
Ground Level Elev. 4009.5	Producing Formation Morrow	Pool Undesignated	Dedicated Acreage: *310.24 Acres	

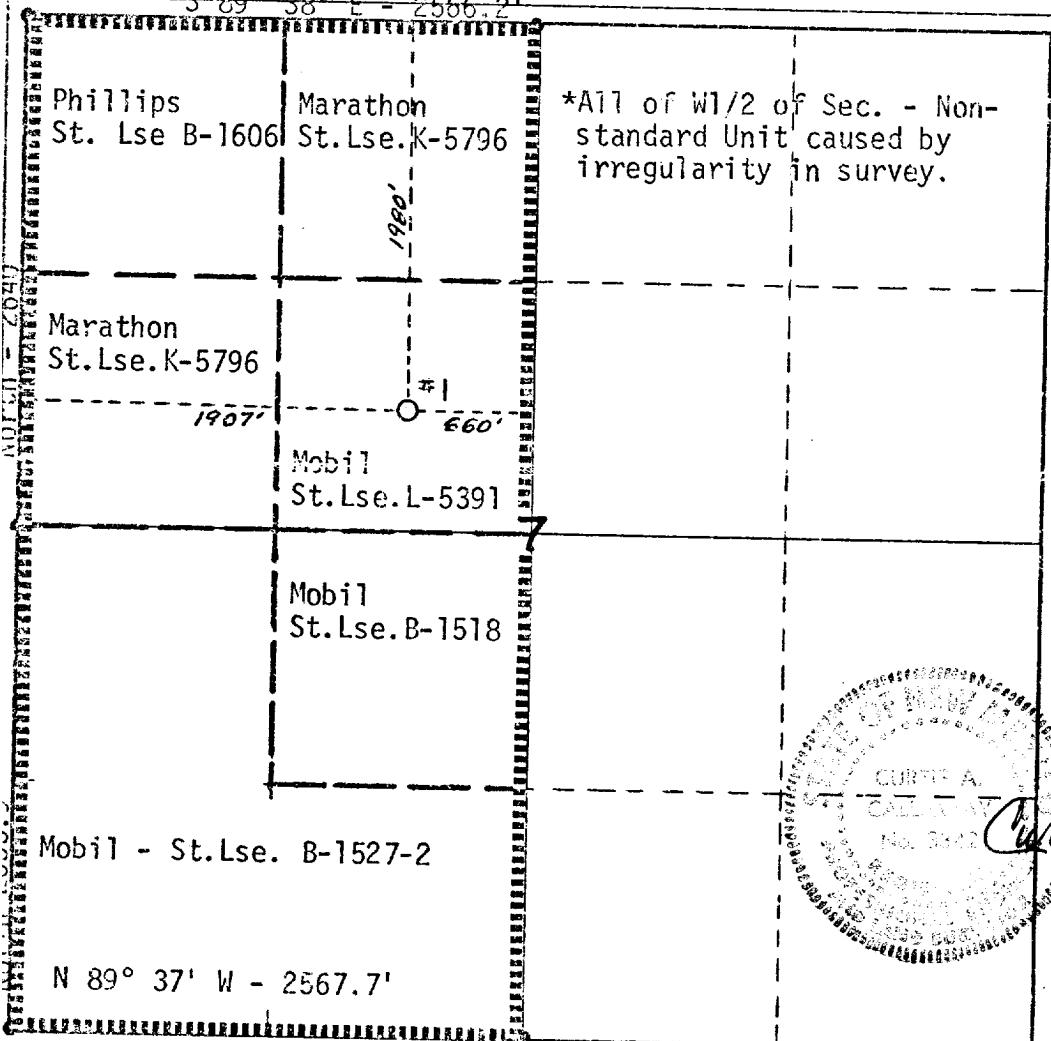
1. Outline the acreage dedicated to the subject well by colored pencil or hachure marks on the plat below.
2. If more than one lease is dedicated to the well, outline each and identify the ownership thereof (both as to working interest and royalty).
3. If more than one lease of different ownership is dedicated to the well, have the interests of all owners been consolidated by communitization, unitization, force-pooling, etc?

☒ Yes ☐ No If answer is "yes," type of consolidation Communitization Pending

If answer is "no," list the owners and tract descriptions which have actually been consolidated. (Use reverse side of this form if necessary.)

No allowable will be assigned to the well until all interests have been consolidated (by communitization, unitization, forced-pooling, or otherwise) or until a non-standard unit, eliminating such interests, has been approved by the Commission.

S 89° 38' E - 2566.2'



CERTIFICATION

I hereby certify that the information contained herein is true and complete to the best of my knowledge and belief.

A. D. Bond

Name
A. D. Bond

Position
Proration Staff Assistant

Company
Mobil Oil Corporation

Date
January 31, 1974

I hereby certify that the well location shown on this plat was plotted from field notes of actual surveys made by me or under my supervision, and that the same is true and correct to the best of my knowledge and belief.

Curtis A. Callaway

Date Surveyed
1-28-74

Registered Professional Engineer and/or Land Surveyor

Curtis A. Callaway

Certificate No.
3342

173