

**NEW MEXICO OIL CONSERVATION COMMISSION
WELL LOCATION AND ACREAGE DEDICATION PLAN**

Form C-102
Supersedes C-128
Effective 1-1-65

All distances must be from the outer boundaries of the Section.

Operator Mobil Oil Corporation			Lease North Vacuum Abo Unit		Well No. 221
Unit Letter E	Section 19	Township 17S	Range 35E	County Lea	
Actual Postage Location of Well: 1850 feet from the North line and 660 feet from the West line					
Ground Level Elev. 3993' Gr.	Producing Formation Abo		Pool North Vacuum-Abo		Dedicated Acreage: *75.30 (2 wells) Acres

1. Outline the acreage dedicated to the subject well by colored pencil or hachure marks on the plat below.
2. If more than one lease is dedicated to the well, outline each and identify the ownership thereof (both as to working interest and royalty).
3. If more than one lease of different ownership is dedicated to the well, have the interests of all owners been consolidated by communitization, unitization, force-pooling, etc?

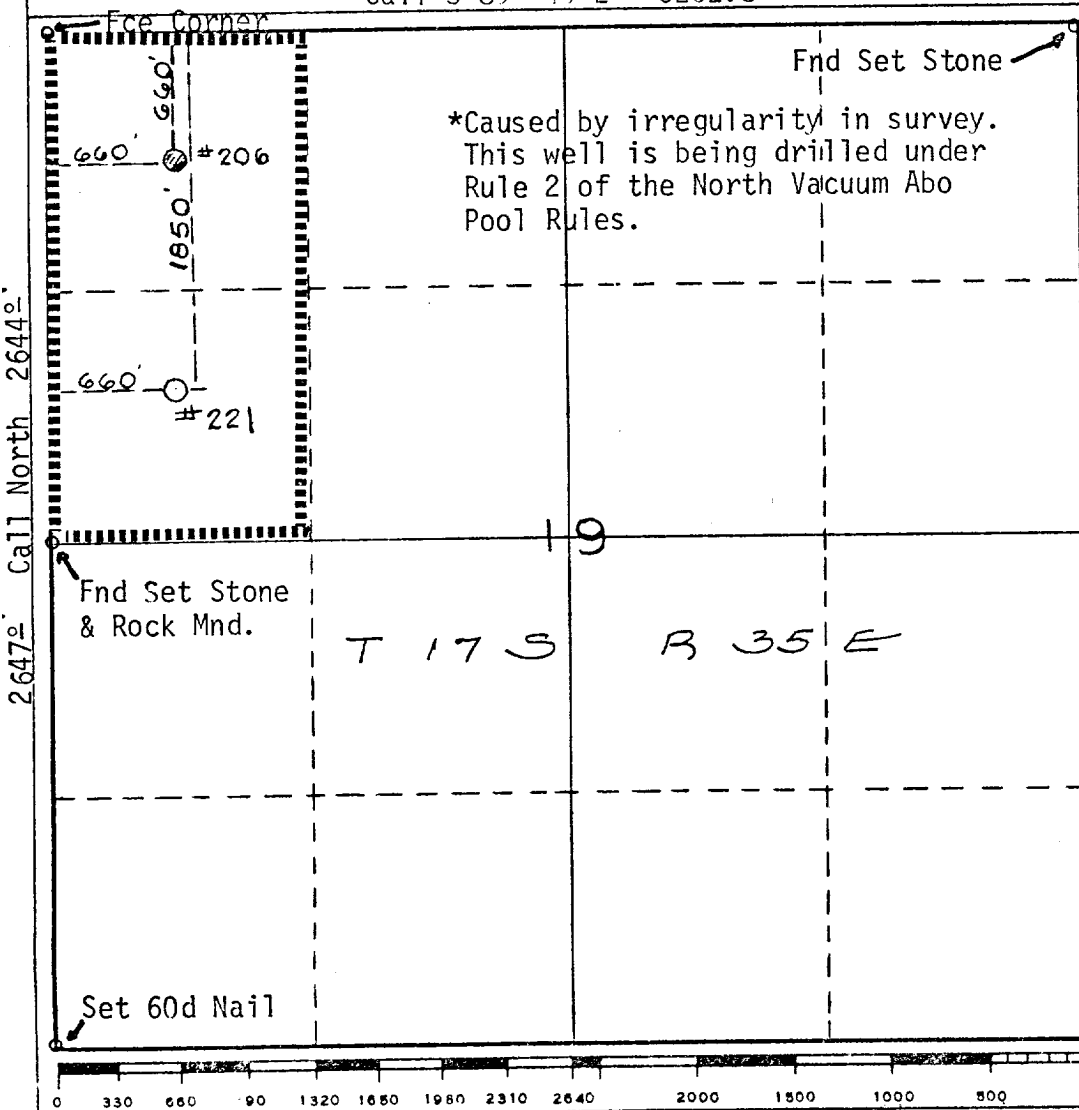
Unitization

☒ Yes ☐ No If answer is "yes," type of consolidation _____

If answer is "no," list the owners and tract descriptions which have actually been consolidated. (Use reverse side of this form if necessary.) _____

No allowable will be assigned to the well until all interests have been consolidated (by communitization, unitization, forced-pooling, or otherwise) or until a non-standard unit, eliminating such interests, has been approved by the Commission.

Call S 89° 40'E - 5202.8'



CERTIFICATION

I hereby certify that the information contained herein is true and complete to the best of my knowledge and belief.

Name John Seerey
Position Associate Operations Engr.
Company Mobil Oil Corporation

Date August 30, 1974

I hereby certify that the well location shown on this plan was plotted from field notes of actual surveys made by me or under my supervision, and that the same is true and correct to the best of my knowledge and belief.

August 28, 1974

Date Surveyed
Harvey A. Carson, Jr.
Registered Professional Engineer
and/or Land Surveyor

Harvey A. Carson, Jr.
Certificate No. **5063**

2647'± Call North 2644'±

113