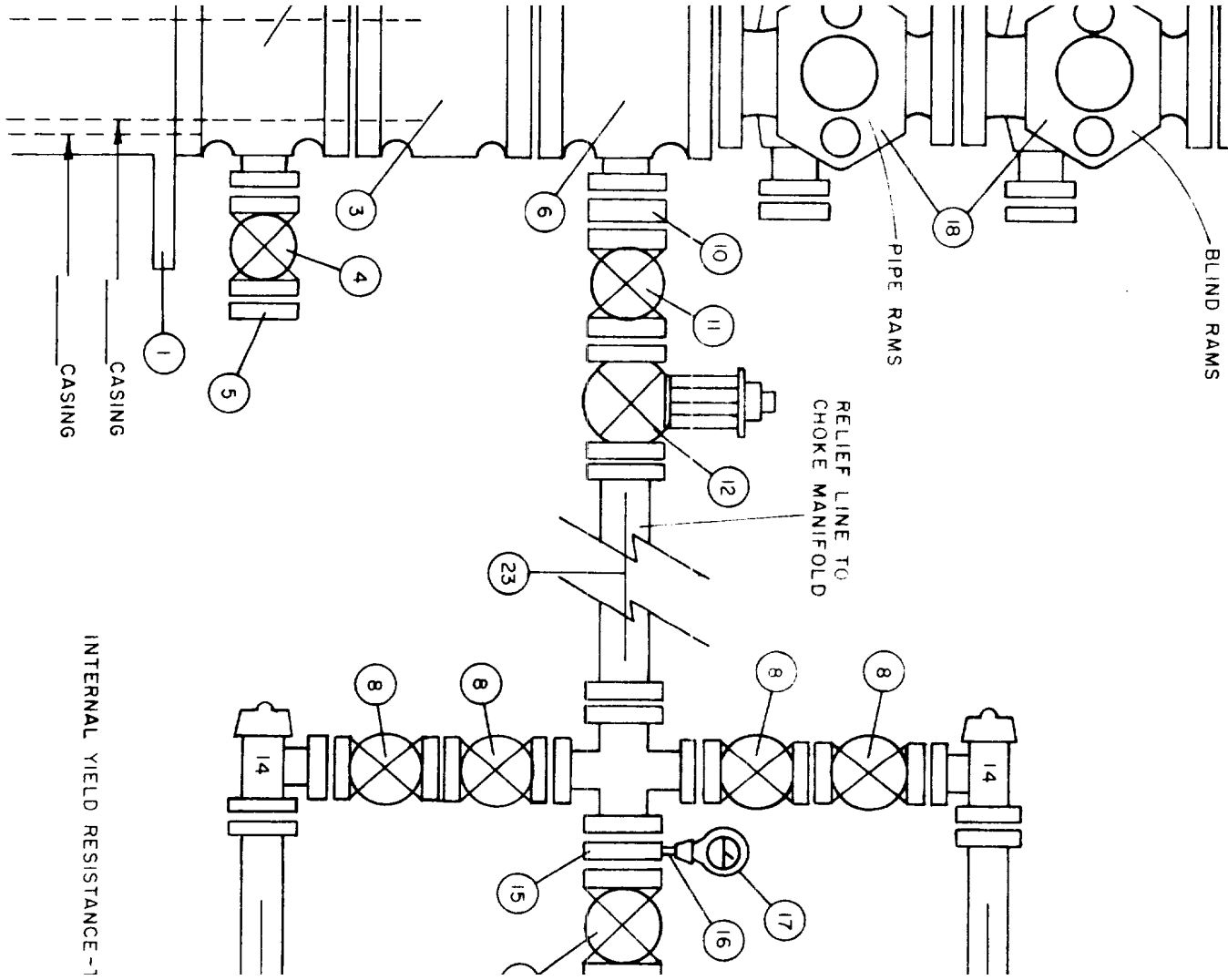
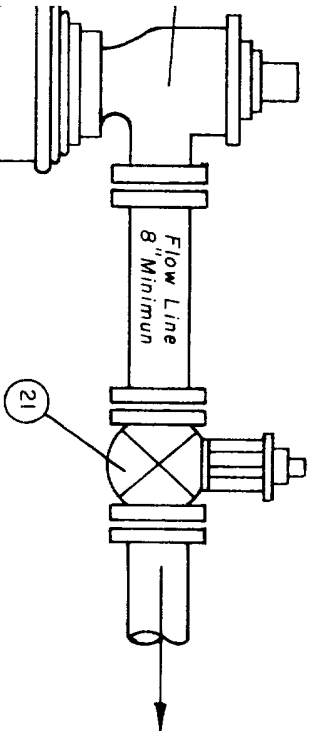
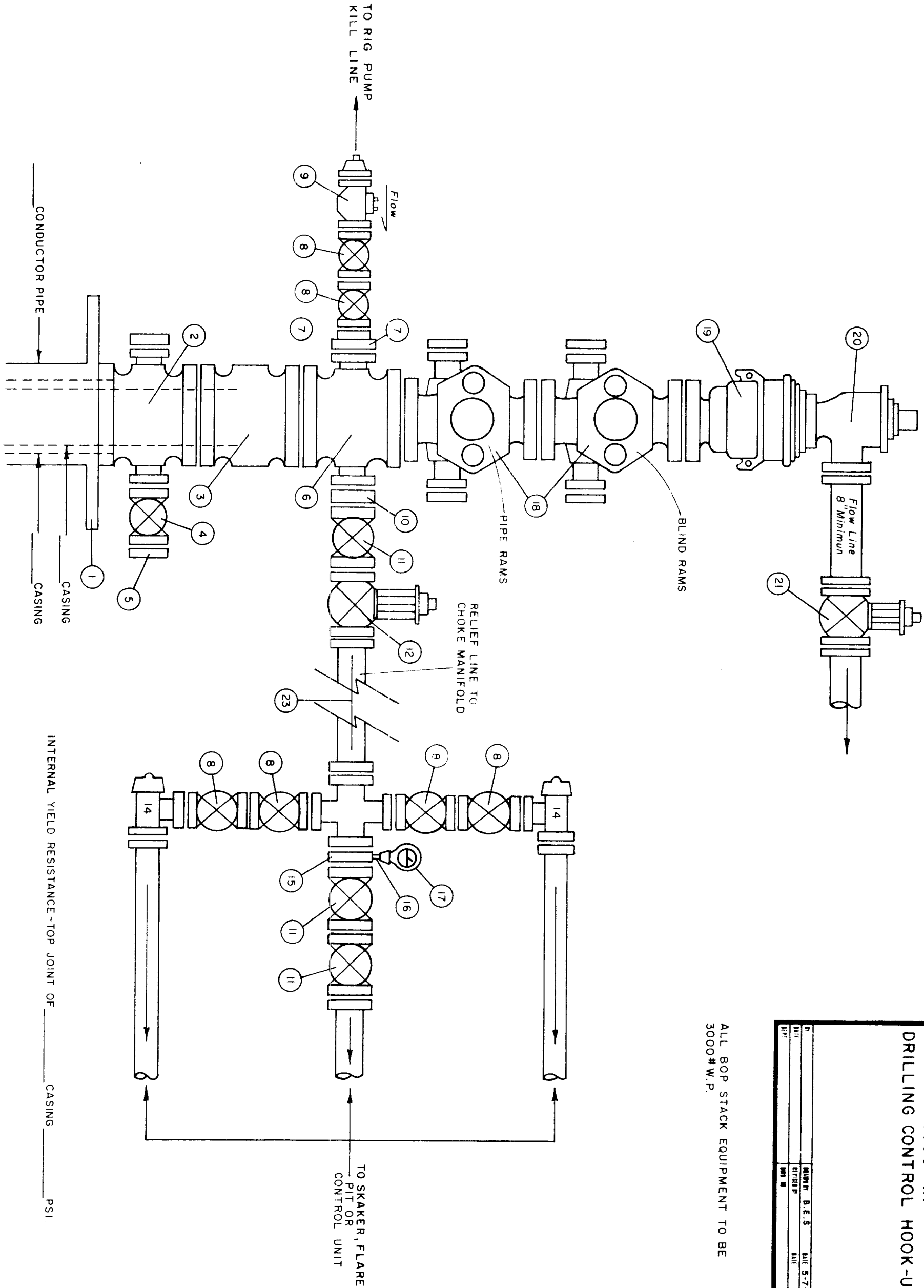


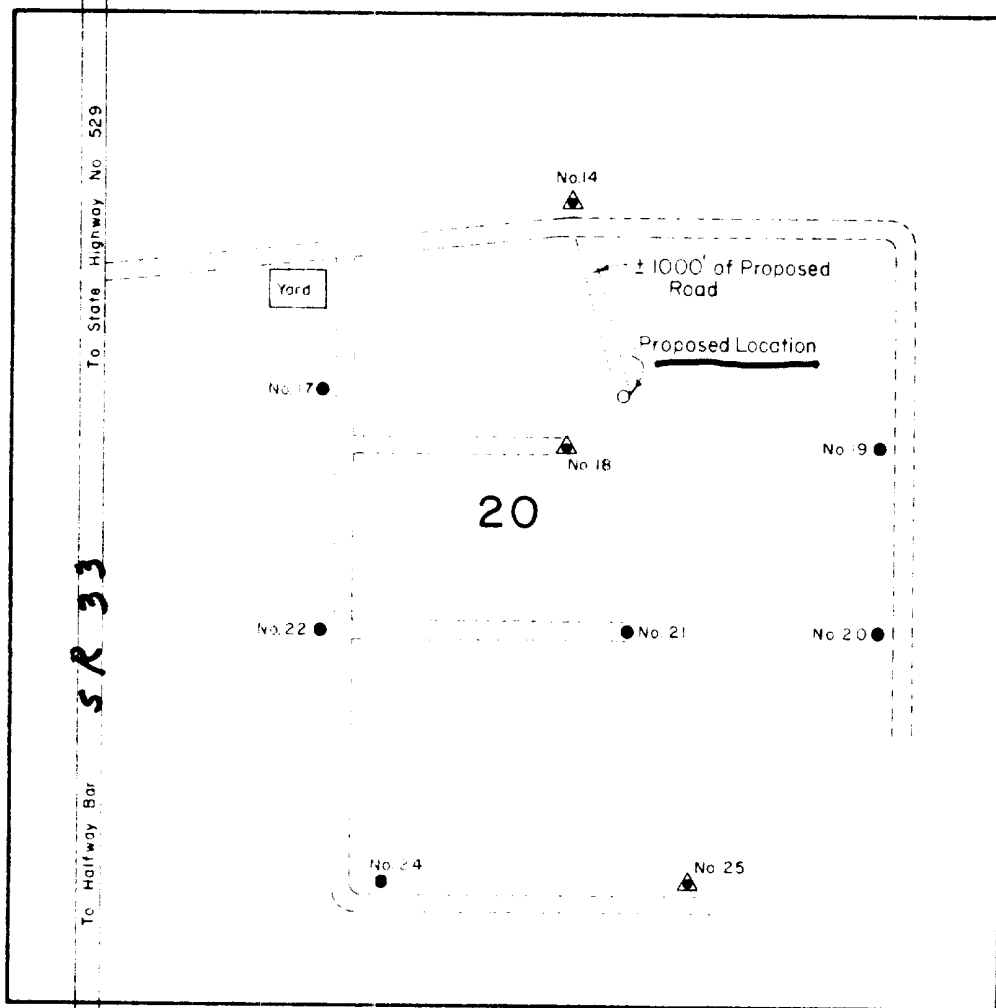


3000 # WP
DRILLING CONTROL HOOK-UP

DATE	REVIEW BY	DATE
11/11	B. E. S.	11/11
11/17	REVIEW BY	11/17
11/17	DATE	11/17

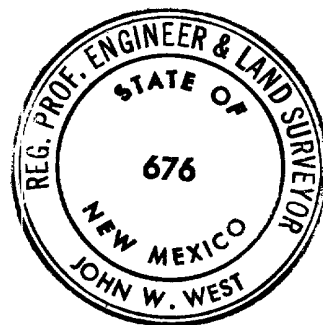
ALL BOP STACK EQUIPMENT TO BE
3000 # W.P.





T 18 S, R 32 E

- Location
- Producing Oil Well
- ▲ Injection Well



I HEREBY CERTIFY THAT THIS FLAT WAS MADE FROM NOTES TAKEN IN THE FIELD IN A BONA FIDE SURVEY MADE UNDER MY SUPERVISION, AND THAT THE SAME IS TRUE AND CORRECT TO THE BEST OF MY KNOWLEDGE AND BELIEF.

John W. West
 JOHN W. WEST, N.M. PE & L.S. NO 676
 TEXAS R.P.S. NO. 1138

Exhibit #2

ATLANTIC RICHFIELD COMPANY

Topo survey of Young Federal No. 1 located in Section 20, Township 18 South, Range 32 East, N.M.P.M., Lea County, New Mexico.

JOHN W. WEST ENGINEERING COMPANY

CONSULTING ENGINEERS

HOBBS, NEW MEXICO

Scale 1:1000

Drawn by Beverly

Date December 6, 1974

Sheet 1 of 1 Sheets