

District I
PO Box 1980, Hobbs, NM 88241-1980
District II
811 South First, Artesia, NM 88210
District III
1000 Rio Brazos Rd., Aztec, NM 87410
District IV
2040 South Pacheco, Santa Fe, NM 87505

State of New Mexico
Energy, Minerals & Natural Resources Department

OIL CONSERVATION DIVISION
2040 South Pacheco
Santa Fe, NM 87505

Form C-101
Revised October 18, 1994
Instructions on back
Submit to Appropriate District Office
State Lease - 6 Copies
Fee Lease - 5 Copies

☐ AMENDED REPORT

APPLICATION FOR PERMIT TO DRILL, RE-ENTER, DEEPEN, PLUGBACK, OR ADD A ZONE

Operator Name and Address. <i>Amtex Energy, Inc. P.O. Box 3418 Midland, TX 79702</i>		OGRID Number <i>000785</i>
		API Number <i>30-025-24949</i>
Property Code <i>1226</i>	Property Name <i>Record</i>	Well No. <i>5</i>

7 Surface Location

UL or lot no.	Section	Township	Range	Lot Idn	Feet from the	North/South line	Feet from the	East/West line	County
<i>E</i>	<i>26</i>	<i>19S</i>	<i>35E</i>		<i>1980</i>	<i>North</i>	<i>660</i>	<i>West</i>	<i>Lea</i>

8 Proposed Bottom Hole Location If Different From Surface

UL or lot no.	Section	Township	Range	Lot Idn	Feet from the	North/South line	Feet from the	East/West line	County

Proposed Pool 1 <i>Undesignated South Pearl Bone Spring</i>	Proposed Pool 2
--	-----------------

Work Type Code <i>E</i>	Well Type Code <i>O</i>	Cable/Rotary <i>R</i>	Lease Type Code <i>P</i>	Ground Level Elevation <i>3715'</i>
Multiple <i>No</i>	Proposed Depth <i>11,000</i>	Formation <i>Bone Spring</i>	Contractor	Spud Date <i>1/27/97</i>

21 Proposed Casing and Cement Program

Hole Size	Casing Size	Casing weight/foot	Setting Depth	Sacks of Cement	Estimated TOC
<i>20"</i>	<i>16"</i>	<i>65 #</i>	<i>510'</i>	<i>400 LWx200"c</i>	<i>Surface</i>
<i>12.25"</i>	<i>9.625"</i>	<i>40-47 #</i>	<i>5002'</i>	<i>300 LWx200"c</i>	<i>250'</i>
<i>8.5"</i>	<i>5.5"</i>	<i>17 #</i>	<i>10850'</i>	<i>825 LWx845 Prem</i>	<i>Surface</i>

22 Describe the proposed program. If this application is to DEEPEN or PLUG BACK give the data on the present productive zone and proposed new productive zone. Describe the blowout prevention program, if any. Use additional sheets if necessary.

Amtex Energy, Inc. proposes to re-enter to a depth sufficient to test the Bone Spring formation for oil. If productive, 5.5" casing will be cemented at total depth. If nonproductive the well will be plugged and abandoned.

Note: This well was originally drilled by Dorchester Exploration, Inc. and the original well name was the Henry Record Well No. 2.

Permit Expires 1 Year From Approval
Date Unless Drilling Unlawful

23 I hereby certify that the information given above is true and complete to the best of my knowledge and belief.

Signature: *William J. Savage*
Printed name: *William J. Savage*
Title: *President*

1/23/97

OIL CONSERVATION DIVISION

Approved by: ORIGINAL SIGNED BY JERRY SEXTON

DISTRICT I SUPERVISOR

Title:

Approval Date: *JAN 23 1997*

Expiration Date:

Received

Woods

2008/09/29

MINIMUM BLOWOUT PREVENTER REQUIREMENTS

5,000 psi Working Pressure

5 MWP

Amtex-Record Well No. 5
1980' FNL and 660' FWL
Sec. 26, T19S, R35E,
Lea County, New Mexico

EXHIBIT 1

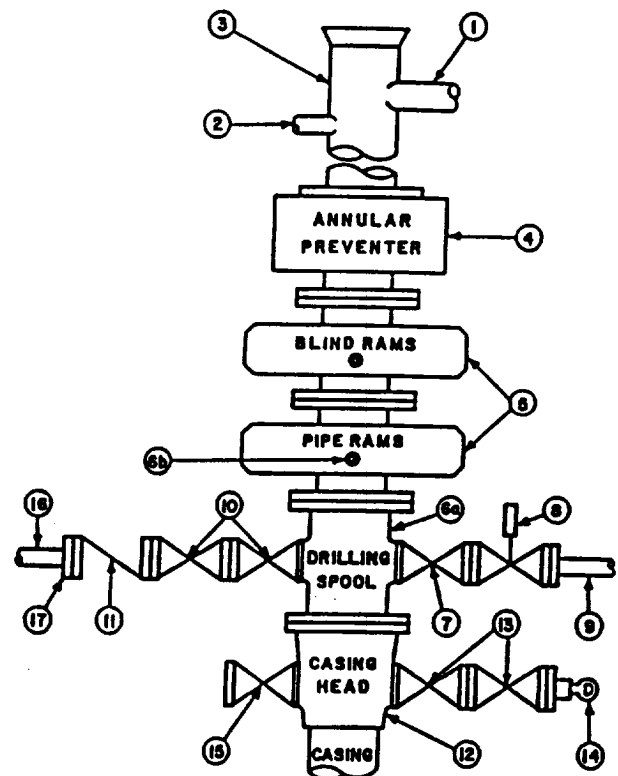
STACK REQUIREMENTS

No.	Item	Min. I.D.	Min. Nominal
1	Flowline		
2	Fill up line		2"
3	Drilling nipple		
4	Annular preventer		
5	Two single or one dual hydraulically operated rams		
6a	Drilling spool with 2" min. kill line and 3" min. choke line outlets or		
6b	2" minimum kill line and 3" minimum choke line outlets in ram. (Alternate to 6a above.)		
7	Gate valve	3-1/8"	
8	Gate valve — power operated	3-1/8"	
9	Line to choke manifold		3"
10	Gate valves	2-1/16"	
11	Check valve	2-1/16"	
12	Casing head		
13	Gate valves	1-13/16"	
14	Pressure gauge with needle valve		
15	Gate Valve or Flanged Valve w/Control Plug	1-13/16"	
16	Kill line to rig mud pump manifold		2"

OPTIONAL

17	Roadside connection to kill line		2"
----	----------------------------------	--	----

CONFIGURATION A



CONTRACTOR'S OPTION TO FURNISH:

1. All equipment and connections above bradenhead or casinghead.
2. Automatic accumulator (80 gallon, minimum) capable of closing BOP in 30 seconds or less and, holding them closed against full rated working pressure.
3. BOP controls, including control for hydraulically operated wing valve, to be located near drillers position with remote controls located away from rig floor.
4. Kelly equipped with Kelly cock and Hydril Kelly valve, or its approved equivalent.
5. Hydril Kelly valve or its approved equivalent and approved inside blow-out preventer to fit drill pipe in use on derrick floor at all times.
6. Kelly saver-sub equipped with rubber casing protector at all times.
7. Extra set of pipe rams to fit pipe being used on location.
8. Plug type blowout preventer tester.
9. Type RX ring gaskets in place of Type R.

10. Outlet for Halliburton on kill line.

MEC TO FURNISH:

1. Bradenhead or casinghead and side valves.
2. Wear bushing, if required.

GENERAL NOTES:

1. Deviations from this drawing may be made only with the express permission of MEC's Drilling Manager.
2. All connections, valves, fittings, piping, etc., subject to well or pump pressure must be flanged (suitable clamp connections acceptable) and have minimum working pressure equal to rated working pressure of preventers. Valves must be full opening and suitable for high pressure mud service.
3. Controls to be of standard design and each marked, showing opening and closing position.
4. Chokes will be positioned so as not to hamper or delay changing of choke

beans. Replaceable parts for adjustable choke, other bean sizes, retainers, and choke wrenches to be conveniently located for immediate use.

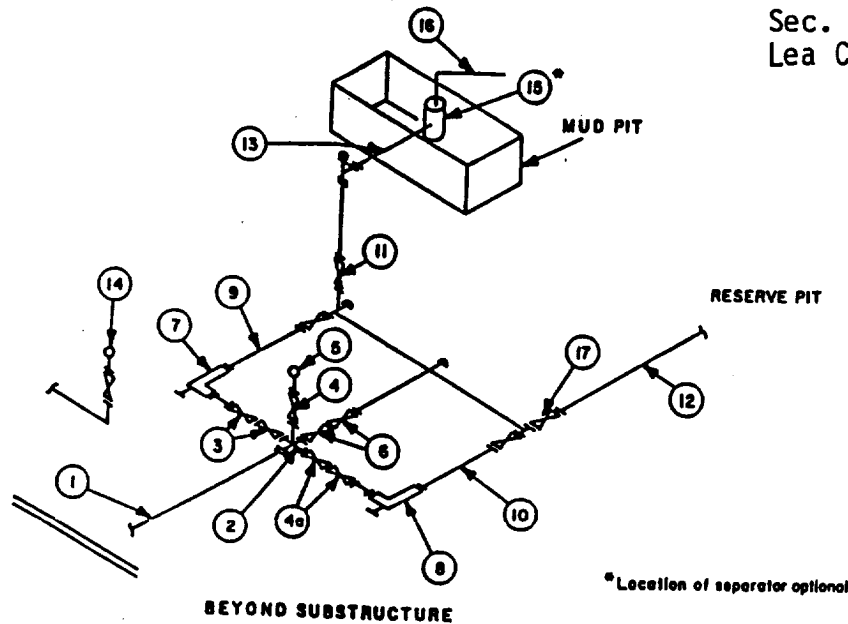
5. All valves to be equipped with handwheels or handles ready for immediate use.
6. Choke lines must be suitably anchored.
7. Handwheels and extensions to be connected and ready for use.
8. Valves adjacent to drilling spool to be kept open. Use outside valves except for emergency.
9. All seamless steel control piping (3000 psi working pressure) to have flexible joints to avoid stress. Approved hoses will be permitted.
10. Casinghead connections shall not be used except in case of emergency.
11. Do not use kill line for routine fill-up operations.
12. Rig pumps ready for hook-up to BOP control manifold for emergency use only.

MINIMUM CHOKE MANIFOLD
3,000, 5,000 and 10,000 PSI Working Pressure

3 MWP - 5 MWP - 10 MWP

Amtex-Record Well No. 5
1980' FNL and 660' FWL
Sec. 26, T19S, R35E,
Lea County, New Mexico

EXHIBIT 1-A



No.		MINIMUM REQUIREMENTS								
		3,000 MWP			5,000 MWP			10,000 MWP		
		I.D.	NOMINAL	RATING	I.D.	NOMINAL	RATING	I.D.	NOMINAL	RATING
1	Line from drilling spool		3"	3,000		3"	5,000		3"	10,000
2	Cross 3"x3"x3"x2"			3,000			5,000			
	Cross 3"x3"x3"x3"									
3	Valves(1) Gate <input type="checkbox"/> Plug <input type="checkbox"/> (2)	3-1/8"		3,000	3-1/8"		5,000	3-1/8"		10,000
4	Valve Gate <input type="checkbox"/> Plug <input type="checkbox"/> (2)	1-13/16"		3,000	1-13/16"		5,000	1-13/16"		10,000
4a	Valves(1)	2-1/16"		3,000	2-1/16"		5,000	3-1/8"		10,000
5	Pressure Gauge			3,000			5,000			10,000
6	Valves Gate <input type="checkbox"/> Plug <input type="checkbox"/> (2)	3-1/8"		3,000	3-1/8"		5,000	3-1/8"		10,000
7	Adjustable Choke(3)	2"		3,000	2"		5,000	2"		10,000
8	Adjustable Choke	1"		3,000	1"		5,000	2"		10,000
9	Line		3"	3,000		3"	5,000		3"	10,000
10	Line		2"	3,000		2"	5,000		3"	10,000
11	Valves Gate <input type="checkbox"/> Plug <input type="checkbox"/> (2)	3-1/8"		3,000	3-1/8"		5,000	3-1/8"		10,000
12	Lines		3"	1,000		3"	1,000		3"	2,000
13	Lines		3"	1,000		3"	1,000		3"	2,000
14	Remote reading compound standpipe pressure gauge			3,000			5,000			10,000
15	Gas Separator		2'x5'			2'x5'			2'x5'	
16	Line		4"	1,000		4"	1,000		4"	2,000
17	Valves Gate <input type="checkbox"/> Plug <input type="checkbox"/> (2)	3-1/8"		3,000	3-1/8"		5,000	3-1/8"		10,000

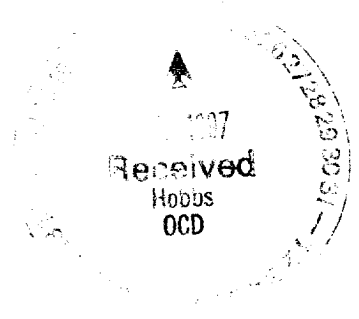
(1) Only one required in Class 3M.

(2) Gate valves only shall be used for Class 10M.

(3) Remote operated hydraulic choke required on 5,000 psi and 10,000 psi for drilling.

EQUIPMENT SPECIFICATIONS AND INSTALLATION INSTRUCTIONS

- All connections in choke manifold shall be welded, studded, flanged or Cameron clamp of comparable rating.
- All flanges shall be API 6B or 6BX and ring gaskets shall be API RX or BX. Use only BX for 10 MWP.
- All lines shall be securely anchored.
- Chokes shall be equipped with tungsten carbide seats and needles, and replacements shall be available.
- Choke manifold pressure and standpipe pressure gauges shall be available at the choke manifold to assist in regulating chokes. As an alternate with automatic chokes, a choke manifold pressure gauge shall be located on the rig floor in conjunction with the standpipe pressure gauge.
- Line from drilling spool to choke manifold should be as straight as possible. Lines downstream from chokes shall make turns by large bends or 90° bends using bull plugged tees.
- Discharge lines from chokes, choke bypass and from top of gas separator should vent as far as practical from the well.



District I
PO Box 1980, Hobbs, NM 88241-1980
District II
811 South First, Artesia, NM 88210
District III
1000 Rio Brazos Rd., Aztec, NM 87410
District IV
2040 South Pacheco, Santa Fe, NM 87505

State of New Mexico
Energy, Minerals & Natural Resources Department

OIL CONSERVATION DIVISION
2040 South Pacheco
Santa Fe, NM 87505

Form C-102
Revised October 18, 1994
Instructions on back
Submit to Appropriate District Office
State Lease - 4 Copies
Fee Lease - 3 Copies

☐ AMENDED REPORT

WELL LOCATION AND ACREAGE DEDICATION PLAT

API Number 30-025-24949		Pool Code Undesignated	Pool Name South Pearl Bone Spring
Property Code 1226	Property Name Record		Well Number 5
OGRID No. 000785	Operator Name Amtex Energy, Inc.		Elevation 3715

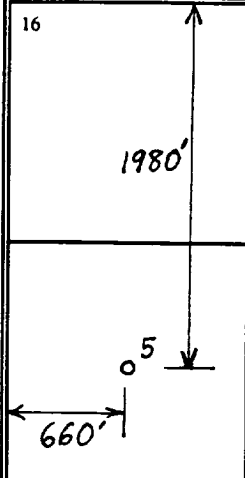

¹⁰ Surface Location

UL or lot no. E	Section 26	Township 19S	Range 35E	Lot Idn	Feet from the 1980	North/South line North	Feet from the 660	East/West line West	County Lea
--------------------	---------------	-----------------	--------------	---------	-----------------------	---------------------------	----------------------	------------------------	---------------

¹¹ Bottom Hole Location If Different From Surface

UL or lot no.	Section	Township	Range	Lot Idn	Feet from the	North/South line	Feet from the	East/West line	County
¹² Dedicated Acres 40		¹³ Joint or Infill N		¹⁴ Consolidation Code		¹⁵ Order No.			

NO ALLOWABLE WILL BE ASSIGNED TO THIS COMPLETION UNTIL ALL INTERESTS HAVE BEEN CONSOLIDATED
OR A NON-STANDARD UNIT HAS BEEN APPROVED BY THE DIVISION

¹⁶ 					¹⁷ OPERATOR CERTIFICATION I hereby certify that the information contained herein is true and complete to the best of my knowledge and belief  Signature William J. Savage Printed Name President Title 1/23/97 Date
					¹⁸ SURVEYOR CERTIFICATION I hereby certify that the well location shown on this plat was plotted from field notes of actual surveys made by me or under my supervision, and that the same is true and correct to the best of my belief. Date of Survey Signature and Seal of Professional Surveyer: Certificate Number

