

NO. OF COPIES RECEIVED
DISTRIBUTION
SANTA FE
FILE
U.S.G.S.
LAND OFFICE
OPERATOR

NEW MEXICO OIL CONSERVATION COMMISSION

Form C-101
Revised 1-1-65

5A. Indicate Type of Lease
STATE [X] FEE []
5. State Oil & Gas Lease No.
K-5189
7. Unit Agreement Name
State Section "6" Com
8. Farm or Lease Name
State Section "6" Com
9. Well No.
1
10. Field and Pool, or Wildcat
Undesignated
12. County
Lea

APPLICATION FOR PERMIT TO DRILL, DEEPEN, OR PLUG BACK
1a. Type of Work
b. Type of Well
DRILL [X] DEEPEN [] PLUG BACK []
OIL WELL [] GAS WELL [X] OTHER [] SINGLE ZONE [X] MULTIPLE ZONE []
2. Name of Operator
Marathon Oil Company
3. Address of Operator
Box 2409 Hobbs, New Mexico 88240
4. Location of Well
UNIT LETTER N LOCATED 1980 FEET FROM THE West LINE
AND 660 FEET FROM THE South LINE OF SEC. 6 TWP. 17S RGE. 35E NMPM
19. Proposed Depth
12,300'
19A. Formation
Atoka Morrow
20. Rotary or C.T.
12,300'
21. Elevations (Show whether DF, RT, etc.)
GL 4017' Est
21A. Kind & Status Plug. Bond
Current
21B. Drilling Contractor
McVay Drilling Co.
22. Approx. Date Work will start
May 10, 1975

PROPOSED CASING AND CEMENT PROGRAM

Table with 6 columns: SIZE OF HOLE, SIZE OF CASING, WEIGHT PER FOOT, SETTING DEPTH, SACKS OF CEMENT, EST. TOP. Rows include 17-1/2", 12-1/4", and 8-1/2" hole sizes with corresponding casing and cement data.

APPROVAL VALID
FOR 90 DAYS FROM DATE
OF DRILLING PERMIT,

- 1. Drill to approximate depth of 12,300'.
2. Cement and test all casing by approved methods.
3. While drilling, well is to be equipped with series 900 Cameron BOP or equivalent. BOP to be equipped with pipe rams and blank rams. Remote controls will be located on derrick floor with closing unit located a minimum of 75' from the well head.
4. During completion, well well be equipped with 900 Cameron BOP or equivalent. BOP to be equipped with pipe and blank rams.

* Top of liner at approximately 4900' to be equipped w/liner-hanger and squeezed with cement.

IN ABOVE SPACE DESCRIBE PROPOSED PROGRAM; IF PROPOSAL IS TO DEEPEN OR PLUG BACK, GIVE DATA ON PRESENT PRODUCTIVE ZONE AND PROPOSED NEW PRODUCTIVE ZONE. GIVE BLOWOUT PREVENTER PROGRAM, IF ANY.

I hereby certify that the information above is true and complete to the best of my knowledge and belief.

Signed [Signature] Title Petroleum Engineer Date 5-9-75

APPROVED BY [Signature] TITLE Geologist DATE MAY 12 1975
CONDITIONS OF APPROVAL, IF ANY:

RECEIVED

MAY - 9 1975

OIL CONSERVATION COMM.
HOBBS, N. M.

NEW MEXICO OIL CONSERVATION COMMISSION
WELL LOCATION AND ACREAGE DEDICATION PLAT

Form C-102
Supersedes C-128
Effective 1-1-65

All distances must be from the outer boundaries of the Section

Operator Marathon Oil Company		Lease State Section 6 Com.			Well No. 1
Section N	Section 6	Township 17 South	Range 35 East	County Lea	
Actual Location of Well: 1980 feet from the West line and 660 feet from the South line					
Ground Elev. 4017.2	Producing Formation Atoka Morrow	Pool Undesignated		Dedicated Acreage: 314.95 Acres	

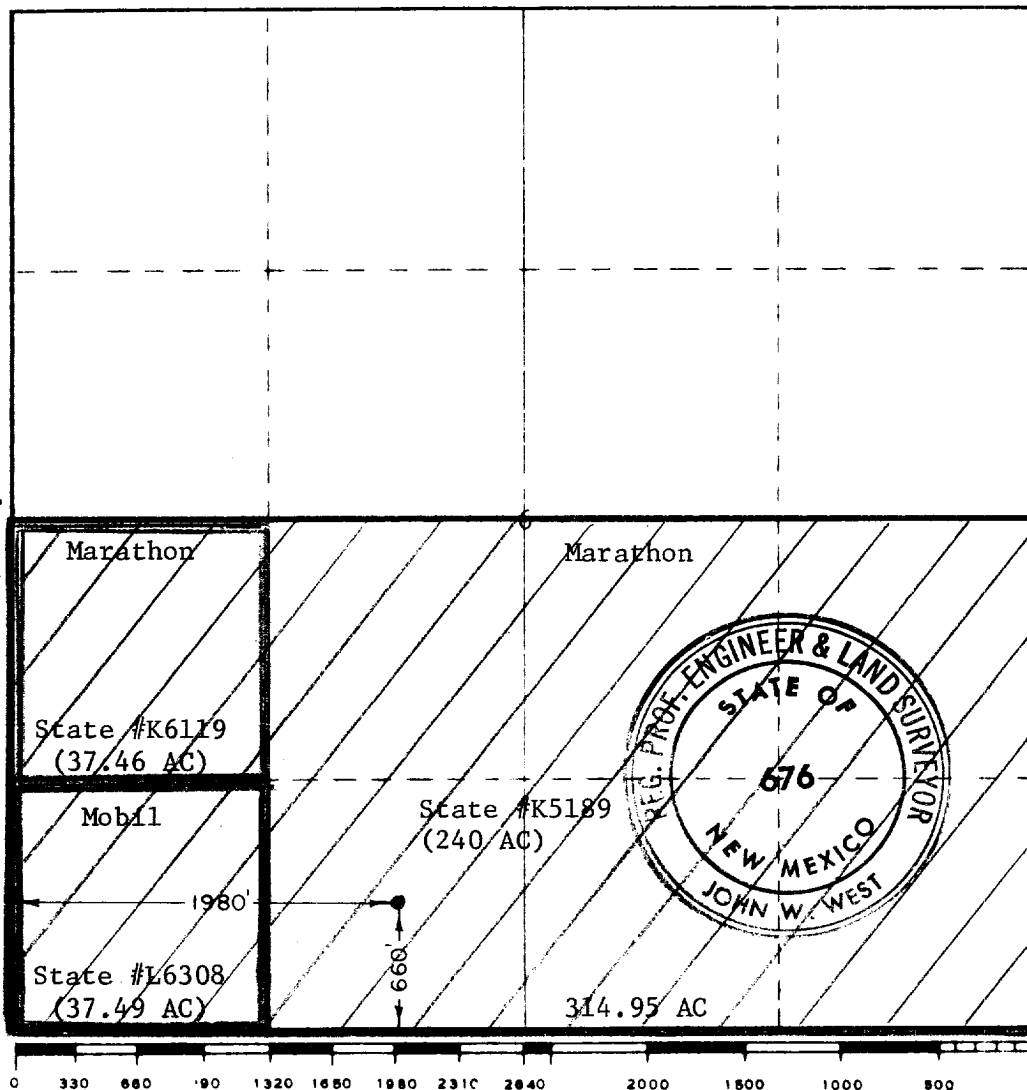
1. Outline the acreage dedicated to the subject well by colored pencil or hatchure marks on the plat below.
2. If more than one lease is dedicated to the well, outline each and identify the ownership thereof (both as to working interest and royalty).
3. If more than one lease of different ownership is dedicated to the well, have the interests of all owners been consolidated by communitization, unitization, force-pooling, etc?

☒ Yes ☐ No If answer is "yes," type of consolidation Communitization

If answer is "no," list the owners and tract descriptions which have actually been consolidated. (Use reverse side of this form if necessary.)

No allowable will be assigned to the well until all interests have been consolidated (by communitization, unitization, forced-pooling, or otherwise) or until a non-standard unit, eliminating such interests, has been approved by the Commission.

R-35E



CERTIFICATION

I hereby certify that the information contained herein is true and complete to the best of my knowledge and belief.

Name
M. L. Johnston
Position
Petroleum Engineer
Company
Marathon Oil Company
Date
April 29, 1975

I hereby certify that the well location shown on this plat was plotted from field notes of actual surveys made by me or under my supervision, and that the same is true and correct to the best of my knowledge and belief.

Date Surveyed
April 10, 1975
Registered Professional Engineer and/or Land Surveyor

John W. West
Certificate No.
676

RECEIVED

MAY - 9 1975

OIL CONSERVATION COMM.
HOBBS, N. M.