

NO. OF COPIES RECEIVED	
DISTRIBUTION	
SANTA FE	
FILE	
U.S.G.S.	
LAND OFFICE	
OPERATOR	

NEW MEXICO OIL CONSERVATION COMMISSION

Form C-101
Revised 1-1-65

5A. Indicate Type of Lease	
STATE <input checked="" type="checkbox"/>	FEE <input type="checkbox"/>
5. State Oil & Gas Lease No.	
7. Unit Agreement Name	
8. Firm or Lease Name	
Central Vacuum Unit	
9. Well No.	
70	
10. Field and Pool, or Wildcat	
Vacuum Grayburg-S.A.	
11. County	
Lea	
12. Elevation (Show whether DE, RT, etc.)	
4800'	
13. Kind & Status Plug. Bond	
Grayburg-S.A.	
14. Rotary or C.T.	
Rotary	
15. Approx. Date Work will start	
11-25-77	

APPLICATION FOR PERMIT TO DRILL, DEEPEN, OR PLUG BACK

1a. Type of Work	
b. Type of Well	
DRILL <input checked="" type="checkbox"/>	DEEPEN <input type="checkbox"/>
OIL WELL <input type="checkbox"/>	GAS WELL <input type="checkbox"/>
OTHER Water Injection	
SINGLE ZONE <input checked="" type="checkbox"/>	
MULTIPLE ZONE <input type="checkbox"/>	
2. Name of Operator	
Texaco Inc.	
3. Address of Operator	
P. O. Box 3109 Midland, Texas 79702	
4. Location of Well	
UNIT LETTER E	LOCATED 2630 FEET FROM THE North LINE
AND 1310 FEET FROM THE West	LINE OF SEC. 36 TOWNSHIP 17-S RANGE 34-E
5. County	
Lea	
6. Elevation (Show whether DE, RT, etc.)	
4800'	
7. Kind & Status Plug. Bond	
Grayburg-S.A.	
8. Rotary or C.T.	
Rotary	
9. Approx. Date Work will start	
11-25-77	

23.

PROPOSED CASING AND CEMENT PROGRAM

SIZE OF HOLE	SIZE OF CASING	WEIGHT PER FOOT	SETTING DEPTH	SACKS OF CEMENT	EST. TOP
11"	8 5/8"	24#/K-55 STC	350'	200 sx	Circulate
7 7/8"	4 1/2"	10.5#/K-55STC	4800'	2800 sx	Circulate

Surface Casing: 200 sx class "C" w/2% Cacl, 14.8#/gal < 300% to circulate-cement must circulate.

Production Casing: Cement first stage w/250 sx Halliburton Lite w/5#/sx Gilsonite & 8#/sx salt followed by 500 sx class "C" cement with 8#/sx salt & 1% CFR-2: open DV tool @ 2500' circulate 4-6 hrs. Second stage 1800 sx Halliburton Lite w/18% salt + 250 sx class "C" cement w/18% salt.

APPROVED
BY
DATE

EXPIRES Feb. 14, 1978

IN ABOVE SPACE DESCRIBE PROPOSED PROGRAM: IF PROPOSAL IS TO DEEPEN OR PLUG BACK, GIVE DATA ON PRESENT PRODUCTIVE ZONE AND PROPOSED NEW PRODUCTIVE ZONE. GIVE BLOWOUT PREVENTER PROGRAM, IF ANY.

I hereby certify that the information above is true and complete to the best of my knowledge and belief.

Signed John W. Runyan Title Assistant Div. Petr. Engr. Date 11-10-77

(This space for State Use)

APPROVED BY John W. Runyan TITLE Assistant Div. Petr. Engr. DATE 11-10-77

CONDITIONS OF APPROVAL, IF ANY:

NEW MEXICO OIL CONSERVATION COMMISSION
WELL LOCATION AND ACREAGE DEDICATION PL.

Form C-102
Supersedes C-128
Effective 1-1-65

All distances must be from the outer boundaries of the Section.

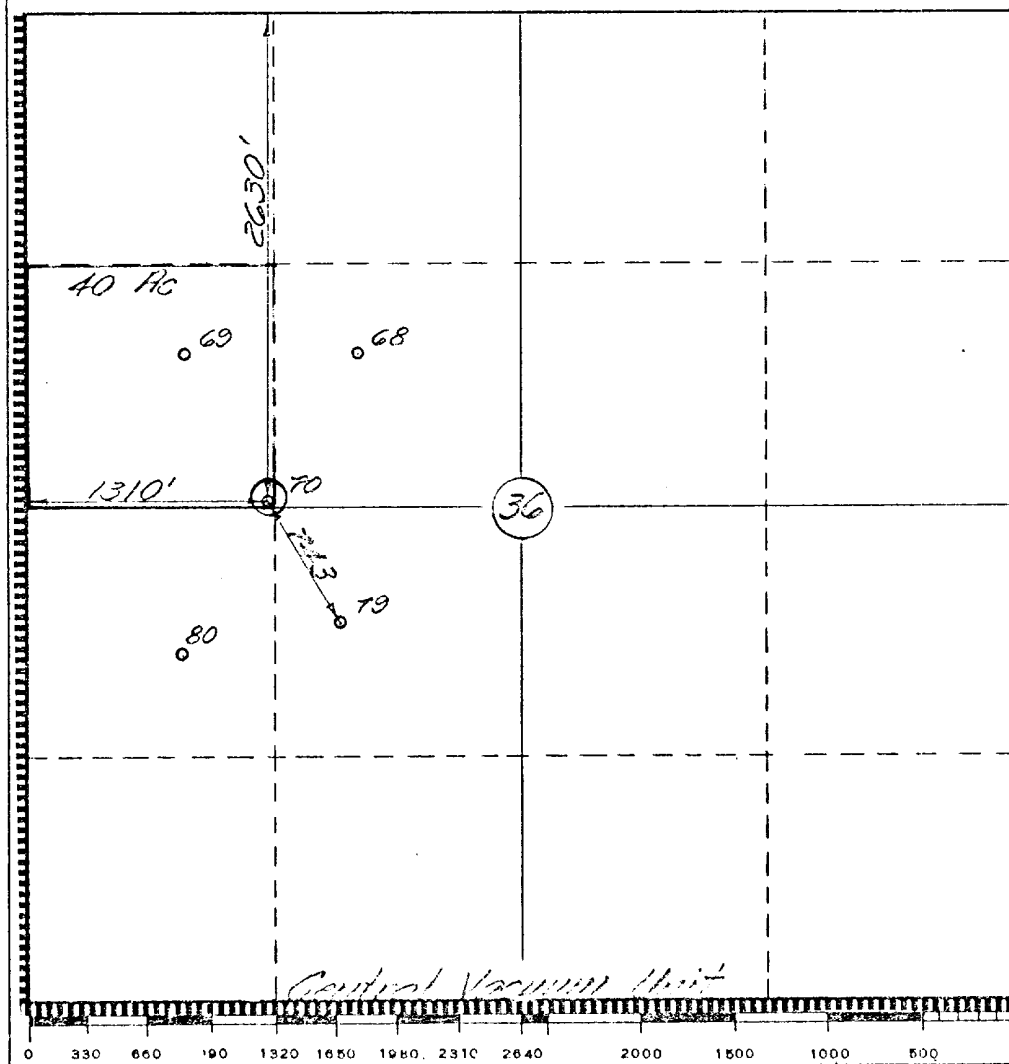
Operator Texaco Inc.		Lease Central Vacuum Unit		Well No. 70
Unit Letter E	Section 36	Township T-17-S	Range R-34-E	County Lea
Actual Footage Location of Well: 2630 feet from the North line and 1310 feet from the West line Sec. 36				
Ground Level Elev. 4005'	Producing Formation Grayburg San Andres	Pool Vacuum Grayburg-San Andres	Dedicated Acreage: 40 Acres	

1. Outline the acreage dedicated to the subject well by colored pencil or hatchure marks on the plat below.
2. If more than one lease is dedicated to the well, outline each and identify the ownership thereof (both as to working interest and royalty).
3. If more than one lease of different ownership is dedicated to the well, have the interests of all owners been consolidated by communitization, unitization, force-pooling, etc?

☐ Yes ☐ No If answer is "yes," type of consolidation _____

If answer is "no," list the owners and tract descriptions which have actually been consolidated. (Use reverse side of this form if necessary.) _____

No allowable will be assigned to the well until all interests have been consolidated (by communitization, unitization, forced-pooling, or otherwise) or until a non-standard unit, eliminating such interests, has been approved by the Commission.



CERTIFICATION

I hereby certify that the information contained herein is true and complete to the best of my knowledge and belief.

Name
B. L. Filand
Position
Division Surveyor
Company
Texaco Inc.
Date
11-10-77

I hereby certify that the well location shown on this plat was plotted from field notes of actual surveys made by me or under my supervision, and that the same is true and correct to the best of my knowledge and belief.

Date Surveyed
11-7-77
Registered Professional Engineer and/or Land Surveyor
B. L. Filand
Certificate No.
4386

APPROVED BY