

9-11-25/33

NEW MEXICO OIL CONSERVATION COMMISSION

Form C-101  
Revised 1-1-65

NO. OF COPIES RECEIVED		
DISTRIBUTION		
SANTA FE		
FILE		
U.S.G.S.		
LAND OFFICE		
OPERATOR		

5A. Indicate Type of Lease	
STATE <input checked="" type="checkbox"/>	FEE <input type="checkbox"/>
5. State Oil & Gas Lease No.	

APPLICATION FOR PERMIT TO DRILL, DEEPEN, OR PLUG BACK

1a. Type of Work		7. Unit Agreement Name	
b. Type of Well OIL WELL <input type="checkbox"/> GAS WELL <input type="checkbox"/> OTHER <input checked="" type="checkbox"/> Water Injection		8. Farm or Lease Name Central Vacuum Unit	
2. Name of Operator Texaco Inc.		9. Well No. 93	
3. Address of Operator P. O. Box 3109 Midland, Texas 79702		10. Field and Pool, or Wildcat Vacuum Grayburg-S.A.	
4. Location of Well UNIT LETTER M LOCATED 10 FEET FROM THE South LINE AND 1136 FEET FROM THE West LINE OF SEC. 31 TWP. 17-S RGE. 35-E NMPM		12. County Lea	
19. Proposed Depth 4800'		19A. Formation Grayburg-S.A.	
20. Rotary or C.T. Rotary		21. Elevations (Show whether DF, RT, etc.) 3982' GR	
21A. Kind & Status Plug, Bond		21B. Drilling Contractor	
22. Approx. Date Work will start 11-25-77		23.	

PROPOSED CASING AND CEMENT PROGRAM

SIZE OF HOLE	SIZE OF CASING	WEIGHT PER FOOT	SETTING DEPTH	SACKS OF CEMENT	EST. TOP
11"	8 5/8"	24#K-55 STC	350'	200 sx	Circulate
7 7/8"	4 1/2"	10.5#K-55STC	4800'	2800 sx	Circulate

Surface Casing: 200 sx class "C" w/2% Cacl, 14.8#/gal <300% to circulate-  
cement must circulate.

Production Casing: Cement first stage w/250 sx Halliburton Lite w/5#/sx  
Gilsonite & 8#/sx salt followed by 500 sx class "C" cement with 8#/sx  
salt & 1/2% CFR-2 : open DV tool @ 2500' circulate 4-6 hrs. Second stage  
1800 sx Halliburton Lite w/18% salt + 250 sx class "C" cement w/18% salt.

IN ABOVE SPACE DESCRIBE PROPOSED PROGRAM: IF PROPOSAL IS TO DEEPEN OR PLUG BACK, GIVE DATA ON PRESENT PRODUCTIVE ZONE AND PROPOSED NEW PRODUCTIVE ZONE. GIVE BLOWOUT PREVENTER PROGRAM, IF ANY.

I hereby certify that the information above is true and complete to the best of my knowledge and belief.

Signed [Signature] Title Assistant Div. Petr. Engr. Date 11-10-77

(This space for State Use)

SUPERVISOR DISTRICT 1

JAN 9 1978

APPROVED BY [Signature] TITLE DATE

CONDITIONS OF APPROVAL, IF ANY:

NEW MEXICO OIL CONSERVATION COMMISSION  
WELL LOCATION AND ACREAGE DEDICATION PLAT

Form C-102  
Supersedes C-128  
Effective 1-1-65

All distances must be from the outer boundaries of the Section.

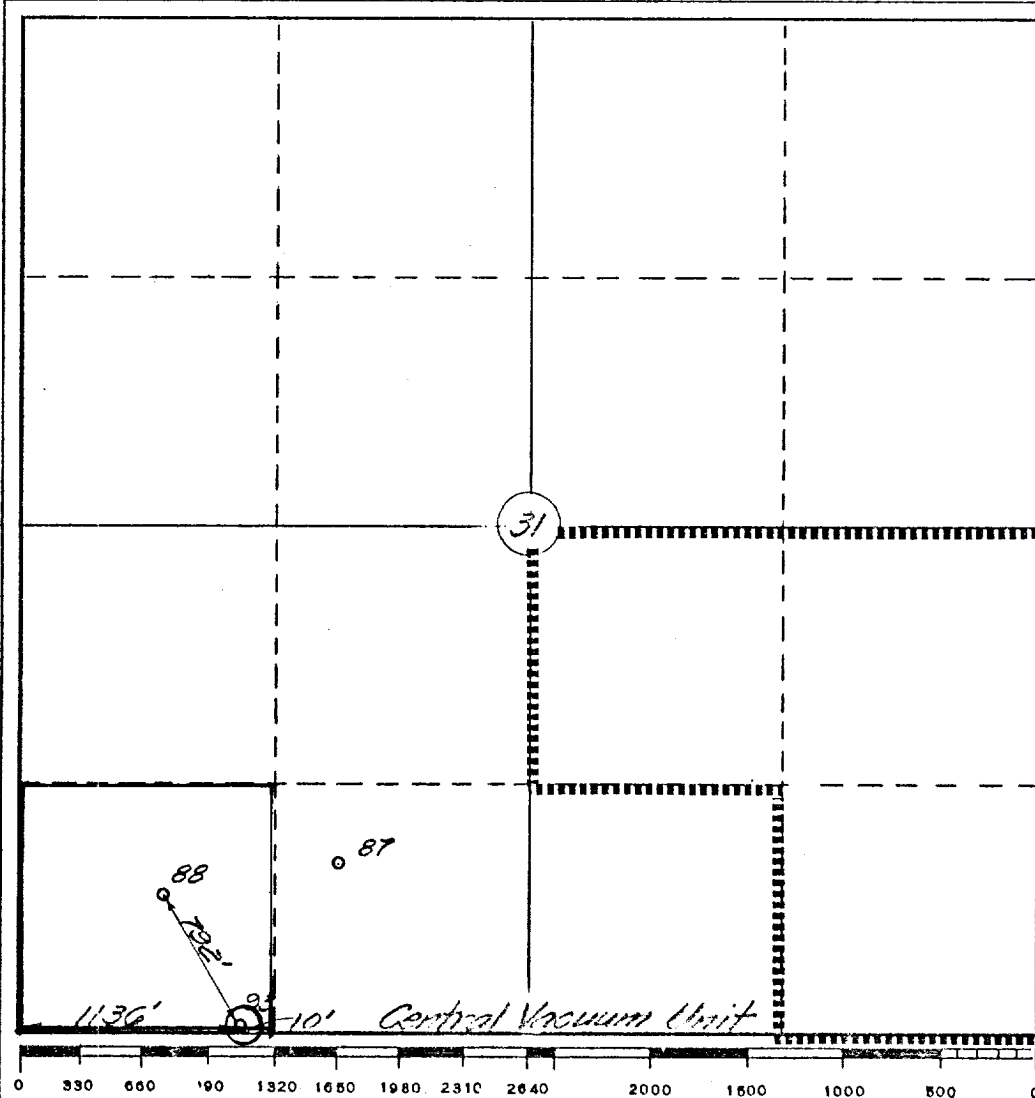
Operator <b>Texaco Inc.</b>		Lease <b>Central Vacuum Unit</b>		Well No. <b>93</b>
Unit Letter <b>M</b>	Section <b>31</b>	Township <b>T-17-S</b>	Range <b>R-35-E</b>	County <b>Lea</b>
Actual Footage Location of Well:				
<b>10</b> feet from the <b>South</b> line and <b>1136</b> feet from the <b>West</b> line Sec. <b>31</b>				
Ground Level Elev. <b>3982'</b>	Producing Formation <b>Grayburg San Andres</b>	Pool <b>Vacuum Grayburg-San Andres</b>	Dedicated Acreage: <b>40</b> Acres	

- Outline the acreage dedicated to the subject well by colored pencil or hachure marks on the plat below.
- If more than one lease is dedicated to the well, outline each and identify the ownership thereof (both as to working interest and royalty).
- If more than one lease of different ownership is dedicated to the well, have the interests of all owners been consolidated by communitization, unitization, force-pooling, etc?

☐ Yes ☐ No If answer is "yes," type of consolidation \_\_\_\_\_

If answer is "no," list the owners and tract descriptions which have actually been consolidated. (Use reverse side of this form if necessary.) \_\_\_\_\_

No allowable will be assigned to the well until all interests have been consolidated (by communitization, unitization, forced-pooling, or otherwise) or until a non-standard unit, eliminating such interests, has been approved by the Commission.



CERTIFICATION

I hereby certify that the information contained herein is true and complete to the best of my knowledge and belief.

*B. L. Eiland*

Name

**B. L. Eiland**

Position

**Division Surveyor**

Company

**Texaco Inc.**

Date

**11-10-77**

I hereby certify that the well location shown on this plat was plotted from field notes of actual surveys made by me or under my supervision, and that the same is true and correct to the best of my knowledge and belief.

Date Surveyed

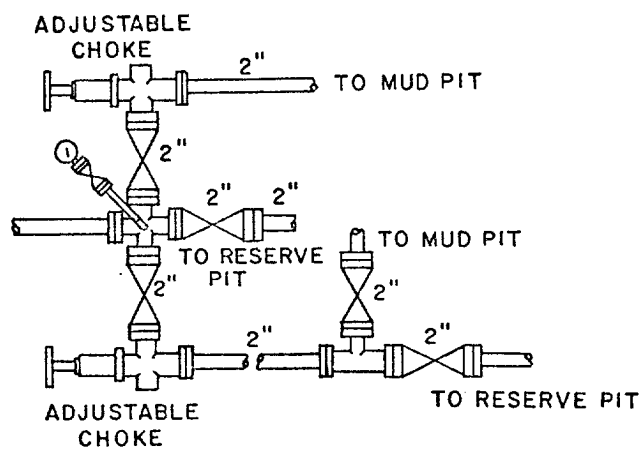
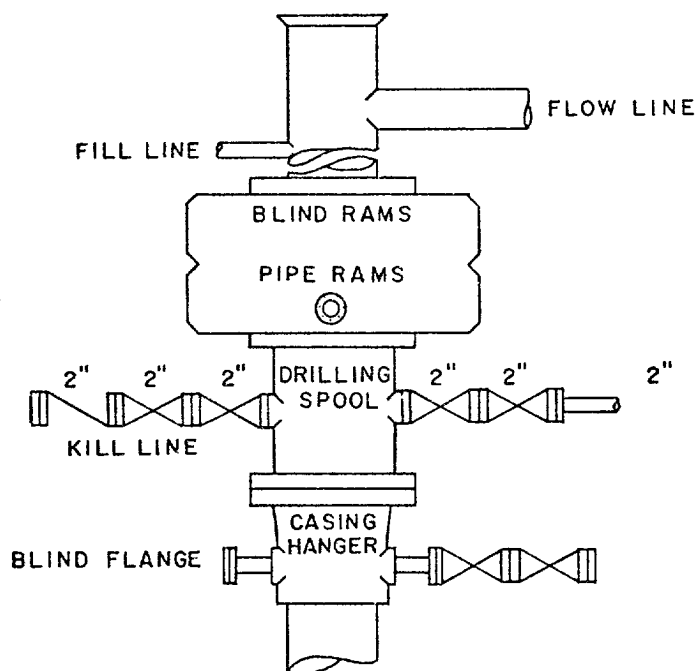
**11-7-77**

Registered Professional Engineer and/or Land Surveyor

*B. L. Eiland*  
**B. L. Eiland**

Certificate No.

**4386**



SCALE: NONE	DATE	EST. NO.	DRG. NO.
DRAWN BY JWD			
CHECKED BY RDW			
APPROVED BY			



TEXACO, INC.  
PRODUCING DEPARTMENT-U.S. (EAST)  
MIDLAND, TEXAS



EXHIBIT "B"



COUNTY - LEA		FIELD Vacuum		STATE N.M.	
OPR SHELL OIL COMPANY		2 State "D"		MAP	
Sec. 31, T-17-S, R-35-E		760' fr S Line & 560' fr W Line of Sec.		CO-ORD	
Spudded 2-1-64		Completed 2-24-64		CLASS	
CSG & SX - TUBING		FORMATION	DATUM	FORMATION	DATUM
8 5/8" 1562' 500		LOG:			
5 1/2" 6899' 450		Yates 2830			
		7-R 3139			
		Queen 3710			
		SA 4314			
		Glor 5877			
		Padd 5987			
		TD 6900', PBD 6103'			

IP Paddock Perfs 5990-6070' Flwd 221 BOPD. Pot. Based on 13 hr test of 120 BO thru 16/64" chk. TP 250#, Gravity 38.6, GOR 650.

Distribution limited and publication prohibited by subscribers' agreement.  
 Reproduction rights reserved by Williams & Lee Scouting Service, Inc.

CONT. DATE PROP DEPTH 6900' TYPE

F.R. 12-19-63; Oper's Elev. 3994' DF  
 PD 6900' - Blinebry  
 2-10-64 Drlg. 4680'.  
 2-17-64 Drlg. 6585'.  
 2-24-64 TD 6900', PBD 6103', COMPLETED.  
 Perf @ 5990', 5991', 5997', 5998', 6000', 6002',  
 6015', 6016', 6020', 6021', 6025', 6027', 6032',  
 6033', 6039' & 6070' W/1 SPI.  
 Ac. 1500 gals.  
 LOG TOPS: Blinebry 6569'