

NO. OF COPIES RECEIVED	
DISTRIBUTION	
SANTA FE	
FILE	
U.S.G.S.	
LAND OFFICE	
OPERATOR	

NEW MEXICO OIL CONSERVATION COMMISSION

Form C-101
Revised 1-1-65

5A. Indicate Type of Lease	
STATE <input checked="" type="checkbox"/>	FEE <input type="checkbox"/>
5. State Oil & Gas Lease No.	
7. Unit Agreement Name	
8. Farm or Lease Name	
Central Vacuum Unit	
9. Well No.	
94	
10. Field and Pool, or Wildcat	
Vacuum Grayburg-S.A.	
12. County	
Lea	
13. Proposed Depth	19A. Formation
4800'	Grayburg-S.A.
20. Rotary or C.T.	
Rotary	
21. Elevations (Show whether DE, RT, etc.)	22. Approx. Date Work will start
3969' GR	11-25-77

1a. Type of Work	
b. Type of Well	
DRILL <input checked="" type="checkbox"/>	DEEPEN <input type="checkbox"/>
OIL WELL <input type="checkbox"/>	GAS WELL <input type="checkbox"/>
OTHER Water Injection	
SINGLE ZONE <input checked="" type="checkbox"/>	
MULTIPLE ZONE <input type="checkbox"/>	
2. Name of Operator	
Texaco Inc.	
3. Address of Operator	
P. O. Box 3109 Midland, Texas 79702	
4. Location of Well	
UNIT LETTER 0	LOCATED 50 FEET FROM THE South LINE
AND 2549	FEET FROM THE East LINE OF SEC. 31 TWP. 17-S RGE. 35-E N1/4PM
21. Elevations (Show whether DE, RT, etc.)	
3969' GR	
21A. Kind & Status Plug, Bond	
21B. Drilling Contractor	
22. Approx. Date Work will start	
11-25-77	

PROPOSED CASING AND CEMENT PROGRAM

SIZE OF HOLE	SIZE OF CASING	WEIGHT PER FOOT	SETTING DEPTH	SACKS OF CEMENT	EST. TOP
11"	8 5/8"	24#K-55 STC	350'	200 sx	Circulate
7 7/8"	4 1/2"	10.5#K-55STC	4800'	2800 sx	Circulate

Surface Casing: 200 sx class "C" w/2% Cacl, 14.8#/gal < 300% to circulate- cement must circulate.

Production Casing: Cement first stage w/250 sx Halliburton Lite w/5#/sx Gilsonite & 8#/sx salt followed by 500 sx class "C" cement with 8#/sx salt & 1/2% CFR-2: open DV tool @ 2500' circulate 4-6 hrs. Second stage 1800 sx Halliburton Lite w/18% salt + 250 sx class "C" cement w/18% salt.

IN ABOVE SPACE DESCRIBE PROPOSED PROGRAM; IF PROPOSAL IS TO DEEPEN OR PLUG BACK, GIVE DATA ON PRESENT PRODUCTIVE ZONE AND PROPOSED NEW PRODUCTIVE ZONE. GIVE BLOWOUT PREVENTER PROGRAM, IF ANY.

I hereby certify that the information above is true and complete to the best of my knowledge and belief.

Signed [Signature] Title Assistant Div. Petr. Engr. Date 11-10-77

(This space for State Use)

APPROVED BY [Signature] TITLE SUPERVISOR DATE JAN 9 1978

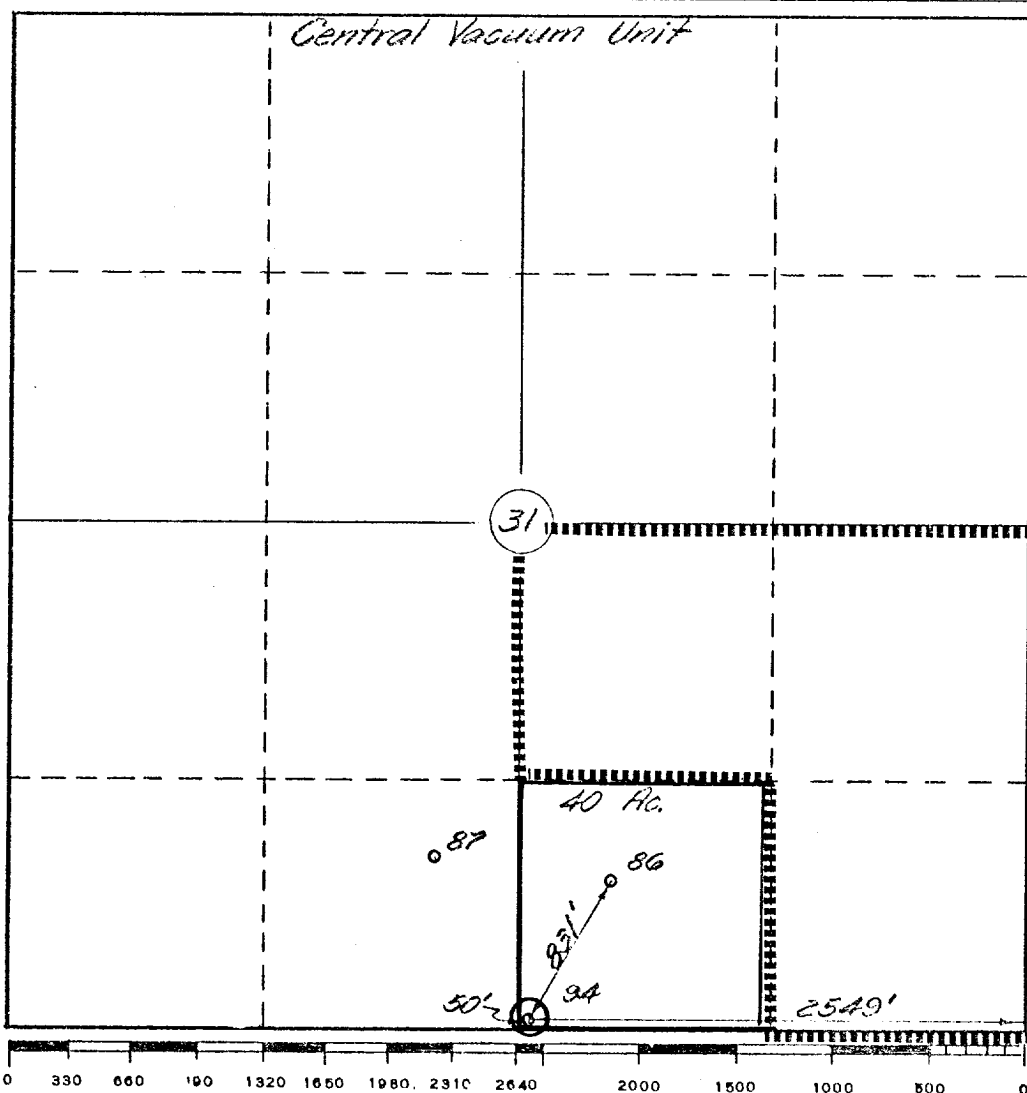
CONDITIONS OF APPROVAL, IF ANY:

Form C-102
Supersedes C-128
Effective 1-1-65

Operator Texaco Inc.		Lease Central Vacuum Unit		Well No. 94
Unit Letter 0	Section 31	Township T-17-S	Range R-35-E	County Lea
Actual Footage Location of Well;				
50 feet from the South line and 2549 feet from the East line Sec. 31				
Ground Level Elev. 3969'	Producing Formation Grayburg San Andres	Pool Vacuum Grayburg-San Andres	Dedicated Acreage; 40 Acres	

- ☐ Yes ☐ No If answer is "yes," type of consolidation _____

No allowable will be assigned to the well until all interests have been consolidated (by communitization, unitization, forced-pooling, or otherwise) or until a non-standard unit, eliminating such interests, has been approved by the Commission.



I hereby certify that the information contained herein is true and complete to the best of my knowledge and belief.

B. L. Evans

Name _____

B. L. Eiland

Position

Division Surveyor

Company

Texaco Inc.

Date _____

11-10-77

I hereby certify that the well location shown on this plat was plotted from field notes of actual surveys made by me or under my supervision, and that the same is true and correct to the best of my knowledge and belief.

Date Surveyed

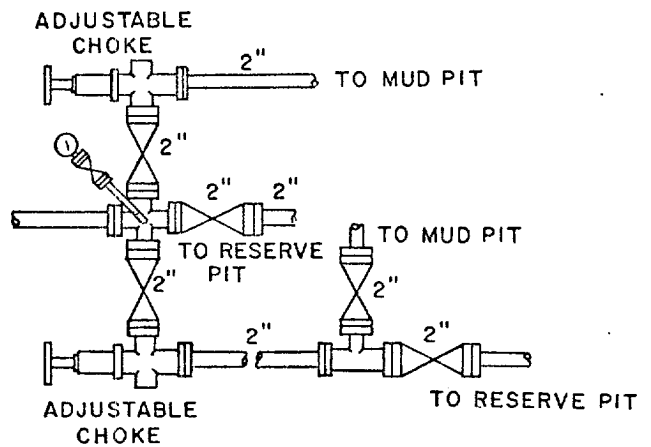
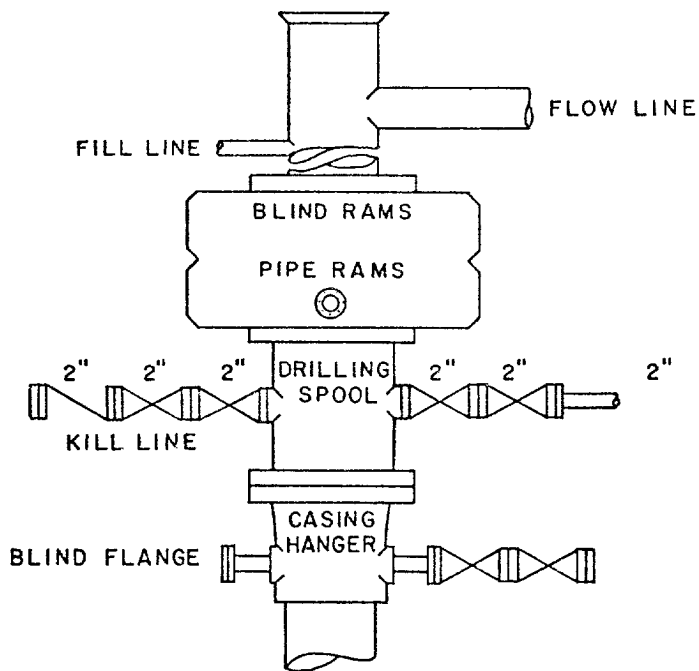
11-9-77

Registered Professional Engineer
and/or Land Surveyor

B. L. Eiland

Certificate No.

4386



SCALE: NONE	DATE	EST. NO.	DRG. NO.
DRAWN BY JWD			
CHECKED BY RDW			
APPROVED BY			



TEXACO, INC.
PRODUCING DEPARTMENT-U.S. (EAST)
MIDLAND, TEXAS



EXHIBIT "B"