

NO. OF COPIES RECEIVED	
DISTRIBUTION	
SANTA FE	
FILE	
U.S.G.S.	
LAND OFFICE	
OPERATOR	

# NEW MEXICO OIL CONSERVATION COMMISSION

Form C-101  
Revised 1-1-65

5A. Indicate Type of Lease	
STATE <input checked="" type="checkbox"/>	FEE <input type="checkbox"/>
5. State Oil & Gas Lease No.	
7. Unit Agreement Name	
8. Farm or Lease Name	
Central Vacuum Unit	
9. Well No.	
14	
10. Field and Pool, or Wildcat	
Vacuum Grayburg-S.A.	
12. County	
Lea	

1a. Type of Work	
b. Type of Well DRILL <input checked="" type="checkbox"/> DEEPEN <input type="checkbox"/> PLUG BACK <input type="checkbox"/>	
OIL WELL <input type="checkbox"/> GAS WELL <input type="checkbox"/> OTHER <input type="checkbox"/> SINGLE ZONE <input type="checkbox"/> MULTIPLE ZONE <input type="checkbox"/>	
2. Name of Operator	
Texaco Inc.	
3. Address of Operator	
P. O. Box 3109 Midland, Texas 79702	
4. Location of Well	
UNIT LETTER E	LOCATED 2630 FEET FROM THE North LINE
AND 1238 FEET FROM THE West LINE OF SEC. 30 TWP. 17-S R. 35-E	
21. Elevations (Show whether DF, RT, etc.)	
3990' GR	
21A. Kind & Status Plug, Bond	
21B. Drilling Contractor	
21C. Proposed Depth	
4800'	
17A. Formation	
Grayburg-S.A.	
20. Rotary or C.T.	
Rotary	
22. Approx. Date Work will start	
1-27-78	

## PROPOSED CASING AND CEMENT PROGRAM

SIZE OF HOLE	SIZE OF CASING	WEIGHT PER FOOT	SETTING DEPTH	SACKS OF CEMENT	EST. TOP
11"	8 5/8"	24#K-55 STC	350'	200 sx	Circulate
7 7/8"	4 1/2"	10.5#K-55STC	4800'	2800 sx	Circulate

Surface Casing: 200 sx class "C" w/2% Cacl, 14.8#/gal < 300% to circulate-cement must circulate.

Production Casing: Cement first stage w/250 sx Halliburton Lite w/5#/sx Gilsonite & 8#/sx salt followed by 500 sx class "C" cement with 8#/sx salt & 1/2% CFR-2; open DV tool @ 2500' circulate 4-6 hrs. Second stage 1800 sx Halliburton Lite w/18% salt + 250 sx class "C" cement w/18% salt.

IN ABOVE SPACE DESCRIBE PROPOSED PROGRAM IF PROPOSAL IS TO DEEPEN OR PLUG BACK, GIVE DATA ON PRESENT PRODUCTIVE ZONE AND PROPOSED NEW PRODUCTIVE ZONE. GIVE BLOWOUT PREVENTER PROGRAM, IF ANY.

I hereby certify that the information above is true and complete to the best of my knowledge and belief.

Signed Dale Holloman Title Assistant Div. Petr. Engr. Date 1-13-78  
Date Holloman

(This space for State Use)

APPROVED BY [Signature] TITLE SUR. DATE FEB 23 1978  
CONDITIONS OF APPROVAL, IF ANY:

RECEIVED

JAN 24 1978

OIL CONSERVATION COMM.  
HOBBS, N. M.

**NEW MEXICO OIL CONSERVATION COMMISSION  
WELL LOCATION AND ACREAGE DEDICATION PLAT**

Form C-102  
Supersedes C-128  
Effective 1-1-65

All distances must be from the outer boundaries of the Section.

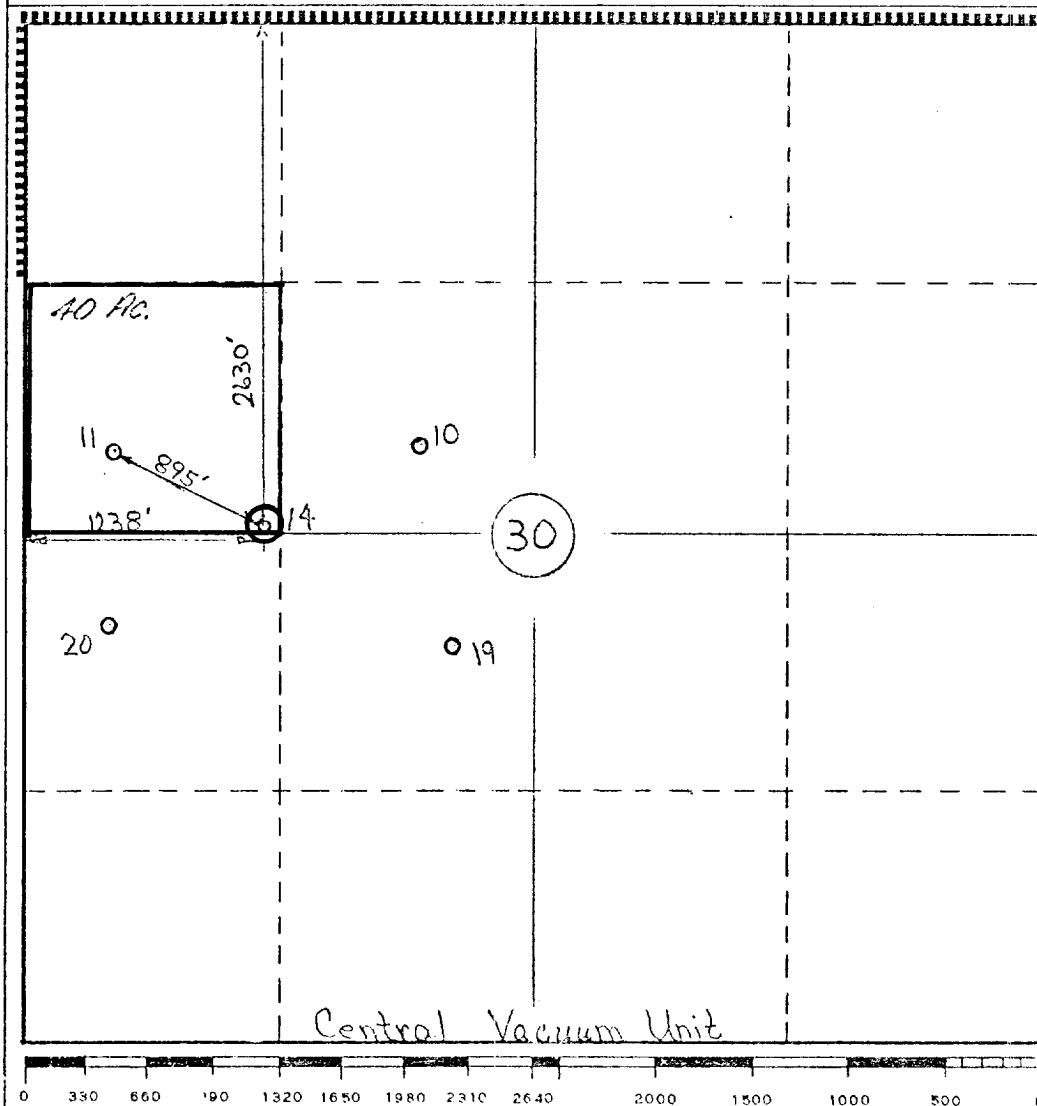
Operator <b>Texaco Inc.</b>		Lease <b>Central Vacuum Unit</b>		Well No. <b>14</b>
Unit Letter <b>E</b>	Section <b>30</b>	Township <b>17-S</b>	Range <b>35-E</b>	County <b>Lea</b>
Actual Footage Location of Well: <b>2630</b> feet from the <b>North</b> line and <b>1238</b> feet from the <b>West</b> line <b>Sec. 30</b>				
Ground Level Elev. <b>3990'</b>	Producing Formation <b>Grayburg-San Andres</b>	Pool <b>Vacuum Grayburg San Andres</b>	Dedicated Acreage: <b>40</b> Acres	

1. Outline the acreage dedicated to the subject well by colored pencil or hachure marks on the plat below.
2. If more than one lease is dedicated to the well, outline each and identify the ownership thereof (both as to working interest and royalty).
3. If more than one lease of different ownership is dedicated to the well, have the interests of all owners been consolidated by communitization, unitization, force-pooling, etc?

☐ Yes    ☐ No    If answer is "yes," type of consolidation \_\_\_\_\_

If answer is "no," list the owners and tract descriptions which have actually been consolidated. (Use reverse side of this form if necessary.) \_\_\_\_\_

No allowable will be assigned to the well until all interests have been consolidated (by communitization, unitization, forced-pooling, or otherwise) or until a non-standard unit, eliminating such interests, has been approved by the Commission.

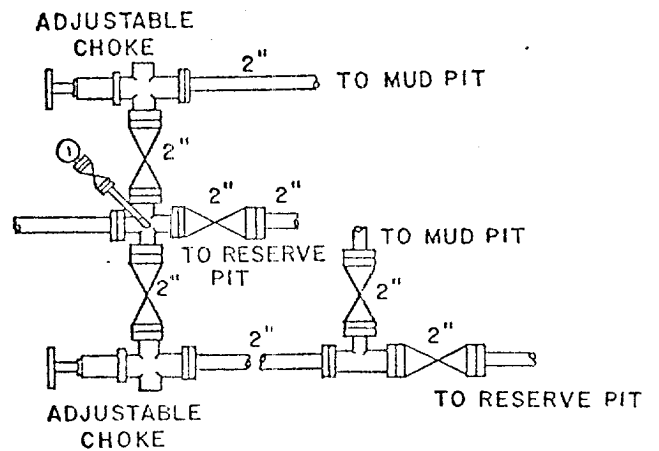
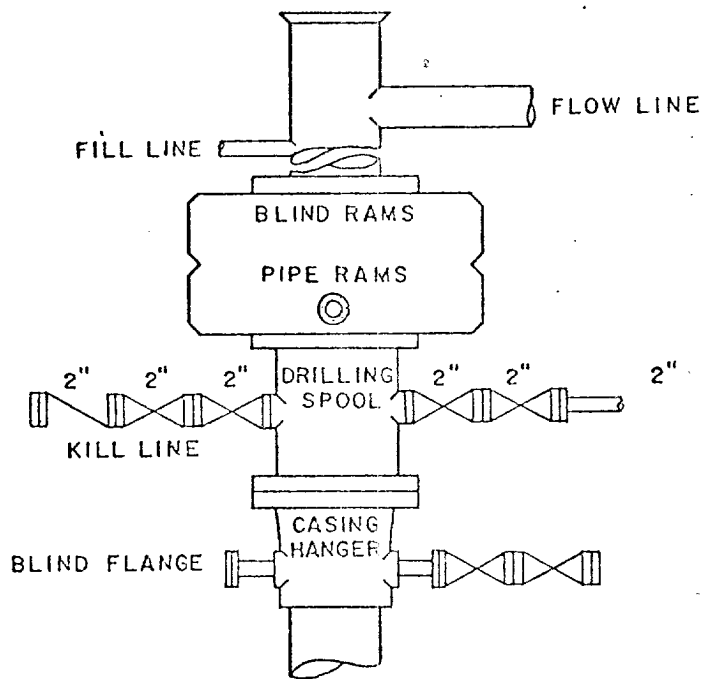


<b>CERTIFICATION</b>	
I hereby certify that the information contained herein is true and complete to the best of my knowledge and belief.	
Name	<b>B. L. Eiland</b>
Position	<b>Division Surveyor</b>
Company	<b>Texaco Inc.</b>
Date	<b>1-13-78</b>
I hereby certify that the well location shown on this plat was plotted from field notes of actual surveys made by me or under my supervision, and that the same is true and correct to the best of my knowledge and belief.	
Date Surveyed	<b>1-9-78</b>
Registered Professional Engineer and/or Land Surveyor	<b>B. L. Eiland</b>
Certificate No.	<b>4386</b>

RECEIVED

JAN 24 1978

OIL CONTROL DIVISION COMM.  
HOBBS, N. M.



SCALE: NONE	DATE	EST. NO.	DRG. NO.
DRAWN BY JWD			
CHECKED BY RDW			
APPROVED BY			



TEXACO, INC.  
PRODUCING DEPARTMENT-U.S. (EAST)  
MIDLAND, TEXAS



EXHIBIT "B"

RECEIVED

JAN 24 1978

OIL CONSERVATION COMM.  
HOBBS, N. M.

173