

NO. OF COPIES RECEIVED	
DISTRIBUTION	
SANTA FE	
FILE	
U.S.G.S.	
LAND OFFICE	
OPERATOR	

NEW MEXICO OIL CONSERVATION COMMISSION

Form C-101
Revised 1-1-65

5A. Indicate Type of Lease STATE <input checked="" type="checkbox"/> FEE <input type="checkbox"/>
5. State Oil & Gas Lease No.
7. Unit Agreement Name
8. Farm or Lease Name Central Vacuum Unit
9. Well No. 46
10. Field and Pool, or Wildcat Vacuum Grayburg-S.A.
11. County Lea
12. Depth of Well 4800'
13A. Locality Grayburg-S.A.
20. Notary or C.T. Rotary
21. Elevations (Show whether DB, RL, etc.) 3976' GR
22. Approx. Date Work will start 1-27-78

APPLICATION FOR PERMIT TO DRILL, DEEPEN, OR PLUG BACK	
1a. Type of Work DRILL <input checked="" type="checkbox"/> DEEPEN <input type="checkbox"/> PLUG BACK <input type="checkbox"/>	
b. Type of Well OIL WELL <input type="checkbox"/> GAS WELL <input type="checkbox"/> OTHER <input type="checkbox"/> SINGLE ZONE <input type="checkbox"/> MULTIPLE ZONE <input type="checkbox"/>	
2. Name of Operator Texaco Inc.	
3. Address of Operator P. O. Box 3109 Midland, Texas	
4. Location of Well UNIT LETTER A LOCATED 119 FEET FROM THE North LINE AND 1224 FEET FROM THE East LINE OF SEC. 31 TWP. 17-S R. 35-E	
21. Elevations (Show whether DB, RL, etc.) 3976' GR	
21A. Kind & Grades (See Form C-101)	
21B. Drilling Contractor	
22. Approx. Date Work will start 1-27-78	

PROPOSED CASING AND CEMENT PROGRAM

SIZE OF HOLE	SIZE OF CASING	WEIGHT PER FOOT	SETTING DEPTH	SACKS OF CEMENT	EST. TOP
11"	8 5/8"	24#K-55 STC	350'	200 sx	Circulate
7 7/8"	4 1/2"	10.5#K-55STC	4800'	2800 sx	Circulate

Surface Casing: 200 sx class "C" w/2% Cacl, 14.8#/gal < 300% to circulate-cement must circulate.

Production Casing: Cement first stage w/250 sx Halliburton Lite w/5#/sx Gilsonite & 8#/sx salt followed by 500 sx class "C" cement with 8#/sx salt & 1/2% CFR-2; open DV tool @ 2500' circulate 4-6 hrs. Second stage 1800 sx Halliburton Lite w/18% salt + 250 sx class "C" cement w/18% salt.

IN ABOVE SPACE DESCRIBE PROPOSED PROGRAM; IF PROPOSAL IS TO DEEPEN OR PLUG BACK, GIVE DATA ON PRESENT PRODUCTIVE ZONE AND PROPOSED NEW PRODUCTIVE ZONE. GIVE BLOWOUT PREVENTER PROGRAM, IF ANY.

I hereby certify that the information above is true and complete to the best of my knowledge and belief.

Signed Dale Holloman

Title Assistant Div. Petr. Engr. Date 1-13-78

(This space for State Use)

APPROVED BY

CONDITIONS OF APPROVAL, IF ANY:

SUPERVISOR

FEB 23 1978

RECEIVED

JAN 24 1978

OIL CONSERVATION COMM.
HOBBS, N. M.

NEW MEXICO OIL CONSERVATION COMMISSION
WELL LOCATION AND ACREAGE DEDICATION PL

Form C-102
Supersedes C-128
Effective 1-1-65

All distances must be from the outer boundaries of the Section.

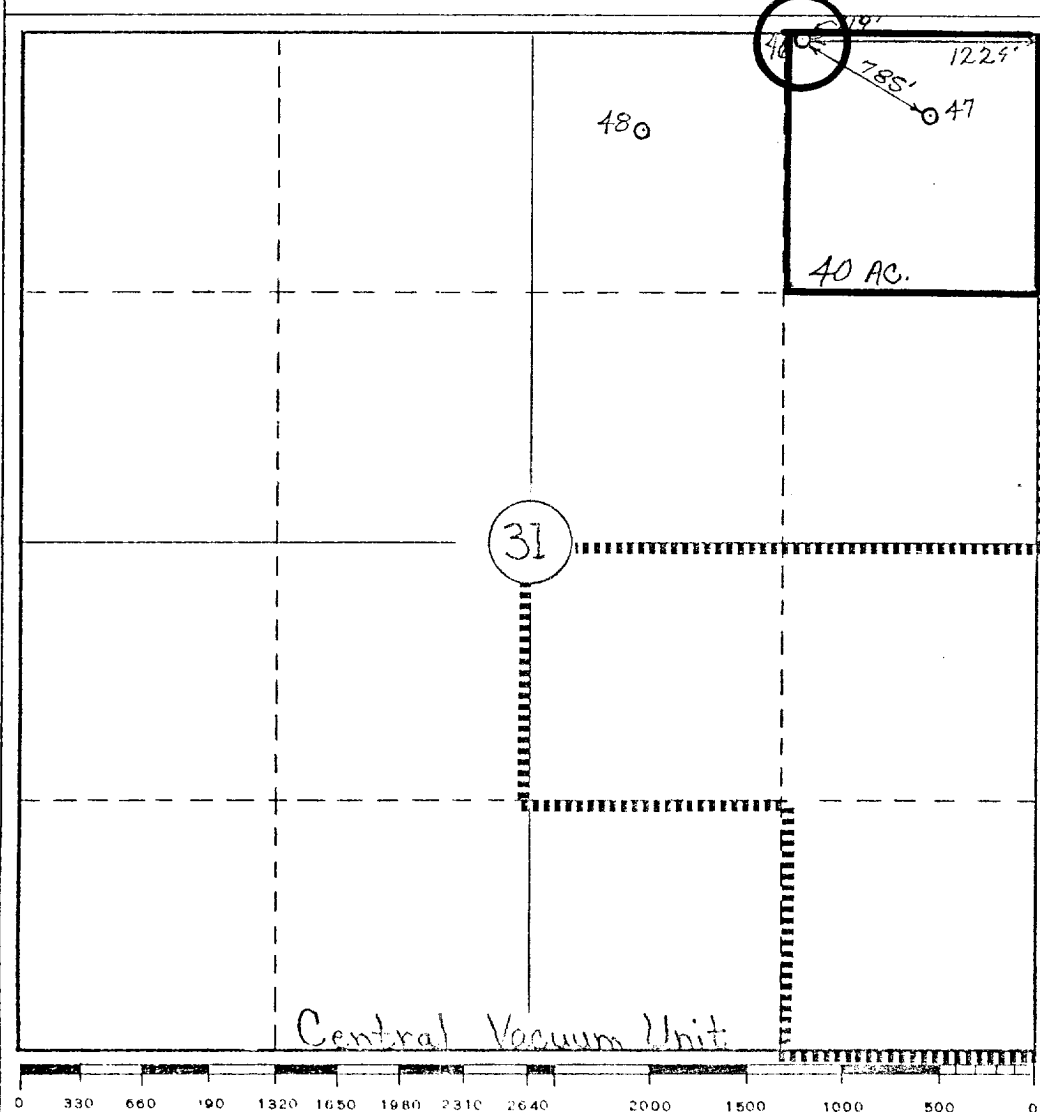
Operator Texaco Inc.			Lease Central Vacuum Unit		Well No. 46
Unit Letter A	Section 31	Township 17-S	Range 35-E	County Lea	
Actual Footage Location of Well: 119 feet from the North line and 1224 feet from the East line Sec. 31					
Ground Level Elev. 3976'	Producing Formation Grayburg-San Andres		Pool Vacuum Grayburg San Andres		Dedicated Acreage: 40 Acres

1. Outline the acreage dedicated to the subject well by colored pencil or hatchure marks on the plat below.
2. If more than one lease is dedicated to the well, outline each and identify the ownership thereof (both as to working interest and royalty).
3. If more than one lease of different ownership is dedicated to the well, have the interests of all owners been consolidated by communitization, unitization, force-pooling, etc?

☐ Yes ☐ No If answer is "yes," type of consolidation _____

If answer is "no," list the owners and tract descriptions which have actually been consolidated. (Use reverse side of this form if necessary.) _____

No allowable will be assigned to the well until all interests have been consolidated (by communitization, unitization, forced-pooling, or otherwise) or until a non-standard unit, eliminating such interests, has been approved by the Commission.



CERTIFICATION

I hereby certify that the information contained herein is true and complete to the best of my knowledge and belief.

B. L. Eiland

Name

B. L. Eiland

Position

Division Surveyor

Company

Texaco Inc.

Date

1-13-78

I hereby certify that the well location shown on this plat was plotted from field notes of actual surveys made by me or under my supervision, and that the same is true and correct to the best of my knowledge and belief.

Date Surveyed

1-9-78

Registered Professional Engineer and/or Land Surveyor

B. L. Eiland
B. L. Eiland

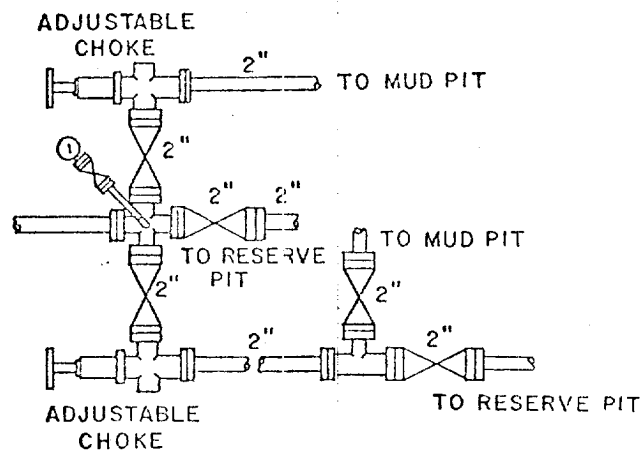
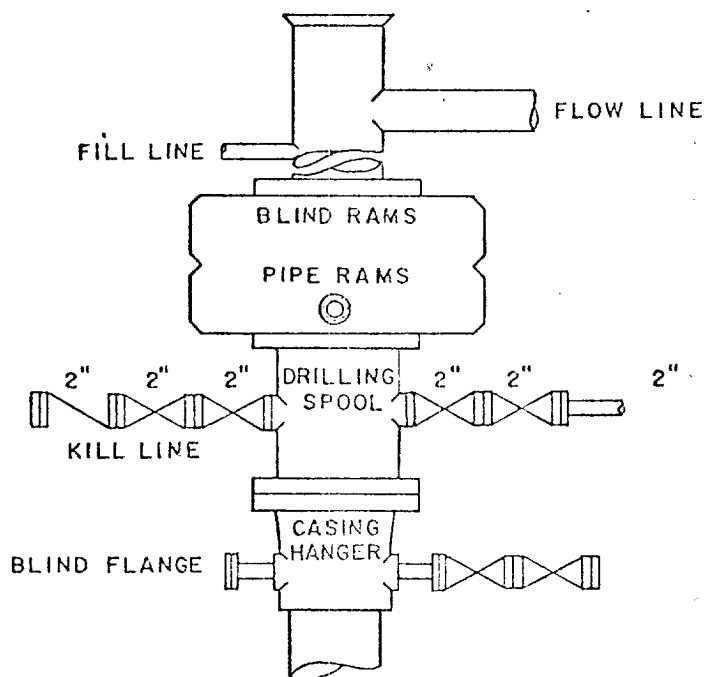
Certificate No.

4386

RECEIVED

JAN 24 1978

OIL CONSERVATION COMM,
HOBBS, N. M.



TEXACO, INC.
PRODUCING DEPARTMENT-U.S. (EAST)
MIDLAND, TEXAS



SCALE: NONE	DATE	EST. NO.	DRG. NO.
DRAWN BY JWD			
CHECKED BY RDW			
APPROVED BY			

EXHIBIT "B"

RECEIVED

JAN 24 1978

OIL CONSERVATION COMM.
HOBBS, N. M.