

State of New Mexico
Energy, Minerals & Natural Resource

Form C-101
Revised March 17, 1999

District I
1625 N. French Dr., Hobbs, NM 88240
District II
811 S. 1st Street, Artesia, NM 88210
District III
1000 Rio Brazos Rd., Aztec, NM 87410
District IV
2040 South Pacheco, Santa Fe, NM 87505

Oil Conservation Division
2040 South Pacheco
Santa Fe, NM 87505

Submit to appropriate District Office
State Lease - 6 Copies
Fee Lease - 5 Copies

☐ AMENDED REPORT

APPLICATION FOR PERMIT TO DRILL, RE-ENTER, DEEPEN, PLUGBACK, OR ADD A ZONE

¹ Operator Name and Address Phillips Petroleum Company 4001 Penbrook Street Odessa, TX 79762		² OGRID Number 017643
		³ API Number 30- 025-26225
⁴ Property Code 9166	⁵ Property Name VACUUM GB/SA UNIT EAST TRACT 2801	⁶ Well No. 002

⁷ Surface Location

UL or lot no.	Section	Township	Range	Lot. Idn	Feet from the	North/South Line	Feet from the	East/West line	County
M	28	17S	35E		1140	SOUTH	1310	WEST	LEA

⁸ Proposed Bottom Hole Location If Different From Surface

UL or lot no.	Section	Township	Range	Lot. Idn	Feet from the	North/South Line	Feet from the	East/West line	County
J	28	17S	35E		2521	SOUTH	2257	EAST	LEA

⁹ Proposed Pool 1

VACUUM GRAYBURG/SAN ANDRES

¹⁰ Proposed Pool 2

¹¹ Work Type Code P	¹² Well Type Code O	¹³ Cable/Rotary R	¹⁴ Lease Type Code S	¹⁵ Ground Level Elevation 3964' RKB / 3954' GL
¹⁶ Multiple	¹⁷ Proposed Depth 6610' MD/4500' TVD	¹⁸ Formation SAN ANDRES	¹⁹ Contractor POOL WELL SERVICE	²⁰ Spud Date UPON APPROVAL

²¹ Proposed Casing and Cement Program

Hole Size	Casing Size	Casing weight/foot	Setting Depth	Sacks of Cement	Estimated TOC
17-1/2"	13-3/8"	48#	366'	675	SURFACE
8-3/4"	7"	23#	4900'	1846	SURFACE

²² Describe the proposed program. If this application is to DEEPEN or PLUG BACK, give the data on the present productive zone and proposed new productive zone. Describe the blowout prevention program, if any. Use additional sheets if necessary.

K.O.P. @ 4276'
DRILL A 2200' 6-1/8" LATERAL TO 6610' MD.

Permit Expires 1 Year From Approval
Date Unless Drilling Underway
Plug-Back

²³ I hereby certify that the information given above is true and complete to the best of my knowledge and belief.		OIL CONSERVATION DIVISION	
Signature: <i>Mary Kitzinger L. M. Sanders</i>		Approved by: PAUL F. KAUTZ	
Printed name: L. M. Sanders		Title: PETROLEUM ENGINEER	
Title: Supervisor, Regulation/Proration		Approval Date: MAR 22 2002	Expiration Date:
Date: 3-01-02	Phone: (915) 368-1488	Conditions of Approval:	
		Attached <input type="checkbox"/>	

District I
1625 N. French Dr., Hobbs, NM 88240
District II
811 S. 1st Street, Artesia, NM 88210
District III
1000 Rio Brazos Rd., Aztec, NM 87410
District IV
2040 South Pacheco, Santa Fe, NM 87505

State of New Mexico
Energy, Minerals & Natural Resources

Form C-102
Revised March 17, 1999

OIL CONSERVATION DIVISION
2040 South Pacheco
Santa Fe, NM 87505

Submit to Appropriate District Office
State Lease - 4 Copies
Fee Lease - 3 Copies

☐ AMENDED REPORT

WELL LOCATION AND ACREAGE DEDICATION PLAT

¹ API Number 30-025-26225	² Pool Code 62180	³ Pool Name VACUUM GRAYBURG SAN ANDRES
⁴ Property Code 9166	⁵ Property Name VACUUM GB/SA UNIT TRACT 2801	⁶ Well Number 002
⁷ OGRID No. 017643	⁸ Operator Name Phillips Petroleum Company	⁹ Elevation 3964' RKB/3954' GL

¹⁰ Surface Location

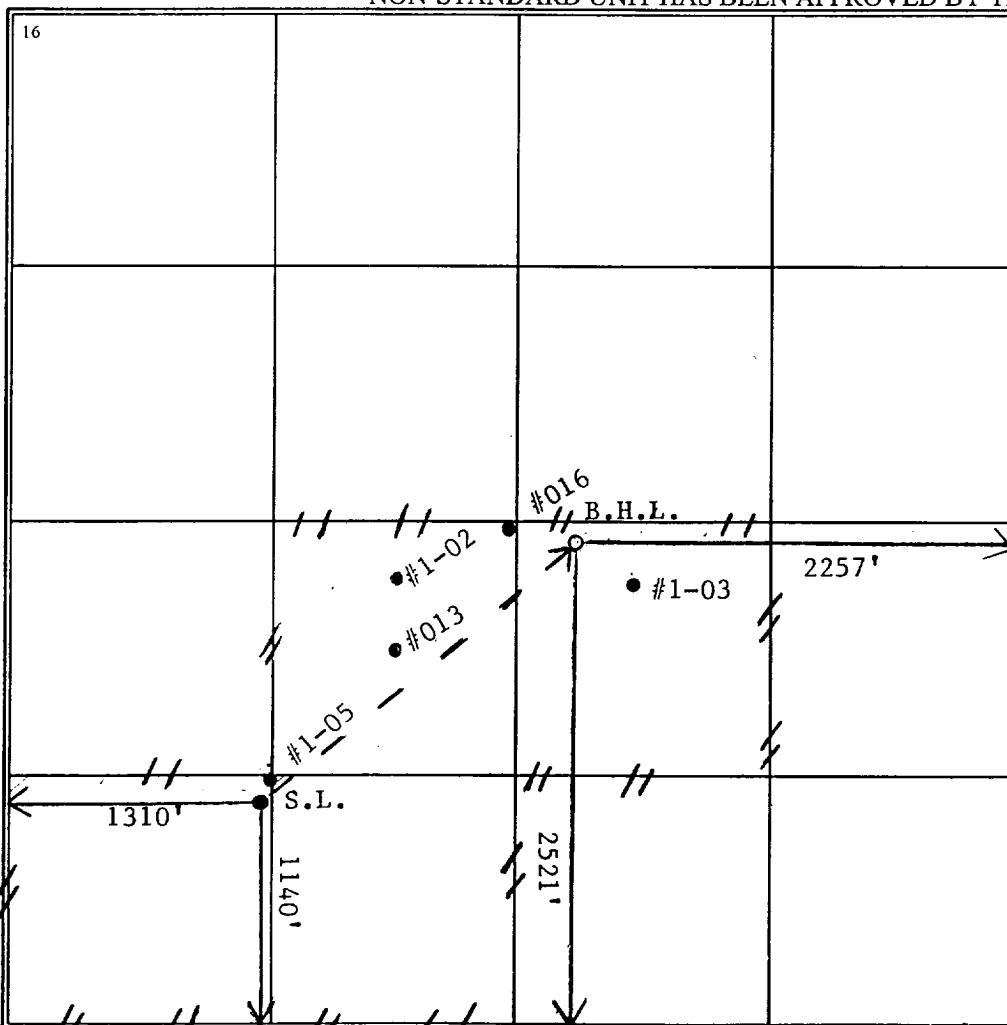
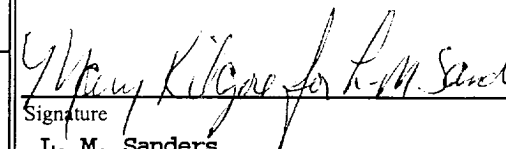
UL or lot no. M	Section 28	Township 17S	Range 35E	Lot. Idn	Feet from the 1140	North/South line SOUTH	Feet from the 1310	East/West line WEST	County LEA
---------------------------	----------------------	------------------------	---------------------	----------	------------------------------	----------------------------------	------------------------------	-------------------------------	----------------------

¹¹ Bottom Hole Location If Different From Surface

UL or lot no. J	Section 28	Township 17S	Range 35E	Lot. Idn	Feet from the 2521	North/South line SOUTH	Feet from the 2257	East/West line EAST	County LEA
---------------------------	----------------------	------------------------	---------------------	----------	------------------------------	----------------------------------	------------------------------	-------------------------------	----------------------

¹² Dedicated Acres 160	¹³ Joint or Infill	¹⁴ Consolidation Code	¹⁵ Order No.
---	-------------------------------	----------------------------------	-------------------------

NO ALLOWABLE WILL BE ASSIGNED TO THIS COMPLETION UNTIL ALL INTERESTS HAVE BEEN CONSOLIDATED OR A NON-STANDARD UNIT HAS BEEN APPROVED BY THE DIVISION

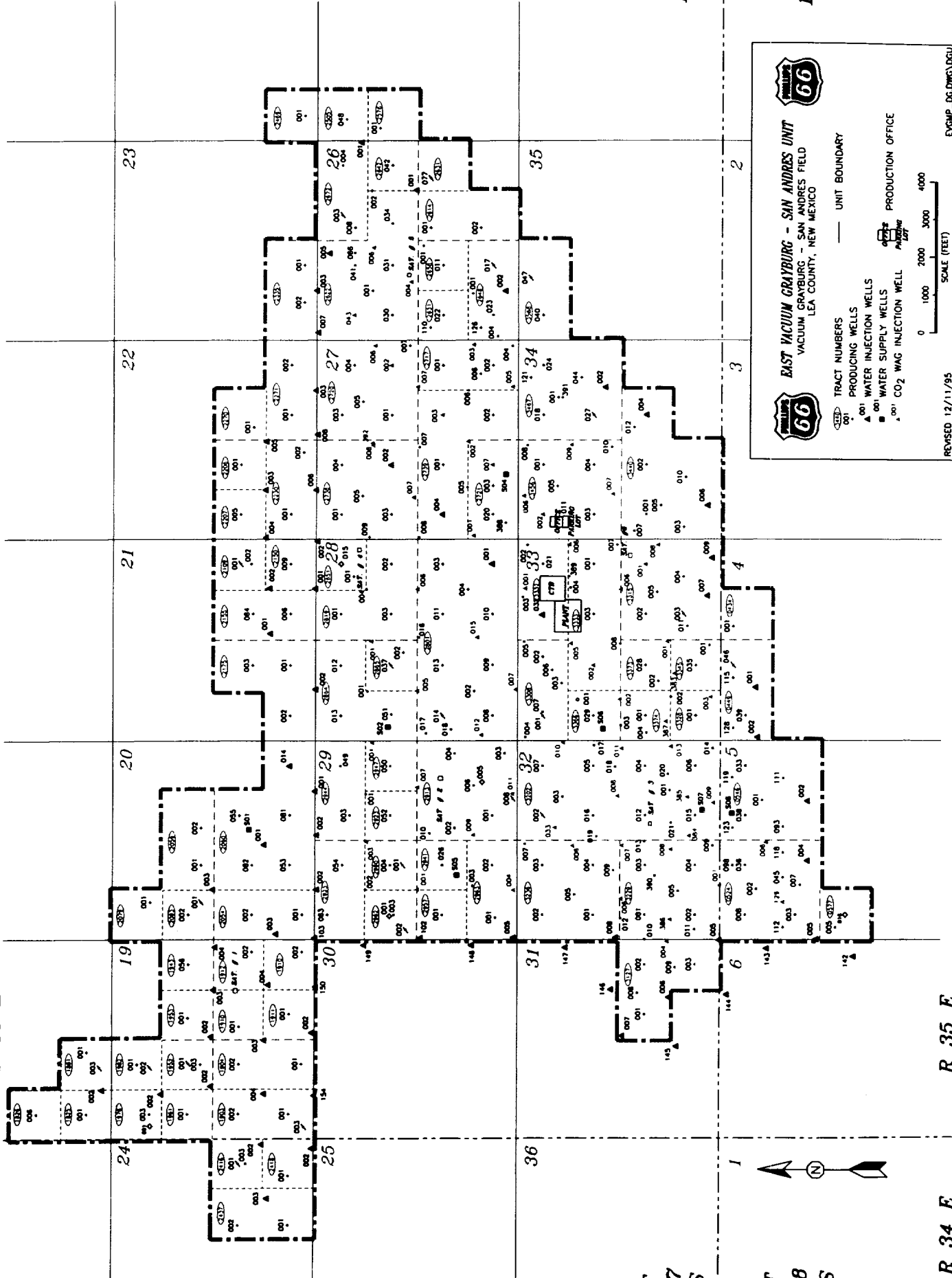
¹⁶ 	¹⁷ OPERATOR CERTIFICATION I hereby certify that the information contained herein is true and complete to the best of my knowledge and belief.  Signature L. M. Sanders Printed Name Supervisor, Regulation/Proration Title 2-27-02 Date
	¹⁸ SURVEYOR CERTIFICATION I hereby certify that the well location shown on this plat was plotted from field notes of actual surveys made by me or under my supervision, and that the same is true and correct to the best of my belief. 1-05-79 Date of Survey Signature and Seal of Professional Surveyer: Original location survey by John West Engineering dated 1-05-79 Certificate Number

R 34 E

R 35 E

R 34 E

R 35 E



EAST VACUUM GRAYBURG - SAN ANDRES UNIT
VACUUM GRAYBURG - SAN ANDRES FIELD
LEA COUNTY, NEW MEXICO

- TRACT NUMBERS
001
002
003
004
005
006
007
008
009
010
011
012
013
014
015
016
017
018
019
020
021
022
023
024
025
026
027
028
029
030
031
032
033
034
035
036
037
038
039
040
041
042
043
044
045
046
047
048
049
050
051
052
053
054
055
056
057
058
059
060
061
062
063
064
065
066
067
068
069
070
071
072
073
074
075
076
077
078
079
080
081
082
083
084
085
086
087
088
089
090
091
092
093
094
095
096
097
098
099
100
101
102
103
104
105
106
107
108
109
110
111
112
113
114
115
116
117
118
119
120
121
122
123
124
125
126
127
128
129
130
131
132
133
134
135
136
137
138
139
140
141
142
143
144
145
146
147
148
149
150
- PRODUCING WELLS
001
002
003
004
005
006
007
008
009
010
011
012
013
014
015
016
017
018
019
020
021
022
023
024
025
026
027
028
029
030
031
032
033
034
035
036
037
038
039
040
041
042
043
044
045
046
047
048
049
050
051
052
053
054
055
056
057
058
059
060
061
062
063
064
065
066
067
068
069
070
071
072
073
074
075
076
077
078
079
080
081
082
083
084
085
086
087
088
089
090
091
092
093
094
095
096
097
098
099
100
101
102
103
104
105
106
107
108
109
110
111
112
113
114
115
116
117
118
119
120
121
122
123
124
125
126
127
128
129
130
131
132
133
134
135
136
137
138
139
140
141
142
143
144
145
146
147
148
149
150
- WATER INJECTION WELLS
001
002
003
004
005
006
007
008
009
010
011
012
013
014
015
016
017
018
019
020
021
022
023
024
025
026
027
028
029
030
031
032
033
034
035
036
037
038
039
040
041
042
043
044
045
046
047
048
049
050
051
052
053
054
055
056
057
058
059
060
061
062
063
064
065
066
067
068
069
070
071
072
073
074
075
076
077
078
079
080
081
082
083
084
085
086
087
088
089
090
091
092
093
094
095
096
097
098
099
100
101
102
103
104
105
106
107
108
109
110
111
112
113
114
115
116
117
118
119
120
121
122
123
124
125
126
127
128
129
130
131
132
133
134
135
136
137
138
139
140
141
142
143
144
145
146
147
148
149
150
- CO2 WAG INJECTION WELL
001

UNIT BOUNDARY

PRODUCTION OFFICE

0 1000 2000 3000 4000

SCALE (FEET)

REVISED 12/11/95

EXCHG-06.DWG(DCU)