

30-025-26379

NO. OF COPIES RECEIVED	
DISTRIBUTION	
SANTA FE	
FILE	
U.S.G.S.	
LAND OFFICE	
OPERATOR	

NEW MEXICO OIL CONSERVATION COMMISSION

Form O-101
Revised 1-1-65

5A. Indicate Type of Lease	
STATE <input checked="" type="checkbox"/>	FEE <input type="checkbox"/>
5. State H & G Lease No.	
B-1839-1	
6. Unit Agreement Name	
East Vacuum Grayburg/ San Andres Unit	
8. Name of Leaseholder	
East Vacuum Grayburg/ San Andres Unit, Tract	
9. Well No.	2738
005	
Vacuum Grayburg/San Andres	
11. County	
Lea	

APPLICATION FOR PERMIT TO DRILL, DEEPEN, OR PLUG BACK

a. Type of Work

b. Type of Well DRILL ☒ DEEPEN ☐ PLUG BACK ☐

c. Well Purpose

d. Address of Operator

Room 401, 4001 Penbrook, Odessa, Texas 79762

4. Location of Well

UNIT LETTER D LOCATED 1215 FEET FROM THE North LINE

AND 1150 FEET FROM THE West LINE OF SEC. 27 TWP. 17-S RGE. 35-E NMPN

10. Proposed Depth

4900'

19A. Formation

Grayburg/San Andres Rotary

11. Drilling Contractor

Advise later

22. Approx. Date Work will start

Upon approval

PROPOSED CASING AND CEMENT PROGRAM					
SIZE OF HOLE	SIZE OF CASING	WEIGHT PER FOOT	SETTING DEPTH	SACKS OF CEMENT	EST. TOP
17-1/2"	13-3/8"	48#-H-40	350' (675 sx Cl H w/2% CaCl ₂ &) circ to surfac (1/4# Flocele/sx in 1st 150/sx)		
12-1/4" x 7-5/8"	5-1/2"	23#, K-55	4900' (suff. TRLW w/12# salt/sx w/10% DD and 1/4#/sx. Flocele plus 3# Gilsonite/sx followed by 260 sx Cl H cement w/8# salt/sx to circ at surface).		

NOTE: If excessive waterflow is encountered in salt section, 8-5/8", 40#, N80 intermediate casing will be set at approx. 3040' cemented to surface w/cement of quality adequate to control waterflow & protect casing string.

(This well is in the same proration unit as Well No. 001)

*Administrative approval requested as provided by Special Order R-5897, Section 4, Rule 8.
All contiguous proration units are in subject unit; request waiver of waiting period and immediate action.

Use mud additives as Required for Control

BOP: Series 900, 3000# WP, double w/one set pipe rams and one set blind rams.

IN ABOVE SPACE DESCRIBE PROPOSED PROGRAM: IF PROPOSAL IS TO DEEPEN OR PLUG BACK, GIVE DATA ON PRESENT PRODUCTIVE ZONE AND PROPOSED NEW PRODUCTIVE ZONE. GIVE BLOWOUT PREVENTER PROGRAM, IF ANY.

I hereby certify that the information above is true and complete to the best of my knowledge and belief.

Signature W. J. Mueller Title Sr. Engineering Specialist Date July 5, 1979

(This space for State Use)

APPROVED BY [Signature] TITLE SUPERVISOR DISTRICT I DATE JUL 19 1979

CONDITIONS OF APPROVAL, IF ANY:

NEW MEXICO OIL CONSERVATION COMMISSION
WELL LOCATION AND ACREAGE DEDICATION AT

Form C-102
Supersedes C-128
Effective 1-1-65

All distances must be from the outer boundaries of the Section.

Operator PHILLIPS PETROLEUM COMPANY		Lease E.V.G.S.A.U. Jr. 2738		Well No. 2738-005
Unit Letter D	Section 27	Township 17 SOUTH	Range 35 EAST	County LEA
Actual Footage Location of Well: 1215 feet from the NORTH line and 1150 feet from the WEST line				
Ground Level Elev. 3939.7	Producing Formation Grayburg/San Andres	Pool Vacuum Grayburg/San Andres	Dedicated Acreage: 40 Acres	

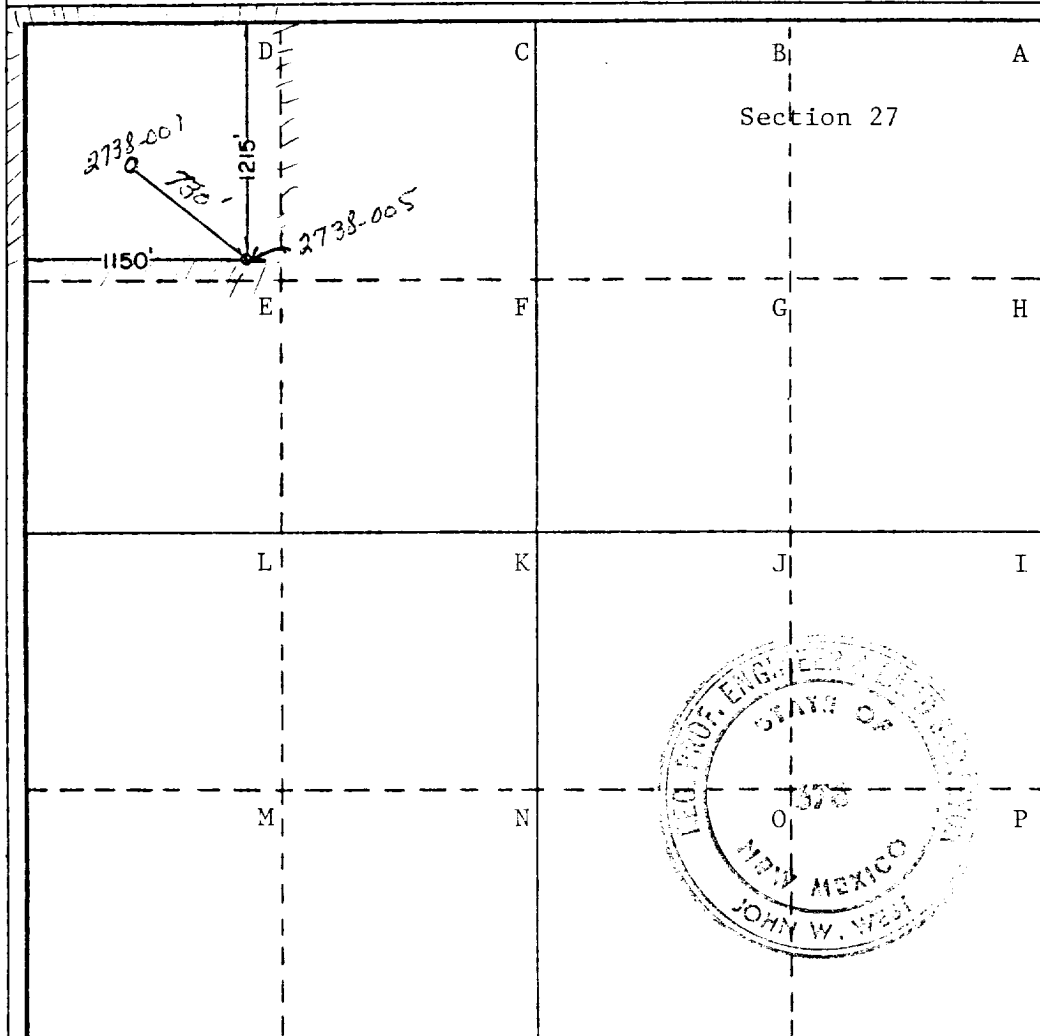
(unprepared)

1. Outline the acreage dedicated to the subject well by colored pencil or hachure marks on the plat below.
2. If more than one lease is dedicated to the well, outline each and identify the ownership thereof (both as to working interest and royalty).
3. If more than one lease of different ownership is dedicated to the well, have the interests of all owners been consolidated by communitization, unitization, force-pooling, etc?

☐ Yes ☐ No If answer is "yes," type of consolidation _____

If answer is "no," list the owners and tract descriptions which have actually been consolidated. (Use reverse side of this form if necessary.) _____

No allowable will be assigned to the well until all interests have been consolidated (by communitization, unitization, forced-pooling, or otherwise) or until a non-standard unit, eliminating such interests, has been approved by the Commission.



CERTIFICATION

I hereby certify that the information contained herein is true and complete to the best of my knowledge and belief.

W. J. Mueller
Name _____
W. J. Mueller

Position
Senior Engineering Specialist

Company
Phillips Petroleum Company

Date
July 5, 1979

I hereby certify that the well location shown on this plat was plotted from field notes of actual surveys made by me or under my supervision, and that the same is true and correct to the best of my knowledge and belief.

Date Surveyed
MAY 30TH, 1979

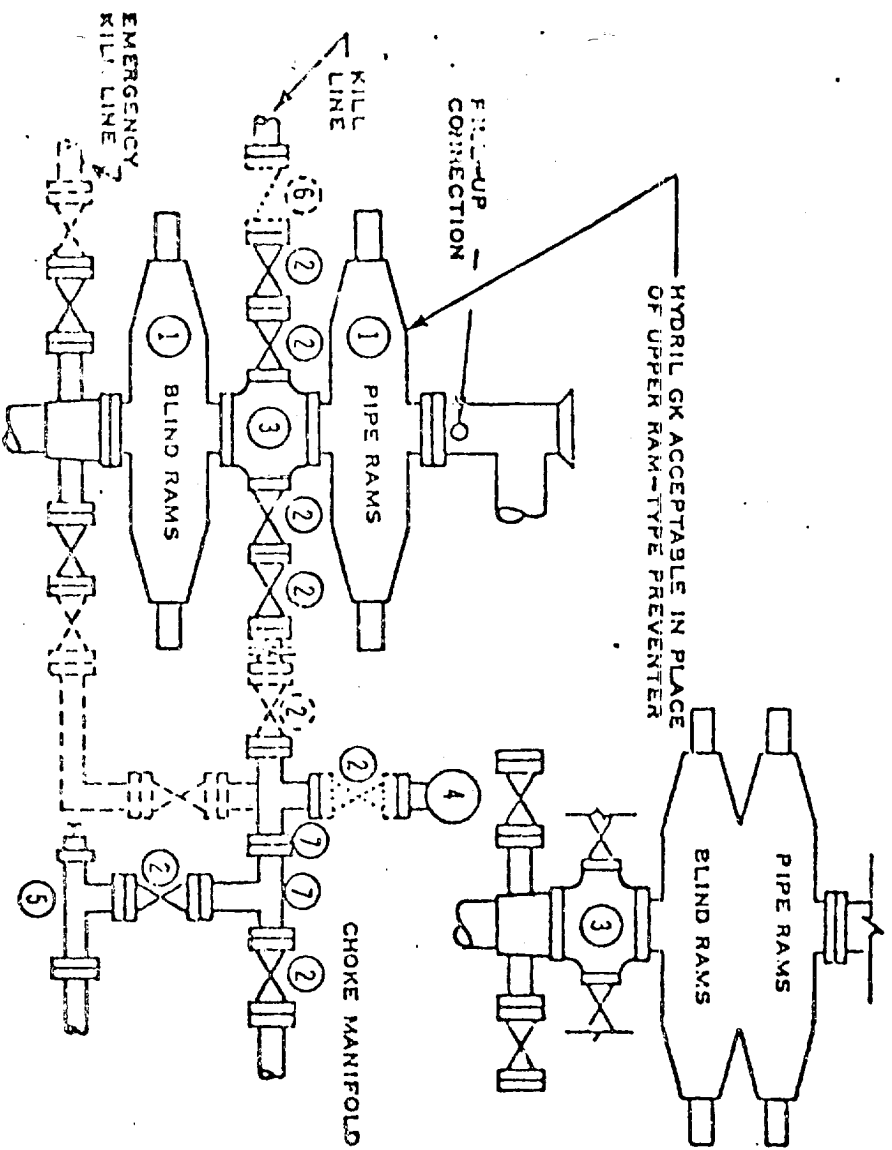
Registered Professional Engineer and/or Land Surveyor

John W. West

Certificate No. John W. West 676
Ronald J. Eidson 3239

0 330 660 990 1320 1650 1980 2310 2640 2970 3300 3630 3960 4290 4620 4950 5280 5610 5940 6270 6600 6930 7260 7590 7920 8250 8580 8910 9240 9570 9900

DOUBLE PREVENTER OPTION



- ① SERIES 900 RAM-TYPE BOP
- ② 2" SERIES 900 VALVE
- ③ SERIES 900 DRILLING SPOOL
- ④ 2" MUD PRESSURE GAUGE
- ⑤ 2" SERIES 900 CHOKE
- ⑥ 2" SERIES 900 CHECK VALVE
- ⑦ 2" SERIES 900 STEEL TEE

NOTES:

1. 3000 PSI WP CLAMP HUBS MAY BE SUBSTITUTED FOR FLANGES
2. VALVES MAY BE EITHER HAND OR POWER OPERATED BUT, IF POWER OPERATED, THE VALVES FLANGED TO THE BOP RUN MUST BE CAPABLE OF BEING OPENED AND CLOSED MANUALLY OR CLOSE ON POWER FAILURE AND BE CAPABLE OF BEING OPENED MANUALLY

..... OPTIONAL EQUIPMENT

PHILLIPS PETROLEUM COMPANY

3000 PSI WORKING PRESSURE
BLOWOUT PREVENTER HOOK-UP
(SERIES 900 FLANGES OR BETTER)

RECEIVED

JUL 10 1973

O.C.D. HOBBS, OFFICE

Garment Bond Log

