



NEW MEXICO OIL CONSERVATION COMMISSION  
WELL LOCATION AND ACREAGE DEDICATION AT

Form C-102  
Supersedes C-128  
Effective 1-1-65

All distances must be from the outer boundaries of the Section.

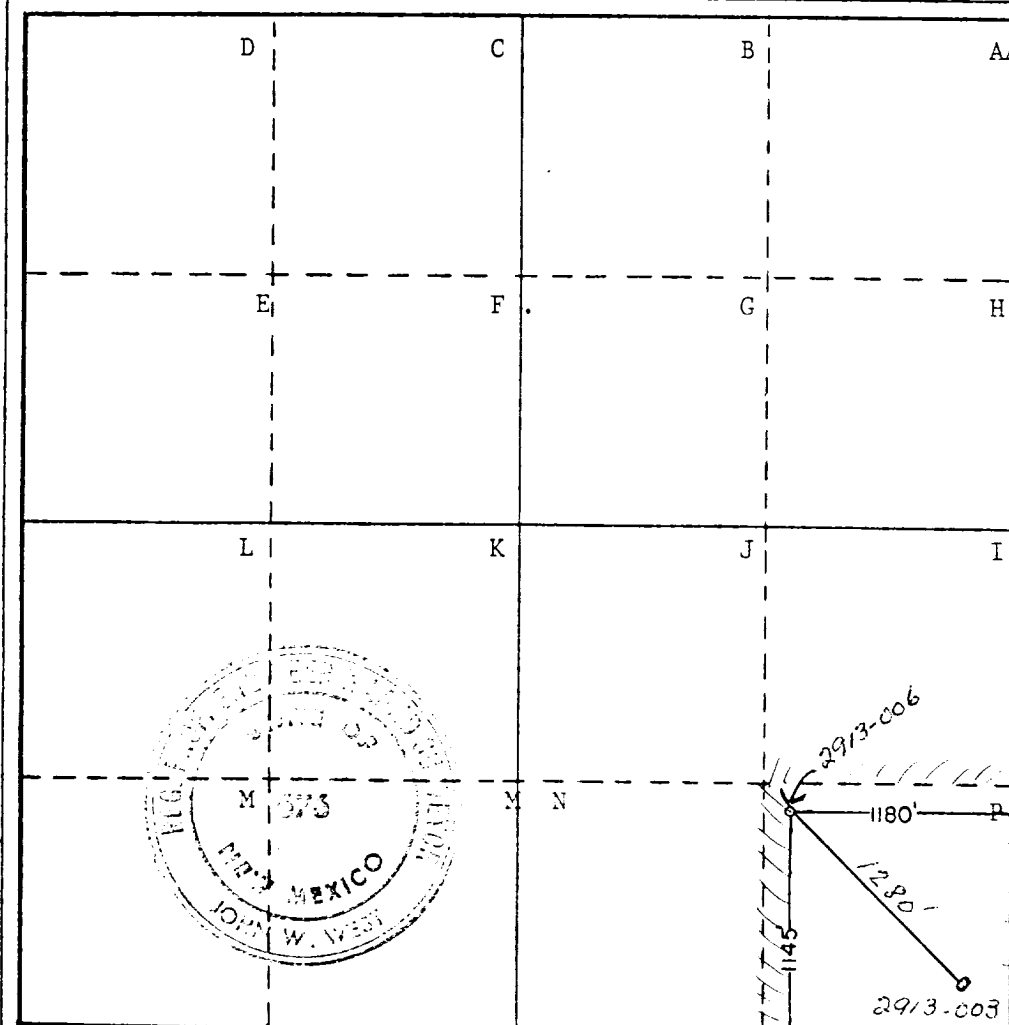
Operator <b>PHILLIPS PETROLEUM COMPANY</b>		Lease <b>E.V.G.S.A.U.</b>		Well No. <b>2913-006</b>	
Unit Letter <b>P</b>	Section <b>29</b>	Township <b>17 SOUTH</b>	Range <b>35 EAST</b>	County <b>LEA</b>	
Actual Footage Location of Well: <b>1180</b> feet from the <b>EAST</b> line and <b>1145</b> feet from the <b>SOUTH</b> line					
Ground Level Elev. <b>3963.7</b>	Producing Formation <b>Grayburg San Andres</b>	Pool <b>Vacuum Gb/San Andres</b>	Dedicated Acreage: <b>40</b> Acres		

1. Outline the acreage dedicated to the subject well by colored pencil or hachure marks on the plat below.
2. If more than one lease is dedicated to the well, outline each and identify the ownership thereof (both as to working interest and royalty).
3. If more than one lease of different ownership is dedicated to the well, have the interests of all owners been consolidated by communitization, unitization, force-pooling, etc?

☐ Yes ☐ No If answer is "yes," type of consolidation \_\_\_\_\_

If answer is "no," list the owners and tract descriptions which have actually been consolidated. (Use reverse side of this form if necessary.) \_\_\_\_\_

No allowable will be assigned to the well until all interests have been consolidated (by communitization, unitization, forced-pooling, or otherwise) or until a non-standard unit, eliminating such interests, has been approved by the Commission.



CERTIFICATION

I hereby certify that the information contained herein is true and complete to the best of my knowledge and belief.

W. J. Mueller  
Position  
Senior Engineering Specialist

Company  
Phillips Petroleum Company  
Date  
July 6, 1979

I hereby certify that the well location shown on this plat was plotted from field notes of actual surveys made by me or under my supervision, and that the same is true and correct to the best of my knowledge and belief.

Date Surveyed  
JUNE 3RD, 1979

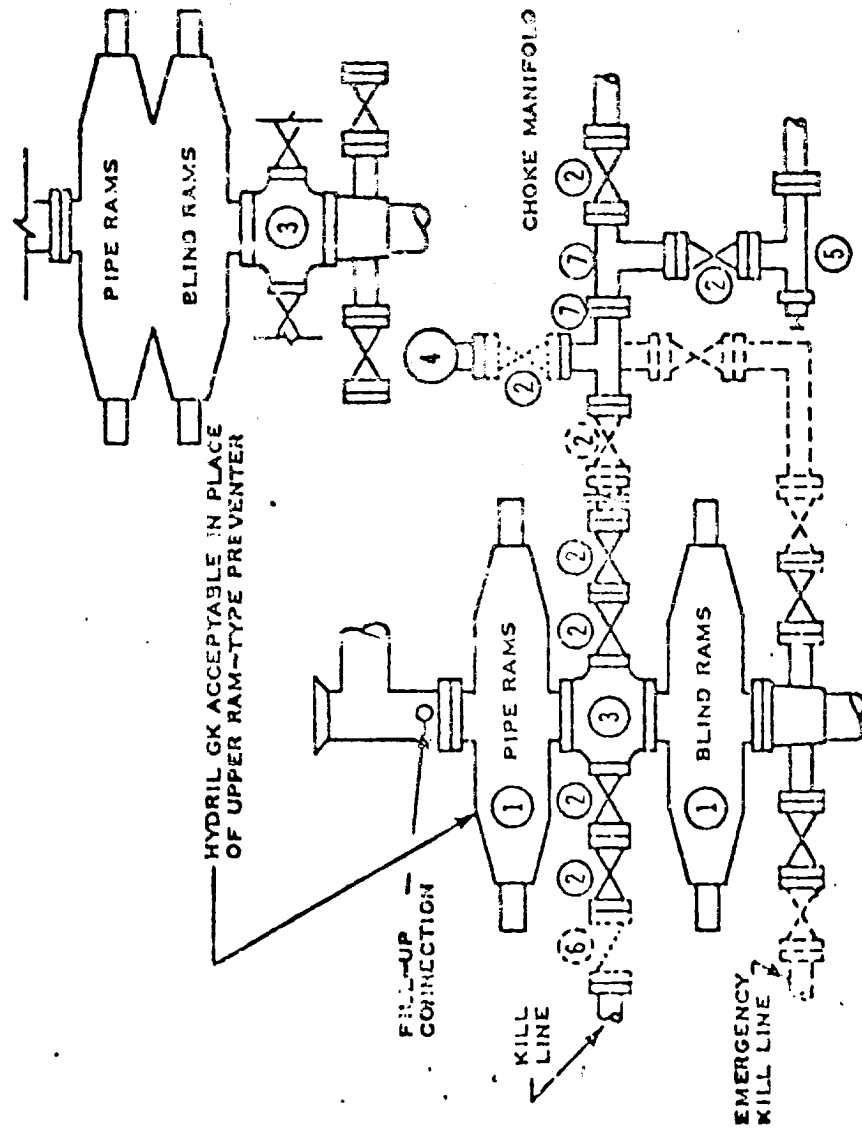
Registered Professional Engineer and/or Land Surveyor

John W. West

Certificate No. John W. West 676  
Ronald J. Eidson 3239

0 330 660 990 1320 1650 1980 2310 2640 2970 3300 3630 3960 4290 4620 4950 5280 5610 5940 6270 6600 6930 7260 7590 7920 8250 8580 8910 9240 9570 9900

# DOUBLE PREVENTER OPTION



- ① SERIES 900 RAM-TYPE BOP
  - ② SERIES 500 VALVE
  - ③ SERIES 900 DRILLING SPOOL
  - ④ 1" ID PRESSURE GAUGE
  - ⑤ SERIES 900 CHOKER
  - ⑥ SERIES 900 CHECK VALVE
  - ⑦ SERIES 900 STEEL YEE
- NOTES:
1. 3000 PSI WP CLAMP FLANGES MAY BE SUBSTITUTED FOR FLANGES
  2. VALVES MAY BE EITHER HAND OR POWER OPERATED BUT, IF POWER OPERATED, THE VALVES FLANGED TO THE BOP RUN MUST BE CAPABLE OF BEING OPENED AND CLOSED MANUALLY OR CLOSE ON POWER FAILURE AND BE CAPABLE OF BEING OPENED MANUALLY

..... OPTIONAL EQUIPMENT

PHILLIPS PETROLEUM COMPANY

3000 PSI WORKING PRESSURE  
BLOWOUT PREVENTER HOOK-UP  
(SERIES 900 FLANGES OR BETTER)

REV 6 / 73

FIGURE NO. 7

RECEIVED JUL 10 1955  
O.C.D. - OBBS, OFFICE  
*Carroll Smith*