

NO. OF COPIES RECEIVED	
DISTRIBUTION	
SANTA FE	
FILE	
U.S.G.S.	
LAND OFFICE	
OPERATOR	

NEW MEXICO OIL CONSERVATION COMMISSION

APPROVAL VALID
FOR 90 DAYS UNLESS
DRILLING COMMENCED,

EXPIRES 10/24/79

Form 2-101
Revised 1-1-66

5A. Lease No. Type of Lease	
STATE <input checked="" type="checkbox"/> NEW MEXICO	FEE <input type="checkbox"/>
B-1399-10	

APPLICATION FOR PERMIT TO DRILL, DEEPEN, OR PLUG BACK

a. Type of work		b. Type of Well		c. Name of Operator		d. Name of Lessee	
DRILL <input checked="" type="checkbox"/> DEEPEN <input type="checkbox"/> PLUG BACK <input type="checkbox"/>		OIL WELL <input checked="" type="checkbox"/> GAS WELL <input type="checkbox"/> OTHER <input type="checkbox"/>		Phillips Petroleum Company		East Vacuum Grayburg/ San Andres Unit	
SINGLE ZONE <input checked="" type="checkbox"/> MULTIPLE ZONE <input type="checkbox"/>		Room 401, 4001 Penbrook, Odessa, Texas 79762		East Vacuum Grayburg/ San Andres Unit, Tract		2913	
UNIT LETTER <u>I</u> LOCATED <u>2630</u> FEET FROM THE <u>South</u> LINE		1230 East 29 17-S 35-E		3967.3' Ground (unprepared) Blanket		Advise later	
4900' Grayburg/San Andres Rotary		3967.3' Ground (unprepared) Blanket		Advise later		Upon approval	

PROPOSED CASING AND CEMENT PROGRAM

SIZE OF HOLE	SIZE OF CASING	WEIGHT PER FOOT	SETTING DEPTH	SACKS OF CEMENT	EST. TOP
17-1/2"	13-3/8"	48#-H-40	350' (675 sx Cl H w/2% CaCl ₂ & circ to surface (1/4# Flocele/sx in 1st 150/sx)		
12-1/4" x 7-5/8"	5-1/2"	23#, K-55	4900' (suff. TRLW w/12# salt/sx w/10% DD and 1/4#/sx. Flocele plus 3# Gilsonite/sx followed by 260 sx Cl H cement w/8# salt/sx to circ at surface).		

NOTE: If excessive waterflow is encountered in salt section, 8-5/8", 40#, N80 intermediate casing will be set at approx. 3040 cemented to surface w/cement of quality adequate to control waterflow & protect casing string.

(This well is in the same proration unit as Well No. 004)

*Administrative approval requested as provided by Special Order R-5897, Section 4, Rule 8. All contiguous proration units are in subject unit; request waiver of waiting period and immediate action.

Use mud additives as Required for Control

BOP: Series 900,3000# WP, double w/one set pipe rams and one set blind rams.

IN ABOVE SPACE DESCRIBE PROPOSED PROGRAM: IF PROPOSAL IS TO DEEPEN OR PLUG BACK, GIVE DATA ON PRESENT PRODUCTIVE ZONE AND PROPOSED NEW PRODUCTIVE ZONE. GIVE BLOCK, PREVENTER PROGRAM, IF ANY.

I hereby certify that the information above is true and complete to the best of my knowledge and belief.

Signed W. J. Mueller Title Sr. Engineering Specialist

Date July 5, 1979

(This space for State Use)

Orig. Signed by
Les Clements

APPROVED BY

TITLE

DATE

CONDITIONS OF APPROVAL

Oil & Gas Insp.

JUL 20 1979

NEW MEXICO OIL CONSERVATION COMMISSION
WELL LOCATION AND ACREAGE DEDICATION

Form C-102
Supersedes C-128
Effective 1-1-65

All distances must be from the outer boundaries of the Section.

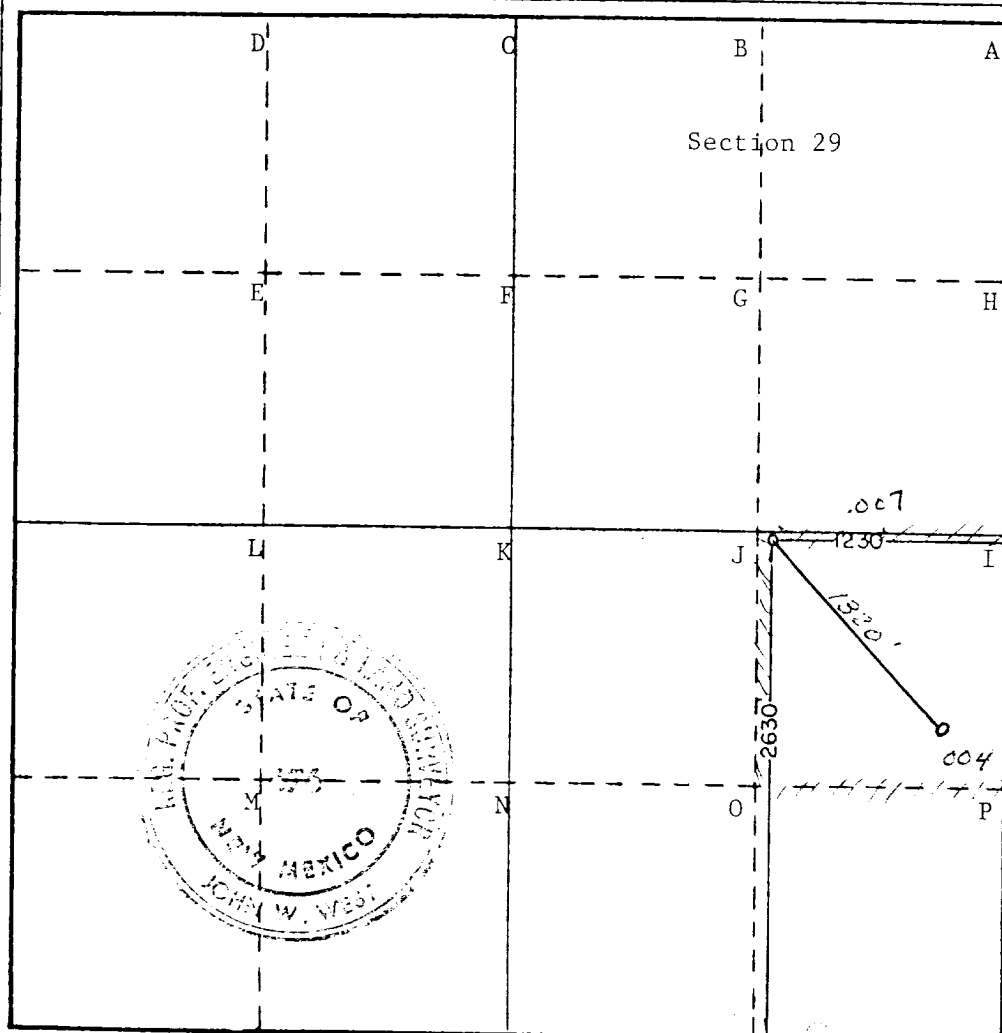
Operator PHILLIPS PETROLEUM COMPANY		Lease E.V.G.S.A.U. TRACT 2913		Well No. -007
Unit Letter 1	Section 29	Township 17 SOUTH	Range 35 EAST	County LEA
Actual Footage Location of Well: 2630 feet from the SOUTH line and 1230 feet from the EAST line				
Ground Level Elev. 3967.3 (unprepared)	Producing Formation Grayburg/San Andres	Pool Vacuum Gb/San Andres	Dedicated Acreage: 40 Acres	

1. Outline the acreage dedicated to the subject well by colored pencil or hachure marks on the plat below.
2. If more than one lease is dedicated to the well, outline each and identify the ownership thereof (both as to working interest and royalty).
3. If more than one lease of different ownership is dedicated to the well, have the interests of all owners been consolidated by communitization, unitization, force-pooling, etc?

☐ Yes ☐ No If answer is "yes," type of consolidation _____

If answer is "no," list the owners and tract descriptions which have actually been consolidated. (Use reverse side of this form if necessary.) _____

No allowable will be assigned to the well until all interests have been consolidated (by communitization, unitization, forced-pooling, or otherwise) or until a non-standard unit, eliminating such interests, has been approved by the Commission.



CERTIFICATION

I hereby certify that the information contained herein is true and complete to the best of my knowledge and belief.

[Signature]
Name

W. J. Mueller

Position

Senior Engineering Specialist

Company

Phillips Petroleum Company

Date

July 5, 1979

I hereby certify that the well location shown on this plat was plotted from field notes of actual surveys made by me or under my supervision, and that the same is true and correct to the best of my knowledge and belief.

Date Surveyed

MAY 30TH, 1979

Registered Professional Engineer and/or Land Surveyor

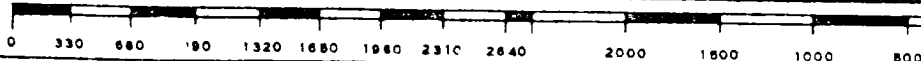
[Signature]

Certificate No. John W. West

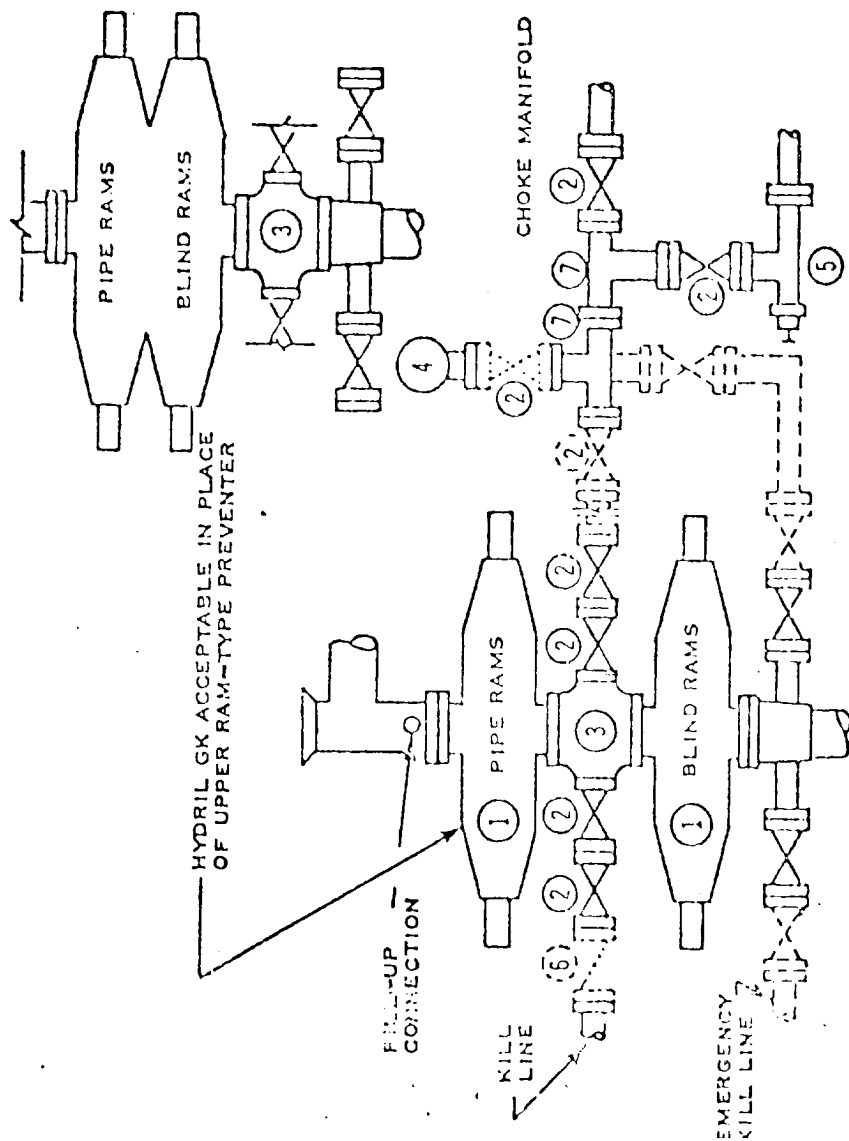
676

Ronald J. Eidson

3239



DOUBLE PREVENTER OPTION



- ① SERIES 900 RAM-TYPE BOP
- ② 2" SERIES 900 VALVE
- ③ SERIES 900 DRILLING SPOOL
- ④ 2" MUD PRESSURE GAUGE
- ⑤ 2" SERIES 900 CHOKE
- ⑥ 2" SERIES 900 CHECK VALVE
- ⑦ 2" SERIES 900 STEEL TEE

NOTES:

1. 3000 PSI WP CLAMP HUGS MAY BE SUBSTITUTED FOR FLANGES
2. VALVES MAY BE EITHER HAND OR POWER OPERATED BUT, IF POWER OPERATED, THE VALVES FLANGED TO THE BOP RUN MUST BE CAPABLE OF BEING OPENED AND CLOSED MANUALLY OR CLOSE ON POWER FAILURE AND BE CAPABLE OF BEING OPENED MANUALLY

..... OPTIONAL EQUIPMENT

PHILLIPS PETROLEUM COMPANY

3000 PSI WORKING PRESSURE
BLOWOUT PREVENTER HOOK-UP
(SERIES 900 FLANGES OR BETTER)

REV 6/73

FIGURE NO. 7

RECEIVED
JUL 18 1973
O.C.D. HOBBS. OFFICE

Commander Hobbs
FILE