



NEW MEXICO OIL CONSERVATION COMMISSION  
WELL LOCATION AND ACREAGE DEDICATION PLAT

Form C-102  
Supersedes C-128  
Effective 1-1-65

All distances must be from the outer boundaries of the Section.

Operator <b>PHILLIPS PETROLEUM COMPANY</b>		Lease <b>E.V.G.S.A.U.</b>		TRACT <b>2963</b>	Well No. <b>-004</b>
Unit Letter <b>M</b>	Section <b>29</b>	Township <b>17 SOUTH</b>	Range <b>35 EAST</b>	County <b>LEA</b>	

Actual Footage Location of Well:

**1310** feet from the **WEST** line and **100** feet from the **SOUTH** line

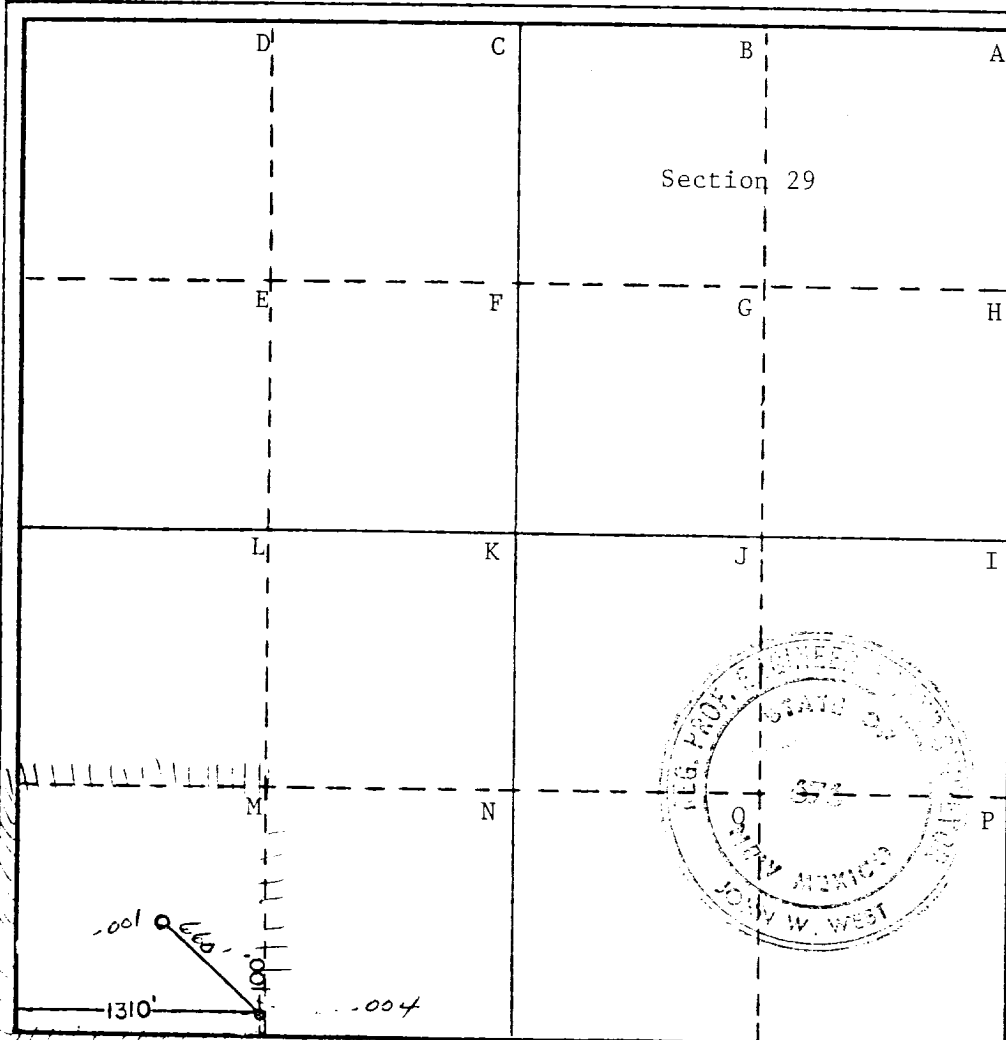
Ground Level Elev. <b>3970.5</b> (unprepared)	Producing Formation <b>Grayburg/San Andres</b>	Pool <b>Vacuum Gb/San Andres</b>	Dedicated Acreage: <b>40</b> Acres
---	---	-------------------------------------	---------------------------------------

1. Outline the acreage dedicated to the subject well by colored pencil or hachure marks on the plat below.
2. If more than one lease is dedicated to the well, outline each and identify the ownership thereof (both as to working interest and royalty).
3. If more than one lease of different ownership is dedicated to the well, have the interests of all owners been consolidated by communitization, unitization, force-pooling, etc?

☐ Yes ☐ No If answer is "yes," type of consolidation \_\_\_\_\_

If answer is "no," list the owners and tract descriptions which have actually been consolidated. (Use reverse side of this form if necessary.) \_\_\_\_\_

No allowable will be assigned to the well until all interests have been consolidated (by communitization, unitization, forced-pooling, or otherwise) or until a non-standard unit, eliminating such interests, has been approved by the Commission.



CERTIFICATION

I hereby certify that the information contained herein is true and complete to the best of my knowledge and belief.

*W. J. Mueller*  
Name

W. J. Mueller  
Position

Senior Engineering Specialist

Company

Phillips Petroleum Company

Date

July 5, 1979

I hereby certify that the well location shown on this plat was plotted from field notes of actual surveys made by me or under my supervision, and that the same is true and correct to the best of my knowledge and belief.

Date Surveyed

JUNE 4TH, 1979

Registered Professional Engineer and/or Land Surveyor

*John W. West*  
Certificate No.

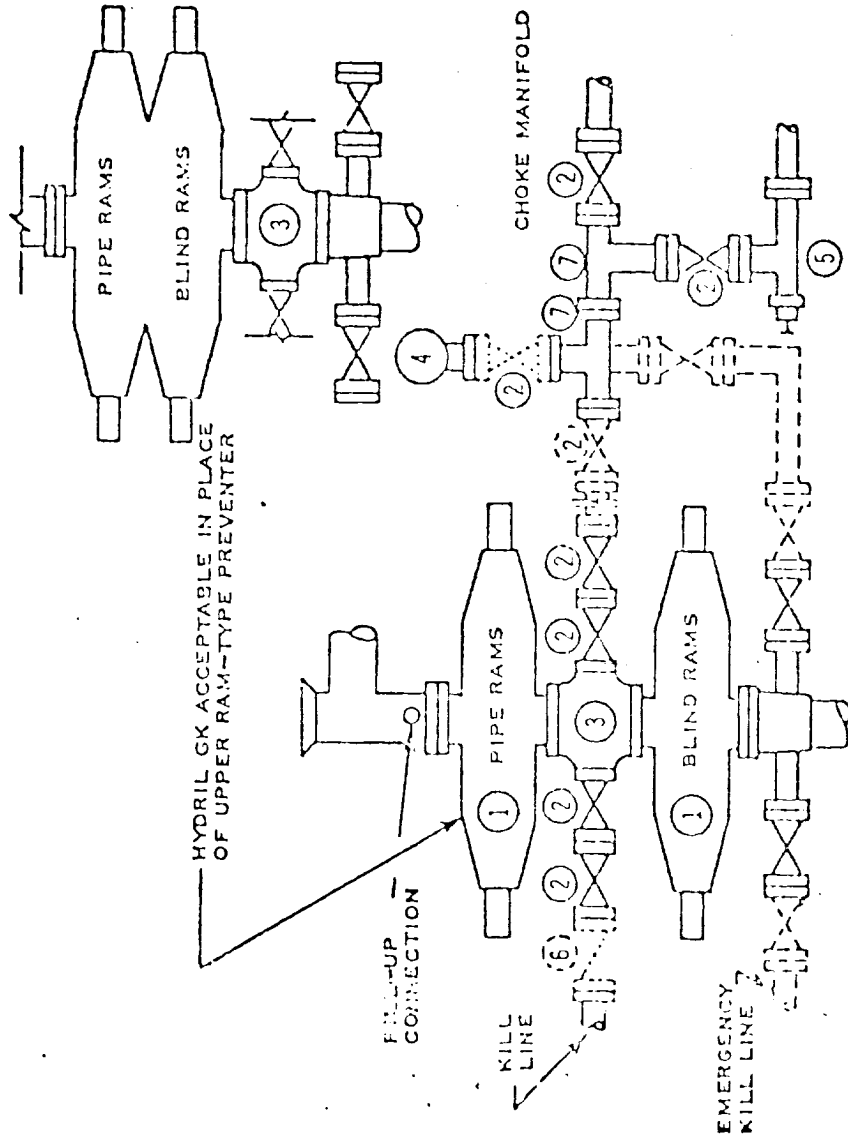
John W. West

676

Ronald J. Eldson

3239

# DOUBLE PREVENTER OPTION



- ① SERIES 900 RAM-TYPE BOP
- ② 2" SERIES 900 VALVE
- ③ SERIES 900 DRILLING SPOOL
- ④ 2" MUD PRESSURE GAUGE
- ⑤ 2" SERIES 900 CHOKE
- ⑥ 2" SERIES 900 CHECK VALVE
- ⑦ 2" SERIES 900 STEEL TEE

## NOTES:

1. 3000 PSI WP CLAMP  
HUBS MAY BE SUBSTITUTED  
FOR FLANGES

2. VALVES MAY BE EITHER HAND OR POWER  
OPERATED BUT, IF POWER OPERATED,  
THE VALVES FLANGED TO THE BOP RUN  
MUST BE CAPABLE OF BEING OPENED AND  
CLOSED MANUALLY OR CLOSE ON POWER  
FAILURE AND BE CAPABLE OF BEING  
OPENED MANUALLY

..... OPTIONAL EQUIPMENT

PHILLIPS PETROLEUM COMPANY

3000 PSI WORKING PRESSURE  
BLOWOUT PREVENTER HOOK-UP  
(SERIES 900 FLANGES OR BETTER)

RECEIVED

JUL 18 1979

O.C.D. HOBBS, OFFICE

