

NEW MEXICO OIL CONSERVATION COMMISSION
WELL LOCATION AND ACREAGE DEDICATION PLAT

Form O-102
Supersedes O-128
Effective 1-1-55

All distances given be from the outer corner of the well.

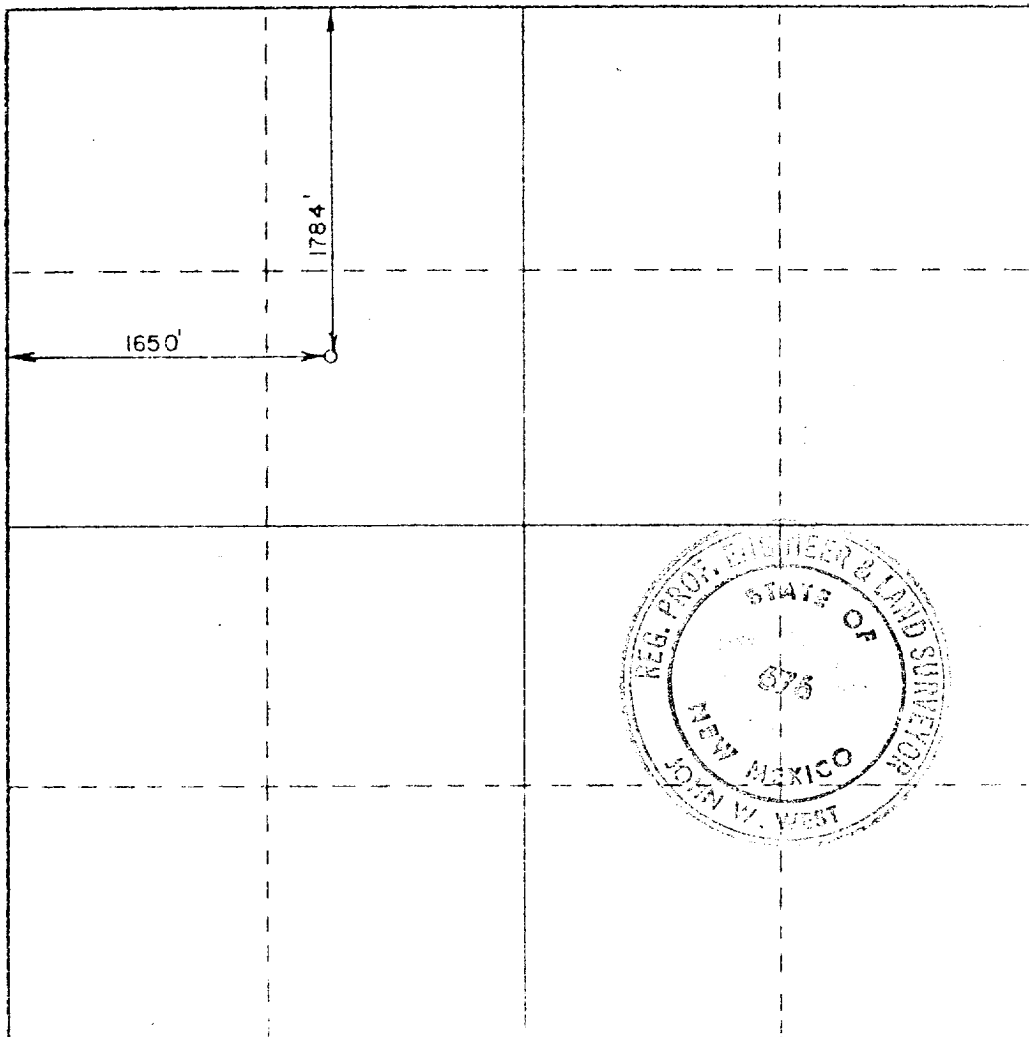
Operator Knox Industries			Lease New Mexico State			Well No. 1		
Section F	Section 2	Township 19 South	Range 34 East	County Lea				
Actual Well Location of Well: 1784 feet from the North line and 1650 feet from the West line								
Ground Level Elev. 3989.0		Producing Formation Morrow		Foot La Rica			Well Head A. Depth 640	

1. Outline the acreage dedicated to the subject well by colored pencil or hatchure marks on the plat below.
2. If more than one lease is dedicated to the well, outline each and identify the ownership thereof (both as to working interest and royalty).
3. If more than one lease of different ownership is dedicated to the well, have the interests of all owners been consolidated by communitization, unitization, force-pooling, etc?

☒ Yes ☐ No If answer is "yes," type of consolidation Communitization

If answer is "no," list the owners and tract descriptions which have actually been consolidated. (Use reverse side of this form if necessary.) _____

No allowable will be assigned to the well until all interests have been consolidated (by communitization, unitization, forced-pooling, or otherwise) or until a non-standard unit, eliminating such interests, has been approved by the Commission.



CERTIFICATION

I hereby certify that the information contained herein is true and complete to the best of my knowledge and belief

J.R. Colter
J.R. Colter
Engineer

Position
Knox Industries, Inc.

Date
January 22, 1980

I hereby certify that the well location shown on this plat was plotted from field notes of actual surveys made by me or under my supervision, and that the same is true and correct to the best of my knowledge and belief

Date Surveyed
December 6, 1979

Registered Professional Engineer
New Mexico State Board of Engineers

John W. West
John W. West
Registered Professional Engineer