

NEW MEXICO OIL CONSERVATION COMMISSION  
WELL LOCATION AND ACREAGE DEDICATION PLAT

Form O-111  
Supersedes C-128  
Effective 1-1-65

All distances must be from the outer boundaries of the Section

YATES PETROLEUM CORPORATION			Lease Reeves State K K		Well No. 1
Section Letter "D"	Section 14	Township 18 South	Range 35 East	County Lea	

Actual Well Location of Well:

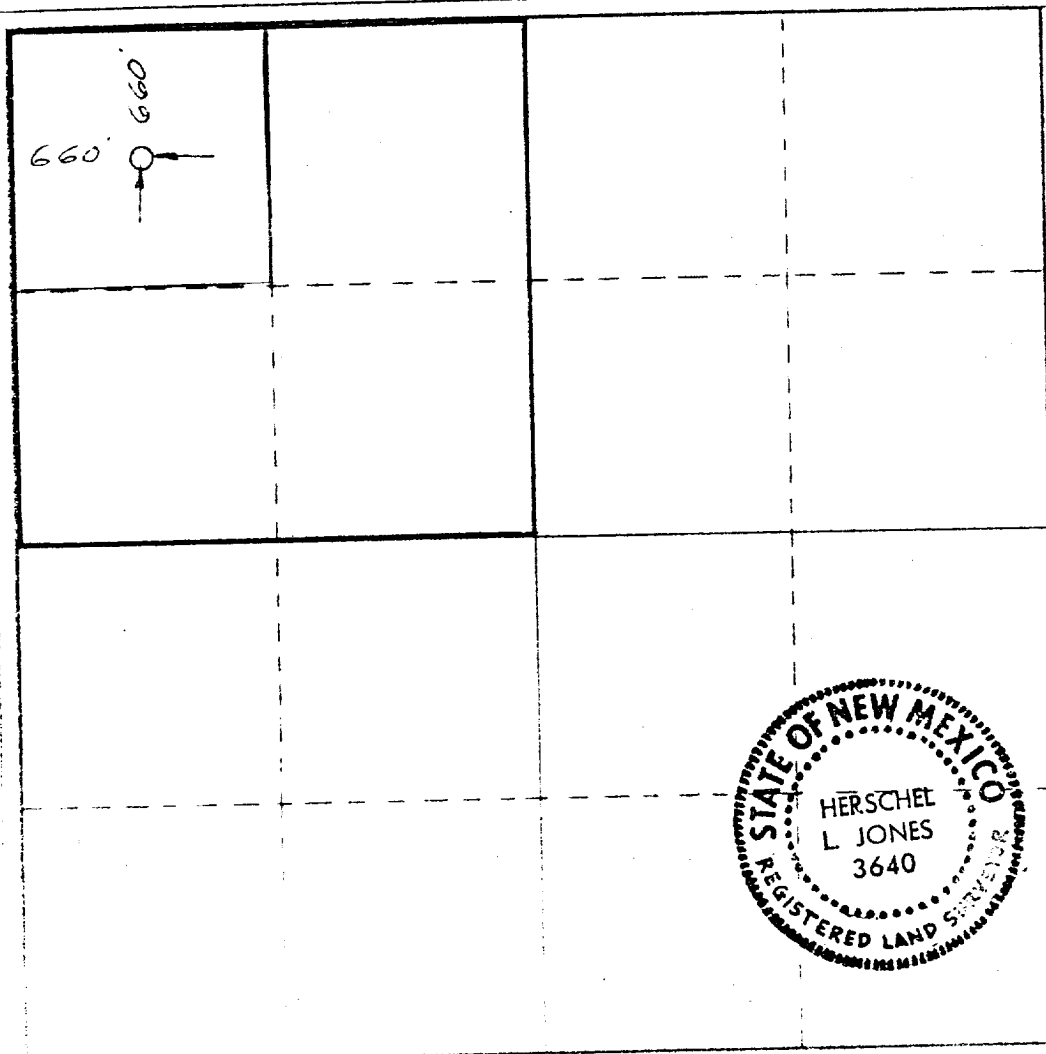
660	feet from the North	line and	660	feet from the West	line
Ground Level Elev. 3896.6	Producing Formation Strawn (O.I.)	Pool Undes (Reeves Pennsylvanian)	Dedicated Acreage: 160 Acres		

1. Outline the acreage dedicated to the subject well by colored pencil or hachure marks on the plat below.
2. If more than one lease is dedicated to the well, outline each and identify the ownership thereof (both as to working interest and royalty).
3. If more than one lease of different ownership is dedicated to the well, have the interests of all owners been consolidated by communitization, unitization, force-pooling, etc?

☐ Yes ☐ No If answer is "yes," type of consolidation \_\_\_\_\_

If answer is "no," list the owners and tract descriptions which have actually been consolidated. (Use reverse side of this form if necessary.) \_\_\_\_\_

No allowable will be assigned to the well until all interests have been consolidated (by communitization, unitization, forced-pooling, or otherwise) or until a non-standard unit, eliminating such interests, has been approved by the Commission.



CERTIFICATION

I hereby certify that the information contained herein is true and complete to the best of my knowledge and belief.

*Eddie M. Mahfood*  
Name **Eddie M. Mahfood**  
Position **ENGINEER**  
Company **YATES PETROLEUM CORP**  
Date **1-23-79**

I hereby certify that the well location shown on this plat was plotted from field notes of actual surveys made by me or under my supervision, and that the same is true and correct to the best of my knowledge and belief.

January 9, 1979

*Herschel L Jones*  
3640