

30-025-26785

NO. OF COPIES RECEIVED	
DISTRIBUTION	
SANTA FE	
FILE	
U.S.G.S.	
LAND OFFICE	
OPERATOR	

NEW MEXICO OIL CONSERVATION COMMISSION

Form C-101
Revised 1-1-65

5A. Indicate Type of Lease	
STATE <input checked="" type="checkbox"/>	FEE <input type="checkbox"/>
5. State Oil & Gas Lease No.	
OG-2001	
7. Unit Agreement Name	

8. Farm or Lease Name	
Quail State	
9. Well No.	
5	
10. Field and Pool, or Wildcat	
Quail Queen	
12. County	
Lea	
19. Proposed Depth	19A. Formation
6200'	Queen
20. Rotary or C.T.	
Rotary	
21. Elevations (Show whether DT, RL, etc.)	21B. Kind & Status of Bond
3980 GR - 3992' RKB	Statewide
21C. Drilling Contractor	
Kenai Drilling of Texas	
22. Approx. Date Work will start	
5-1-80	

APPLICATION FOR PERMIT TO DRILL, DEEPEN, OR PLUG BACK					
1a. Type of Work					
DRILL <input checked="" type="checkbox"/> DEEPEN <input type="checkbox"/> PLUG BACK <input type="checkbox"/>					
b. Type of Well					
OIL WELL <input checked="" type="checkbox"/> GAS WELL <input type="checkbox"/> OTHER <input type="checkbox"/>					
2. Name of Operator					
Read & Stevens, Inc.					
3. Address of Operator					
P. O. Box 1518, Roswell, New Mexico 88201					
4. Location of Well					
UNIT LETTER <u>L</u> LOCATED <u>1980</u> FEET FROM THE <u>South</u> LINE					
AND <u>660</u> FEET FROM THE <u>West</u> LINE OF SEC. <u>11</u> T. <u>19-S</u> R. <u>34-E</u> N. <u>34</u>					
23. PROPOSED CASING AND CEMENT PROGRAM					
SIZE OF HOLE	SIZE OF CASING	WEIGHT PER FOOT	SETTING DEPTH	SACKS OF CEMENT	EST. TOP
11"	8 5/8"	24#	1915'	575 sx.	Circulated
7 7/8"	4 1/2"	10.5#	6200'	700 sx.	3200'

See attached well prognosis for drilling program and blowout preventer data.

Casinghead gas acreage is not dedicated.

11. ABOVE SPACE DESCRIBE PROPOSED PROGRAM IF PROPOSAL IS TO DEEPEN OR PLUG BACK. GIVE DATA ON PRESENT PRODUCTIVE ZONE AND PROPOSED NEW PRODUCTIVE ZONE. GIVE BLOWOUT PREVENTER PROGRAM, IF ANY.

I hereby certify that the information above is true and complete to the best of my knowledge and belief.

Signed Shari Hamilton Title Authorized Agent Date April 30, 1980

(This space for State Use)

APPROVED BY [Signature] TITLE SUPERVISOR DISTRICT 1 DATE MAY 1 1980

CONDITIONS OF APPROVAL, IF ANY:

**MEXICO OIL CONSERVATION COMMISSION
WELL LOCATION AND ACREAGE DEDICATION PLAT**

Form C-102
Supersedes C-128
Effective 1-1-65

All distances must be from the outer boundaries of the Section

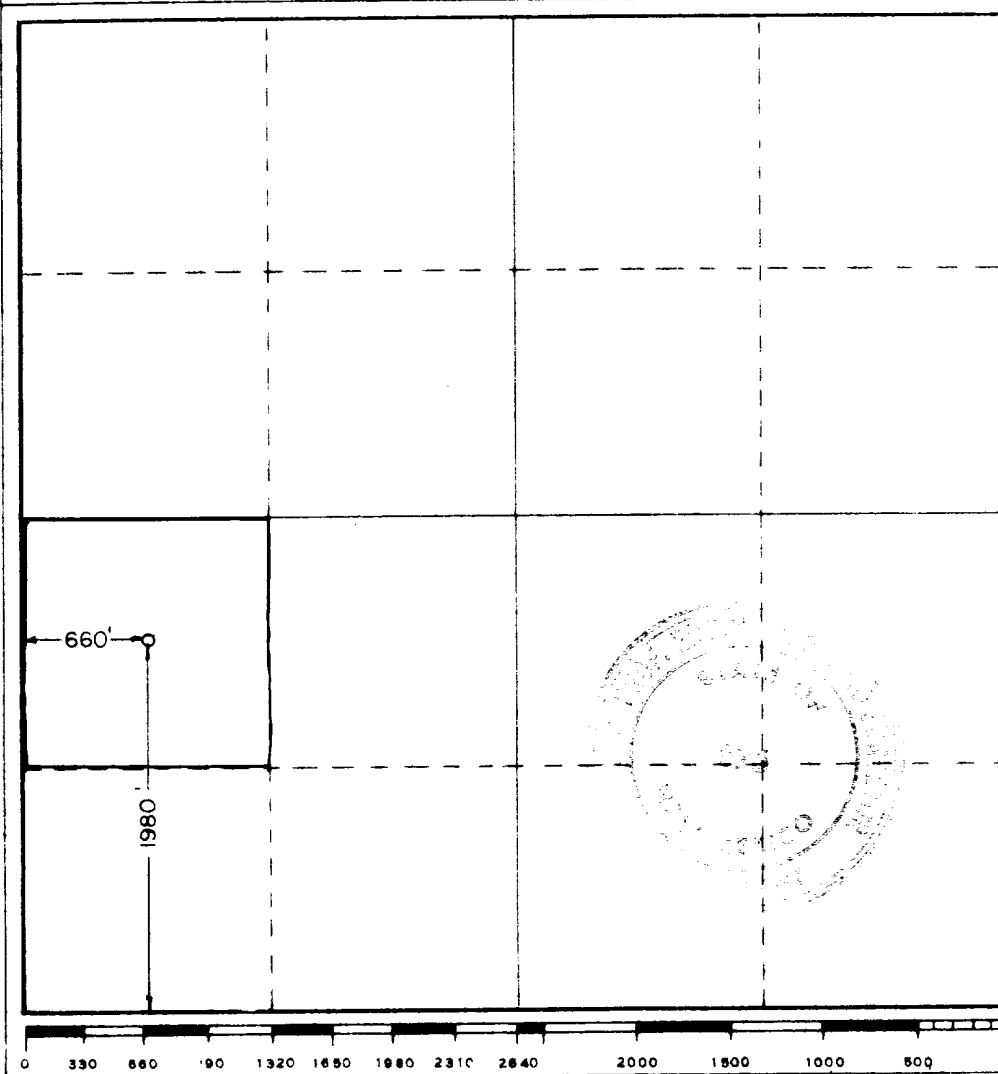
Operator Read & Stevens, Inc.,			Lease Quail State		Well No. 5
Unit Letter L	Section 11	Township 19 South	Range 34 East	County Lea	
Actual Footage Location of Well: 1700 feet from the South line and 660 feet from the West line					
Ground Level Elev. 3980.0	Producing Formation		Pool	Dedicated Acreage: Acres	

1. Outline the acreage dedicated to the subject well by colored pencil or hachure marks on the plat below.
2. If more than one lease is dedicated to the well, outline each and identify the ownership thereof (both as to working interest and royalty).
3. If more than one lease of different ownership is dedicated to the well, have the interests of all owners been consolidated by communitization, unitization, force-pooling, etc?

☐ Yes ☐ No If answer is "yes," type of consolidation _____

If answer is "no," list the owners and tract descriptions which have actually been consolidated. (Use reverse side of this form if necessary.) _____

No allowable will be assigned to the well until all interests have been consolidated (by communitization, unitization, forced-pooling, or otherwise) or until a non-standard unit, eliminating such interests, has been approved by the Commission.



CERTIFICATION

I hereby certify that the information contained herein is true and complete to the best of my knowledge and belief.

Name

Shari Hamilton

Position

Authorized Agent

Company

Read & Stevens, Inc.

Date

April 30, 1980

I hereby certify that the well location shown on this plat was plotted from field notes of actual surveys made by me or under my supervision, and that the same is true and correct to the best of my knowledge and belief.

Date Surveyed

February 22, 1980

Registered Professional Engineer
and/or Land Surveyor

John W. West
JOHN W. WEST

Certificate No. **678**
PATRICK A. ROBERTS

WELL PROGNOSIS

OPERATOR: READ & STEVENS, INC.
WELL: #5 Quail State
FIELD & DEPTH: Quail Queen - 6200'
LOCATION: 1980' FSL & 660' FWL Sec. 11, T-19-S, R-34-E, Lea County, N. M.
CONTRACTOR: Kenai Drilling Company of Texas, Rig #19
ELEVATION: 3980.0' GR - 3992' RKB

ESTIMATED FORMATION TOPS

T/Anhydrite	1857'	(+2135)
T/Salt	1982'	(+2010)
B/Salt	3326'	(+666)
T/Yates	3586'	(+406)
T/Queen Sand	4762'	(-770)
T/Penrose Sands	5040'	(-1048)
T/Grayburg	5431'	(-1439)
T/San Andres	5969'	(-1977)
T/Delaware	6219'	(-2227)

CASING PROGRAM

<u>Hole Size</u>	<u>Casing Size</u>	<u>Wt. Per Foot</u>	<u>Setting Depth</u>	<u>Cement</u>
11"	8 5/8"	24#	1900'	575 sx. circ.
7 7/8"	4 1/2"	10.5#	6200'	700 sx.

MUD PROGRAM

0' - 1,850' Spud mud with gel/lime slurry. Mud wt. 9.0#-9.5#, Vis. 32-34, WL no control.

1,850' - 4,600' Clear water and native mud. Mud wt. 10.0#-10.2#, Vis. 28-32, WL no control.

4,600' - 6,200' Salt gel mud system. Mud wt. 9.5#-10.2#, Vis. 36-38, WL 20.

DRILLING AND CEMENTING PROGRAM

1. Drill 11" hole to 1,900' and set 8 5/8", 24#, S.T. & C. casing at 1,900' cemented with 575 sx. Class C Cement with 2% CaCl₂ and 8# salt per sx. Cement will be circulated.
2. Drill 7 7/8" hole to 6,200' and, if production is indicated, set 4 1/2" casing to total depth. Cement from total depth to 3,200' with 700 sx. Class C pozmix with 1/4# floseal and 6# salt per sx. with .5 of 1% CFR-2.

EVALUATION PROGRAM

Start salt gel mud system at 4,600' for increased sample quality. Drill to total depth and run logs. Take selected sidewall cores for additional formation evaluation.

LOGGING PROGRAM

Run Simultaneous Gamma Ray-Caliper, Compensated Neutron Formation Density as porosity tool with Dual laterolog as Resistivity tool. Detail from 3,400' to total depth. Mud logging from 4000' to total depth.

BLOWOUT PREVENTER SYSTEM

Drilling rig will be equipped with a 10" Shaffer Type 48-E Double Hydraulic Series 900 blowout preventer with closing unit and accumulator, flanged kill line and valves, flanged 4" valves and lines with double 2" choke manifold, upper and lower Kelly Cocks and drill pipe dart valve (see attached plat).

WELL SUPERVISION

Well site supervision will be maintained from surface to total depth. Samples will be caught, washed and sacked from below surface string to 1,900' to total depth at 10 foot intervals. Mechanically recorded drilling time will be maintained from surface to total depth. Blowout preventer stack and casing head will be independently pressure tested before drilling into the Queen formation. A daily check of the blowout preventer system will be made from 4,600' to total depth.



MAJOR ITEMS of EQUIPMENT

Rig No. 19

Recommended Depth for Drilling 9,000' - 11,000'

DRAWWORKS:

Emsco Model GA 500 w/Parkersburg 36" Hydromatic Brake, and
2 - Model D-353 TA (400 HP) Caterpillar Engines

MAST:

L. C. Moore 127' 480,000# Capacity w/11' Substructure

MUD SYSTEM:

Emsco Model D-500 Pump (Forged Steel Fluid End)
Emsco Model D-175 w/Caterpillar D-342 Engine Pump Unit
Link Belt Vibrating 4 x 5 Shale Shaker
3 - 5 x 8 x 30 Steel Mud Pits with guns and jets

OVER-HEAD EQUIPMENT:

McKissick 4-36 200 Ton Traveling Block
Ideco SS 250 - 250 Ton Capacity Swivel
B. J. Model 4200 200 Ton Triplex Hook

ROTARY EQUIPMENT:

Emsco Model JCS 20-1/2" 250 Ton Rotary Table

WELL CONTROL EQUIPMENT:

Shaffer 10" Series 900 Type 48-E Double Hydraulic B.O.P.
Closing Unit and Accumulator
Flanged Kill Line and Valves
Flanged 4" Valves and Lines with Double 2" Choke Manifold
Upper and Lower Kelly Cocks
Drill Pipe Dart Valve

OPERATIONAL INSTRUMENTS:

Bell Automatic Driller, Martin Decker 3 Pen Recordergraph,
Martin-Decker Torque Gauge, A-1 Sureshot 14"

ELECTRICAL SYSTEM:

1 - Waukesha VRD 283 30 KW Electric Set
1 - String of Rig-O-Lite Vapor Proof Lights

WATER STORAGE:

500 bbl. Horizontal Water Tank

DRILLING STRING:

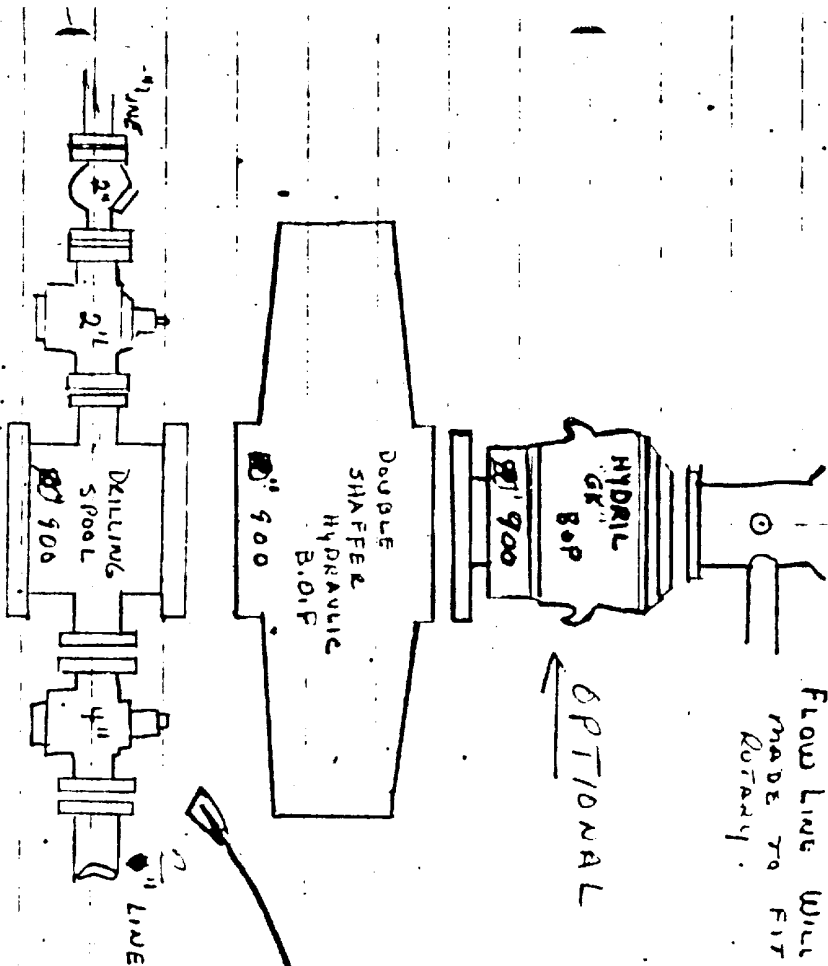
4" O. D. Grade E Drill Pipe (11,000')
Size and number required of Drill Collars and Subs

MISCELLANEOUS EQUIPMENT:

30' Trailer House with beds, kitchen and bath
Other equipment available from yard as job requires

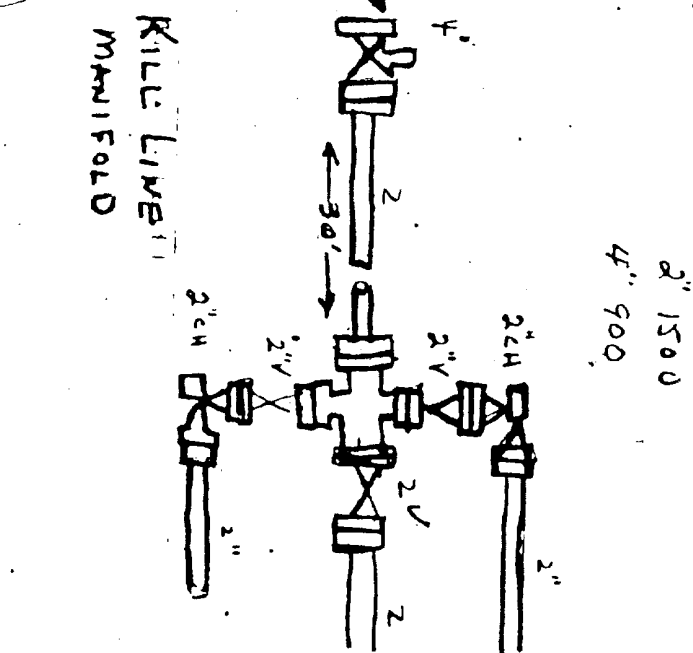


Rotary Table



Flow Line Will Have To Be Made To Fit Under

OPTIONAL



RECEIVED

1 1980

CONSERVATION DIV

113