

30-025-26790

NO. OF COPIES RECEIVED	
DISTRIBUTION	
SANTA FE	
FILE	
U.S.G.S.	
LAND OFFICE	
OPERATOR	

NEW MEXICO OIL CONSERVATION COMMISSION

Form C-101
Revised 1-1-65

5A. Indicate Type of Lease	
STATE <input checked="" type="checkbox"/>	FEE <input type="checkbox"/>
5. State Oil & Gas Lease No.	
7. Unit Agreement Name	
8. Farm or Lease Name	
Central Vacuum Unit	
9. Well No.	
146	
10. Field and Pool, or Wildcat	
Vacuum Grayburg-S.A.	
12. County	
Lea	
19. Proposed Depth	19A. Formation
4800'	Vacuum-S.A.
20. Rotary or C.T.	
Rotary	
21. Elevations (Show whether DF, RT, etc.)	21B. Drilling Contractor
3975' Gr.	
22. Approx. Date Work will start	
6-10-80	

APPLICATION FOR PERMIT TO DRILL, DEEPEN, OR PLUG BACK

1a. Type of Work

DRILL ☒DEEPEN ☐PLUG BACK ☐

b. Type of Well

OIL WELL ☐GAS WELL ☐

OTHER Wtr. Inj.

SINGLE ZONE ☐MULTIPLE ZONE ☐

2. Name of Operator

Texaco Inc.

3. Address of Operator

P. O. Box 3109 - Midland, Texas 79702

4. Location of Well

UNIT LETTER G

LOCATED 2465

FEET FROM THE North

LINE

AND 1335

FEET FROM THE East

LINE OF SEC. 31

TWP. 17-S

RGE. 35-E

NMPM

12. County

Lea

21. Elevations (Show whether DF, RT, etc.)

3975' Gr.

21A. Kind & Status Plug. Bond

19. Proposed Depth

4800'

19A. Formation

Vacuum-S.A.

20. Rotary or C.T.

Rotary

21B. Drilling Contractor

22. Approx. Date Work will start

6-10-80

PROPOSED CASING AND CEMENT PROGRAM

SIZE OF HOLE	SIZE OF CASING	WEIGHT PER FOOT	SETTING DEPTH	SACKS OF CEMENT	EST. TOP
12-1/4"	8-5/8"	24# -K-55STC	1570'	1200	Circulate
7-7/8"	4-1/2"	10.5# -K-55STC	4800'	3200	Circulate
17-1/2"	13-3/8"	48# H-40 STC	350'		Circulate

Surface Casing1200 sxs. Class "C" w/2% CaCl₂ (14.8 ppg, 1.32 ft³/sx)Production Casing3000 sxs. Lite Weight w/15# Salt, 1/4# Flocele/sx. (12.54 ppg, 1.83 ft³/sx), followed by 200 sxs. Class "C" w/8# salt, 1/4# Flocele/sx (14.44 ppg, 1.38 ft³/sx)Additional Surface Casing400 sxs. Class "C" w/2% CaCl₂ (14.8 ppg, 1.32 ft³/sx).

ABOVE SPACE DESCRIBE PROPOSED PROGRAM: IF PROPOSAL IS TO DEEPEN OR PLUG BACK, GIVE DATA ON PRESENT PRODUCTIVE ZONE AND PROPOSED NEW PRODUCTION ZONE. GIVE BLOWOUT PREVENTER PROGRAM, IF ANY.

I hereby certify that the information above is true and complete to the best of my knowledge and belief.

Signed Sal Wilson Title Assistant Division Petroleum EngineerDate April 28, 1980

(This space for State Use)

PROVED BY James L. Linton TITLE SUPERVISOR DISTRICT

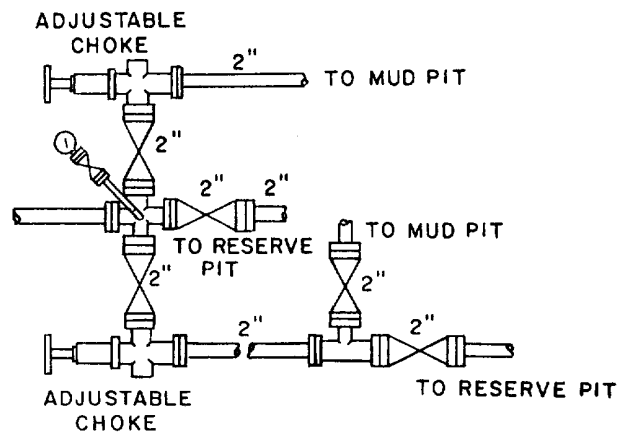
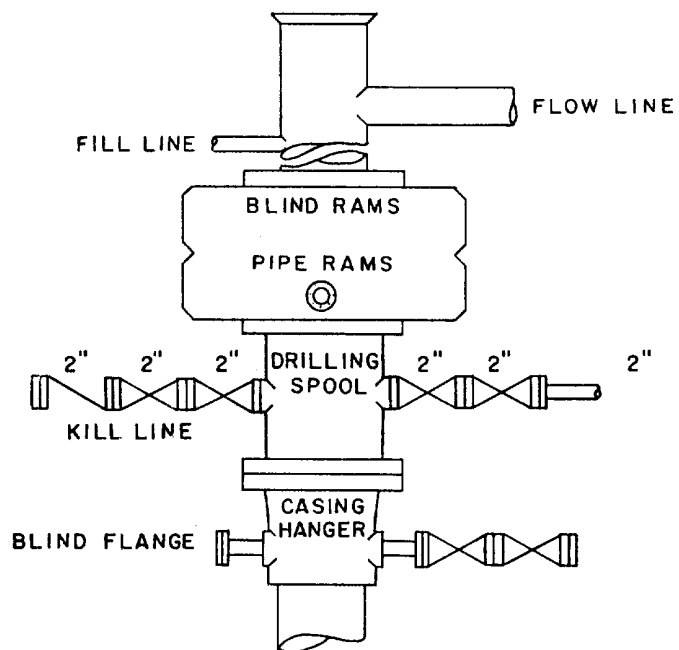
CONDITIONS OF APPROVAL, IF ANY:

DATE APPROVAL VALIDFOR 90 DAYS UNLESS
DRILLING COMMENCED,

EXPIRES

9-18-80

0	330	660	990	1320	1650	1980	2310	2640	2970	3300	3630	3960	4290	4620	4950	5280	5610	5940	6270	6600	6930	7260	7590	7920	8250	8580	8910	9240	9570	9900	10230	10560	10890	11220	11550	11880	12210	12540	12870	13200	13530	13860	14190	14520	14850	15180	15510	15840	16170	16500	16830	17160	17490	17820	18150	18480	18810	19140	19470	19800	20130	20460	20790	21120	21450	21780	22110	22440	22770	23100	23430	23760	24090	24420	24750	25080	25410	25740	26070	26400	26730	27060	27390	27720	28050	28380	28710	29040	29370	29700	30030	30360	30690	31020	31350	31680	32010	32340	32670	33000	33330	33660	33990	34320	34650	34980	35310	35640	35970	36300	36630	36960	37290	37620	37950	38280	38610	38940	39270	39600	39930	40260	40590	40920	41250	41580	41910	42240	42570	42900	43230	43560	43890	44220	44550	44880	45210	45540	45870	46200	46530	46860	47190	47520	47850	48180	48510	48840	49170	49500	49830	50160	50490	50820	51150	51480	51810	52140	52470	52800	53130	53460	53790	54120	54450	54780	55110	55440	55770	56100	56430	56760	57090	57420	57750	58080	58410	58740	59070	59400	59730	60060	60390	60720	61050	61380	61710	62040	62370	62700	63030	63360	63690	64020	64350	64680	65010	65340	65670	66000	66330	66660	66990	67320	67650	67980	68310	68640	68970	69300	69630	69960	70290	70620	70950	71280	71610	71940	72270	72600	72930	73260	73590	73920	74250	74580	74910	75240	75570	75900	76230	76560	76890	77220	77550	77880	78210	78540	78870	79200	79530	79860	80190	80520	80850	81180	81510	81840	82170	82500	82830	83160	83490	83820	84150	84480	84810	85140	85470	85800	86130	86460	86790	87120	87450	87780	88110	88440	88770	89100	89430	89760	90090	90420	90750	91080	91410	91740	92070	92400	92730	93060	93390	93720	94050	94380	94710	95040	95370	95700	96030	96360	96690	97020	97350	97680	98010	98340	98670	99000
---	-----	-----	-----	------	------	------	------	------	------	------	------	------	------	------	------	------	------	------	------	------	------	------	------	------	------	------	------	------	------	------	-------	-------	-------	-------	-------	-------	-------	-------	-------	-------	-------	-------	-------	-------	-------	-------	-------	-------	-------	-------	-------	-------	-------	-------	-------	-------	-------	-------	-------	-------	-------	-------	-------	-------	-------	-------	-------	-------	-------	-------	-------	-------	-------	-------	-------	-------	-------	-------	-------	-------	-------	-------	-------	-------	-------	-------	-------	-------	-------	-------	-------	-------	-------	-------	-------	-------	-------	-------	-------	-------	-------	-------	-------	-------	-------	-------	-------	-------	-------	-------	-------	-------	-------	-------	-------	-------	-------	-------	-------	-------	-------	-------	-------	-------	-------	-------	-------	-------	-------	-------	-------	-------	-------	-------	-------	-------	-------	-------	-------	-------	-------	-------	-------	-------	-------	-------	-------	-------	-------	-------	-------	-------	-------	-------	-------	-------	-------	-------	-------	-------	-------	-------	-------	-------	-------	-------	-------	-------	-------	-------	-------	-------	-------	-------	-------	-------	-------	-------	-------	-------	-------	-------	-------	-------	-------	-------	-------	-------	-------	-------	-------	-------	-------	-------	-------	-------	-------	-------	-------	-------	-------	-------	-------	-------	-------	-------	-------	-------	-------	-------	-------	-------	-------	-------	-------	-------	-------	-------	-------	-------	-------	-------	-------	-------	-------	-------	-------	-------	-------	-------	-------	-------	-------	-------	-------	-------	-------	-------	-------	-------	-------	-------	-------	-------	-------	-------	-------	-------	-------	-------	-------	-------	-------	-------	-------	-------	-------	-------	-------	-------	-------	-------	-------	-------	-------	-------	-------	-------	-------	-------	-------	-------	-------	-------	-------	-------	-------	-------	-------	-------	-------	-------	-------	-------	-------	-------	-------	-------	-------	-------	-------	-------	-------	-------	-------	-------	-------	-------	-------	-------



SCALE: NONE	DATE	EST. NO.	DRG. NO.
DRAWN BY JWD			
CHECKED BY RDW			
APPROVED BY			



TEXACO, INC.
PRODUCING DEPARTMENT-U.S. (EAST)
MIDLAND, TEXAS



EXHIBIT "B"

RECEIVED

MAY 2 1980

OIL CONSERVATION DIV.

N MEXICO OIL CONSERVATION COMMISSION
WELL LOCATION AND ACREAGE DEDICATION PLAT

Form C-102
Supersedes C-128
Effective 1-1-65

All distances must be from the outer boundaries of the Section.

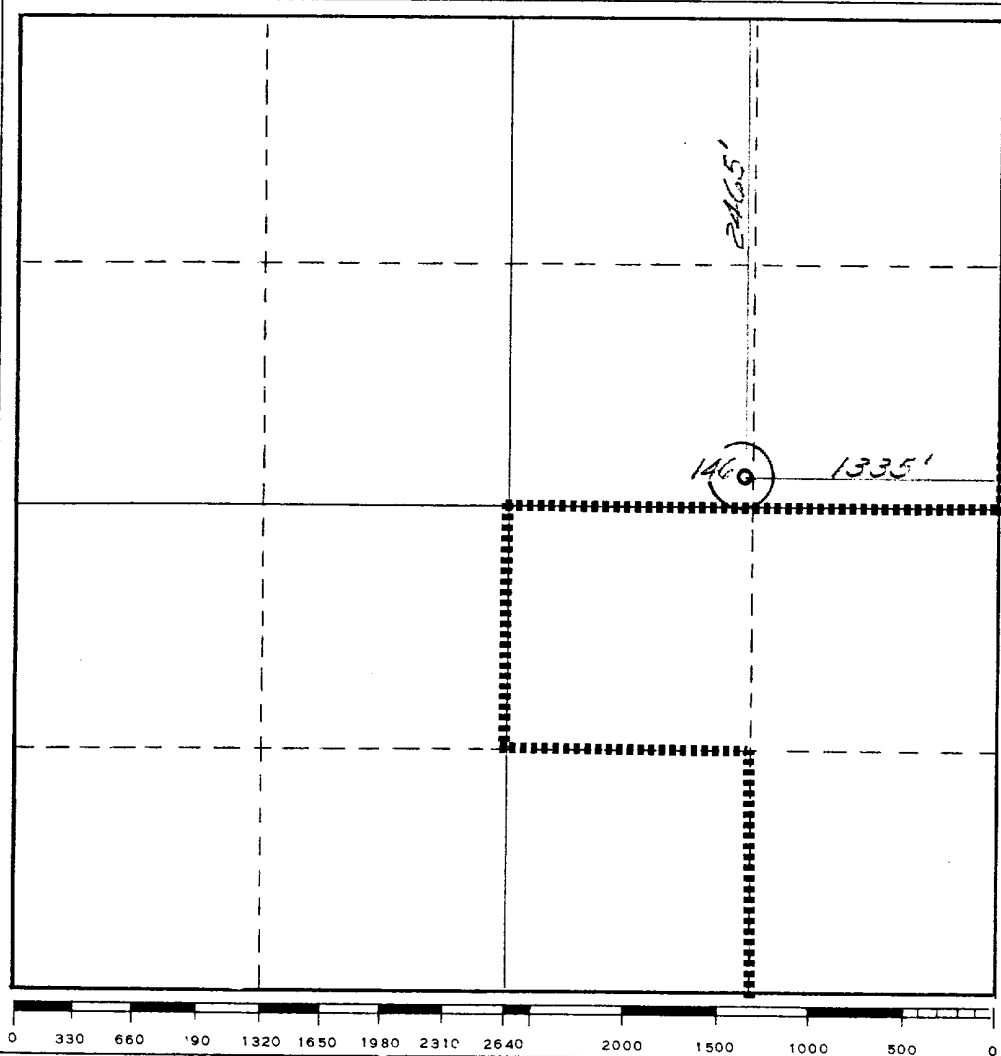
Operator Texaco Inc.		Lease Central Vacuum Unit		Well No. 146
Unit Letter G	Section 31	Township T-17-S	Range R-35-E	County Lea
Actual Footage Location of Well: 2465 feet from the North line and 1335 feet from the East line				
Ground Level Elev. 3975'	Producing Formation Vacuum San Andres	Pool Vacuum (Grayburg-S.A.)	Dedicated Acreage: 40 Acres	

1. Outline the acreage dedicated to the subject well by colored pencil or hachure marks on the plat below.
2. If more than one lease is dedicated to the well, outline each and identify the ownership thereof (both as to working interest and royalty).
3. If more than one lease of different ownership is dedicated to the well, have the interests of all owners been consolidated by communitization, unitization, force-pooling, etc?

☐ Yes ☐ No If answer is "yes," type of consolidation _____

If answer is "no," list the owners and tract descriptions which have actually been consolidated. (Use reverse side of this form if necessary.) _____

No allowable will be assigned to the well until all interests have been consolidated (by communitization, unitization, forced-pooling, or otherwise) or until a non-standard unit, eliminating such interests, has been approved by the Commission.



CERTIFICATION

I hereby certify that the information contained herein is true and complete to the best of my knowledge and belief.

B. L. Eiland

Name

B. L. Eiland

Position

Division Surveyor

Company

Texaco Inc.

Date

April 28, 1980

I hereby certify that the well location shown on this plat was plotted from field notes of actual surveys made by me or under my supervision, and that the same is true and correct to the best of my knowledge and belief.

April 22, 1980

Date Surveyed

Registered Professional Engineer and/or Land Surveyor

B. L. Eiland
B. L. Eiland

Certificate No.

4386