

30-025-26771

| | |
|------------------------|--|
| NO. OF COPIES RECEIVED | |
| DISTRIBUTION | |
| SANTA FE | |
| FILE | |
| U.S.G.S. | |
| LAND OFFICE | |
| OPERATOR | |

NEW MEXICO OIL CONSERVATION COMMISSION

Form C-101
Revised 1-1-65

| | |
|---|------------------------------|
| 5A. Indicate Type of Lease | |
| STATE <input checked="" type="checkbox"/> | FEE <input type="checkbox"/> |
| 5. State Oil & Gas Lease No. | |

APPLICATION FOR PERMIT TO DRILL, DEEPEN, OR PLUG BACK

| | |
|--|--|
| 1a. Type of Work | |
| b. Type of Well DRILL <input checked="" type="checkbox"/> DEEPEN <input type="checkbox"/> PLUG BACK <input type="checkbox"/> | |
| c. Name of Operator | |
| Texaco Inc. | |
| 3. Address of Operator | |
| P. O. Box 3109 - Midland, Texas 79702 | |
| 4. Location of Well | |
| UNIT LETTER A LOCATED 1310 FEET FROM THE North LINE | |
| AND 200 FEET FROM THE East LINE OF SEC. 31 TWP. 17-S RGE. 35-E NMPM | |
| 19. Proposed Depth | |
| 4800' | |
| 19A. Formation | |
| Vacuum-S.A. | |
| 20. Rotary or C.T. | |
| Rotary | |
| 21. Elevations (Show whether D.F., RT, etc.) | |
| 3969' Gr. | |
| 21A. Kind & Status Plug. Bond | |
| 21B. Drilling Contractor | |
| 22. Approx. Date Work will start | |
| 6-10-80 | |

| | |
|--------------------------------|--|
| 7. Unit Agreement Name | |
| 8. Farm or Lease Name | |
| Central Vacuum Unit | |
| 9. Well No. | |
| 147 | |
| 10. Field and Pool, or Wildcat | |
| Vacuum Grayburg-S.A. | |
| 12. County | |
| Lea | |

PROPOSED CASING AND CEMENT PROGRAM

| SIZE OF HOLE | SIZE OF CASING | WEIGHT PER FOOT | SETTING DEPTH | SACKS OF CEMENT | EST. TOP |
|--------------|----------------|-----------------|---------------|-----------------|-----------|
| 12-1/4" | 8-5/8" | 24# -K-55STC | 1570' | 1200 | Circulate |
| 7-7/8" | 4-1/2" | 10.5#-K-55STC | 4800' | 3200 | Circulate |
| 17-1/2" | 13-3/8" | 48# H-40 STC | 350' | 400 | Circulate |

Surface Casing 1200 sxs. Class "C" w/2% CaCl₂ (14.8 ppg, 1.32 Ft³/sx)

Production Casing 3000 sxs. Lite Weight w/15# salt, 1/4# Flocele/sx, (12.54 ppg, 1.83 ft³/sx), followed by 200 sxs. Class "C" w/8# salt, 1/4# Flocele/sx (14.44 ppg, 1.38 ft³/sx).

Additional Surface Casing 400 sxs. Class "C" w/2% CaCl₂ (14.8 ppg, 1.32 ft³/sx).

APPROVAL VALID
FOR 90 DAYS UNLESS
DRILLING COMMENCED.

EXPIRES 9-18-80

IN ABOVE SPACE DESCRIBE PROPOSED PROGRAM; IF PROPOSAL IS TO DEEPEN OR PLUG BACK, GIVE DATA ON PRESENT PRODUCTIVE ZONE AND PROPOSED NEW PRODUCTIVE ZONE. GIVE BLOWOUT PREVENTER PROGRAM, IF ANY.

I hereby certify that the information above is true and complete to the best of my knowledge and belief.

Signed [Signature] Title Assistant Division Petroleum Engineer Date April 28, 1980

(This space for State Use)

APPROVED BY [Signature] TITLE SUPERVISOR DISTRICT DATE JUN 15 1980

CONDITIONS OF APPROVAL, IF ANY:

NEW MEXICO OIL CONSERVATION COMMISSION
WELL LOCATION AND ACREAGE DEDICATION PLAT

Form C-102
Supersedes C-128
Effective 1-1-65

All distances must be from the outer boundaries of the Section.

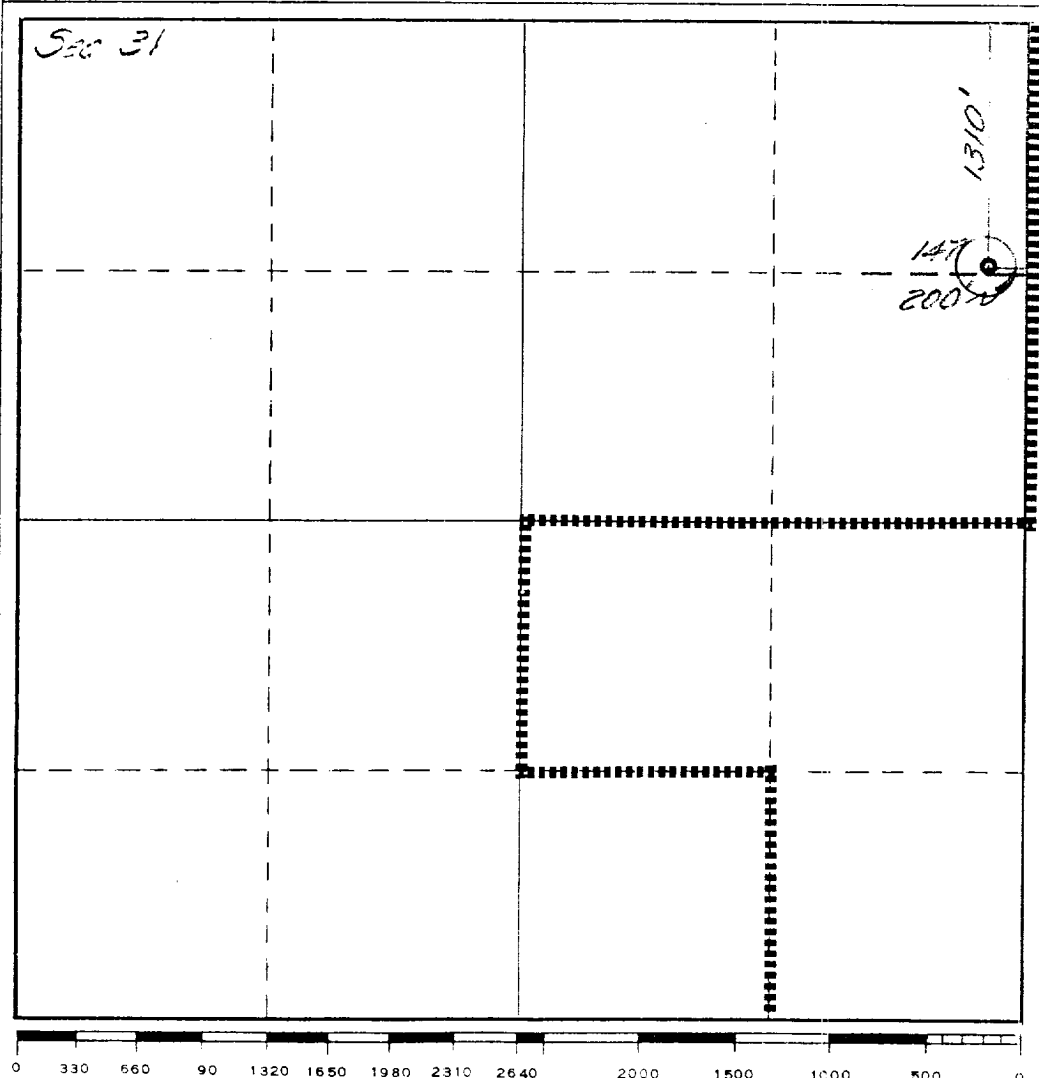
| | | | | |
|---|---|---------------------------------------|---------------------------------------|------------------------|
| Operator Texaco Inc. | | Lease Central Vacuum Unit | | Well No. 147 |
| Unit Letter A | Section 31 | Township T-17-S | Range R-35-E | County Lea |
| Actual Portage Location of Well: 1310 feet from the North line and 200 feet from the East line | | | | |
| Ground Level Elev. 3969' | Producing Formation Vacuum San Andres | Pool Vacuum (Grayburg-S.A.) | Dedicated Acreage: 40 Acres | |

1. Outline the acreage dedicated to the subject well by colored pencil or hachure marks on the plat below.
2. If more than one lease is dedicated to the well, outline each and identify the ownership thereof (both as to working interest and royalty).
3. If more than one lease of different ownership is dedicated to the well, have the interests of all owners been consolidated by communitization, unitization, force-pooling, etc?

☐ Yes ☐ No If answer is "yes," type of consolidation _____

If answer is "no," list the owners and tract descriptions which have actually been consolidated. (Use reverse side of this form if necessary.) _____

No allowable will be assigned to the well until all interests have been consolidated (by communitization, unitization, forced-pooling, or otherwise) or until a non-standard unit, eliminating such interests, has been approved by the Commission.



CERTIFICATION

I hereby certify that the information contained herein is true and complete to the best of my knowledge and belief.

B. L. Eiland

Name

B. L. Eiland

Position

Division Surveyor

Company

Texaco Inc.

Date

April 28, 1980

I hereby certify that the well location shown on this plat was plotted from field notes of actual surveys made by me or under my supervision, and that the same is true and correct to the best of my knowledge and belief.

April 22, 1980

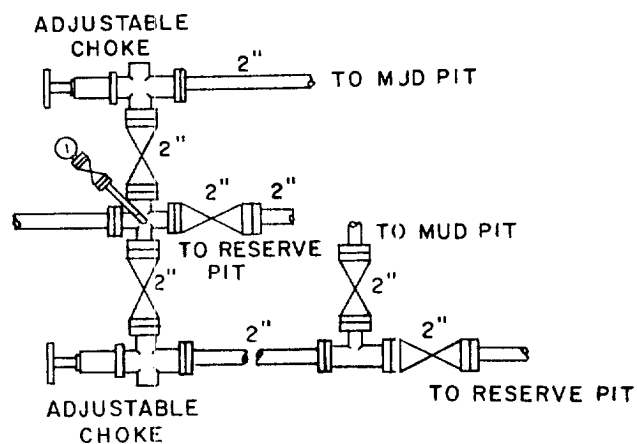
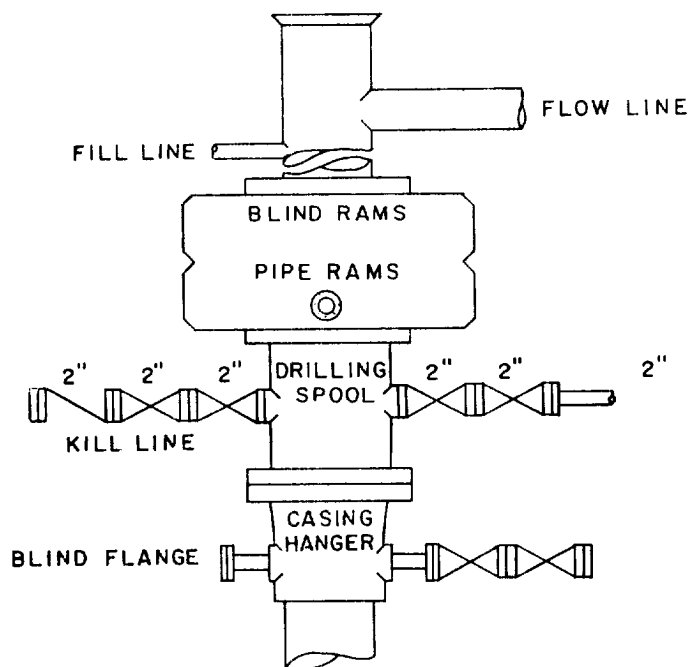
Date Surveyed

Registered Professional Engineer and/or Land Surveyor

B. L. Eiland
B. L. Eiland

Certificate No.

4386



| | | | |
|----------------|------|----------|----------|
| SCALE: NONE | DATE | EST. NO. | DRG. NO. |
| DRAWN BY JWD | | | |
| CHECKED BY RDW | | | |
| APPROVED BY | | | |



TEXACO, INC.
PRODUCING DEPARTMENT-U.S. (EAST)
MIDLAND, TEXAS



EXHIBIT "B"

RECEIVED

MAY 2 1980

OIL CONSERVATION DIV.

113