

30-025-26793

NO. OF COPIES RECEIVED	
DISTRIBUTION	
SANTA FE	
FILE	
U.S.G.S.	
LAND OFFICE	
OPERATOR	

NEW MEXICO OIL CONSERVATION COMMISSION

Form C-101
Revised 1-1-65

5A. Indicate Type of Lease	
STATE <input checked="" type="checkbox"/>	FEE <input type="checkbox"/>
State Oil & Gas Lease No.	

APPLICATION FOR PERMIT TO DRILL, DEEPEN, OR PLUG BACK

1a. Type of Work		7. Unit Agreement Name	
b. Type of Well OIL WELL <input type="checkbox"/> GAS WELL <input type="checkbox"/> OTHER <input checked="" type="checkbox"/> Wtr. Inj.		8. Farm or Lease Name Central Vacuum Unit	
2. Name of Operator Texaco Inc.		9. Well No. 149	
3. Address of Operator P. O. Box 3109 - Midland, Texas 79702		10. Field and Pool, or Wildcat Vacuum Grayburg-S.A.	
4. Location of Well UNIT LETTER H LOCATED 1330 FEET FROM THE North LINE AND 50 FEET FROM THE East LINE OF THE 30 17-S 35-E		11. County Lea	
21. Elevations (Show whether DE, RL, etc.) 3983' Gr.		20. Rotary or C.T. Rotary	
21A. Kind of Mud (Type, Weight, etc.) 4800'		21B. Approx. Date Work will start - 6-10-80	

23.

PROPOSED CASING AND CEMENT PROGRAM

SIZE OF HOLE	SIZE OF CASING	WEIGHT PER FOOT	SETTING DEPTH	SACKS OF CEMENT	EST. TOP
12-1/4"	8-5/8"	24# -K-55STC	1630'	1200	Circulate
7-7/8"	4-1/2"	10.5# -K-55STC	4800'	3200	Circulate
17-1/2"	13-3/8"	48# H-40 STC	350'	400	Circulate

Surface Casing 1200 sxs. Class "C" w/2% CaCl₂ (14.8 ppg, 1.32 ft³/sx)

Production Casing 3000 sxs. Lite Weight w/15# salt, 1/4# Flocele/sx., (12.54 ppg, 1.83 ft³/sx), followed by 200 sxs. Class "C" w/8# salt, 1/4# flocele/sx (14.44 ppg, 1.38 ft³/sx)

Additional Surface Casing

400 sxs. Class "C" w/2% CaCl₂ (14.8 ppg, 1.32 ft³/sx).

APPROVAL VALID
FOR 90 DAYS UNLESS
DRILLING COMMENCED,

EXPIRES

9-18-80

IN ABOVE SPACE DESCRIBE PROPOSED PROGRAM IN
TIVE ZONE, GIVE BLOWOUT PREVENTER PROGRAM, IF ANY.

I hereby certify that the information above is true and correct.

Signed Ed Wilson Assistant Division
Petroleum Engineer

April 28, 1980

(This space for state use)

APPROVED BY

SUPERVISOR DISTRICT

DATE

CONDITIONS OF APPROVAL, IF ANY:

NEW MEXICO OIL CONSERVATION COMMISSION
WELL LOCATION AND ACREAGE DEDICATION PLAT

Form C-102
Supersedes C-128
Effective 1-1-65

All distances must be from the outer boundaries of the Section.

Operator Texaco Inc.		Lease Central Vacuum Unit		Well No. 149
Unit Letter H	Section 30	Township T-17-S	Range R-35-E	County Lea
Actual Footage Location of Well: 1330 feet from the North line and 50 feet from the East line				
Ground Level Elev. 3983'	Producing Formation Vacuum San Andres	Pool Vacuum (Grayburg-S.A.)	Dedicated Acreage: 40 Acres	

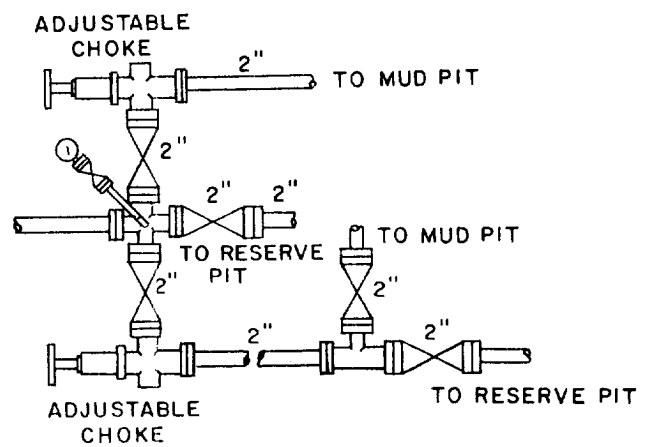
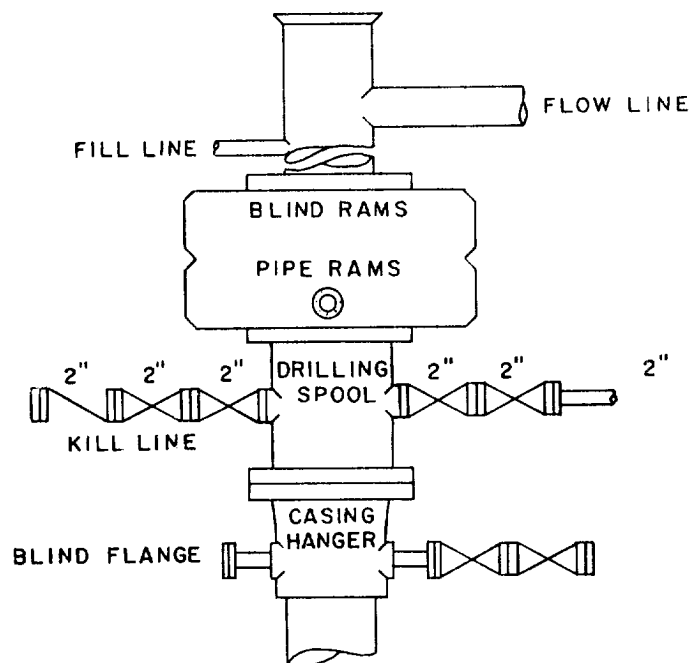
1. Outline the acreage dedicated to the subject well by colored pencil or hachure marks on the plat below.
2. If more than one lease is dedicated to the well, outline each and identify the ownership thereof (both as to working interest and royalty).
3. If more than one lease of different ownership is dedicated to the well, have the interests of all owners been consolidated by communitization, unitization, force-pooling, etc?

☐ Yes ☐ No If answer is "yes," type of consolidation _____

If answer is "no," list the owners and tract descriptions which have actually been consolidated. (Use reverse side of this form if necessary.) _____

No allowable will be assigned to the well until all interests have been consolidated (by communitization, unitization, forced-pooling, or otherwise) or until a non-standard unit, eliminating such interests, has been approved by the Commission.

	CERTIFICATION	
	I hereby certify that the information contained herein is true and complete to the best of my knowledge and belief.	
	Name B. L. Eiland	
	Position Division Surveyor	
	Company Texaco Inc.	
Date April 28, 1980		
I hereby certify that the well location shown on this plat was plotted from field notes of actual surveys made by me or under my supervision, and that the same is true and correct to the best of my knowledge and belief.		
April 21, 1980 Date Surveyed		
Registered Professional Engineer and/or Land Surveyor 		
Certificate No. 4386		



SCALE: NONE	DATE	EST. NO.	DRG. NO.
DRAWN BY JWD			
CHECKED BY RDW			
APPROVED BY			



TEXACO, INC.
PRODUCING DEPARTMENT-U.S. (EAST)
MIDLAND, TEXAS



EXHIBIT "B"