

30-025-27133

NO. OF COPIES RECEIVED	
DISTRIBUTION	
SANTA FE	
FILE	
U.S.G.S.	
LAND OFFICE	
OPERATOR	

## NEW MEXICO OIL CONSERVATION COMMISSION

Form 7-101  
Revised 1-1-65

1. Indicate Type of Lease	
STATE <input checked="" type="checkbox"/>	FEE <input type="checkbox"/>
2. The Oil & Gas Lease No.	

## APPLICATION FOR PERMIT TO DRILL, DEEPEN OR PLUG BACK

1a. Type of Work		1b. Unit Agreement Name	
b. Type of Well OIL WELL <input checked="" type="checkbox"/> GAS WELL <input type="checkbox"/> DEEPEN <input type="checkbox"/> PLUG BACK <input type="checkbox"/>		West Vacuum Unit	
2. Name of Operator		3. Farm or Lease Name	
Texaco Inc.		4. Well No.	
3. Address of Operator		5. Field and Pool, or Wildcat	
P. O. Box 3109, Midland, Texas 79702		Vacuum	
4. Location of Well		Grayburg-San Andres	
UNIT LETTER L LOCATED 2130 FEET FROM THE south LINE		6. County	
AND 810 FEET FROM THE west LINE OF THE 33 17-S 34-E		Lea	
7. Elevation (Show whether DT, RL, etc.)		8. Rotary or C.T.	
4047' Gr.		Rotary	
9. Kind & Quantity of Cement		10. Approx. Date Work will start	
4750'		11-14-80	

## PROPOSED CASING AND CEMENT PROGRAM

SIZE OF HOLE	SIZE OF CASING	WEIGHT PER FOOT	SETTING DEPTH	SACKS OF CEMENT	EST. TOP
15"	11-3/4"	42#, H-40STC	350'	400	Cem. must circ
11"	8-5/8"	24#, K-55STC	1610'	800	Cem. must circ
7-7/8"	5-1/2"	15.5#, K-55STC	4750'	2600	Cem. must circ

Surface Casing : 400 Sxs. Class "C" W/2% CaCl<sub>2</sub> (14.8 ppg, 1.32 Ft<sup>3</sup>/sx)

Intermediate Casing: 800 Sxs. Class "C" W/2% CaCl<sub>2</sub> (14.8 ppg, 1.32 ft<sup>3</sup>/sx)

Production Casing : 2400 Sxs. Lite Weight W/15# Salt, 1/4# Flocele/Sx.  
(12.54 ppg, 1.83 ft<sup>3</sup>/sx) followed by 200 Sxs. Class  
"C" W/8# salt, 1/4# Flocele/sx (14.44 ppg, 1.38  
ft<sup>3</sup>/sx).

APPROVAL VALID  
FOR 90 DAYS UNLESS  
DRILLING COMMENCED,

EXPIRES 2/5/81

IN ABOVE SPACE DESCRIBE PROPOSED PROGRAM IF EXISTING AT PRODUCTION ZONE, GIVE BLOWOUT PREVENTER PROGRAM, IF ANY.

I hereby certify that the information above is true and complete.

Signed *John W. Moore*

Assistant Division  
Petroleum Engineer

10-31-80

(This space for State Use)

APPROVED BY *Samuel S. S. S.*

SUPERVISOR

CONDITIONS OF APPROVAL, IF ANY:

DATE

NT MEXICO OIL CONSERVATION COMMISSION  
WELL LOCATION AND ACREAGE DEDICATION PLAT

Form C-102  
Supersedes C-128  
Effective 1-1-65

Texaco  
Lease No. 230410

All distances must be from the outer boundaries of the Section.

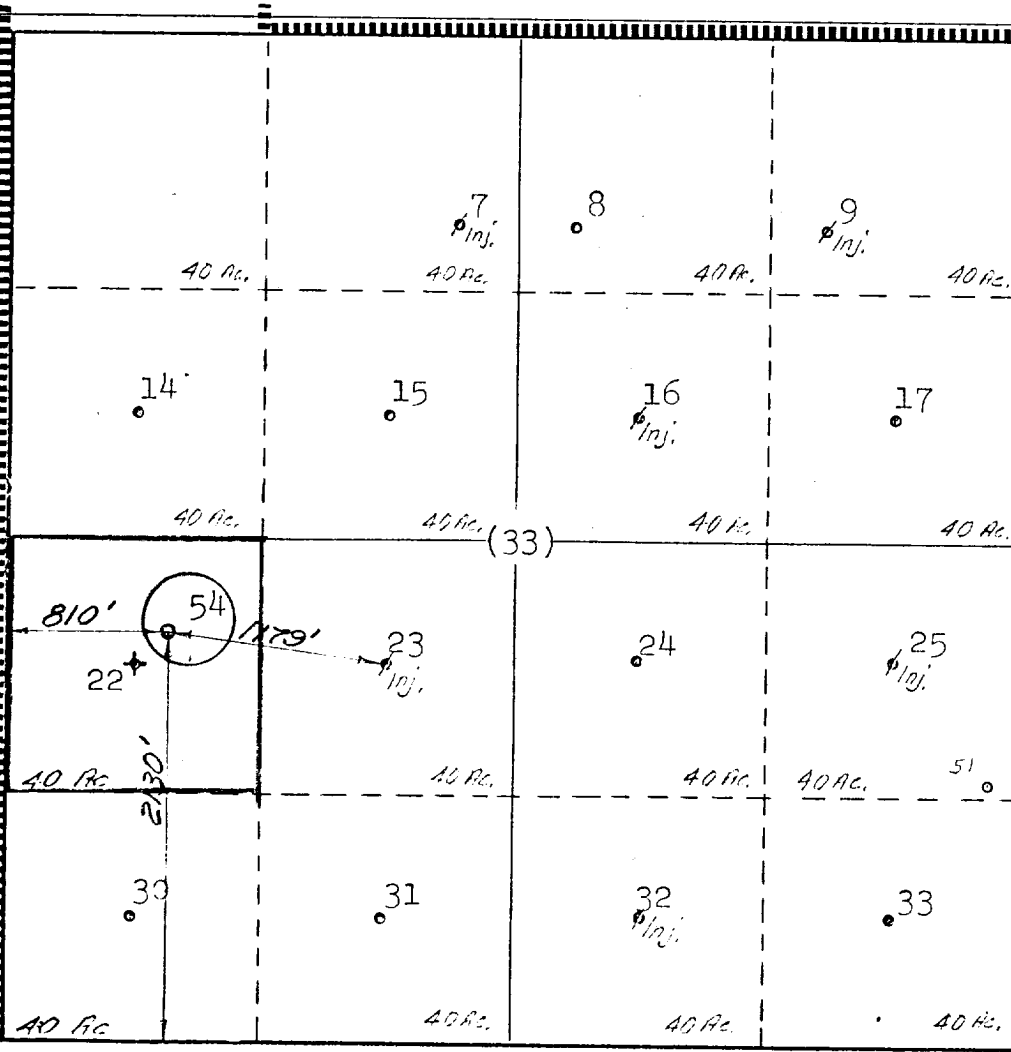
Operator <b>Texaco Inc.</b>			Lease <b>West Vacuum Unit</b>		Well No. <b>54</b>
Unit Letter <b>L</b>	Section <b>33</b>	Township <b>17-S</b>	Range <b>34-E</b>	County <b>Lea</b>	
Actual Footage Location of Well: <b>2130</b> feet from the <b>south</b> line and <b>810</b> feet from the <b>west</b> line					
Ground Level Elev. <b>4047'</b>	Producing Formation <b>Grayburg-San Andres</b>		Pool <b>Vacuum</b> <b>Grayburg-San Andres</b>		Dedicated Acreage: <b>40</b> Acres

1. Outline the acreage dedicated to the subject well by colored pencil or hachure marks on the plat below.
2. If more than one lease is dedicated to the well, outline each and identify the ownership thereof (both as to working interest and royalty).
3. If more than one lease of different ownership is dedicated to the well, have the interests of all owners been consolidated by communitization, unitization, force-pooling, etc?

☒ Yes ☐ No If answer is "yes," type of consolidation Unitization

If answer is "no," list the owners and tract descriptions which have actually been consolidated. (Use reverse side of this form if necessary.)

No allowable will be assigned to the well until all interests have been consolidated (by communitization, unitization, forced-pooling, or otherwise) or until a non-standard unit, eliminating such interests, has been approved by the Commission.



CERTIFICATION

I hereby certify that the information contained herein is true and complete to the best of my knowledge and belief.

Name  
**Phillip Ryan**

Position  
**Engineering Assistant**

Company  
**Texaco Inc.**

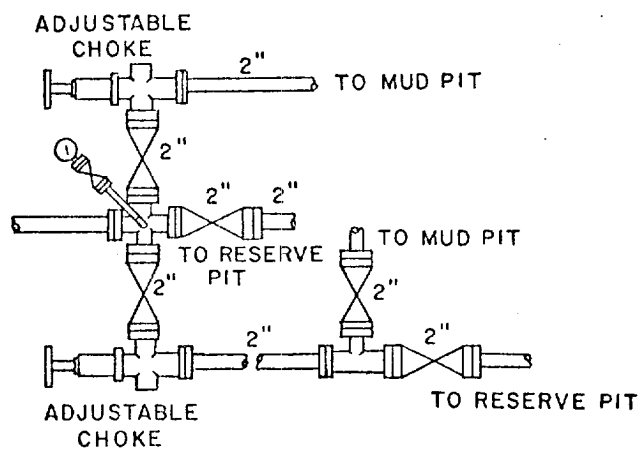
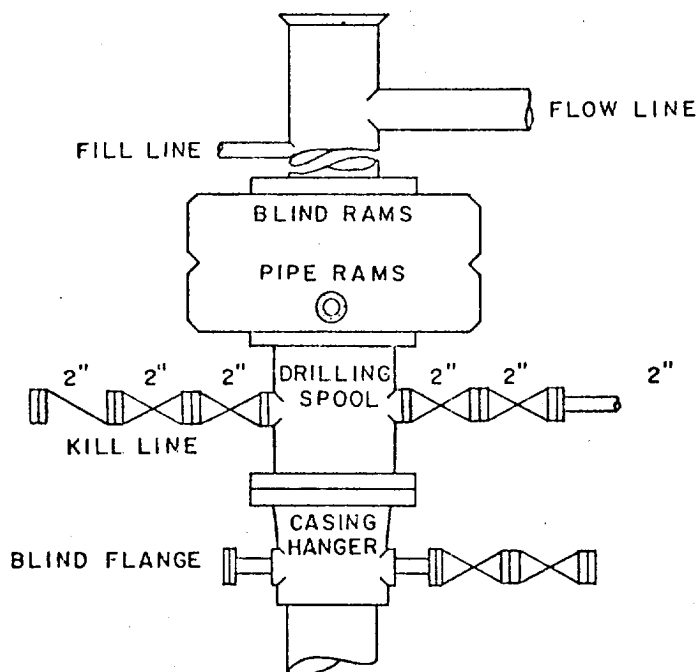
Date  
**10-31-80**

I hereby certify that the well location shown on this plat was plotted from field notes of actual surveys made by me or under my supervision, and that the same is true and correct to the best of my knowledge and belief.

Date Surveyed

Registered Professional Engineer  
and/or Land Surveyor

Certificate No.



TEXACO, INC.  
PRODUCING DEPARTMENT-U.S. (EAST)  
MIDLAND, TEXAS



EXHIBIT "B"

SCALE: NONE	DATE	EST. NO.	DRG. NO.
DRAWN BY JWD			
CHECKED BY RDW			
APPROVED BY			

RECEIVED

NOV 4 1980

OIL CONSERVATION DIV.

173