

STATE OF NEW MEXICO  
ENERGY AND MINERALS DEPARTMENT

L CONSERVATION DIVISION  
P. O. BOX 2088  
SANTA FE, NEW MEXICO 87501

20-025-21337

Form C-101  
Revised 10-1-78

NO. OF COPIES RECEIVED	
DISTRIBUTION	
SANTA FE	
FILE	
U.S.G.S.	
LAND OFFICE	
OPERATOR	

5A. Indicate Type of Lease  
STATE ☒ FEDERAL ☐

5. State Oil & Gas Lease No.  
B-1398-24

APPLICATION FOR PERMIT TO DRILL, DEEPEN, OR PLUG BACK

1a. Type of Work  
DRILL ☒ DEEPEN ☐ PLUG BACK ☐

b. Type of Well  
OIL WELL ☐ GAS WELL ☐ OTHER ☐ water injection SINGLE ZONE ☒ MULTIPLE ZONE ☐

2. Name of Operator  
Phillips Petroleum Company

3. Address of Operator  
Room 401, 4001 Penbrook, Odessa, Texas 79762

4. Location of Well  
UNIT LETTER I LOCATED 2600 FEET FROM THE south LINE  
AND 200 FEET FROM THE east LINE OF SEC. 19 TWP. 17-S RGE. 35-E NEEDM

7. Unit Agreement Name  
East Vacuum Gb/SA Unit

8. Form or Lease Name  
East Vacuum Gb/SA Unit, Tract 1912

9. Well No.  
004

10. Field and Pool, or Wildcat  
Vacuum Gb/SA

12. County  
Lea

19. Proposed Depth  
4800'

19A. Formation  
Gb/SA

20. Rotary or C.T.  
Rotary

21. Elevations (show whether Dr, KI, etc.)  
3977.0 (unprepared)

21A. Kind & Status Plug. Bond  
blanket

21B. Drilling Contractor  
Advise later

22. Approx. Date Work will start  
Upon approval

23. PROPOSED CASING AND CEMENT PROGRAM

SIZE OF HOLE	SIZE OF CASING	WEIGHT PER FOOT	SETTING DEPTH	SACKS OF CEMENT	EST. TOP
12-1/4"	8-5/8"	24#, K-55	350' (Sufficient quantity of C1 "C" w/2% CaCl (& 1/4# Flocele/sx in 1st 150/sx circ surface).		
7-7/8"	4-1/2"	11.6#, N-80	4800' (Suff. TELW w/12# salt/sx w/10% DD and (1/4#/sx Flocele plus 3# Gilsonite/sx followed (by 300 sxs C1 "C" cement w/8# salt/sx to circ (surface).		

(This well is in the same proration unit as Well No. 002.)

Administrative approval, provided by Special Order R-5897, of unorthodox location has been requested by separate letter.

Use mud additives as Required for Control.

BOP: Series 900, 3000# WP, double w/one set pipe rams and one set blind rams.

NSL-1349  
J. J. Miller

180  
10/9/81

IN ABOVE SPACE DESCRIBE PROPOSED PROGRAM; IF PROPOSAL IS TO DEEPEN OR PLUG BACK, GIVE DATA ON PRESENT PRODUCTIVE ZONE AND PROPOSED NEW PRODUCTIVE ZONE. GIVE BLOWOUT PREVENTER PROGRAM, IF ANY.

I hereby certify that the information above is true and complete to the best of my knowledge and belief.

Signed W. J. Mueller Title Senior Engineering Specialist Date 3/30/81  
(This space for State Use)

APPROVED BY [Signature] TITLE SUPERVISOR DATE [Signature]  
CONDITIONS OF APPROVAL, IF ANY:

**NEW MEXICO OIL CONSERVATION COMMISSION**  
**WELL LOCATION AND ACREAGE DEDICATION PLAT**

Form C-102  
 Supersedes C-128  
 Effective 1-1-65

All distances must be from the outer boundaries of the Section.

Operator <b>Phillips Petroleum Co.</b>			Lease <b>EVGSAU</b>		Tract 1912	Well No. <b>004</b>
Unit Letter <b>I</b>	Section <b>19</b>	Township <b>17 South</b>	Range <b>35 East</b>	County <b>Lea</b>		

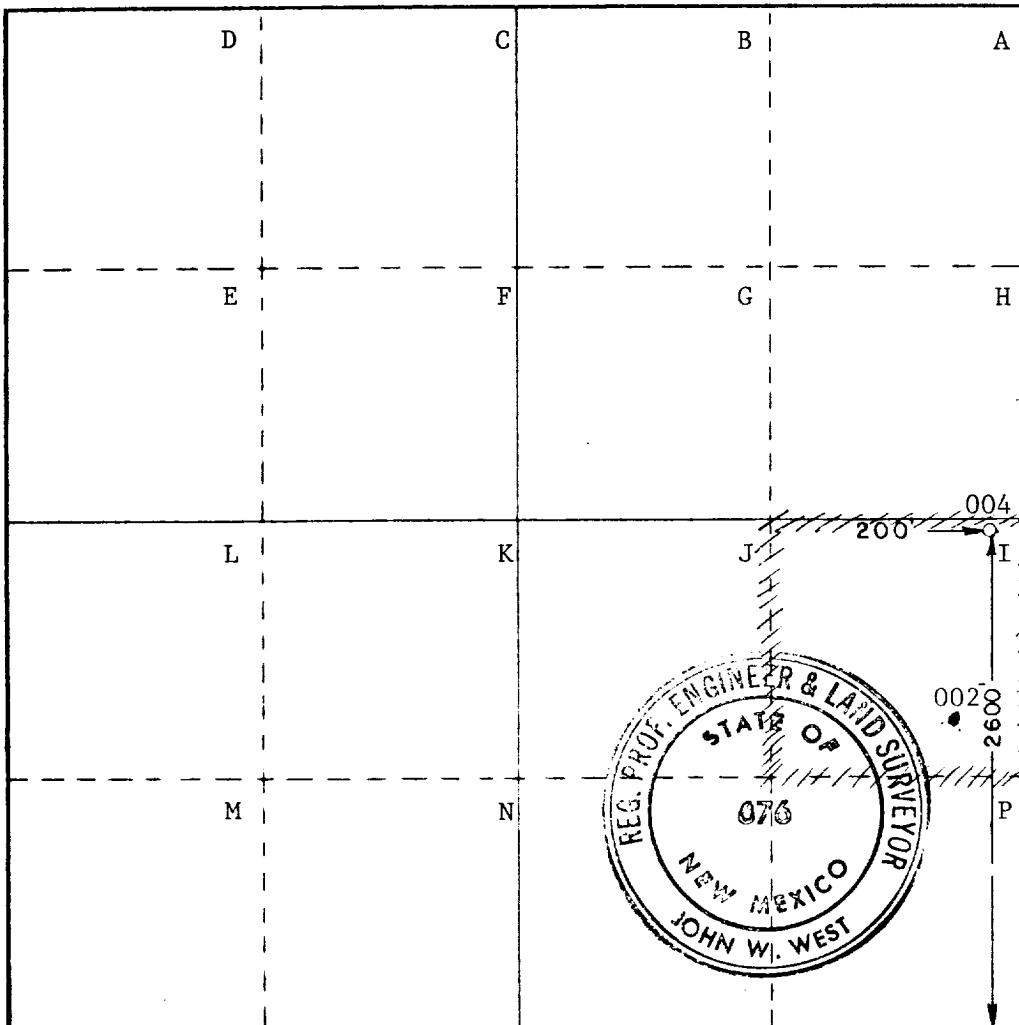
Actual Footage Location of Well: <b>2600</b> feet from the <b>South</b> line and <b>200</b> feet from the <b>East</b> line			
Ground Level Elev. <b>3977.0 (unprepared)</b>	Producing Formation <b>Grayburg/San Andres</b>	Pool <b>Vacuum Gb/San Andres</b>	Dedicated Acreage: <b>water injection</b> Acres

1. Outline the acreage dedicated to the subject well by colored pencil or hachure marks on the plat below.
2. If more than one lease is dedicated to the well, outline each and identify the ownership thereof (both as to working interest and royalty).
3. If more than one lease of different ownership is dedicated to the well, have the interests of all owners been consolidated by communitization, unitization, force-pooling, etc?

☐ Yes    ☐ No    If answer is "yes," type of consolidation \_\_\_\_\_

If answer is "no," list the owners and tract descriptions which have actually been consolidated: (Use reverse side of this form if necessary.) \_\_\_\_\_

No allowable will be assigned to the well until all interests have been consolidated (by communitization, unitization, forced-pooling, or otherwise) or until a non-standard unit, eliminating such interests, has been approved by the Commission.



**CERTIFICATION**

I hereby certify that the information contained herein is true and complete to the best of my knowledge and belief.

*[Signature]*  
**W. J. Mueller**  
 Sr. Engineering Specialist  
 Position  
 Phillips Petroleum Company  
 Company

Date  
**3/30/81**

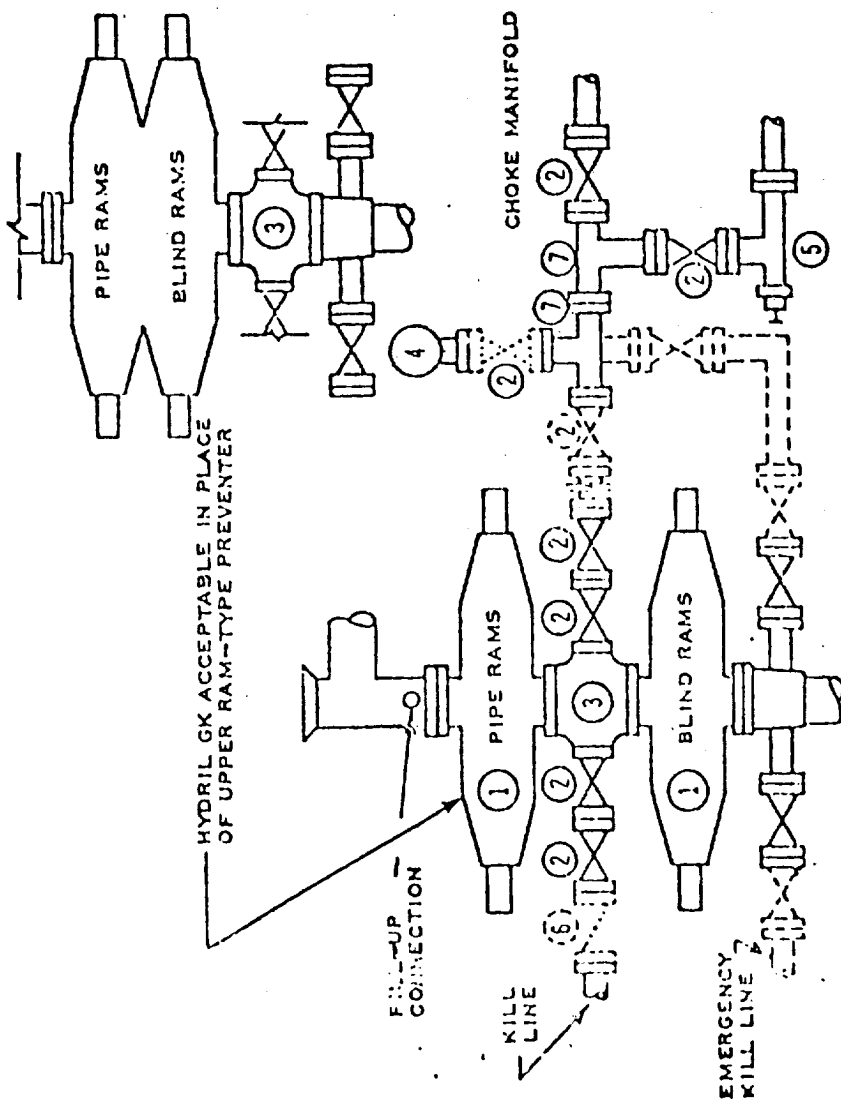
I hereby certify that the well location shown on this plat was plotted from field notes of actual surveys made by me or under my supervision, and that the same is true and correct to the best of my knowledge and belief.

Date Surveyed  
**3-5-81**

Registered Professional Engineer  
 and/or Land Surveyor

*[Signature]*  
 Certificate No. **JOHN W. WEST 076**  
**PATRICK A. ROMERO 6463**  
**Ronald J. Eidson 3239**

# DOUBLE PREVENTER OPTION



- ① SERIES 900 RAM-TYPE BOP
- ② 2" SERIES 900 VALVE
- ③ SERIES 900 DRILLING SPOOL
- ④ 2" MUD PRESSURE GAUGE
- ⑤ 2" SERIES 900 CHOKE
- ⑥ 2" SERIES 900 CHECK VALVE
- ⑦ 2" SERIES 900 STEEL TEE

## NOTES:

1. 3000 PSI WP CLAMP HUSSES MAY BE SUBSTITUTED FOR FLANGES
2. VALVES MAY BE EITHER HAND OR POWER OPERATED BUT, IF POWER OPERATED, THE VALVES FLANGED TO THE BOP RUN MUST BE CAPABLE OF BEING OPENED AND CLOSED MANUALLY OR CLOSE ON POWER FAILURE AND BE CAPABLE OF BEING OPENED MANUALLY

..... OPTIONAL EQUIPMENT

PHILLIPS PETROLEUM COMPANY

3000 PSI WORKING PRESSURE  
BLOWOUT PREVENTER HOOK-UP  
(SERIES 900 FLANGES OR BETTER)

REV 6/73

FIGURE NO. 7

RECEIVED

APR 1 1981

OIL CONSERVATION DIV.

143