

STATE OF NEW MEXICO
ENERGY AND MINERALS DEPARTMENT

OIL CONSERVATION DIVISION

Form C-101
Revised 10-1-78

NO. OF COPIES RECEIVED	
DISTRIBUTION	
SANTA FE	
FILE	
U.S.G.S.	
LAND OFFICE	
OPERATION	

P. O. BOX 2088
SANTA FE, NEW MEXICO 87501

API# 30-025-27422

5A. Indicate Type of Lease
STATE ☒ FEE ☐

5. State Oil & Gas Lease No.
E-7259

APPLICATION FOR PERMIT TO DRILL, DEEPEN, OR PLUG BACK

1a. Type of Work DRILL <input checked="" type="checkbox"/> DEEPEN <input type="checkbox"/> PLUG BACK <input type="checkbox"/>		7. Unit Agreement Name East Vacuum Gb/SA Unit	
b. Type of Well OIL WELL <input checked="" type="checkbox"/> GAS WELL <input type="checkbox"/> OTHER <input type="checkbox"/>		8. Farm or Lease Name East Vacuum Gb/SA Unit Tr1978	
2. Name of Operator Phillips Petroleum Company		9. Well No. 003	
3. Address of Operator Room 401, 4001 Penbrook, Odessa, Texas 79762		10. Field and Pool, or Wildcat Vacuum Gb/SA	
4. Location of Well UNIT LETTER D LOCATED 990 FEET FROM THE north LINE AND 660 FEET FROM THE west LINE OF SEC. 19 TWP. T-17-S RGE. R-35-E NMDM		12. County Lea	
19. Proposed Depth 4800'		19A. Formation Gb/SA	
20. Rotary or C.T. Rotary		21. Elevations (Show whether DT, KT, etc.) 3996.9 Ground (unprepared)	
21A. Kind & Status Plug. Bond blanket		21B. Drilling Contractor Advise later	
22. Approx. Date Work will start Upon approval			

PROPOSED CASING AND CEMENT PROGRAM

SIZE OF HOLE	SIZE OF CASING	WEIGHT PER FOOT	SETTING DEPTH	SACKS OF CEMENT	EST. TOP
11"	8-5/8"	24# K-55	350' (Sufficient quantity of	Cl H w/2% CaCl	
			(& 1/4# Floccle/sx in 1st 150/sxs) circ surf		
7 7/8"	5-1/2"	17# K-55	4800' (Suff. TRLW w/12# salt/sx w/10% DD and		
			(1/4#/sx Floccle plus 3# Gilsonite/sx followed		
			(by 260 sxs Cl H cement w/8# salt/sx to circ.		
			(surface).		

(This well is in the same proration unit as well(s) No. 002)
Use mud additives as Required for Control.

BOP: Series 900, 3000# WP, double w/one set pipe rams and one set blind rams.

APPROVAL VALID FOR 180 DAYS
PERMIT EXPIRES 11/18/81
UNLESS DRILLING UNDERWAY

IN ABOVE SPACE DESCRIBE PROPOSED PROGRAM; IF PROPOSAL IS TO DEEPEN OR PLUG BACK, GIVE DATA ON PRESENT PRODUCTIVE ZONE AND PROPOSED NEW PRODUCTIVE ZONE. GIVE BLOWOUT PREVENTER PROGRAM, IF ANY.

I hereby certify that the information above is true and complete to the best of my knowledge and belief.

Signed W. J. Mueller Title Sr. Engineering Specialist Date 5-13-81

(This space for State Use)

APPROVED BY [Signature] TITLE SUPERVISOR DISTRICT DATE 5-13-81
CONDITIONS OF APPROVAL, IF ANY:

**NEW MEXICO OIL CONSERVATION COMMISSION
WELL LOCATION AND ACREAGE DEDICATION PLAT**

Form C-102
Supersedes C-128
Effective 1-1-65

All distances must be from the outer boundaries of the Section.

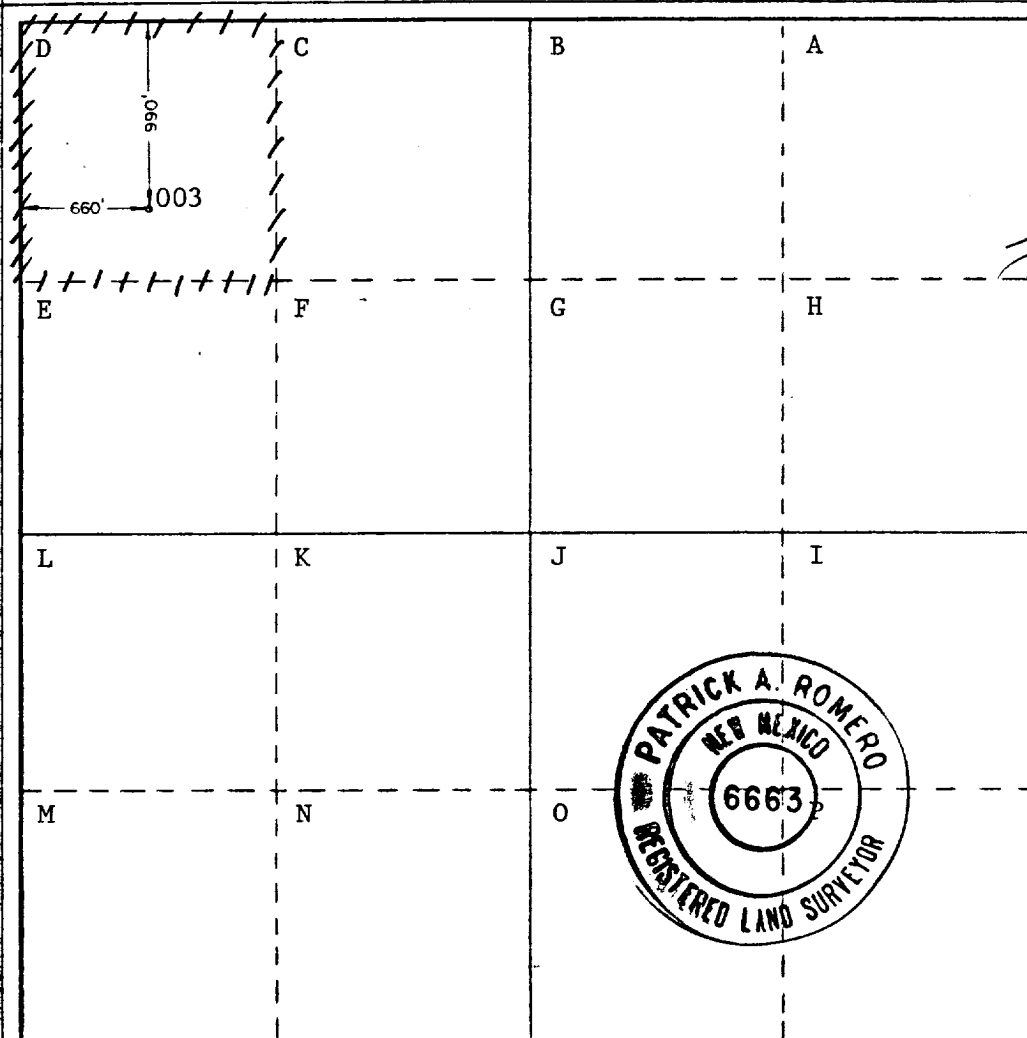
Operator PHILLIPS PETROLEUM COMPANY			Lease East Vacuum Gb/SA Unit Tract 1978		Well No. 003
Unit Letter D	Section 19	Township 17 SOUTH	Range 35 EAST	County LEA	
Actual Footage Location of Well: 990 feet from the NORTH line and 660 feet from the WEST line					
Ground Level Elev. 3996.9 (unprepared)	Producing Formation Grayburg/San Andres		Pool Vacuum Gb/SA	Dedicated Acreage: 40 37.66 Acres	

1. Outline the acreage dedicated to the subject well by colored pencil or hatchure marks on the plat below.
2. If more than one lease is dedicated to the well, outline each and identify the ownership thereof (both as to working interest and royalty).
3. If more than one lease of different ownership is dedicated to the well, have the interests of all owners been consolidated by communitization, unitization, force-pooling, etc?

☐ Yes ☐ No If answer is "yes," type of consolidation _____

If answer is "no," list the owners and tract descriptions which have actually been consolidated. (Use reverse side of this form if necessary.) _____

No allowable will be assigned to the well until all interests have been consolidated (by communitization, unitization, forced-pooling, or otherwise) or until a non-standard unit, eliminating such interests, has been approved by the Commission.



CERTIFICATION

I hereby certify that the information contained herein is true and complete to the best of my knowledge and belief.

Name

W. J. Mueller

Position

Sr. Engineering Specialist

Company

Phillips Petroleum Company

Date

5-13-81

I hereby certify that the well location shown on this plat was plotted from field notes of actual surveys made by me or under my supervision, and that the same is true and correct to the best of my knowledge and belief.

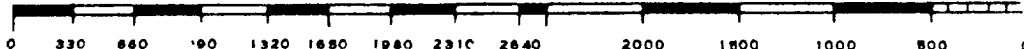
Date Surveyed

April 29, 1981

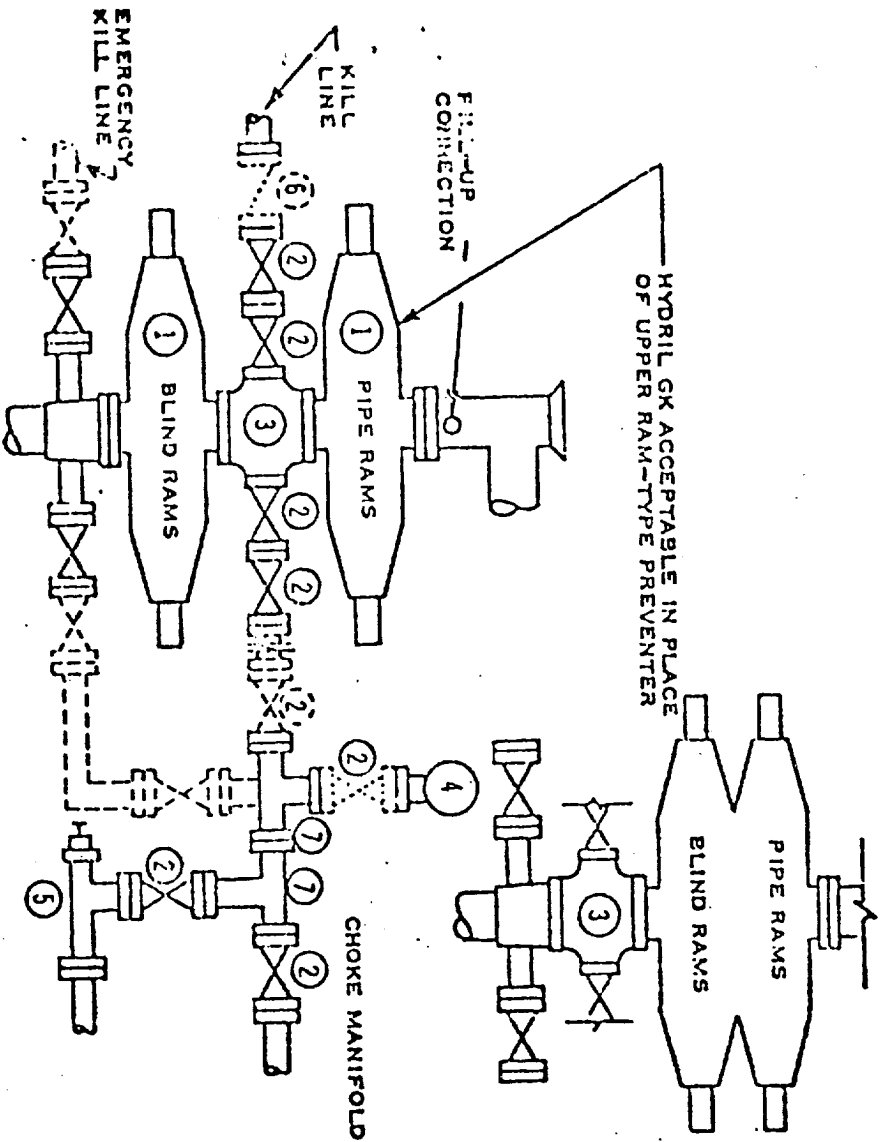
Registered Professional Engineer
and/or Land Surveyor

Patrick A. Romero

Certificate No. **JOHN W. WEST 676**
PATRICK A. ROMERO 6663
Ronald J. Eidson 3239



DOUBLE PREVENTER OPTION



- ① SERIES 900 RAM-TYPE BOP
- ② 2" SERIES 900 VALVE
- ③ SERIES 900 DRILLING SPOOL
- ④ 2" MUD PRESSURE GAUGE
- ⑤ 2" SERIES 900 CHOKE
- ⑥ 2" SERIES 900 CHECK VALVE
- ⑦ 2" SERIES 900 STEEL TEE

NOTES:

1. 3000 PSI WP CLAMP HUGS MAY BE SUBSTITUTED FOR FLANGES
2. VALVES MAY BE EITHER HAND OR POWER OPERATED BUT, IF POWER OPERATED, THE VALVES FLANGED TO THE BOP RUN MUST BE CAPABLE OF BEING OPENED AND CLOSED MANUALLY OR CLOSE ON POWER FAILURE AND BE CAPABLE OF BEING OPENED MANUALLY

..... OPTIONAL EQUIPMENT

PHILLIPS PETROLEUM COMPANY
3000 PSI WORKING PRESSURE
BLOWOUT PREVENTER HOOK-U
(SERIES 900 FLANGES OR BETTE

RECEIVED

MAY 15 1981

OIL CONSERVATION DIV.

473