

STATE OF NEW MEXICO
ENERGY AND MINERALS DEPARTMENT

OIL CONSERVATION DIVISION

P. O. BOX 2088
SANTA FE, NEW MEXICO 87501

Form C-101
Revised 10-1-78

NO. OF COPIES RECEIVED	
DISTRIBUTION	
SANTA FE	
FILE	
U.S.G.S.	
LAND OFFICE	
OPERATOR	

5A. Indicate Type of Lease
STATE ☒ FEE ☐

5. State Oil & Gas Lease No.
B-2073

APPLICATION FOR PERMIT TO DRILL, DEEPEN, OR PLUG BACK

1a. Type of Work

1b. Type of Well

DRILL ☒

DEEPEN ☐

PLUG BACK ☐

OIL WELL ☒

GAS WELL ☐

OTHER

SINGLE ZONE ☒

MULTIPLE ZONE ☐

2. Name of Operator

Phillips Petroleum Company

3. Address of Operator

Room 401, 4001 Penbrook, Odessa, Texas 79762

4. Location of Well

UNIT LETTER B LOCATED 910 FEET FROM THE north LINE

AND 1980 FEET FROM THE east LINE OF SEC. 29 TWP. T-17-S RGC. R-35-E NMDM

7. Unit Agreement Name

East Vacuum Gb/SA Unit

8. Farm or Lease Name

East Vacuum Gb/SA Unit Tract 2944

9. Well No.

003

10. Field and Pool, or Wildcat

Vacuum Gb/SA

12. County

Lea

19. Proposed Depth

4800'

19A. Formation

Gb/SA

20. Rotary or C.T.

Rotary

21. Elevations (show whether DE, RT, etc.)

3958.9' Ground (unprepared)

21A. Kind & Status Plug. Bond

blanket

21B. Drilling Contractor

Advise later

22. Approx. Date Work will start

Upon approval

23.

PROPOSED CASING AND CEMENT PROGRAM

SIZE OF HOLE	SIZE OF CASING	WEIGHT PER FOOT	SETTING DEPTH	SACKS OF CEMENT	EST. TOP
11"	8-5/8"	24#, K-55	350 (Suff. quantity of C1 H w/2% CaCl & (1/4# Flocele/sx in 1st 150/sxs). Circ surf.		
7-7/8"	5-1/2"	17#, K-55	4800' (Suff. TRLW w/12# salt/sx w/10% DD and (1/4#/sx Flocele plus 3# Gilsonite/sx followed (by 260 sxs C1 H cement w/8# salt/sx to circ (surface).		

(This well is in the same proration unit as well(s) No. 002 & 001)

Use mud additives as Required for Control.

BOP: Series 900, 3000# WP, double w/9ne set pipe rams and one set blind rams.

186
PERMIT NO. 24/18/81
UNLESS DRILLING OTHERWISE

IN ABOVE SPACE DESCRIBE PROPOSED PROGRAM; IF PROPOSAL IS TO DEEPEN OR PLUG BACK, GIVE DATA ON PRESENT PRODUCTIVE ZONE AND PROPOSED NEW PRODUCTIVE ZONE. GIVE BLOWOUT PREVENTER PROGRAM, IF ANY.

I hereby certify that the information above is true and complete to the best of my knowledge and belief.

Signed W. J. Mueller Title Senior Engineering Specialist Date May 13, 1981

(This space for State Use)

APPROVED BY

TITLE

SUPERVISOR DISTRICT

DATE

CONDITIONS OF APPROVAL, IF ANY:

NEW MEXICO OIL CONSERVATION COMMISSION
WELL LOCATION AND ACREAGE DEDICATION PLAT

Form C-102
Supersedes C-128
Effective 1-1-65

All distances must be from the outer boundaries of the Section.

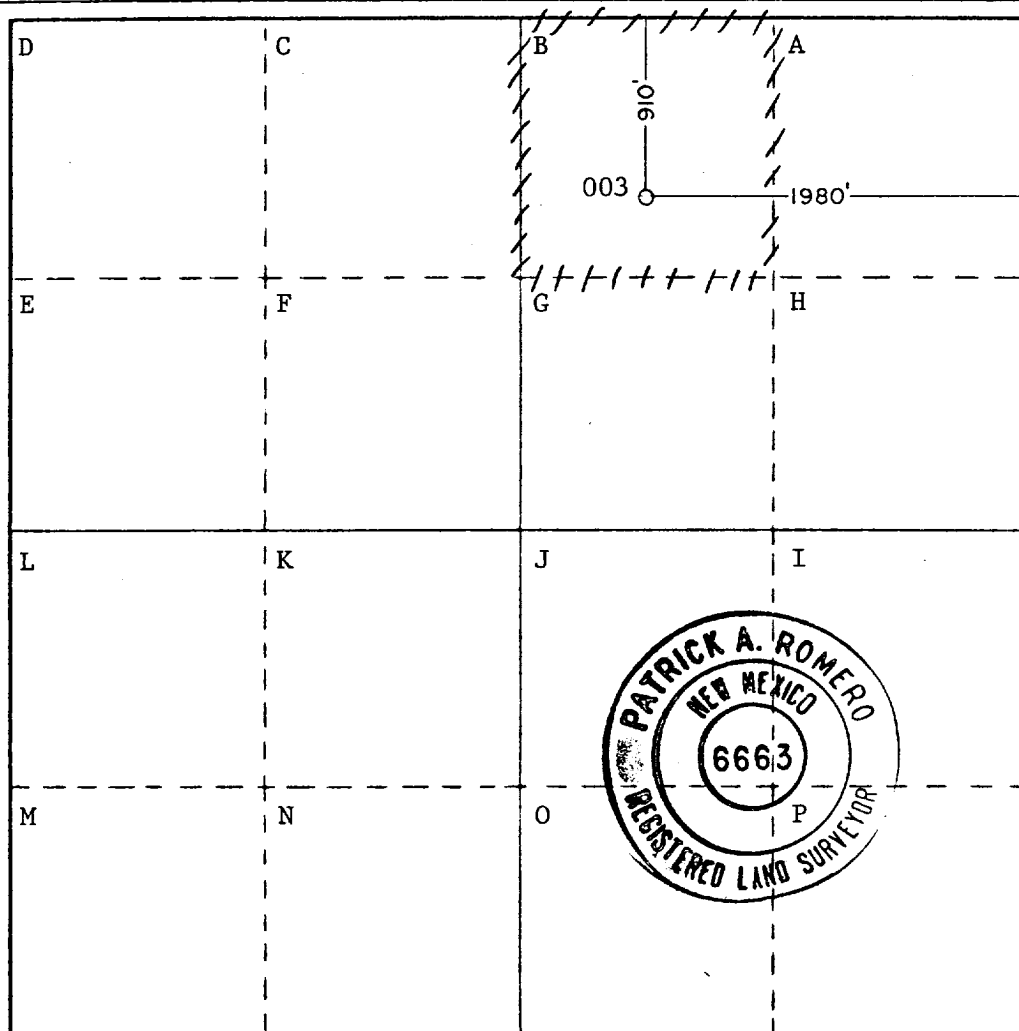
Operator Phillips Petroleum Co.		Lease East Vacuum Gb/SA Unit, Tract 2944		Well No. 003
Unit Letter B	Section 29	Township 17South	Range 35East	County Lea
Actual Footage Location of Well: 1980 feet from the East line and 910 feet from the North line				
Ground Level Elev. 3958.9'	Producing Formation (unprepared) Grayburg/San Andres		Pool Vacuum Gb/SA	Dedicated Acreage: 40 Acres

1. Outline the acreage dedicated to the subject well by colored pencil or hatchure marks on the plat below.
2. If more than one lease is dedicated to the well, outline each and identify the ownership thereof (both as to working interest and royalty).
3. If more than one lease of different ownership is dedicated to the well, have the interests of all owners been consolidated by communitization, unitization, force-pooling, etc?

☐ Yes ☐ No If answer is "yes," type of consolidation _____

If answer is "no," list the owners and tract descriptions which have actually been consolidated. (Use reverse side of this form if necessary.) _____

No allowable will be assigned to the well until all interests have been consolidated (by communitization, unitization, forced-pooling, or otherwise) or until a non-standard unit, eliminating such interests, has been approved by the Commission.



CERTIFICATION

I hereby certify that the information contained herein is true and complete to the best of my knowledge and belief.

Name
W. J. Mueller

Position
Sr. Engineering Specialist

Company
Phillips Petroleum Company

Date
May 13, 1981

I hereby certify that the well location shown on this plat was plotted from field notes of actual surveys made by me or under my supervision, and that the same is true and correct to the best of my knowledge and belief.

Date Surveyed
May 1, 1981

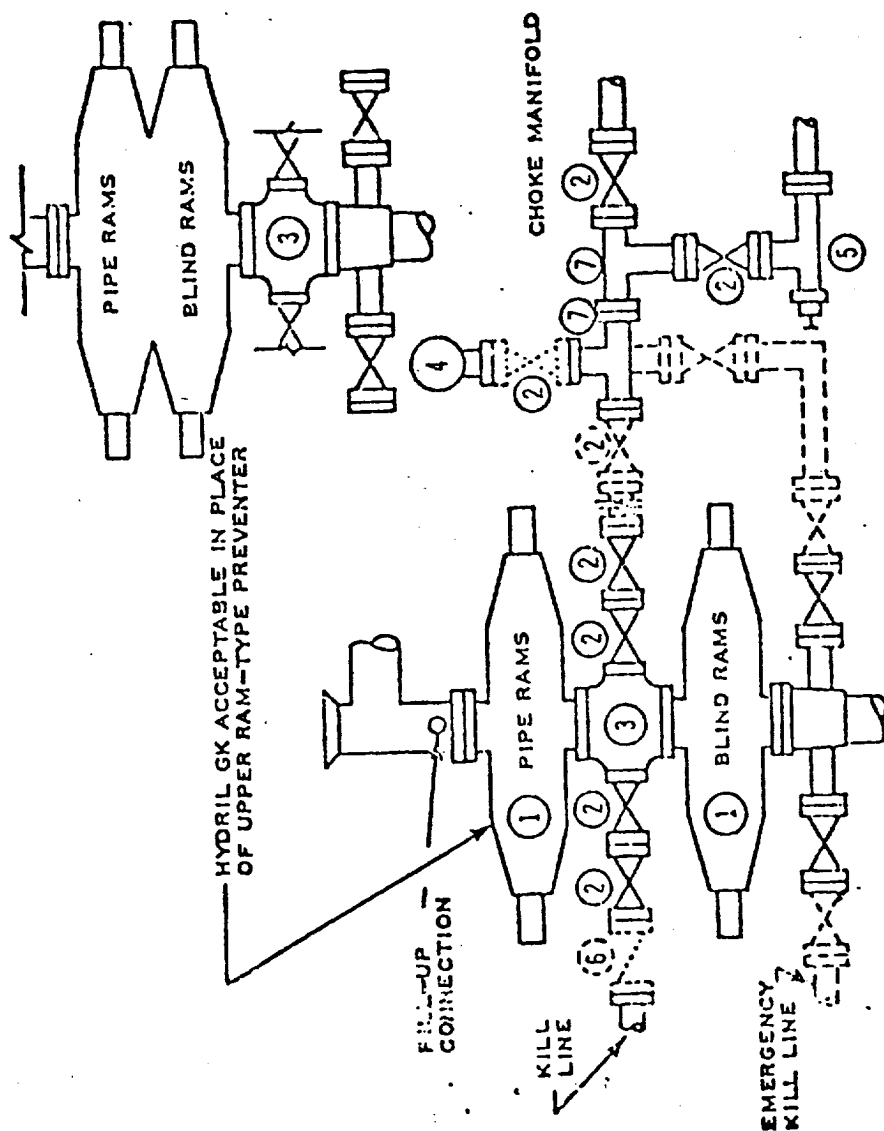
Registered Professional Engineer and/or Land Surveyor

Patrick A. Romero

Certificate No. **JOHN W. WEST 676**
PATRICK A. ROMERO 6663
Ronald J. Eidson 3239

0 330 660 990 1320 1650 1980 2310 2640 2970 3300 3630 3960 4290 4620 4950 5280 5610 5940 6270 6600

DOUBLE PREVENTER OPTION



- ① SERIES 900 RAM-TYPE BOP
- ② 2" SERIES 900 VALVE
- ③ SERIES 900 DRILLING SPOOL
- ④ 2" MUD PRESSURE GAUGE
- ⑤ 2" SERIES 900 CHOKE
- ⑥ 2" SERIES 900 CHECK VALVE
- ⑦ 2" SERIES 900 STEEL TEE

NOTES:

1. 3000 PSI WP CLAMP HUBS MAY BE SUBSTITUTED FOR FLANGES
2. VALVES MAY BE EITHER HAND OR POWER OPERATED BUT, IF POWER OPERATED, THE VALVES FLANGED TO THE BOP RUN MUST BE CAPABLE OF BEING OPENED AND CLOSED MANUALLY OR CLOSE ON POWER FAILURE AND BE CAPABLE OF BEING OPENED MANUALLY

..... OPTIONAL EQUIPMENT

PHILLIPS PETROLEUM COMPANY

3000 PSI WORKING PRESSURE
BLOWOUT PREVENTER HOOK-UP
(SERIES 900 FLANGES OR BETTER)

473

RECEIVED

MAY 15 1961

OIL CONSERVATION DIV.