

20-025-27535

NO. OF COPIES MADE

DISTRIBUTION

ANTHONY

FILE

NO. 374

AND OFFICE

PERATOR

## NEW MEXICO OIL CONSERVATION COMMISSION

## APPLICATION FOR PERMIT TO DRILL, DEEPEN, OR PLUG BACK

Type of Well

DRILL ☒DEEPEN ☐PLUG BACK ☐

Type of Area

☒

Harvey E. Yates Company

P. O. Box 1933, Roswell New Mexico 88201

A

660'

North

860'

East

9

18S

32E

Young Deep Unit

S

N. Young Bone Springs

INDICATED

Lea

9650

Bone Springs

Rotary

3844.3 GL

50,000 Blanket

Moranco

1-10-81

## PROPOSED CASING AND CEMENT PROGRAM

SIZE OF HOLE	SIZE OF CASING	WEIGHT PER FOOT	SET IN FEET	SACKS OF CEMENT	EST. TOP
17 1/2	13 3/8	48#	650	750 sxs	Circulate
11	8 5/8	24# - 28#	4650	2600 sxs	Circulate
7 7/8	4 1/2	10.5# - 11.6#	9650	700 sxs	Sufficient to cover 600' above payzone

Gas is dedicated to Phillips Petroleum Company.

Federal  
Shelley  
Payzone120  
8/20/82

ABOVE SPACE IS TO BE USED FOR A PROGRAM OF PRODUCTION TO DEEPEN OR PLUG BACK IN PROTECTIVE ZONE AND WHERE NEW PRODUCTION ZONE IS TO BE DEVELOPED.

I hereby certify that the information furnished is true and complete to the best of my knowledge and belief.

Signed

Paul J. Fardou

Engineer

Date August 17, 1981

APPROVED BY

UNITED STATES OF AMERICA

NEW MEXICO OIL CONSERVATION COMMISSION  
WELL LOCATION AND ACREAGE DEDICATION PLAT

Form C-102  
Supersedes C-128  
Effective 1-1-85

All distances must be from the outer boundaries of the Section

Operator <b>HARVEY YATES COMPANY</b>		Lease <b>YOUNG DEEP UNIT</b>		Well No. <b>8</b>
Plot Letter <b>A</b>	Section <b>9</b>	Township <b>18 South</b>	Range <b>32 East</b>	County <b>Lea</b>
Actual Footage Location of Well: <b>660</b> feet from the <b>North</b> line and <b>860</b> feet from the <b>East</b> line				
Ground Level Elev. <b>3844.3</b>	Producing Formation <b>Bone Spring</b>	Pool <b>N. Young Bone Spring</b>	Dedicated Acreage: <b>40</b>	

1. Outline the acreage dedicated to the subject well by colored pencil or hatchure marks on the plat below.
2. If more than one lease is dedicated to the well, outline each and identify the ownership thereof (both as to working interest and royalty).
3. If more than one lease of different ownership is dedicated to the well, have the interests of all owners been consolidated by communitization, unitization, force-pooling, etc?

☒ Yes ☐ No If answer is "yes," type of consolidation Unitization

If answer is "no," list the owners and tract descriptions which have actually been consolidated. (Use reverse side of this form if necessary.) \_\_\_\_\_

No allowable will be assigned to the well until all interests have been consolidated (by communitization, unitization, forced-pooling, or otherwise) or until a non-standard unit, eliminating such interests, has been approved by the Commission.

LC-064009-d 660' 860' Galaxy Oil Co. 1/2 Gulf Oil Corp 1/4 Charles worth 1/4 Estate USA	

CERTIFICATION

I hereby certify that the information contained herein is true and complete to the best of my knowledge and belief.

*Peck Hardee*

Name

**Peck Hardee**

Position

**Engineer**

Company

**Harvey E. Yates Company**

Date

**August 17, 1981**

I hereby certify that the well location shown on this plat was plotted from field notes of actual surveys made by me or under my supervision, and that the same is true and correct to the best of my knowledge and belief.

Date Surveyed

**8/10/81**

Registered Professional Engineer and/or Land Surveyor

*John W. West*

Certificate No. **JOHN W. WEST 676**  
**PATRICK A. ROMERO 6863**  
**Ronald J. Eidson 3239**

0 330 660 990 1320 1650 1980 2310 2640 2970 3300 3630 3960 4290 4620 4950 5280 5610 5940 6270 6600

## DRAWWORKS

Brewster N-7-2W

Drum: 1-1/8" Lebus grooved

Compound: 2-engine oil bath chain drive

Brake: Hydromatic Parkersburg 40" Single

## ENGINES

Two 410-H.P. D353TA Caterpillar Diesel.

## DERRICK

Lee C. Moore, 127', 440,000 lb. nominal capacity.

## SUBSTRUCTURE

Lee C. Moore, 10' high, 440,000 lb. nominal capacity.

## MUD PUMPS

Pump No. 1: Emsco D3700, 700 H.P. with steel fluid end, 4 1/2" - 7 1/2" liners, 16" stroke, Compound-driven.

Pump No. 2: National C-250, powered by D353 Caterpillar diesel.

## DRILL STRING

8400' - 4 1/2" Grade L, 16.60 lb.

3000' - 4 1/2" Grade E, 20 lb.

Tool Joints: 4" H-90, 6" OD

Thirty Drilco spiral-grooved 6 1/2" OD, 2 1/4" ID. With 4" H-90 joints.

Other sized drillpipe & drillcollars available.

## BLOWOUT PREVENTERS

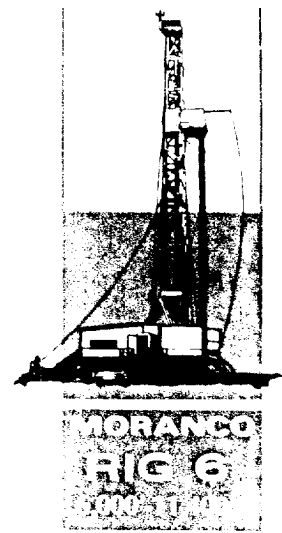
One Shaffer LWS hydraulic double 10" x 900 series One Hydril 10" x 900 series.

Choke manifold 4" x 900 series flanged connections.

Payne 4 valve accumulator closing unit.

## MUD SYSTEM

3 - 30 x 7 1/2 x 6 steel pits, with 700 Bbl. capacity. Complete low pressure circulating system, consisting of four submerged mud guns and two counter sunk jets in each pit. System utilizes a 6 x 8 centrifugal pump, powered by diesel.



## MUD HOUSE

One - 8' x 30' Steel Storage House.

## COMMUNICATIONS

24-Hour direct telephone interconnection through Hobbs (A.C. 505-397-3291) or Midland - Odessa (A.C. 915-563-0562).

## OTHER EQUIPMENT

BLOCKS - McKissick 350 Ton

HOOK - BJ4300 350 Ton

SWIVEL - NAT N47 200 Ton

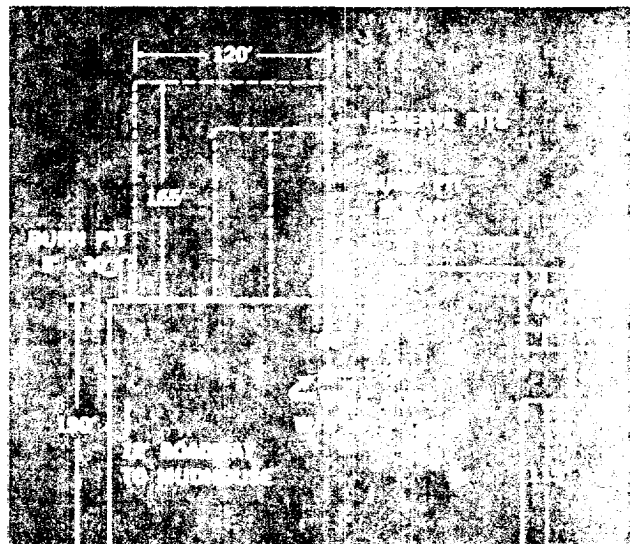
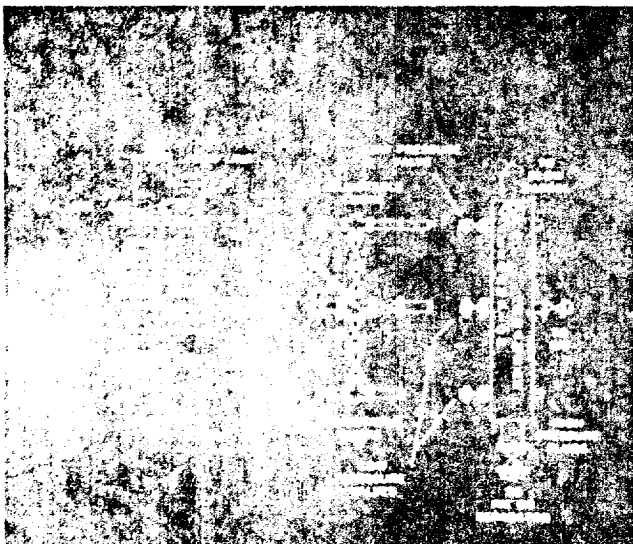
LIGHT PLANTS - Two 15 KW AC generators, powered by diesel engines.

LIGHTS - AC fluorescent or mercury - All vapor proof.

SHALE SHAKER - Link belt, single screen.

FRESH WATER STORAGE - two 500 Bbl., horizontal tanks.

HOUSING - 1 - 8' x 36' airconditioned trailer house, with sleeping and cooking facilities.



88-7-1 7221

171

171