

MEXICO OIL CONSERVATION COMMISSION
WELL LOCATION AND ACREAGE DEDICATION PLAT

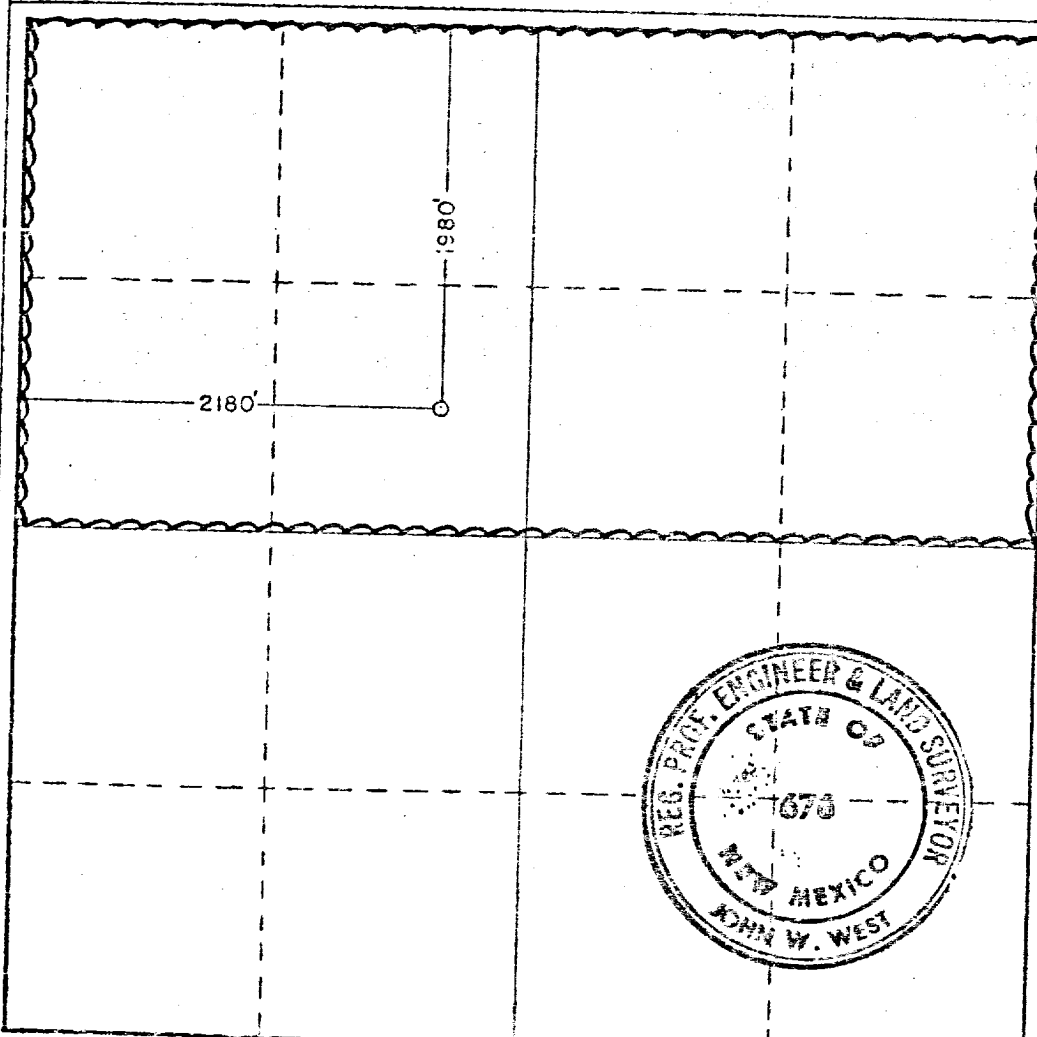
Form C-102
Supersedes C-128
Effective 1-1-65

All distances must be from the outer boundaries of the Section.

Operator AMOCO PRODUCTION COMPANY			Lease RECORD		Well No. 1
Unit Letter F	Section 25	Township 19 SOUTH	Range 35 EAST	County LEA	
Actual Footage Location of Well: 1980 feet from the NORTH line and 2180 feet from the WEST line					
Ground Level Elev. 3676.6	Producing Formation Morrow	Pool North Pearl Morrow		Dedicated Acreage: 320	Acres

- Outline the acreage dedicated to the subject well by colored pencil or hatchure marks on the plat below.
- If more than one lease is dedicated to the well, outline each and identify the ownership thereof (both as to working interest and royalty).
- If more than one lease of different ownership is dedicated to the well, have the interests of all owners been consolidated by communitization, unitization, force-pooling, etc?
☐ Yes ☐ No If answer is "yes," type of consolidation _____

If answer is "no," list the owners and tract descriptions which have actually been consolidated. (Use reverse side of this form if necessary.) _____
No allowable will be assigned to the well until all interests have been consolidated (by communitization, unitization, forced-pooling, or otherwise) or until a non-standard unit, eliminating such interests, has been approved by the Commission.



CERTIFICATION

I hereby certify that the information contained herein is true and complete to the best of my knowledge and belief.

Name
Mark Randolph
Position
Assist. Admin. Analyst
Company
Amoco Production Company
Date
11-3-81

I hereby certify that the well location shown on this plat was plotted from field notes of actual surveys made by me or under my supervision, and that the same is true and correct to the best of my knowledge and belief.

Date Surveyed
10/30/81
Registered Professional Engineer and/or Land Surveyor

John W. West
Certificate No. **JOHN W. WEST 678**
PATRICK A. ROMERO 6663
Ronald J. Eideen 3239

0 230 660 90 1320 1680 1980 2310 2640 2700 1200 1000 800 0