

NO. OF COPIES RECEIVED	
DISTRIBUTION	
SANTA FE	
FILE	
U.S.G.S.	
LAND OFFICE	
OPERATOR	

NEW MEXICO OIL CONSERVATION COMMISSION

30-025-27913

Form C-101
Revised 1-1-65

5A. Indicate Type of Lease	
STATE <input checked="" type="checkbox"/>	FEE <input type="checkbox"/>
5. State Oil & Gas Lease No.	
B-1056-1	

APPLICATION FOR PERMIT TO DRILL, DEEPEN, OR PLUG BACK

1a. Type of Work		7. Unit Agreement Name	
b. Type of Well DRILL <input checked="" type="checkbox"/> DEEPEN <input type="checkbox"/> PLUG BACK <input type="checkbox"/> OIL WELL <input checked="" type="checkbox"/> GAS WELL <input type="checkbox"/> OTHER <input type="checkbox"/> SINGLE ZONE <input checked="" type="checkbox"/> MULTIPLE ZONE <input type="checkbox"/>		8. Farm or Lease Name New Mexico "Q" State	
2. Name of Operator Texaco Inc.		9. Well No. 10	
3. Address of Operator c/o Alan R. McDaniel, P. O. Box 3109, Midland, Tx. 79702		10. Field and Pool, or Wildcat Vacuum Glorieta	
4. Location of Well UNIT LETTER 0 LOCATED 990 FEET FROM THE South LINE AND 2308 FEET FROM THE East LINE OF SEC. 25 TWP. T-17-S RGE. 34-E NMPM		12. County Lea	
13. Proposed Depth 6100		19A. Formation Glorieta	
21. Elevations (Show whether DF, RT, etc.) 3997' GD		20. Rotary or C.T. Rotary	
21A. Kind & Status Plug. Bond		22. Approx. Date Work will start Immediately	

PROPOSED CASING AND CEMENT PROGRAM

SIZE OF HOLE	SIZE OF CASING	WEIGHT PER FOOT	SETTING DEPTH	SACKS OF CEMENT	EST. TOP
20"	16"	65# H-40 STC	35'	20	Circulate
15"	11 3/4"	42# H-40 STC	1575'	2150	Circulate
11"	8 5/8"	24# S-80 STC	4850'	4100	Circulate
		28# S-80 STC			
		32# S-80 STC			
7 7/8"	5 1/2"	15.5# K-55 STC	6100'	1075	Circulate

Conductor Casing: 20 sxs Class "H" w/2% CaCl₂ (15.6 ppg, 1.13 ft³/sx).

Surface Casing: 1350 sxs 50-50 Pozmix Class "H" w/2% CaCl₂ & 2% gel (14.2 ppg, 1.26 ft³/sx) followed by 300 sxs Class "H" w/2% CaCl₂ (15.6 ppg, 1.18 ft³/sx).

Intermediate Casing: 1st Stage: 1700 sxs HLW w/5# gilsonite/sx and 1/4# flocele (12.7 ppg, 1.84 ft³/sx) followed by 200 sxs Class "H" w/2% CaCl₂ (15.6 ppg, 1.18 ft³/sx). 2nd Stage: 2000 sxs HLW w/10# salt/sack (13 ppg, 1.9 ft³/sx) followed by 200 sxs Class "H" w/2% CaCl₂ (15.6 ppg, 1.18 ft³/sx).

Production Casing: 1st Stage: 375 sxs Class "H" w/1/4# flocele/sx (15.6 ppg, 1.18 ft³/sx). 2nd Stage: 500 sxs HLW w/6% gel (12.8 ppg, 1.8 ft³/sx) followed by 200 sxs Class "H" w/1/4# flocele/sx (15.6 ppg, 1.18 ft³/sx).

4. ABOVE SPACE DESCRIBE PROPOSED PROGRAM: IF PROPOSAL IS TO DEEPEN OR PLUG BACK, GIVE DATA ON PRESENT PRODUCTIVE ZONE AND PROPOSED NEW PRODUCTIVE ZONE. GIVE BLOWOUT PREVENTER PROGRAM, IF ANY.

hereby certify that the information above is true and complete to the best of my knowledge and belief.

Signed J. S. Lane Title Asst. Petr. Engr. Mgr. Date August 13, 1982

(This space for State Use)

ORIGINAL SIGNED BY

APPROVED BY JERRY SEATON

CONDITIONS OF APPROVAL: DISTRICT 1 SUPR.

TITLE

DATE

AUG 18 1982

APPROVAL VALID FOR 180 DAYS
PERMIT EXPIRES 2/18/83
UNLESS DRILLING UNDERWAY

NEW MEXICO OIL CONSERVATION COMMISSION
WELL LOCATION AND ACREAGE DEDICATION PLAT

Form C-102
Supersedes C-128
Effective 1-1-65

All distances must be from the outer boundaries of the Section.

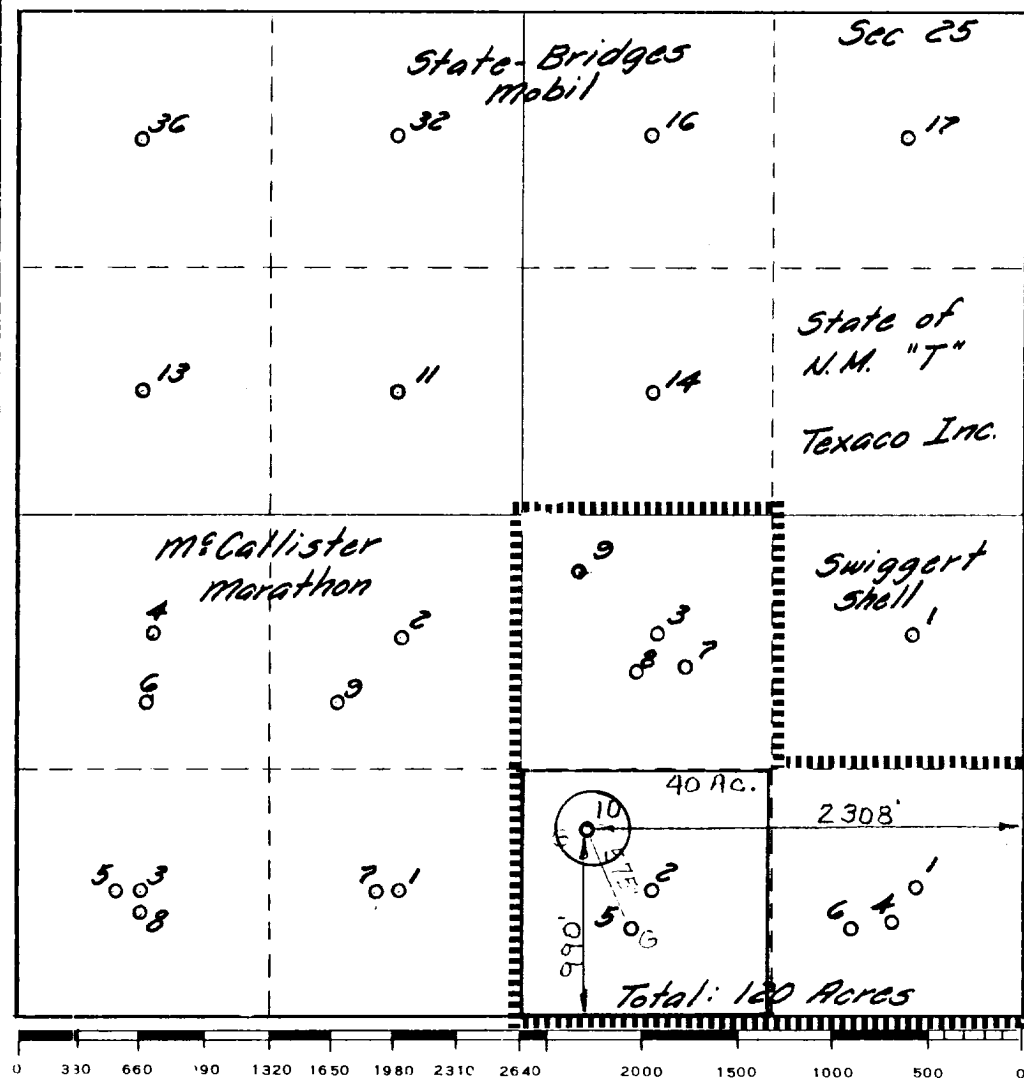
Operator Texaco Inc.			Lease New Mexico "Q" State		Well No. 10
Unit Letter 0	Section 25	Township 17-S	Range 34-E	County Lea	
Actual Footage Location of Well: 990 feet from the South line and 2308 feet from the East line					
Ground Level Elev. 3997'	Producing Formation Glorieta		Pool Vacuum Glorieta		Dedicated Acreage: 40 Acres

1. Outline the acreage dedicated to the subject well by colored pencil or hatchure marks on the plat below.
2. If more than one lease is dedicated to the well, outline each and identify the ownership thereof (both as to working interest and royalty).
3. If more than one lease of different ownership is dedicated to the well, have the interests of all owners been consolidated by communitization, unitization, force-pooling, etc?

☐ Yes ☐ No If answer is "yes," type of consolidation _____

If answer is "no," list the owners and tract descriptions which have actually been consolidated. (Use reverse side of this form if necessary.) _____

No allowable will be assigned to the well until all interests have been consolidated (by communitization, unitization, forced-pooling, or otherwise) or until a non-standard unit, eliminating such interests, has been approved by the Commission.



CERTIFICATION

I hereby certify that the information contained herein is true and complete to the best of my knowledge and belief.

Name
B. L. Eiland
Position
Division Surveyor

Company
Texaco Inc.

Date
August 6, 1982

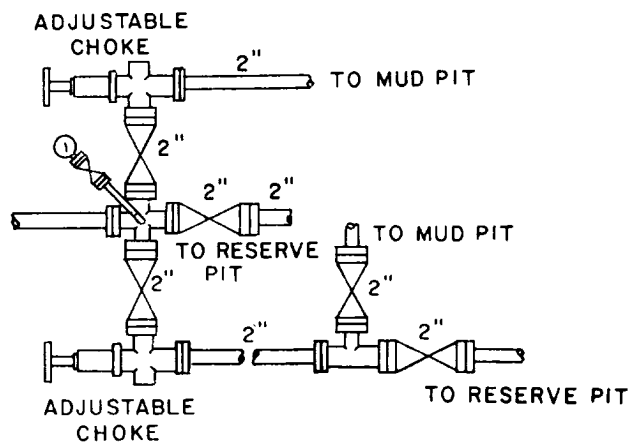
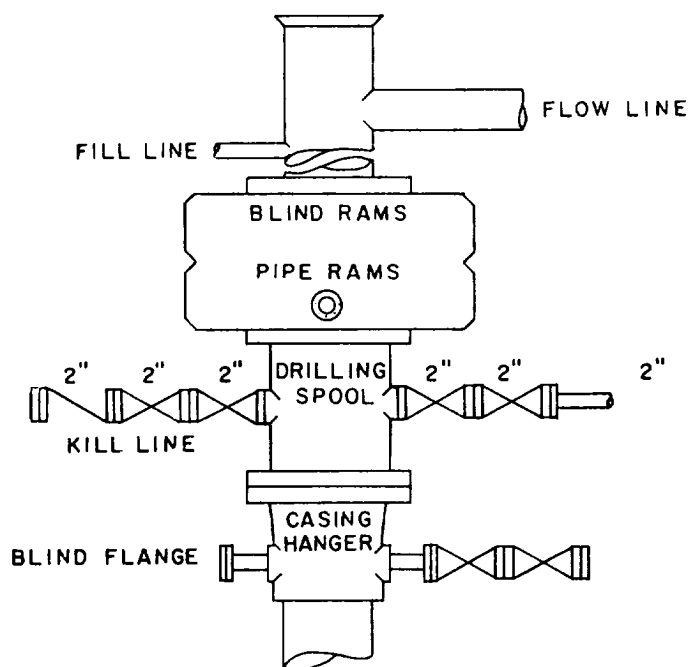
I hereby certify that the well location shown on this plat was plotted from field notes of actual surveys made by me or under my supervision, and that the same is true and correct to the best of my knowledge and belief.

August 6, 1982

Date Surveyed

Registered Professional Engineer and/or A and Surveyor
B. L. Eiland

Certificate No.
4386



SCALE: NONE	DATE	EST. NO.	DRG. NO.
DRAWN BY JWD			
CHECKED BY RDW			
APPROVED BY			



TEXACO, INC.
PRODUCING DEPARTMENT-U.S. (EAST)
MIDLAND, TEXAS



EXHIBIT "B"

RECEIVED

AUG 18 1982

SAC
HOBBS OFFICE

473