

NEW MEXICO OIL CONSERVATION COMMISSION  
WELL LOCATION AND ACREAGE DEDICATION PLAT

Form C-102  
Supersedes C-128  
Effective 1-1-65

All distances must be from the outer boundaries of the Section.

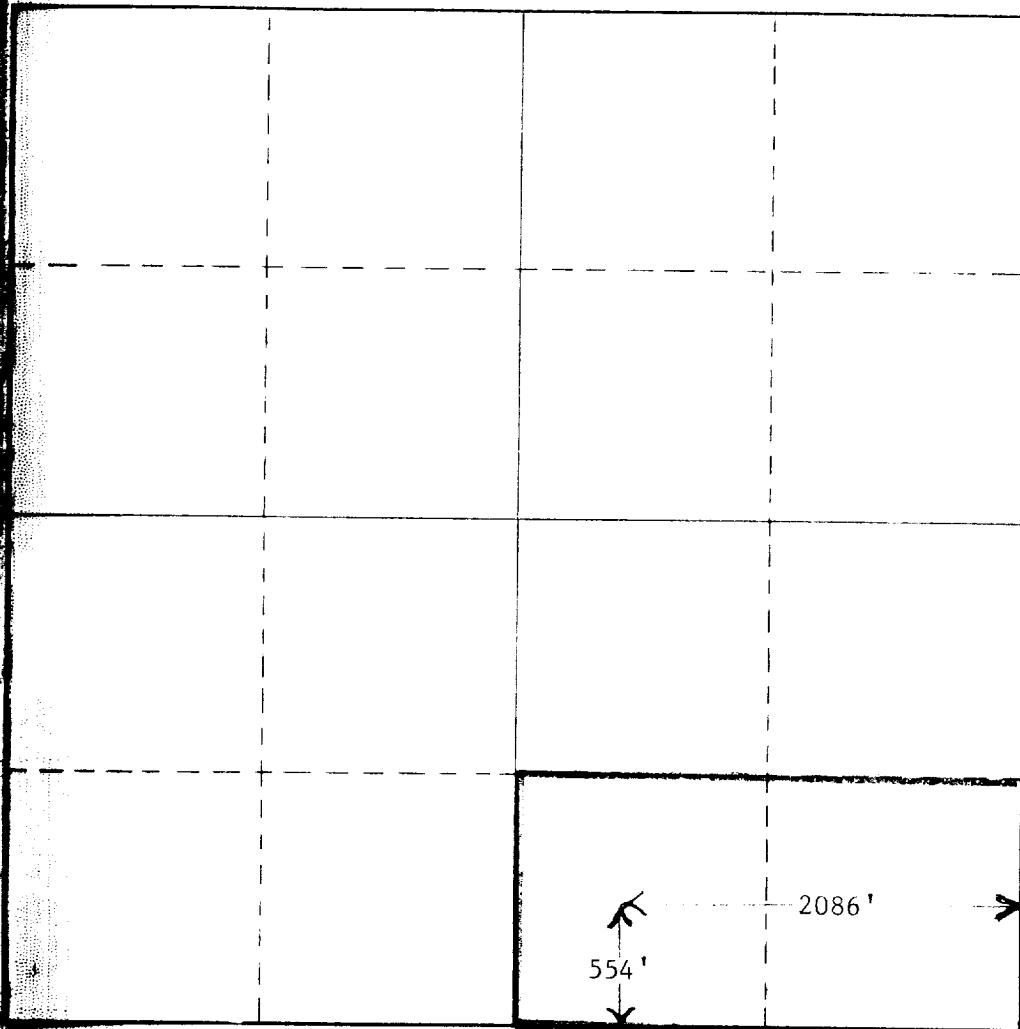
Operator <b>Western Oil Producers, Inc.</b>			Lease <b>State MTS</b>		Well No. <b>1</b>
Section Letter <b>0</b>	Section <b>4</b>	Township <b>19 South</b>	Range <b>35 East</b>	County <b>Lea</b>	
Well Footage Location of Well: <b>554</b> feet from the <b>South</b> line and <b>2086</b> feet from the <b>East</b> line					
Well Level Elev. <b>881.6</b>	Producing Formation <b>Bone Springs</b>		Pool <b>Scarb</b>		Dedicated Acreage: <b>80</b> Acres

- Outline the acreage dedicated to the subject well by colored pencil or hatchure marks on the plat below.
- If more than one lease is dedicated to the well, outline each and identify the ownership thereof (both as to working interest and royalty).
- If more than one lease of different ownership is dedicated to the well, have the interests of all owners been consolidated by communitization, unitization, force-pooling, etc?

☐ Yes ☐ No If answer is "yes," type of consolidation \_\_\_\_\_

If answer is "no," list the owners and tract descriptions which have actually been consolidated. (Use reverse side of this form if necessary.) \_\_\_\_\_

No allowable will be assigned to the well until all interests have been consolidated (by communitization, unitization, forced-pooling, or otherwise) or until a non-standard unit, eliminating such interests, has been approved by the Commission.



CERTIFICATION

I hereby certify that the information contained herein is true and complete to the best of my knowledge and belief.  
Amended from original of  
9/23/82

Name  
*Arnell Hewkitt*  
Position  
Agent

Company  
Western Oil Producers, Inc.

Date  
11/15/82

I hereby certify that the well location shown on this plat was plotted from field notes of actual surveys made by me or under my supervision, and that the same is true and correct to the best of my knowledge and belief.

Date Surveyed

9/23/82

Registered Professional Engineer and/or Land Surveyor

John W. West 676  
Certificate No.

0 800 660 190 1320 1650 1980 2310 2640 2000 1500 1000 500 0

RECEIVED

NOV 17 1982

O.C.S.  
HOBBS OFFICE

## RE-ISSUED COMPLETION

© Copyrighted Reproduction Prohibited

COUNTY	LEA	FIELD	Scharb	STATE	NM
OPR	WESTERN OIL PRODUCERS, INC.			API	30-025-27947
CO	1	LEASE	State "MTS"	MAP	
	Sec 4, T19S, R35E			CO-ORD	
	554 FSL, 2086 FEL of Sec				12-1-34 NM
	8 mi S/Buckeye			SPLD	9-30-82
				CMP	*12-27-82

13 3/8-310-300 sx  
8 5/8-3860-1300 sx  
5 1/2-10,774-850 sx

FORMATION		DATUM	FORMATION		DATUM
10	10,766 (WFMP)	PBD	10,732		

IP (Wolfcamp) Perfs 9542-9662 F 300 BOPD + 2 BW. Pot based  
on 24 hr test thru 28/64 chk. GOR TSTM; gty (NR); CP 100;  
TP 125

CONTR WEK #2 OPRSELEV 3882 GL sub-s 11

F.R. 10-4-82  
PD 10,800 RT (Wolfcamp)  
10-5-82 Drlg 1535  
mw 9.9, vis 36  
10-12-82 Drlg 4159 lm  
10-19-82 Drlg 8220 lm  
10-26-82 TD 10,004; WO Equip  
DST (Wolfcamp) 9410-9600, op 1 hr 30 mins,  
rec 200 FT DFLUD + 486 FT OCG (Sampler rec  
1300 CC OIL + .7 CFT GAS @ 1000), 1 hr 30  
min ISIP 3556, FP 225-1114, 2 hr FSIP 2706,  
HP 4404-2790, BHT 139 deg  
11-2-82 TD 10,766; PBD 10,732; LDDP  
DST (Wolfcamp) 10,520-716, op 1 hr 30 mins,  
rec 523 FT O&GCM (Sampler rec 100 CC OIL +  
900 CC MUD + .115 CFT GAS), 1 hr 30 min ISIP  
1948, FP 182-251, 2 hr FSIP 273, HP 5227-5204,  
BHT 142 deg

12-1-34 NM

NM  
Page #2

COUNTY LEA FIELD Scharb STATE NM  
 OPR WESTERN OIL PRODUCERS, INC. API 30-025-27947  
 NO 1 LEASE State "MTS" MAP  
Sec 4, T19S, R35E CO ORD  
554 FSL, 2086 FEL of Sec 12-1-34 NM  
8 mi S/Buckeye SPD 9-30-82 CMP 11-9-82

CSC.	WELL CLASS: INIT D FIN DO USE CODE			
	FORMATION	DATUM	FORMATION	DATUM
	TD	10,766 (WFMP)	PBD	10,732

IP (Wolfcamp) Perfs 9542-9662 F 300 BOPD + 2 BW, Pot  
 based on 24 hr test thru 28/64 chk. GOR TSTM; g - 95  
 CP 100; T2 125

CONTR WEK #2 OPRSEV 3882 GL Author 11

F.R. 10-4-82  
 PD 10,800 RT (Wolfcamp)  
 10-5-82 Drlg 1535  
 mw 9.9, vis 36  
 10-12-82 Drlg 4159 1m  
 10-19-82 Drlg 8220 1m  
 10-26-82 TD 10,004; WO Equip  
 DST (Wolfcamp) 9410-9600, op 1 hr 10 min  
 200 FT DFLUD + 486 FT OCC (Sampler rec 100 CC  
 OIL + .7 CFT GAS @ 1000), 1 hr 30 min ISIP 2556,  
 FP 225-1114, 2 hr ESIP 2706, HP 4400-1114, DST  
 139 deg  
 11-2-82 TD 10,766; PBD 10,732; LDDP  
 DST (Wolfcamp) 10,520-716, op 1 hr 10 min  
 523 FT O&GCM (Sampler rec 100 CC OIL + .7 CFT  
 MUD + .115 CFT GAS), 1 hr 30 min ISIP 2556, HP

12-1-34 NM

---

LEA  
WESTERN OIL PRODUCERS,  
INC.

Scharb  
1 State "MTS"  
Sec 4, T19S, R35E

NM  
Page #2

11-2-82 Continued  
182-251, 2 hr FSIP 273, HP 5227-5204,  
BHT 142 deg  
11-9-82 TD 10,766; PBD 10,732; WOCU  
11-22-82 TD 10,766; PBD 10,732; Tstg  
Perf (Wolfcamp) 9542-98, 9600-62  
Natural  
11-29-82 TD 10,766; PBD 10,732; Complete  
Rig Released 11-1-82  
12-4-82 COMPLETION ISSUED

12-1-34 NM  
IC 30-025-70748-82

---

NEW MEXICO OIL CONSERVATION COMMISSION  
WELL LOCATION AND ACREAGE DEDICATION PLAT

Form 102  
Superceded G-128  
Effective 1-1-83

All distances must be from the outer boundaries of the Section

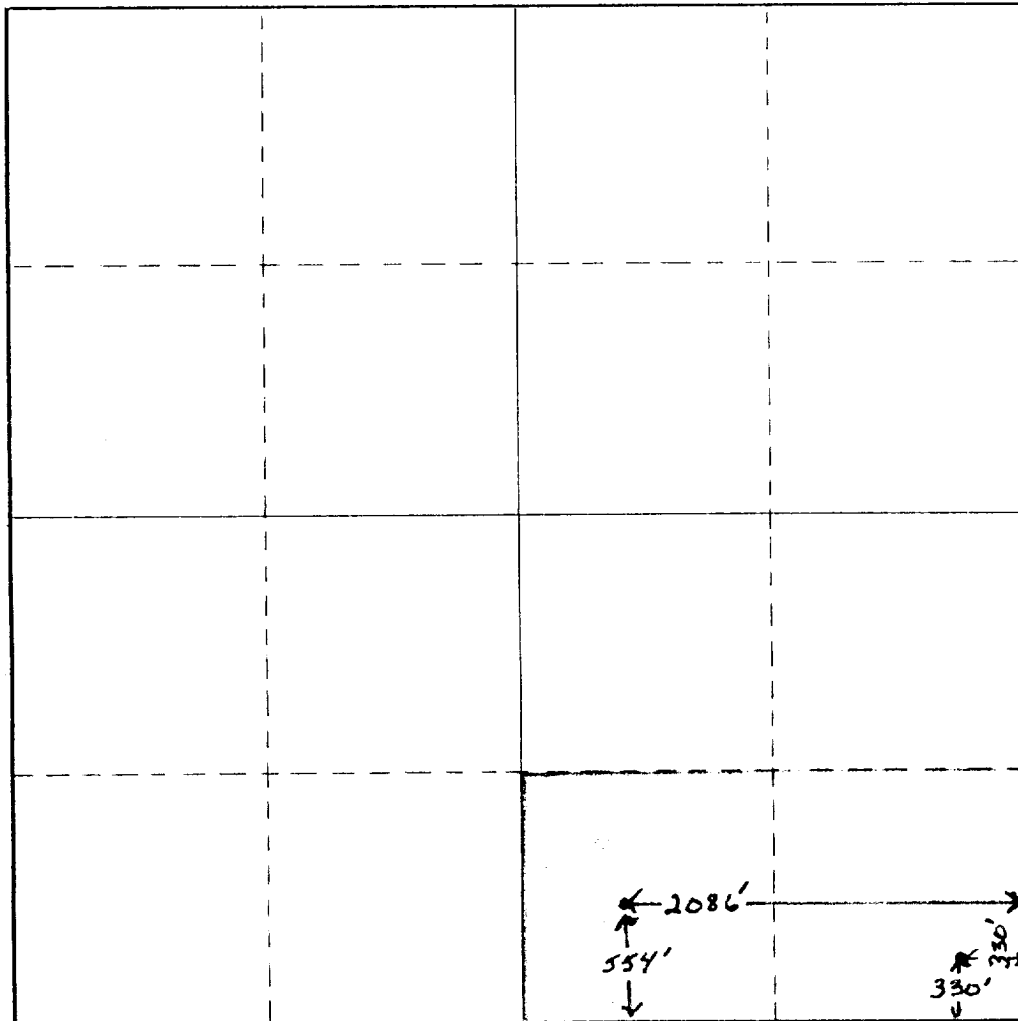
Owner <b>Western Oil Producers, Inc.</b>			Lease <b>State MTS</b>		Well No. <b>1</b>
Tract Letter <b>0</b>	Section <b>4</b>	Township <b>19 South</b>	Range <b>35 East</b>	County <b>Lea</b>	
Actual Footage Location of Well: <b>554</b> feet from the <b>South</b> line and <b>2086</b> feet from the <b>East</b> line					
Ground Level Elev. <b>3881.6</b>	Producing Formation <b>Bone Spring</b> <b>Wolfcamp</b>	Pool <b>Scarb Bone Spring</b>	Dedicated Acreage: <b>40 80</b> Acres		

1. Outline the acreage dedicated to the subject well by colored pencil or hatchure marks on the plat below.
2. If more than one lease is dedicated to the well, outline each and identify the ownership thereof (both as to working interest and royalty).
3. If more than one lease of different ownership is dedicated to the well, have the interests of all owners been consolidated by communitization, unitization, force-pooling, etc?

☐ Yes ☐ No If answer is "yes," type of consolidation \_\_\_\_\_

If answer is "no," list the owners and tract descriptions which have actually been consolidated. (Use reverse side of this form if necessary.) \_\_\_\_\_

No allowable will be assigned to the well until all interests have been consolidated (by communitization, unitization, forced-pooling, or otherwise) or until a non-standard unit, eliminating such interests, has been approved by the Commission.



CERTIFICATION

I hereby certify that the information contained herein is true and complete to the best of my knowledge and belief.

*Arnold Newkirk*

Name

Arnold Newkirk

Position

Agent

Company

Western Oil Producers, Inc.

Date

2-29-84

I hereby certify that the well location shown on this plat was plotted from field notes of actual surveys made by me or under my supervision, and that the same is true and correct to the best of my knowledge and belief.

Date Surveyed

9/23/82

Registered Professional Engineer and/or Land Surveyor

Original in your file

Certificate No.

