

30-025-30036

NO. OF COPIES RECEIVED	
DISTRIBUTION	
SANTA FE	
FILE	
U.S.G.S.	
LAND OFFICE	
OPERATOR	

NEW MEXICO OIL CONSERVATION COMMISSION

Texaco Lease # 255100

Form C-101
Revised 1-1-65

5A. Indicate Type of Lease	
STATE <input checked="" type="checkbox"/>	FEE <input type="checkbox"/>

5B. State Oil & Gas Lease No.

APPLICATION FOR PERMIT TO DRILL, DEEPEN, OR PLUG BACK

1a. Type of Work		7. Unit Agreement Name	
b. Type of Well OIL WELL <input type="checkbox"/> GAS WELL <input type="checkbox"/> OTHER <input checked="" type="checkbox"/> Water Injection DEEPEN <input type="checkbox"/> PLUG BACK <input type="checkbox"/>		8. Farm or Lease Name Central Vacuum Unit	
2. Name of Operator Texaco Inc.		9. Well No. 156	
3. Address of Operator P. O. Box 3109 Midland, Texas 79702		10. Field and Pool, or Wildcat Vacuum	
4. Location of Well UNIT LETTER <u>K</u> LOCATED <u>2340</u> FEET FROM THE <u>South</u> LINE AND <u>1330</u> FEET FROM THE <u>West</u> LINE OF SEC. <u>25</u> T-17-S R-34-E MPM		11. County Lea	
21. Elevations (Show whether DE, RI, etc.) 4005' Gr		21A. Kind & Status Plug. Bond 4800'	21B. Drilling Team/rotor San Andres
21C. Rotary or C.T. Rotary		21D. Approx. Date Work will start Immediately	

23.

PROPOSED CASING AND CEMENT PROGRAM

SIZE OF HOLE	SIZE OF CASING	WEIGHT PER FOOT	SETTING DEPTH	SACKS OF CEMENT	EST. TOP
20"	16"	65#, H-40	350'	650	Circulate
15"	11 3/4"	42#, H-40	1570'	1200	Circulate
*11" 7 7/8"	5 1/2" 5 1/2"	15.5#, K-55	4800'	2800'	Circulate

Surface Casing: 650 sxs Class "H" w/2% CaCl₂ (15.6 ppg, 1.18 ft³/sx).
Intermediate Casing: 1000 sxs 50:50 Pozmix Class "H" w.5# gilsonite, 1/4# flocele & 2% CaCl₂ (13.7 ppg, 1.37 ft³/sx), followed by 200 sxs Class "H" w/1/4# flocele/sx & 2% CaCl₂ (15.6 ppg, 1.18 ft³/sx).
Production Casing: 2500 sxs HLW w/15# salt & 1/4# flocele/sx (12.5 ppg, 1.18 ft³/sx) followed by 300 sxs Class "H" w/1/4# flocele/sx (15.6 ppg, 1.18 ft³/sx).

*The 11" hole will permit the running of 8-5/8" intermediate casing should a waterflow be encountered.

APPROVAL VALID FOR 180 DAYS
PERMIT EXPIRES 5/16/83
UNLESS DRILLING UNDERWAY

NSI-1612

IN ABOVE SPACE DESCRIBE PROPOSED PROGRAM; IF PROPOSAL IS TO DEEPEN EXISTING WELL, GIVE DATA ON PRESENT PRODUCTIVE ZONE AND PROPOSED NEW PRODUCTIVE ZONE. GIVE BLOWOUT PREVENTER PROGRAM, IF ANY.

I hereby certify that the information above is true and complete to the best of my knowledge and belief.

Signed R. S. Lane Title Asst. Petr. Engr. Mgr. Date NOV 10 1982
(This space for State Use)

APPROVED BY Eddie W. Bean TITLE OIL & GAS INSPECTOR DATE NOV 10 1982
CONDITIONS OF APPROVAL, IF ANY:

NEW MEXICO OIL CONSERVATION COMMISSION
WELL LOCATION AND ACREAGE DEDICATION PLAT

Form C-102
Supersedes C-128
Effective 1-1-65

All distances must be from the outer boundaries of the Section.

Operator Texaco Inc.			Lease Central Vacuum Unit			Well No. 156
Unit Letter K	Section 25	Township T-17-S	Range R-34-E	County Lea		
Actual Footage Location of Well: 2340 feet from the South line and 1330' feet from the West line						
Ground Level Elev. 4005'	Producing Formation San Andres		Pool Vacuum	Dedicated Acreage: Injection Well Acres		

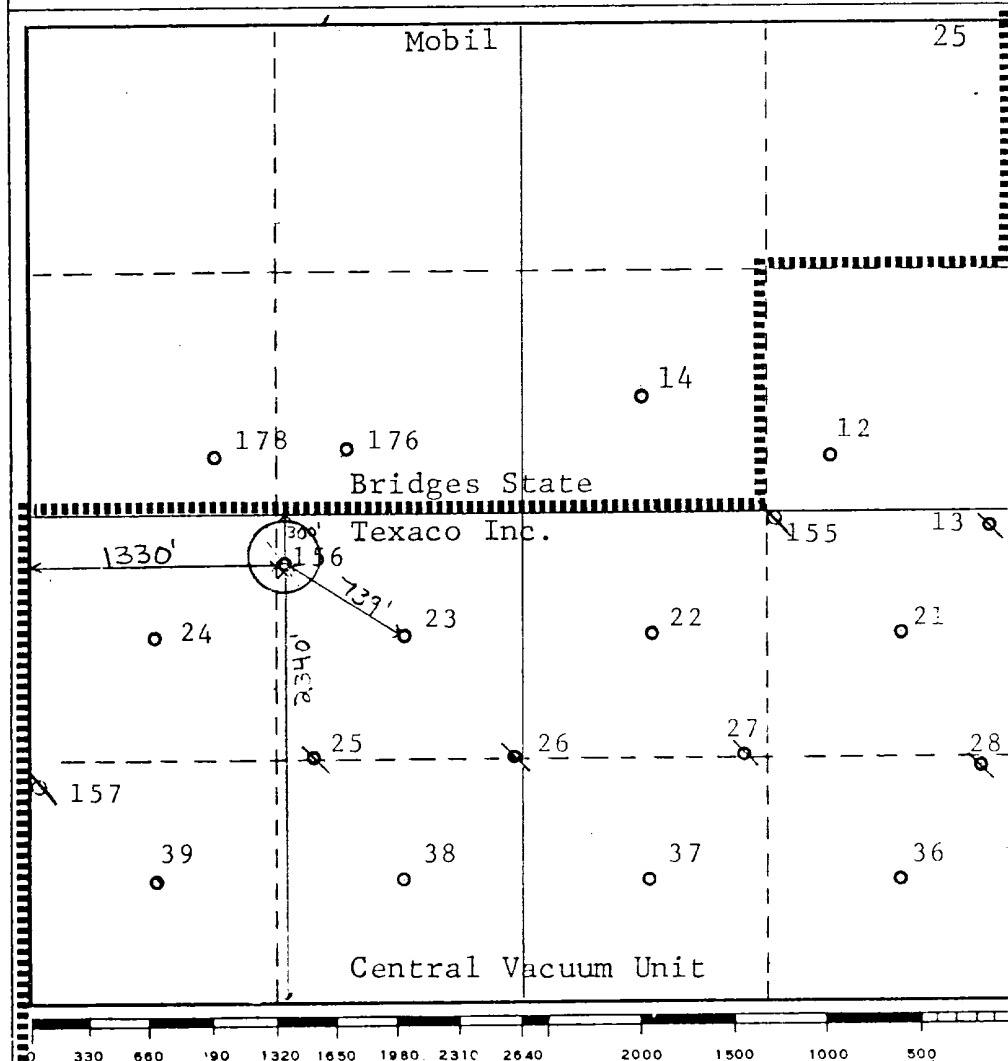
Unorthodox Location

1. Outline the acreage dedicated to the subject well by colored pencil or hachure marks on the plat below.
2. If more than one lease is dedicated to the well, outline each and identify the ownership thereof (both as to working interest and royalty).
3. If more than one lease of different ownership is dedicated to the well, have the interests of all owners been consolidated by communitization, unitization, force-pooling, etc?

☐ Yes ☐ No If answer is "yes," type of consolidation _____

If answer is "no," list the owners and tract descriptions which have actually been consolidated. (Use reverse side of this form if necessary.) _____

No allowable will be assigned to the well until all interests have been consolidated (by communitization, unitization, forced-pooling, or otherwise) or until a non-standard unit, eliminating such interests, has been approved by the Commission.



CERTIFICATION

I hereby certify that the information contained herein is true and complete to the best of my knowledge and belief.

B. L. Eiland

Name

B. L. Eiland

Position

Division Surveyor

Company

Texaco Inc.

Date

September 30, 1982

I hereby certify that the well location shown on this plat was plotted from field notes of actual surveys made by me or under my supervision, and that the same is true and correct to the best of my knowledge and belief.

Date Surveyed

September 23, 1982

Registered Professional Engineer and/or Land Surveyor

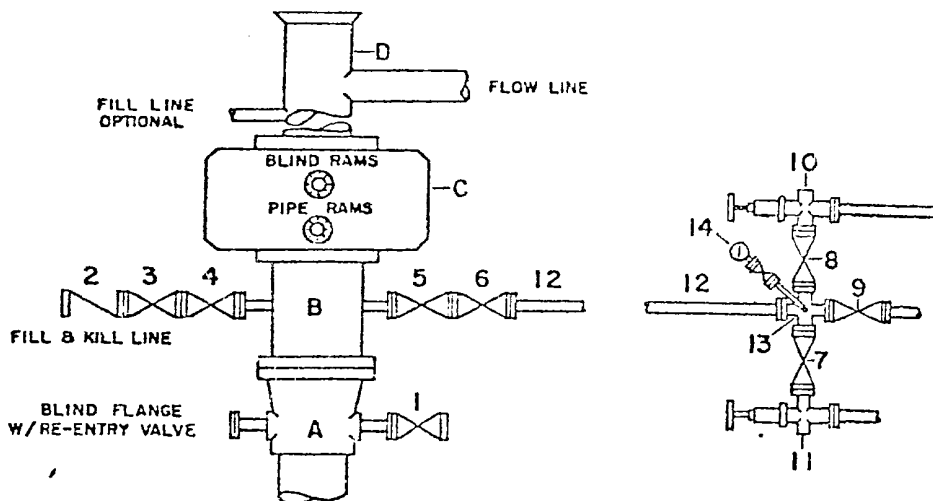
B. L. Eiland
B. L. Eiland

Certificate No.

4386

DRILLING CONTROL CONDITION II-3000 PSI WP

H₂S TRIM REQUIRED
YES _____ NO _____



DRILLING CONTROL

MATERIAL LIST - CONDITION II

- | | |
|------------|---------------------------------------------------------------------------------------------------------------------------------------------------------------------------------------------------|
| A | Texaco Wellhead |
| B | 3000# W.P. drilling spool with a 2" minimum flanged outlet for kill-line and 3" minimum flanged outlet for choke line |
| C | 3000# W.P. Dual ram type preventer, hydraulic operated with 1" steel, 3000# W.P. control lines (where sub-structure height is adequate, 2-3000# W.P. single ram type preventers may be utilized.) |
| D | Bell nipple with flowline and fill-up outlets. (Kill line may also be used for fill-up line.) |
| 1,3,4, 7,8 | 2" minimum 3000# W.P. flanged full opening steel gate valve, or Halliburton Lo Torc Plug valve. |
| 2 | 2" minimum 3000# W.P. back pressure valve |
| 5,6,9 | 3" minimum 3000# W.P. flanged full opening steel gate valve, or Halliburton Lo Torc Plug valve. |
| 12 | 3" minimum schedule 80, Grade "B", seamless line pipe |
| 13 | 2" minimum x 3" minimum 3000# W.P. flanged cross |
| 10, 11 | 2" minimum 3000# W.P. adjustable choke bodies |
| 14 | Cameron Mud Gauge or equivalent (location optional in choke line.) |

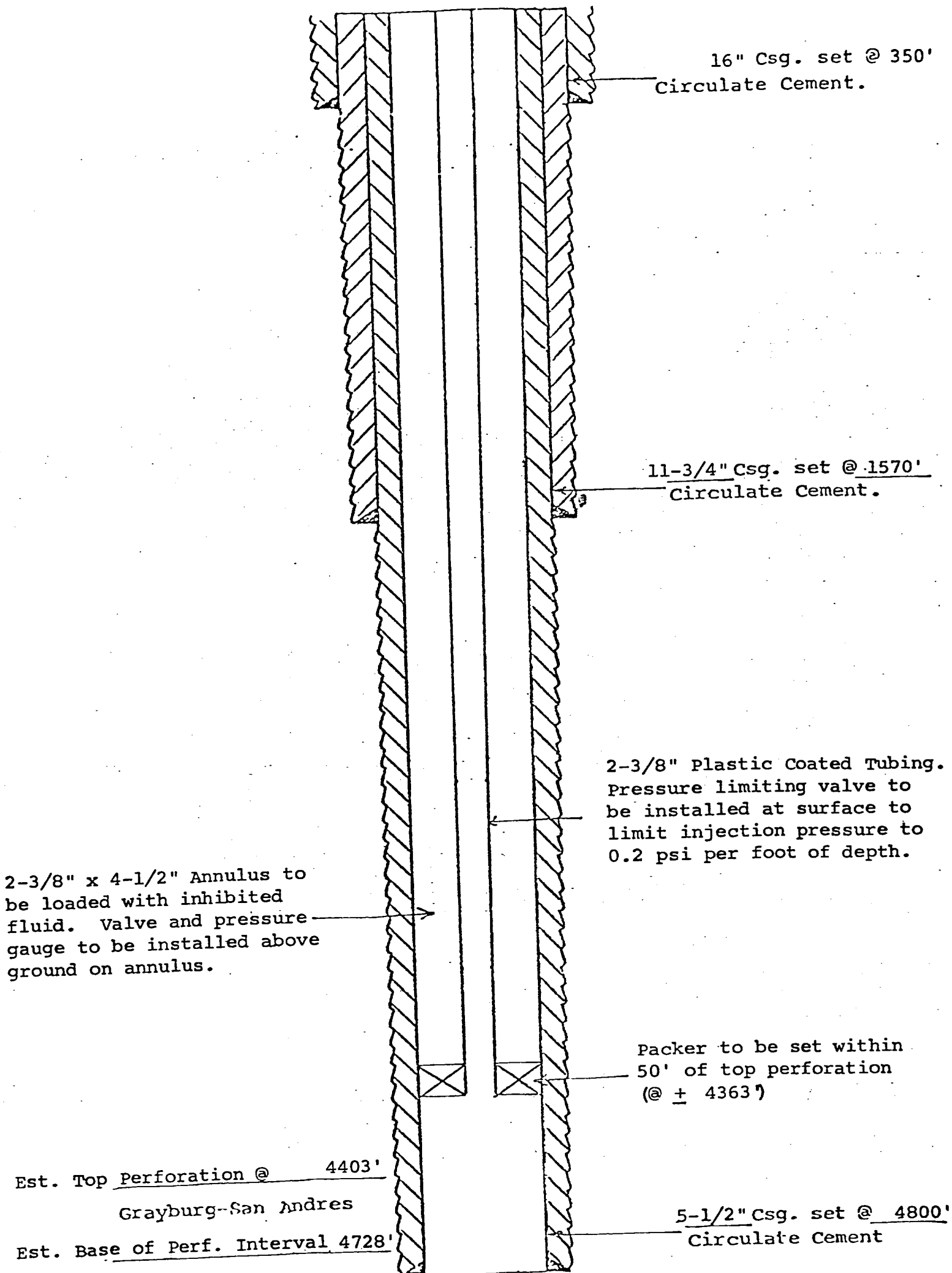


TEXACO, INC.
PRODUCING DEPARTMENT U.S.
MIDLAND, TEXAS



SCALE	DATE	EST. NO.	DRG. NO.
DRAWN BY			
CHECKED BY			
APPROVED BY			

EXHIBIT B



PROPOSED INJECTION WELLS

CENTRAL VACUUM UNIT
WELL NO. 156
VACUUM GRAYBURG-SAN ANDRES FIELD
LEA COUNTY, NEW MEXICO