

NO. OF COPIES RECEIVED	
DISTRIBUTION	
SANTA FE	
FILE	
U.S.G.S.	
LAND OFFICE	
OPERATOR	

NEW MEXICO OIL CONSERVATION COMMISSION

Texaco Lease # 255100

Form C-101
Revised 1-1-65

5A. Indicate Type of Lease
STATE ☒ FEE ☐

5. State Oil & Gas Lease No.

APPLICATION FOR PERMIT TO DRILL, DEEPEN, OR PLUG BACK

1a. Type of Work b. Type of Well OIL WELL <input type="checkbox"/> GAS WELL <input type="checkbox"/> OTHER <input type="checkbox"/> DRILL <input checked="" type="checkbox"/> DEEPEN <input type="checkbox"/> PLUG BACK <input type="checkbox"/> Water Injection SINGLE ZONE <input checked="" type="checkbox"/> MULTIPLE ZONE <input type="checkbox"/>		7. Unit Agreement Name
2. Name of Operator Texaco Inc.		8. Farm or Lease Name Central Vacuum Unit
3. Address of Operator P. O. Box 3109 Midland, Texas 79702		9. Well No. 158
4. Location of Well UNIT LETTER D LOCATED 100 FEET FROM THE North LINE AND 150 FEET FROM THE West LINE OF SEC. 36 TWP. T-17-S RSE. R-34-E NMPM		10. Field and Pool, or Wildcat Vacuum
		12. County Lea
		13. Proposed Depth 4800'
		19A. Formation San Andres
		20. Rotary or C.T. Rotary
21. Elevations (Show whether DF, RT, etc.) 4007' Gr	21A. Kind & Status Plug. Bond	21B. Drilling Contractor
		22. Approx. Date Work will start Immediately

23.

PROPOSED CASING AND CEMENT PROGRAM

SIZE OF HOLE	SIZE OF CASING	WEIGHT PER FOOT	SETTING DEPTH	SACKS OF CEMENT	EST. TOP
20"	16"	65#, H-40	350'	650	Circulate
15"	11 3/4"	42#, H-40	1570'	1200	Circulate
*11" 7 7/8"	5 1/2" 5 1/2"	15.5#, K-55	4800'	2800	Circulate

Surface Casing: 650 sxs Class "H" w/2% CaCl₂ (15.6 ppg, 1.18 ft³/sx).
Intermediate Casing: 1000 sxs 50:50 Pozmix Class "H" w/5# gilsonite, 1/4# flocele & 2% CaCl₂ (13.7 ppg, 1.37 ft³/sx), followed by 200 sxs Class "H" w/1/4# flocele/sx & 2% CaCl₂ (15.6 ppg, 1.18 ft³/sx).
Production Casing: 2500 sxs HLW w/15# salt & 1/4# flocele/sx (12.5 ppg, 1.18 ft³/sx) followed by 300 sxs Class "H" w/1/4# flocele/sx (15.6 ppg, 1.18 ft³/sx).

*The 11" hole will permit the running of 8-5/8" intermediate casing should a waterflow be encountered.

APPROVAL VALID FOR 180 DAYS
PERMIT EXPIRES 5/16/83
UNLESS DRILLING UNDERWAY

HEREBY CERTIFY THAT THE INFORMATION ABOVE IS TRUE AND COMPLETE TO THE BEST OF MY KNOWLEDGE AND BELIEF.

Signed R. S. Lane Title Asst. Petr. Engr. Manager Date NOV 16 1982
(This space for State Use)

APPROVED BY Eddie W. Lane TITLE OIL & GAS INSPECTOR DATE NOV 16 1982
CONDITIONS OF APPROVAL, IF ANY:

NEW MEXICO OIL CONSERVATION COMMISSION
WELL LOCATION AND ACREAGE DEDICATION PLAT

Form C-102
Supersedes C-128
Effective 1-1-65

All distances must be from the outer boundaries of the Section.

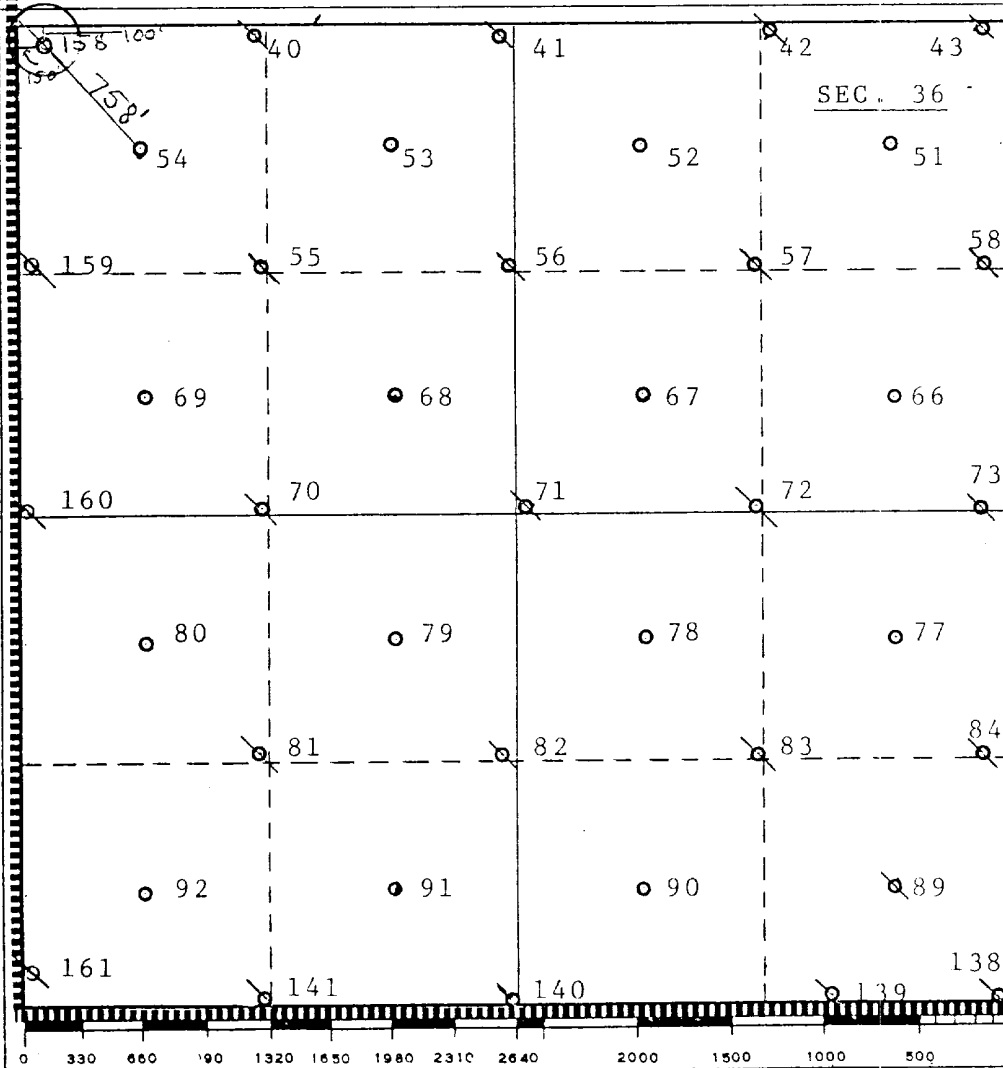
Operator Texaco Inc.		Lease Central Vacuum Unit		Well No. 158
Unit Letter D	Section 36	Township T-17-S	Range R-34-E	County Lea
Actual Footage Location of Well: 100 feet from the North line and 150 feet from the West line				
Ground Level Elev. 4007	Producing Formation San Andres	Pool Vacuum	Dedicated Acreage: Injection Well Acres	

1. Outline the acreage dedicated to the subject well by colored pencil or hachure marks on the plat below.
2. If more than one lease is dedicated to the well, outline each and identify the ownership thereof (both as to working interest and royalty).
3. If more than one lease of different ownership is dedicated to the well, have the interests of all owners been consolidated by communitization, unitization, force-pooling, etc?

☐ Yes ☐ No If answer is "yes," type of consolidation _____

If answer is "no," list the owners and tract descriptions which have actually been consolidated. (Use reverse side of this form if necessary.) _____

No allowable will be assigned to the well until all interests have been consolidated (by communitization, unitization, forced-pooling, or otherwise) or until a non-standard unit, eliminating such interests, has been approved by the Commission.



CERTIFICATION

I hereby certify that the information contained herein is true and complete to the best of my knowledge and belief.

Name
B. L. Eiland

Position
Division Surveyor

Company
Texaco Inc.

Date
September 30, 1982

I hereby certify that the well location shown on this plat was plotted from field notes of actual surveys made by me or under my supervision, and that the same is true and correct to the best of my knowledge and belief.

Date Surveyed
September 23, 1982

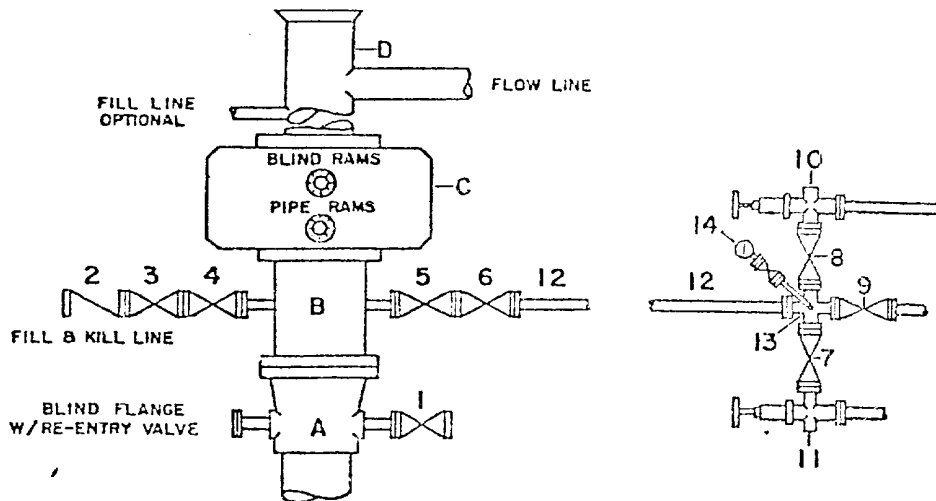
Registered Professional Engineer
and/or Land Surveyor

B. L. Eiland
Certificate No.

4386

DRILLING CONTROL CONDITION II-3000 PSI WP

H₂S TRIM REQUIRED
YES _____ NO _____



DRILLING CONTROL

MATERIAL LIST - CONDITION II

- A Texaco Wellhead
- B 3000# W.P. drilling spool with a 2" minimum flanged outlet for kill-line and 3" minimum flanged outlet for choke line
- C 3000# W.P. Dual ram type preventer, hydraulic operated with 1" steel, 3000# W.P. control lines (where sub-structure height is adequate, 2-3000# W.P. single ram type preventers may be utilized.)
- D Bell nipple with flowline and fill-up outlets. (Kill line may also be used for fill-up line.)
- 1,3,4, 7,8 2" minimum 3000# W.P. Flanged full opening steel gate valve, or Halliburton Lo Torc Plug valve.
- 2 2" minimum 3000# W.P. back pressure valve
- 5,6,9 3" minimum 3000# W.P. flanged full opening steel gate valve, or Halliburton Lo Torc Plug valve.
- 12 3" minimum schedule 80, Grade "B", seamless line pipe
- 13 2" minimum x 3" minimum 3000# W.P. flanged cross
- 10, 11 2" minimum 3000# W.P. adjustable choke bodies
- 14 Cameron Mud Gauge or equivalent (location optional in choke line.)

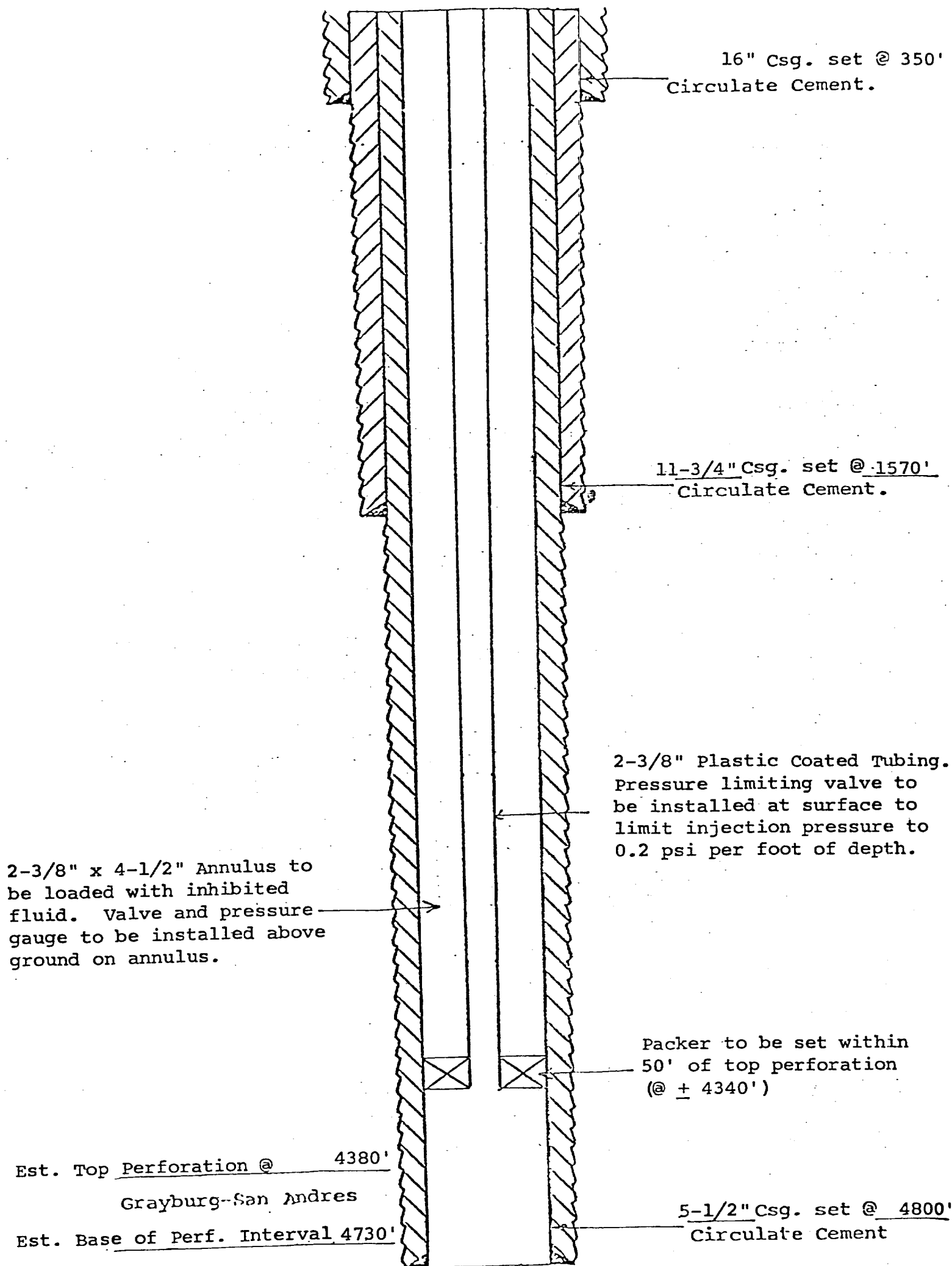


TEXACO, INC.
PRODUCING DEPARTMENT U.S.
MIDLAND, TEXAS



SCALE	DATE	EST. NO.	DRG. NO.
DRAWN BY			
CHECKED BY			
APPROVED BY			

EXHIBIT B



PROPOSED INJECTION WELLS

CENTRAL VACUUM UNIT
WELL NO. 158
VACUUM GRAYBURG-SAN ANDRES FIELD
LEA COUNTY, NEW MEXICO