

APPROVAL VALID FOR 180 DAYS
PERMIT EXPIRES 5/16/83
UNLESS DRILLING UNDERWAY

53-555-27970

NO. OF COPIES RECEIVED
DISTRIBUTION
SANTA FE
FILE
U.S.G.S.
LAND OFFICE
OPERATOR

NEW MEXICO OIL CONSERVATION COMMISSION

Texaco Lease # 255100

Form O-101
Revised 1-1-85

1. Indicate Type of Lease	
STATE <input checked="" type="checkbox"/>	FEE <input type="checkbox"/>
2. Indicate Gas Lease No.	

APPLICATION FOR PERMIT TO DRILL, DEEPEN OR PLUG BACK

1a. Type of Work DRILL <input checked="" type="checkbox"/> DEEPEN <input type="checkbox"/> PLUG BACK <input type="checkbox"/>		1. Unit Agreement Name
b. Type of Well OIL WELL <input type="checkbox"/> GAS WELL <input type="checkbox"/> OTHER Water Injection <input checked="" type="checkbox"/> OTHER <input type="checkbox"/>		2. Name of Lease Name Central Vacuum Unit
3. Name of Operator Texaco Inc.		3. Well No. 160
3. Address of Operator P. O. Box 3109 Midland, Texas 79702		4. Field and Pool, or Wildcat Vacuum
4. Location of Well: UNIT LETTER <u>E</u> LOCATED <u>2602</u> FEET FROM THE <u>North</u> LINE AND <u>35</u> FEET FROM THE <u>West</u> LINE OF SECTION <u>36</u> T-17-S R-34-E		5. County Lea
6. Elevation of Wellhead 4800		7. Rotary or C.T. Rotary
8. Elevations (Show whether O.K., R.L., etc.) 4004 Gr		9. Approx. Date Work will start Immediately

PROPOSED CASING AND CEMENT PROGRAM

SIZE OF HOLE	SIZE OF CASING	WEIGHT PER FOOT	SETTING DEPTH	SAVES OF CEMENT	EST. TOP
20"	16"	65#, H-40	350'	650	Circulate
15"	11 3/4"	42#, H-40	1530'	1200	Circulate
*11"	8 5/8"	28#, H-40	2675'	1100	Circulate
		28#, S-80			
7 7/8"	5 1/2"	15.5#, K-55	4800'	2300	Circulate
Surface Casing: 650 sxs Class "H" w/2% CaCl ₂ (15.6 ppg, 1.18 ft ³ /sx)					
1st Intermediate Casing: 1000 sxs 50:50 Pozmix Class "H" w/5# gilsonite, 1/4# flocele/sx, & 2% CaCl ₂ (13.7 ppg, 1.37 ft ³ /sx) followed by 200 sxs Class "H" w/1/4# flocele/sx & 2% CaCl ₂ (15.6 ppg, 1.18 ft ³ /sx).					
*2nd Intermediate Casing: 1st Stage: 500 sxs 50:50 Pozmic Class "H" w.8.6# salt & 1/4# flocele/sx (14.5 ppg, 1.31 ft ³ /sx) followed by 200 sxs Class "H" w/7.8# salt 1/4# flocele/sx (15.9 ppg, 1.22 ft ³ /sx). DV Tool @ 1540'.					
2nd Stage: 400 sxs Class "H" w.2% CaCl ₂ (15.6 ppg, 1.18 ft ³ /sx).					
Production Casing: 2000 sxs 50:50 Pozmix Class "H" w/5# gilsonite & 1/4# flocele/sx (13.7 ppg, 1.37 ft ³ /sx) followed by 300 sxs Class "H" w/1/4# flocele/sx (15.6 ppg., 1.18 ft ³ /sx).					

* SECOND INTERMEDIATE CASING TO BE RUN ONLY IF WATERFLOW IS ENCOUNTERED.

IN ABOVE SPACE DESCRIBE PROPOSED PROGRAM
FIVE ZONE. GIVE SUGGESTED INTERVALS AND CEMENT VOLUMES.

STATE ZONE AND PROPOSED NEW PRODUCTION

I hereby certify that the information above is true and correct.

Signed R. S. Lane
This Space for Seal

Asst. Petr. Engr. Manager.

September 30, 1982

APPROVED BY Eddie W. Dean
CONDITIONS OF APPROVAL, IF ANY:

OIL & GAS INSPECTOR

NOV 16 1982

NEW MEXICO OIL CONSERVATION COMMISSION
WELL LOCATION AND ACREAGE DEDICATION PLAT

Form C-102
Supersedes C-128
Effective 1-1-65

All distances must be from the outer boundaries of the Section.

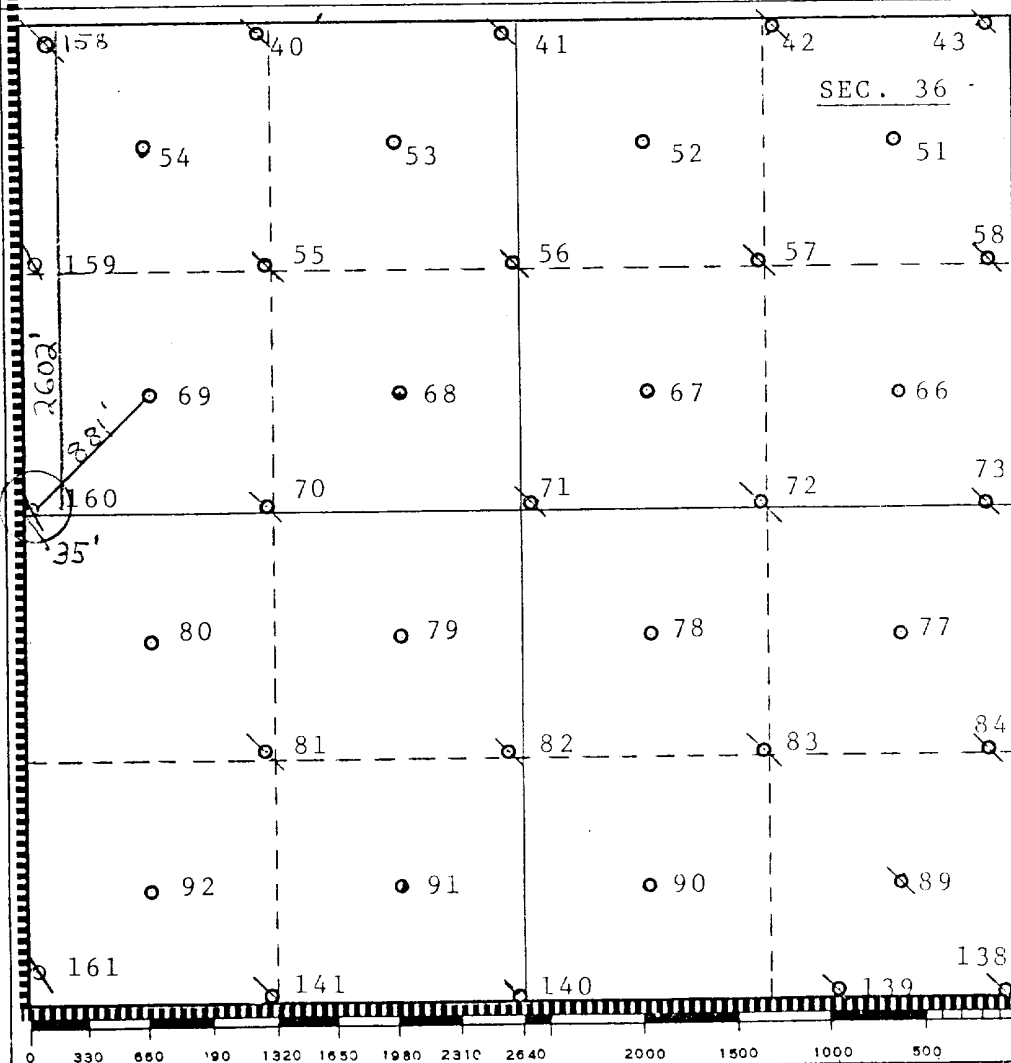
Operator Texaco Inc.		Lease Central Vacuum Unit		Well No. 160
Unit Letter E	Section 36	Township T-17-S	Range R-34-E	County Lea
Actual Footage Location of Well: 2602 feet from the North line and 35 feet from the West line				
Ground Level Elev. 4004'	Producing Formation San Andres	Pool Vacuum	Dedicated Acreage: Injection well <small>Acres</small>	

1. Outline the acreage dedicated to the subject well by colored pencil or hatchure marks on the plat below. Unorthodox Location
2. If more than one lease is dedicated to the well, outline each and identify the ownership thereof (both as to working interest and royalty).
3. If more than one lease of different ownership is dedicated to the well, have the interests of all owners been consolidated by communitization, unitization, force-pooling, etc?

☐ Yes ☐ No If answer is "yes," type of consolidation _____

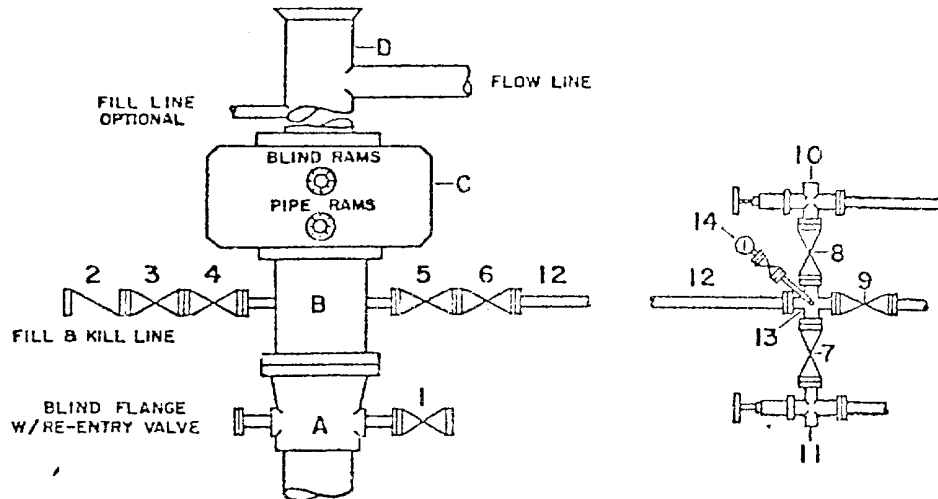
If answer is "no," list the owners and tract descriptions which have actually been consolidated. (Use reverse side of this form if necessary.) _____

No allowable will be assigned to the well until all interests have been consolidated (by communitization, unitization, forced-pooling, or otherwise) or until a non-standard unit, eliminating such interests, has been approved by the Commission.



DRILLING CONTROL CONDITION II-3000 PSI WP

H₂S TRIM REQUIRED
YES _____ NO _____



DRILLING CONTROL MATERIAL LIST - CONDITION II

- A Texaco Wellhead
- B 3000# W.P. drilling spool with a 2" minimum flanged outlet for kill-line and 3" minimum flanged outlet for choke line
- C 3000# W.P. Dual ram type preventer, hydraulic operated with 1" steel, 3000# W.P. control lines (where sub-structure height is adequate, 2-3000# W.P. single ram type preventers may be utilized.)
- D Bell nipple with flowline and fill-up outlets. (Kill line may also be used for fill-up line.)
- 1,3,4, 7,8 2" minimum 3000# W.P. flanged full opening steel gate valve, or Halliburton Lo Torc Plug valve.
- 2 2" minimum 3000# W.P. back pressure valve
- 5,6,9 3" minimum 3000# W.P. flanged full opening steel gate valve, or Halliburton Lo Torc Plug valve.
- 12 3" minimum schedule 80, Grade "B", seamless line pipe
- 13 2" minimum x 3" minimum 3000# W.P. flanged cross
- 10, 11 2" minimum 3000# W.P. adjustable choke bodies
- 14 Cameron Mud Gauge or equivalent (location optional in choke line.)

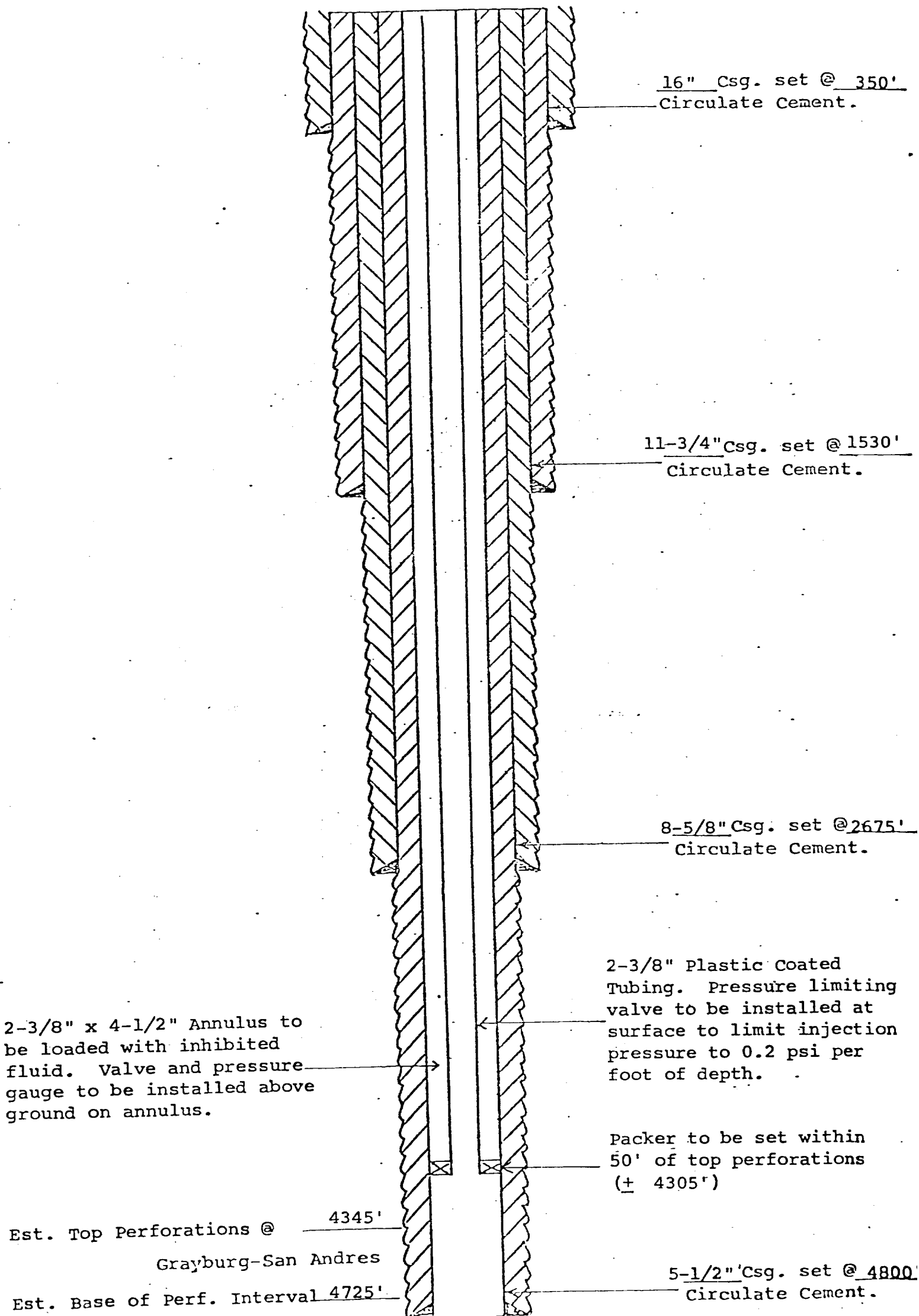
SCALE	DATE	EST. NO.	DRG. NO.
DRAWN BY			
CHECKED BY			
APPROVED BY			



TEXACO, INC.
PRODUCING DEPARTMENT U.S.
MIDLAND, TEXAS



EXHIBIT B



PROPOSED INJECTION WELLS

CENTRAL VACUUM UNIT
WELL NO. 160
VACUUM GRAYBURG-SAN ANDRES FIELD
LEA COUNTY, NEW MEXICO