

NO. OF COPIES RECEIVED	
DISTRIBUTION	
SANTA FE	
FILE	
U.S.G.S.	
LAND OFFICE	
OPERATOR	

NEW MEXICO OIL CONSERVATION COMMISSION

Form C-101
Revised 1-1-65

Texaco Lease # 254770

5A. Indicate Type of Lease STATE <input checked="" type="checkbox"/> FEE <input type="checkbox"/>
5. State Oil & Gas Lease No.
7. Unit Agreement Name
8. Farm or Lease Name Vacuum Grayburg San Andres Unit
9. Well No. 65
10. Field and Pool, or Wildcat Vacuum
10. County Lea
19. Proposed Depth 4800
19A. Formation San Andres
20. Rotary or C.T. Rotary
21. Elevations (Show whether DF, RT, etc.) 4005' Gr
21A. Kind & Status Plug. Bond
21B. Drilling Contractor
22. Approx. Date Work will start Immediately

APPLICATION FOR PERMIT TO DRILL, DEEPEN, OR PLUG BACK

1a. Type of Work b. Type of Well OIL WELL <input type="checkbox"/> GAS WELL <input type="checkbox"/> OTHER <input checked="" type="checkbox"/> Water Injection SINGLE ZONE <input checked="" type="checkbox"/> MULTIPLE ZONE <input type="checkbox"/>	DRILL <input checked="" type="checkbox"/> DEEPEN <input type="checkbox"/> PLUG BACK <input type="checkbox"/>
2. Name of Operator Texaco Inc.	
3. Address of Operator P. O. Box 3109 Midland, Texas 79702	
4. Location of Well UNIT LETTER M LOCATED 1310 FEET FROM THE South LINE AND 120 FEET FROM THE West LINE OF SEC. 35 T-17-S-34-R-34-E	
10. Proposed Depth 4800	19A. Formation San Andres
20. Rotary or C.T. Rotary	
21. Elevations (Show whether DF, RT, etc.) 4005' Gr	21A. Kind & Status Plug. Bond
21B. Drilling Contractor	22. Approx. Date Work will start Immediately

23. PROPOSED CASING AND CEMENT PROGRAM

SIZE OF HOLE	SIZE OF CASING	WEIGHT PER FOOT	SETTING DEPTH	SACKS OF CEMENT	EST. TOP
15"	11 3/4"	42#, H-40	350'	450	Circulate
11"	8 5/8"	24#, K-55	1520'	750	Circulate
7 7/8"	5 1/2"	15.5#, K-55	4800'	3250	Circulate

Surface Casing: 450 sxs Class "H" w/2% CaCl₂ (15.6 ppg, 1.18 ft³/sx).

Intermediate Casing: 750 sxs Class "H" w/2% CaCl₂ (15.6 ppg, 1.18 ft³/sx).

Production Casing: 3000 sxs Lite Weight w/15# salt, 1/4# flocele/sx (12.54 ppg, 1.83 ft³/sx) followed by 250 sxs Class "H" w/8# salt, 1/4# flocele/sx (15.74 ppg, 1.23 ft³/sx).

APPROVAL VALID FOR 180 DAYS
PERMIT EXPIRES 5/16/83
UNLESS DRILLING UNDERWAY

N51-1611

IN ABOVE SPACE DESCRIBE PROPOSED PROGRAM: IF PROPOSAL IS TO DEEPEN OR PLUG BACK, GIVE DATA ON PRESENT PRODUCTIVE ZONE AND PROPOSED NEW PRODUCTIVE ZONE. GIVE BLOWOUT PREVENTER PROGRAM, IF ANY.

I hereby certify that the information above is true and complete to the best of my knowledge and belief.

Signed R. S. Lane Title Asst. Petr. Engr. Manager Date October 1, 1982
(This space for State Use)

APPROVED BY Eddie Wilson TITLE OIL & GAS INSPECTOR DATE NOV 16 1982
CONDITIONS OF APPROVAL, IF ANY:

NEW MEXICO OIL CONSERVATION COMMISSION
WELL LOCATION AND ACREAGE DEDICATION PLAT

Form C-102
Supersedes C-128
Effective 1-1-65

All distances must be from the outer boundaries of the Section.

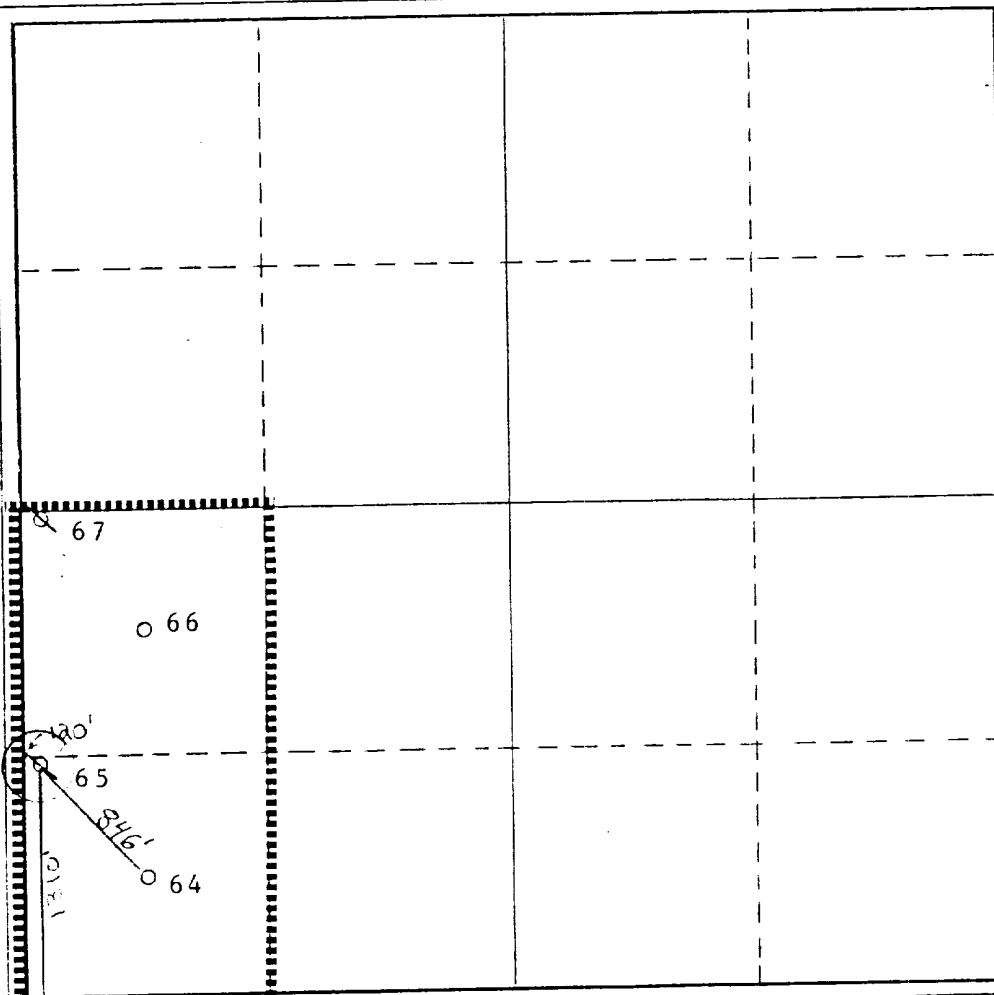
Operator Texaco Inc.			Lease Vacuum Grayburg San Andres Unit		Well No. 65
Unit Letter M	Section 35	Township T-17-S	Range R-34-E	County Lea	
Actual Footage Location of Well: 1310 feet from the South line and 120 feet from the West line					
Ground Level Elev. 4005'	Producing Formation San Andres		Pool Vacuum	Dedicated Acreage: Injection Well	

1. Outline the acreage dedicated to the subject well by colored pencil or hachure marks on the plat below.
2. If more than one lease is dedicated to the well, outline each and identify the ownership thereof (both as to working interest and royalty).
3. If more than one lease of different ownership is dedicated to the well, have the interests of all owners been consolidated by communitization, unitization, force-pooling, etc?

☐ Yes ☐ No If answer is "yes," type of consolidation _____

If answer is "no," list the owners and tract descriptions which have actually been consolidated. (Use reverse side of this form if necessary.) _____

No allowable will be assigned to the well until all interests have been consolidated (by communitization, unitization, forced-pooling, or otherwise) or until a non-standard unit, eliminating such interests, has been approved by the Commission.



CERTIFICATION

I hereby certify that the information contained herein is true and complete to the best of my knowledge and belief.

Name

B. L. Eiland

Position

Division Surveyor

Company

Texaco Inc.

Date

October 1, 1982

I hereby certify that the well location shown on this plat was plotted from field notes of actual surveys made by me or under my supervision, and that the same is true and correct to the best of my knowledge and belief.

Date Surveyed

September 28, 1982

Registered Professional Engineer and/or Land Surveyor

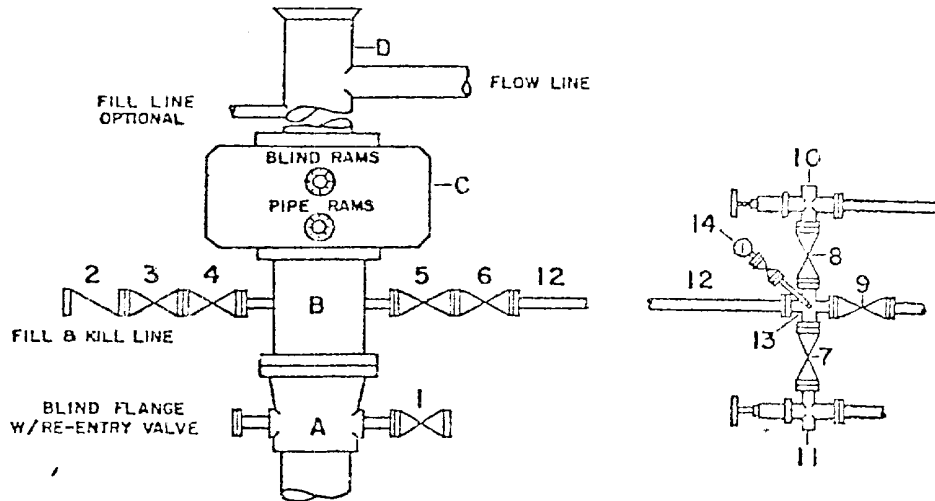
B. L. Eiland

Certificate No.

4386

DRILLING CONTROL CONDITION II-3000 PSI WP

H₂S IRIN REQUIRED
YES _____ NO _____



DRILLING CONTROL

MATERIAL LIST - CONDITION II

- | | |
|------------|---|
| A | Texaco Wellhead |
| B | 3000# W.P. drilling spool with a 2" minimum flanged outlet for kill-line and 3" minimum flanged outlet for choke line |
| C | 3000# W.P. Dual ram type preventer, hydraulic operated with 1" steel, 3000# W.P. control lines (where sub-structure height is adequate, 2-3000# W.P. single ram type preventers may be utilized.) |
| D | Bell nipple with flowline and fill-up outlets. (Kill line may also be used for fill-up line.) |
| 1,3,4, 7,8 | 2" minimum 3000# W.P. flanged full opening steel gate valve, or Halliburton Lo Torc Plug valve. |
| 2 | 2" minimum 3000# W.P. back pressure valve |
| 5,6,9 | 3" minimum 3000# W.P. flanged full opening steel gate valve, or Halliburton Lo Torc Plug valve. |
| 12 | 3" minimum schedule 80, Grade "B", seamless line pipe |
| 13 | 2" minimum x 3" minimum 3000# W.P. flanged cross |
| 10, 11 | 2" minimum 3000# W.P. adjustable choke bodies |
| 14 | Cameron Mud Gauge or equivalent (location optional in choke line.) |

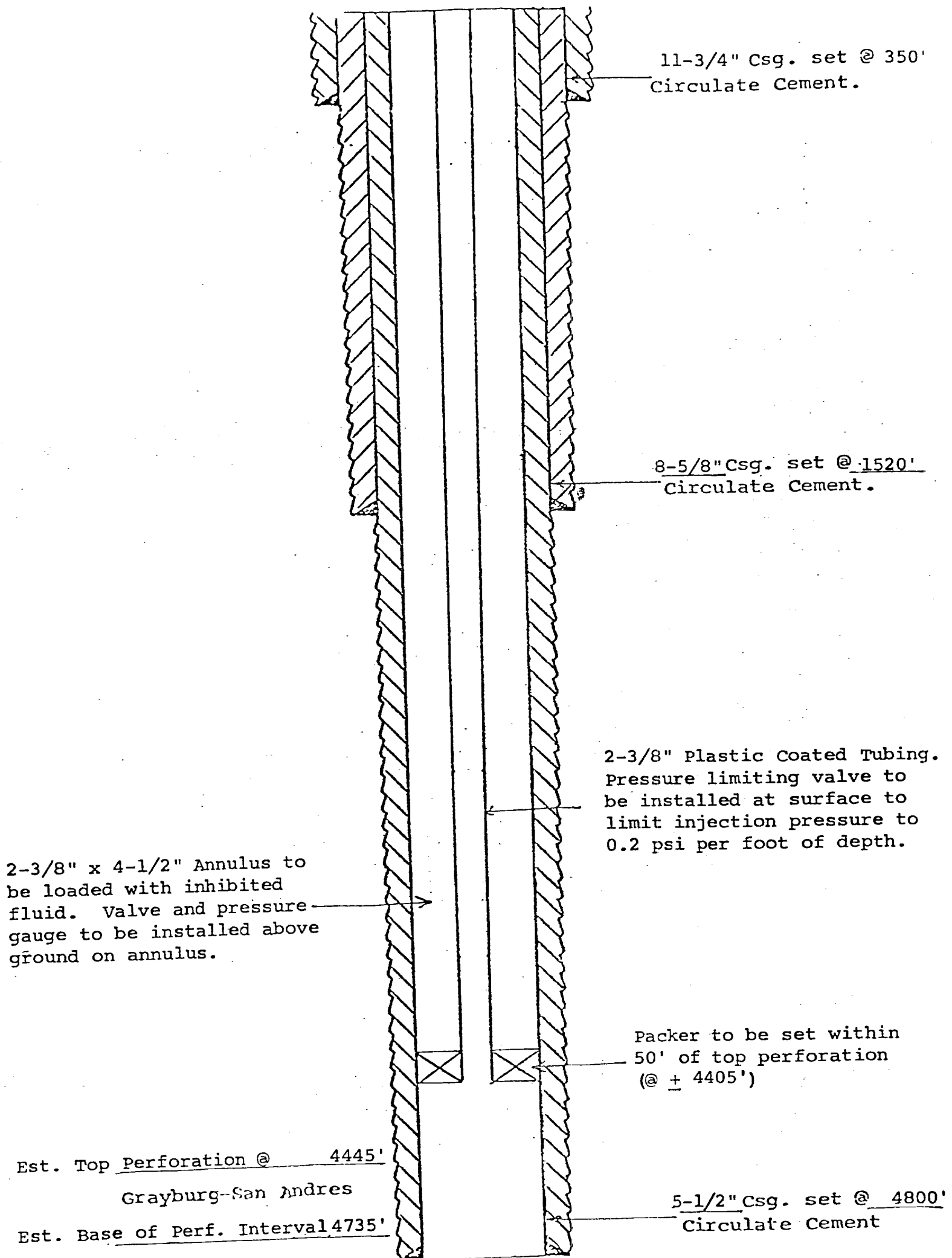


TEXACO, INC.
PRODUCING DEPARTMENT U.S.
MIDLAND, TEXAS



SCALE	DATE	EST. NO.	DRG. NO.
DRAWN BY			
CHECKED BY			
APPROVED BY			

EXHIBIT B



PROPOSED INJECTION WELLS
VACUUM GRAYBURG SAN ANDRES UNIT
WELL NO. 65
VACUUM GRAYBURG-SAN ANDRES FIELD
LEA COUNTY, NEW MEXICO