

NEW MEXICO OIL CONSERVATION COMMISSION
WELL LOCATION AND ACREAGE DEDICATION PLAT

Form C-102
Supersedes C-128
Effective 1-1-65

All distances must be from the outer boundaries of the Section

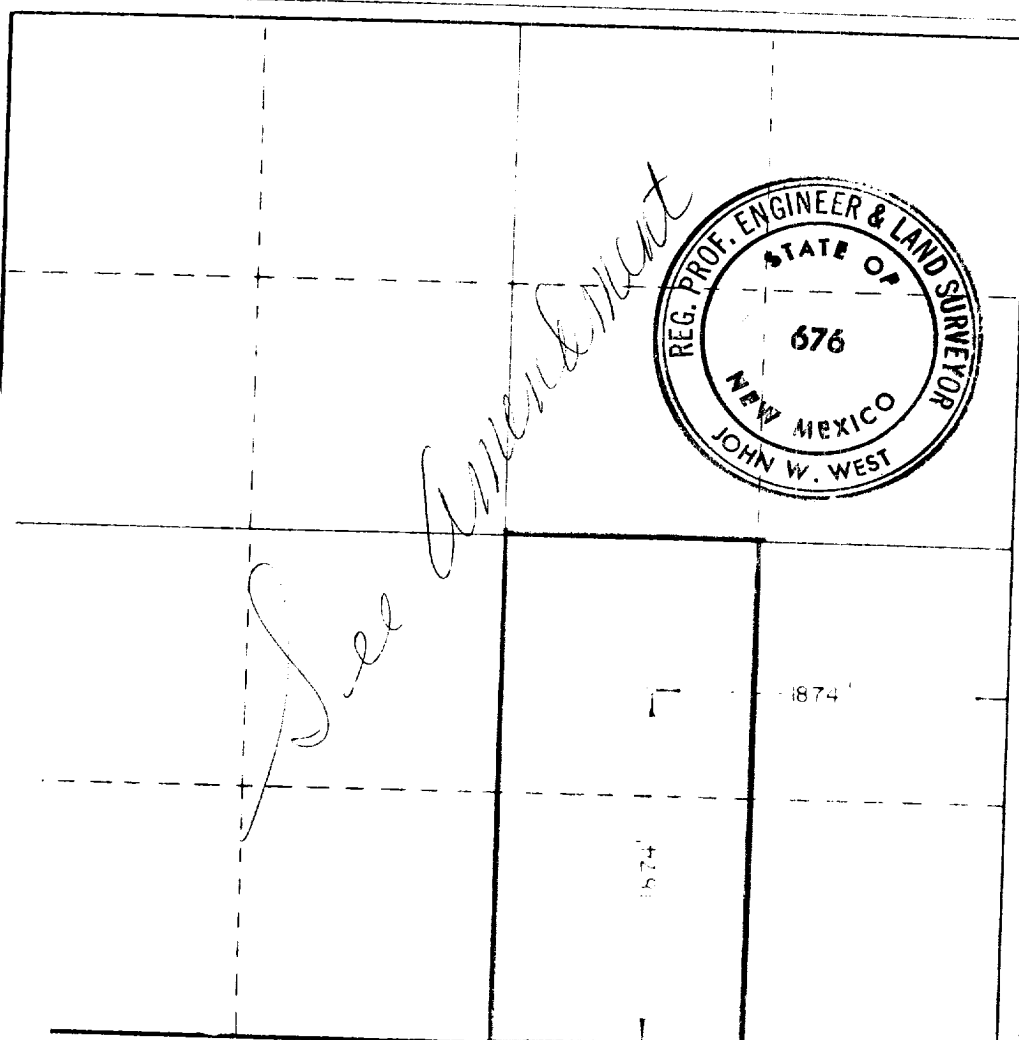
Operator INEXCO Oil Company			Lease Lottie York		Well No. 2
Section J	Section 14	Township 17 South	Range 37 East	County Lea County	
A. True Location of Well: 1874 feet from the South line and 1874 feet from the East line. Elevation Elev. 3732.0 Producing Formation Strawn Post S. Humble City (Strawn) Section Acreage 80 Acres					

1. Outline the acreage dedicated to the subject well by colored pencil or hatchure marks on the plat below.
2. If more than one lease is dedicated to the well, outline each and identify the ownership thereof (both as to working interest and royalty).
3. If more than one lease of different ownership is dedicated to the well, have the interests of all owners been consolidated by communitization, unitization, force-pooling, etc?

☐ Yes ☐ No If answer is "yes," type of consolidation _____

If answer is "no," list the owners and tract descriptions which have actually been consolidated (Use reverse side of this form if necessary.) _____

No allowable will be assigned to the well until all interests have been consolidated (by communitization, unitization, forced-pooling, or otherwise) or until a non-standard unit, eliminating such interests, has been approved by the Commission.



CERTIFICATION

I hereby certify that the information contained herein is true and complete to the best of my knowledge and belief.

Ramona S Gault
Production Technician

Inexco Oil Company

December 22, 1982

I hereby certify that the well location shown on this plat was plotted from field notes of actual surveys made by me or under my supervision, and that the same is true and correct to the best of my knowledge and belief.

Date Surveyed

12/16/82

Registered Professional Engineer and/or Land Surveyor

John W. West

Certificate No. **JOHN W WEST NO. 676**

0 800 1600 2400 3200 4000 4800 5600 6400 7200 8000 8800 9600 10400 11200 12000

RECEIVED
DEC 30 1982
O.C.D.
HOBBS OFFICE

12/31/82
FBI