

UNITED STATES
DEPARTMENT OF THE INTERIOR
BUREAU OF LAND MANAGEMENT

FORM APPROVED
Budget Bureau No. 1004-0135
Expires March 31, 1995

SUNDRY NOTICES AND REPORTS ON WELLS

Do not use this form for proposals to drill or to deepen or reentry to a different reservoir.
Use "APPLICATION FOR PERMIT—" for such proposals

SUBMIT IN TRIPLICATE

1. Type of Well

☐ Oil Well ☐ Gas Well ☒ Other

2. Name of Operator

Mewbourne Oil Company

3. Address and Telephone No.

P.O. Box 5270, Hobbs, NM 88241 (505) 393-5905

4. Location of Well (Footage: Sec., T., R., M., or Survey Description)

330' FSL & 2310' FWL of Sec. 22, T18S, R32E

5. Lease Designation and Serial No.

NM 04371-A

6. If Indian, Allottee or Tribe Name

7. If Unit or CA, Agreement Designation

NMMN 91005X

8. Well Name and No.

QPQASU #13

9. API Well No.

30-025-28149

10. Field and Pool or Exploration Area

Querecho Plains Queens

Associated Sand Unit

Lea Co., NM

12. CHECK APPROPRIATE BOX(S) TO INDICATE NATURE OF NOTICE, REPORT, OR OTHER DATA

TYPE OF SUBMISSION

- ☐ Notice of Intent
☒ Subsequent Report
☐ Final Abandonment Notice

TYPE OF ACTION

- ☐ Abandonment
☐ Recompletion
☐ Plugging Back
☐ Casing Repair
☐ Altering Casing
☐ Other _____
☐ Change of Plans
☐ New Construction
☐ Non-Routine Fracturing
☐ Water Shut-Off
☒ Conversion to Injection
☐ Dispose Water

(Note: Report results of multiple completion on Well Completion or Recompletion Report and Log form.)

13. Describe Proposed or Completed Operations (Clearly state all pertinent details, and give pertinent dates, including estimated date of starting any proposed work. If well is directionally drilled, give subsurface locations and measured and true vertical depths for all markers and zones pertinent to this work.)*

- 11/11/96 MIRU Well Service Rig. LD rods and pump. Tbg. stuck. RU JSI. Cut-off tbg at 4195'. POOH w/tbg.
11/12/96 RIH w/tbg and pkr. Set pkr. at 3773.38'. Loaded and tested annulus to 500 psi. Held OK. Acidized perf's Queen and Penrose (3872'-3900', 4117'-4145') w/3000 gallons 15% NE-FE.
11/13/96 Performed MIT on csg. Chart given to OCD representative. Put well on injection.

WFX-695

14. I hereby certify that the foregoing is true and correct

Signed

Russell R. Rauts

Title

Petroleum Engineer

Date

11/22/96

(This space for Federal or State office use)

Approved by

Conditions of approval, if any

Title

Date

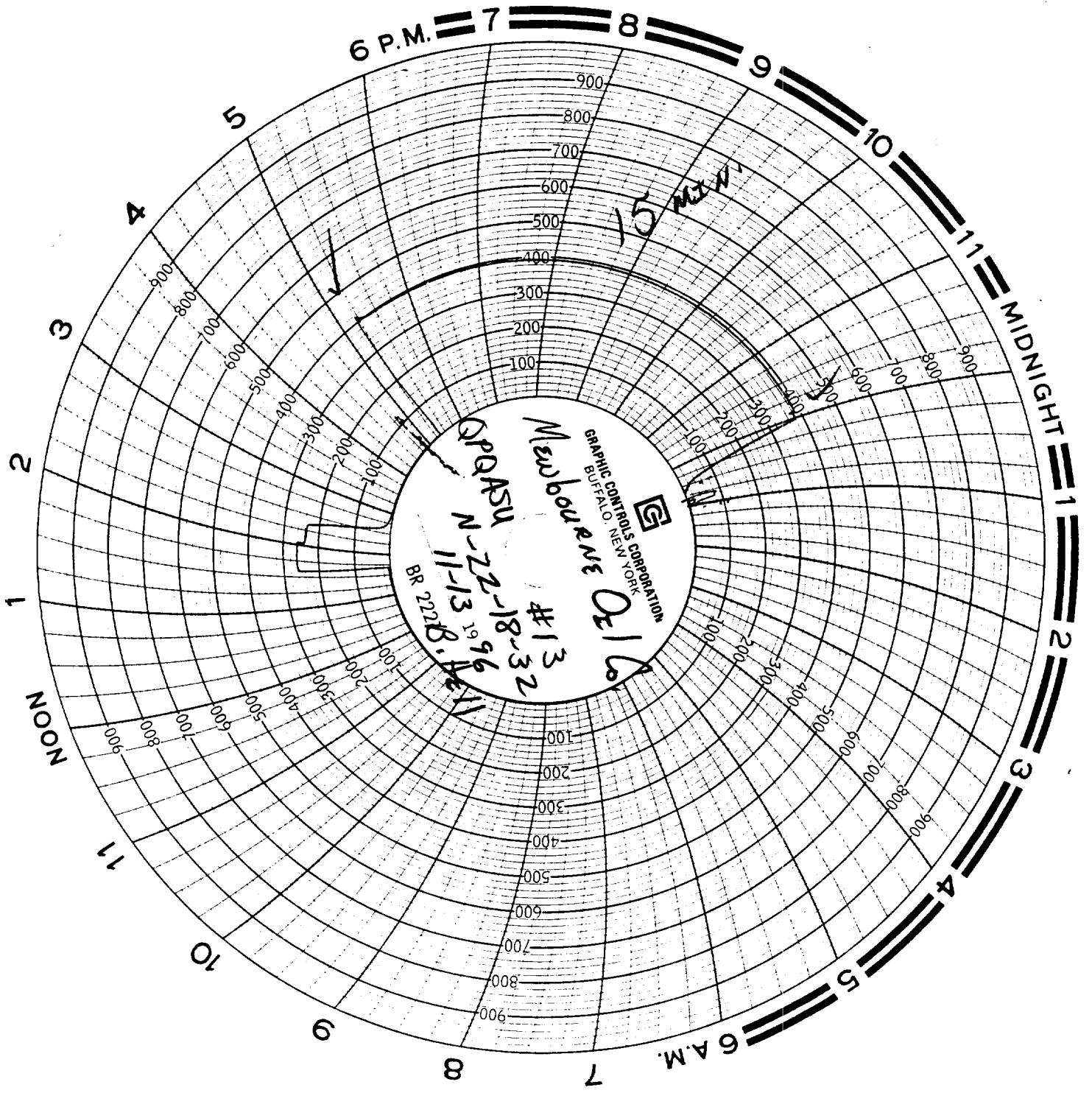
JAN 06 1997

Title 18 U.S.C. Section 1001, makes it a crime for any person knowingly and willfully to make to any department or agency of the United States any false, fictitious or fraudulent statements or representations as to any matter within its jurisdiction.

*See instruction on Reverse Side

WFX

JCBN



6 P.M. 7 8 9

10

11

MIDNIGHT

1

2

3

4

5

6 A.M.

7

8

9

10

11

NOON

1

2

3

4

5

900

800

700

600

500

400

300

200

100

900

800

700

600

500

400

300

200

100

900

800

700

600

500

400

300

200

100

900

800

700

600

500

400

300

200

100

900

800

700

600

500

400

300

200

100

900

800

700

600

500

400

300

200

100

900

800

700

600

500

400

300

200

100

900

800

700

600

500

400

300

200

100

900

800

700

600

500

400

300

200

100

900

800

700

600

500

400

300

200

100

900

800

700

600

500

400

300

200

100

900

800

700

600

500

400

300

200

100

900

800

700

600

500

400

300

200

100

900

800

700

600

500

400

300

200

100

900

800

700

600

500

400

300

200

100

900

800

700

600

500

400

300

200

100

900

800

700

600

500

400

300

200

100

900

800

700

600

500

400

300

200

100

900

800

700

600

500

400

300

200

100

900

800

700

600

500

400

300

200

100

900

800

700

600

500

400

300

200

100

900

800

700

600

500

400

300

200

100

900

800

700

600

500

400

300

200

100

900

800

700

600

500

400

300

200

100

900

800

700

600

500

400

300

200

100

900

800

700

600

500

400

300

200

100

900

800

700

600

500

400

300

200

100

900

800

700

600

500

400

300

200

100

900

800

700

600

500

400

300

200

100

900

800

700

600

500

400

300

200

100

900

800

700

600

500

400

300

200

100

900

800

700

600

500

400

300

200

100

900

800

700

600

500

400

300

200

100

900

800

700

600

50