

NEW MEXICO OIL CONSERVATION COMMISSION
WELL LOCATION AND ACREAGE DEDICATION PLAT

Form C-102
 Supersedes C-128
 Effective 1-1-65

All distances must be from the outer boundaries of the Section

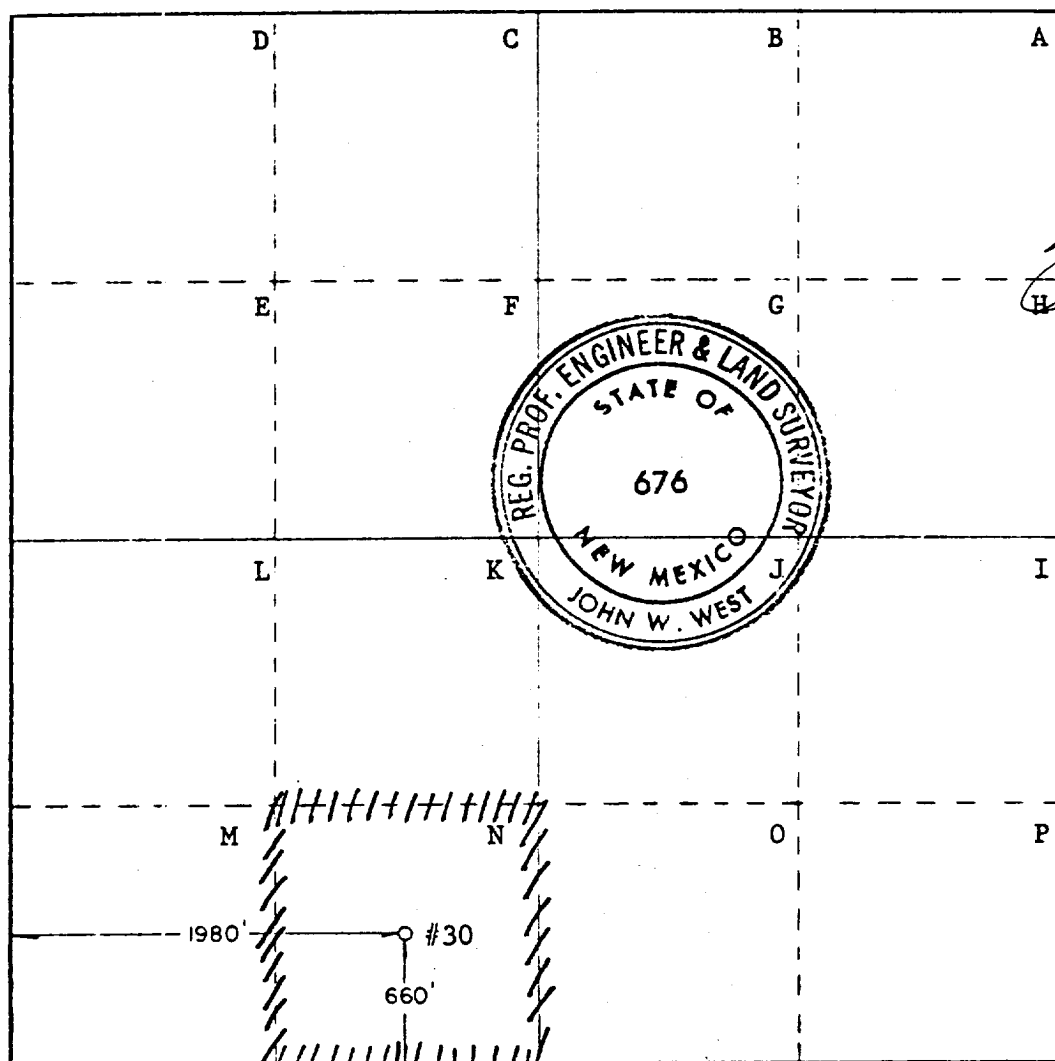
Phillips Petroleum Company			Lease Lea		Well No. 30
Unit Letter N	Section 19	Township 17 South	Range 34 East	County Lea	
Actual Well Location of Well:					
660		feet from the south line and		1980	
feet from the		west		line	
Ground Elev. Elev. 4097.4'	Producing Formation Grayburg/San Andres	Pool Vacuum Grayburg/San Andres	Dedicated Acreage: 40 Acres		

- 1 Outline the acreage dedicated to the subject well by colored pencil or hatchure marks on the plat below.
- 2 If more than one lease is dedicated to the well, outline each and identify the ownership thereof (both as to working interest and royalty)
- 3 If more than one lease of different ownership is dedicated to the well, have the interests of all owners been consolidated by communitization, unitization, force-pooling, etc?

☐ Yes ☐ No If answer is "yes," type of consolidation _____

If answer is "no," list the owners and tract descriptions which have actually been consolidated (Use reverse side of this form if necessary.) _____

No allowable will be assigned to the well until all interests have been consolidated (by communitization, unitization, forced-pooling, or otherwise) or until a non-standard unit, eliminating such interests, has been approved by the Commission.



CERTIFICATION

I hereby certify that the information contained herein is true and complete to the best of my knowledge and belief.

W. J. Mueller
W. J. Mueller

Senior Engineering Specialist

Phillips Petroleum Company

I hereby certify that the well location shown on this plat was plotted from field notes of actual surveys made by me or under my supervision, and that the same is true and correct to the best of my knowledge and belief

Jan. 26, 1983

Registered Professional Engineer
 and/or Land Surveyor

John W. West
 Certificate No
John W. West N.M. Reg. L.S. No. 676

330 660 990 1320 1650 1980 2310 2640 2000 1800 1600 1400 1200 1000 800

RECEIVED

FEB 9 1983

O.C.D.
HOBBS OFFICE