

NEW MEXICO OIL CONSERVATION COMMISSION
WELL LOCATION AND ACREAGE DEDICATION PLAT

Form C-102
Super des C.
Effective 1-1-81

All distances must be from the outer boundaries of the Section

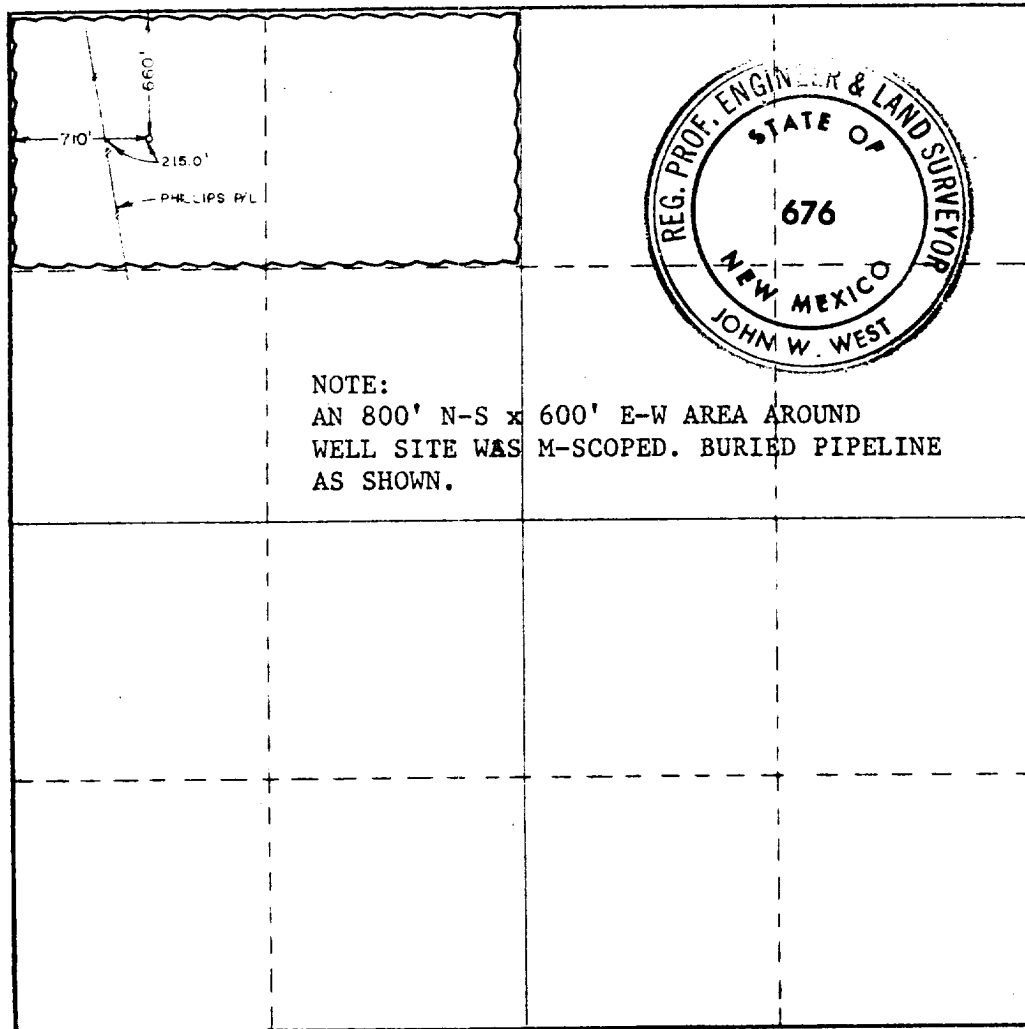
Operator AMOCO PRODUCTION COMPANY			Lease STATE "MX"		Well No. 1
Unit Letter D	Section 15	Township 19 SOUTH	Range 35 EAST	County LEA	
Actual Footage Location of Well: 660 feet from the NORTH line and 710 feet from the WEST line					
Ground Level Elev. 3783.3	Producing Formation Bone Springs		Pool Scharb Bone Springs		Dedicated Acreage: 80 Acres

1. Outline the acreage dedicated to the subject well by colored pencil or hachure marks on the plat below.
2. If more than one lease is dedicated to the well, outline each and identify the ownership thereof (both as to working interest and royalty).
3. If more than one lease of different ownership is dedicated to the well, have the interests of all owners been consolidated by communitization, unitization, force-pooling, etc?

☐ Yes ☐ No If answer is "yes," type of consolidation _____

If answer is "no," list the owners and tract descriptions which have actually been consolidated. (Use reverse side of this form if necessary.) _____

No allowable will be assigned to the well until all interests have been consolidated (by communitization, unitization, forced-pooling, or otherwise) or until a non-standard unit, eliminating such interests, has been approved by the Commission.



CERTIFICATION

I hereby certify that the information contained herein is true and complete to the best of my knowledge and belief.

Name *Charles M. Loring*
Position
Administrative Analyst

Company
Amoco Production Company

Date
June 17, 1983

I hereby certify that the well location shown on this plat was plotted from field notes of actual surveys made by me or under my supervision, and that the same is true and correct to the best of my knowledge and belief.

Date Surveyed
2/22/83

Registered Professional Engineer
and/or Land Surveyor

John W. West
Certificate No

JOHN W. WEST NO. 676

0 330 660 990 1320 1650 1980 2310 2640 2000 1800 1600 1400 1200 1000 800 0

RECEIVED

JUN 17 1983

O.C.D.
HOBBS OFFICE