

NEW MEXICO OIL CONSERVATION COMMISSION  
WELL LOCATION AND ACREAGE DEDICATION PLAT

Form C-102  
Supersedes C-128  
Effective 1-1-65

All distances must be from the outer boundaries of the Section

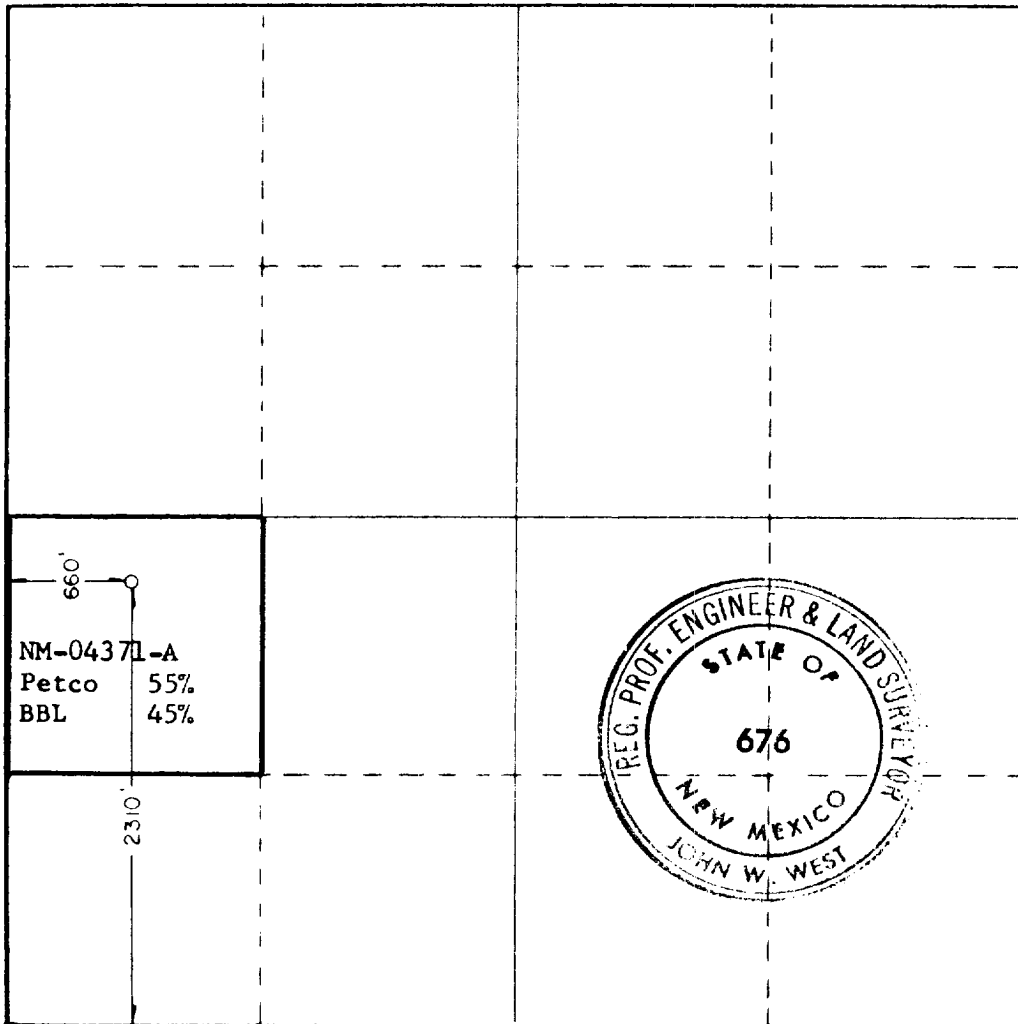
Operator <b>Petroleum Corp. of Texas</b>		Lease <b>Fed. Q</b>		Well No. <b>5</b>
Unit Letter <b>L</b>	Section <b>22</b>	Township <b>18 South</b>	Range <b>32 East</b>	County <b>Lea</b>
Actual Footage Location of Well: <b>2310</b> feet from the <b>south</b> line and <b>660</b> feet from the <b>west</b> line				
Ground Level Elev. <b>3761.6'</b>	Producing Formation <b>Queen</b>	Pool <b>Querecho Plains</b>	Dedicated Acreage: <b>40</b> Acres	

1. Outline the acreage dedicated to the subject well by colored pencil or hachure marks on the plat below.
2. If more than one lease is dedicated to the well, outline each and identify the ownership thereof (both as to working interest and royalty).
3. If more than one lease of different ownership is dedicated to the well, have the interests of all owners been consolidated by communitization, unitization, force-pooling, etc?

☐ Yes ☐ No If answer is "yes," type of consolidation \_\_\_\_\_

If answer is "no," list the owners and tract descriptions which have actually been consolidated. (Use reverse side of this form if necessary.) \_\_\_\_\_

No allowable will be assigned to the well until all interests have been consolidated (by communitization, unitization, forced-pooling, or otherwise) or until a non-standard unit, eliminating such interests, has been approved by the Commission.



CERTIFICATION

I hereby certify that the information contained herein is true and complete to the best of my knowledge and belief.

*George R. Smith*  
Name

George R. Smith

Position

Agent for:

Company

Petroleum Corp. of Texas

Date

March 18, 1983

I hereby certify that the well location shown on this plat was plotted from field notes of actual surveys made by me or under my supervision, and that the same is true and correct to the best of my knowledge and belief.

Date Surveyed

March 7, 1983

Registered Professional Engineer and/or Land Surveyor

*John W. West*

Certificate No.

John W. West, NM L.S. 676

0 140 280 420 560 700 840 980 1120 1260 1400 1540 1680 1820 1960 2100 2240 2380 2520 2660 2800 2940 3080 3220 3360 3500 3640 3780 3920 4060 4200 4340 4480 4620 4760 4900 5040 5180 5320 5460 5600 5740 5880 6020 6160 6300 6440 6580 6720 6860 7000 7140 7280 7420 7560 7700 7840 7980 8120 8260 8400 8540 8680 8820 8960 9100 9240 9380 9520 9660 9800 9940 10080 10220 10360 10500 10640 10780 10920 11060 11200 11340 11480 11620 11760 11900 12040 12180 12320 12460 12600 12740 12880 13020 13160 13300 13440 13580 13720 13860 14000 14140 14280 14420 14560 14700 14840 14980 15120 15260 15400 15540 15680 15820 15960 16100 16240 16380 16520 16660 16800 16940 17080 17220 17360 17500 17640 17780 17920 18060 18200 18340 18480 18620 18760 18900 19040 19180 19320 19460 19600 19740 19880 20020 20160 20300 20440 20580 20720 20860 21000 21140 21280 21420 21560 21700 21840 21980 22120 22260 22400 22540 22680 22820 22960 23100 23240 23380 23520 23660 23800 23940 24080 24220 24360 24500 24640 24780 24920 25060 25200 25340 25480 25620 25760 25900 26040 26180 26320 26460 26600 26740 26880 27020 27160 27300 27440 27580 27720 27860 28000 28140 28280 28420 28560 28700 28840 28980 29120 29260 29400 29540 29680 29820 29960 30100 30240 30380 30520 30660 30800 30940 31080 31220 31360 31500 31640 31780 31920 32060 32200 32340 32480 32620 32760 32900 33040 33180 33320 33460 33600 33740 33880 34020 34160 34300 34440 34580 34720 34860 35000 35140 35280 35420 35560 35700 35840 35980 36120 36260 36400 36540 36680 36820 36960 37100 37240 37380 37520 37660 37800 37940 38080 38220 38360 38500 38640 38780 38920 39060 39200 39340 39480 39620 39760 39900 40040 40180 40320 40460 40600 40740 40880 41020 41160 41300 41440 41580 41720 41860 42000 42140 42280 42420 42560 42700 42840 42980 43120 43260 43400 43540 43680 43820 43960 44100 44240 44380 44520 44660 44800 44940 45080 45220 45360 45500 45640 45780 45920 46060 46200 46340 46480 46620 46760 46900 47040 47180 47320 47460 47600 47740 47880 48020 48160 48300 48440 48580 48720 48860 49000 49140 49280 49420 49560 49700 49840 49980 50120 50260 50400 50540 50680 50820 50960 51100 51240 51380 51520 51660 51800 51940 52080 52220 52360 52500 52640 52780 52920 53060 53200 53340 53480 53620 53760 53900 54040 54180 54320 54460 54600 54740 54880 55020 55160 55300 55440 55580 55720 55860 56000 56140 56280 56420 56560 56700 56840 56980 57120 57260 57400 57540 57680 57820 57960 58100 58240 58380 58520 58660 58800 58940 59080 59220 59360 59500 59640 59780 59920 60060 60200 60340 60480 60620 60760 60900 61040 61180 61320 61460 61600 61740 61880 62020 62160 62300 62440 62580 62720 62860 63000 63140 63280 63420 63560 63700 63840 63980 64120 64260 64400 64540 64680 64820 64960 65100 65240 65380 65520 65660 65800 65940 66080 66220 66360 66500 66640 66780 66920 67060 67200 67340 67480 67620 67760 67900 68040 68180 68320 68460 68600 68740 68880 69020 69160 69300 69440 69580 69720 69860 70000 70140 70280 70420 70560 70700 70840 70980 71120 71260 71400 71540 71680 71820 71960 72100 72240 72380 72520 72660 72800 72940 73080 73220 73360 73500 73640 73780 73920 74060 74200 74340 74480 74620 74760 74900 75040 75180 75320 75460 75600 75740 75880 76020 76160 76300 76440 76580 76720 76860 77000 77140 77280 77420 77560 77700 77840 77980 78120 78260 78400 78540 78680 78820 78960 79100 79240 79380 79520 79660 79800 79940 80080 80220 80360 80500 80640 80780 80920 81060 81200 81340 81480 81620 81760 81900 82040 82180 82320 82460 82600 82740 82880 83020 83160 83300 83440 83580 83720 83860 84000 84140 84280 84420 84560 84700 84840 84980 85120 85260 85400 85540 85680 85820 85960 86100 86240 86380 86520 86660 86800 86940 87080 87220 87360 87500 87640 87780 87920 88060 88200 88340 88480 88620 88760 88900 89040 89180 89320 89460 89600 89740 89880 90020 90160 90300 90440 90580 90720 90860 91000 91140 91280 91420 91560 91700 91840 91980 92120 92260 92400 92540 92680 92820 92960 93100 93240 93380 93520 93660 93800 93940 94080 94220 94360 94500 94640 94780 94920 95060 95200 95340 95480 95620 95760 95900 96040 96180 96320 96460 96600 96740 96880 97020 97160 97300 97440 97580 97720 97860 98000 98140 98280 98420 98560 98700 98840 98980 99120 99260 99400 99540 99680 99820 100000

RECEIVED  
APR 6 1983  
FBI  
HONOLULU OFFICE