

NEW MEXICO OIL CONSERVATION COMMISSION
WELL LOCATION AND ACREAGE DEDICATION PLAT

Form C-102
Supersedes C-128
Effective 1-1-65

All distances must be from the outer boundaries of the Section

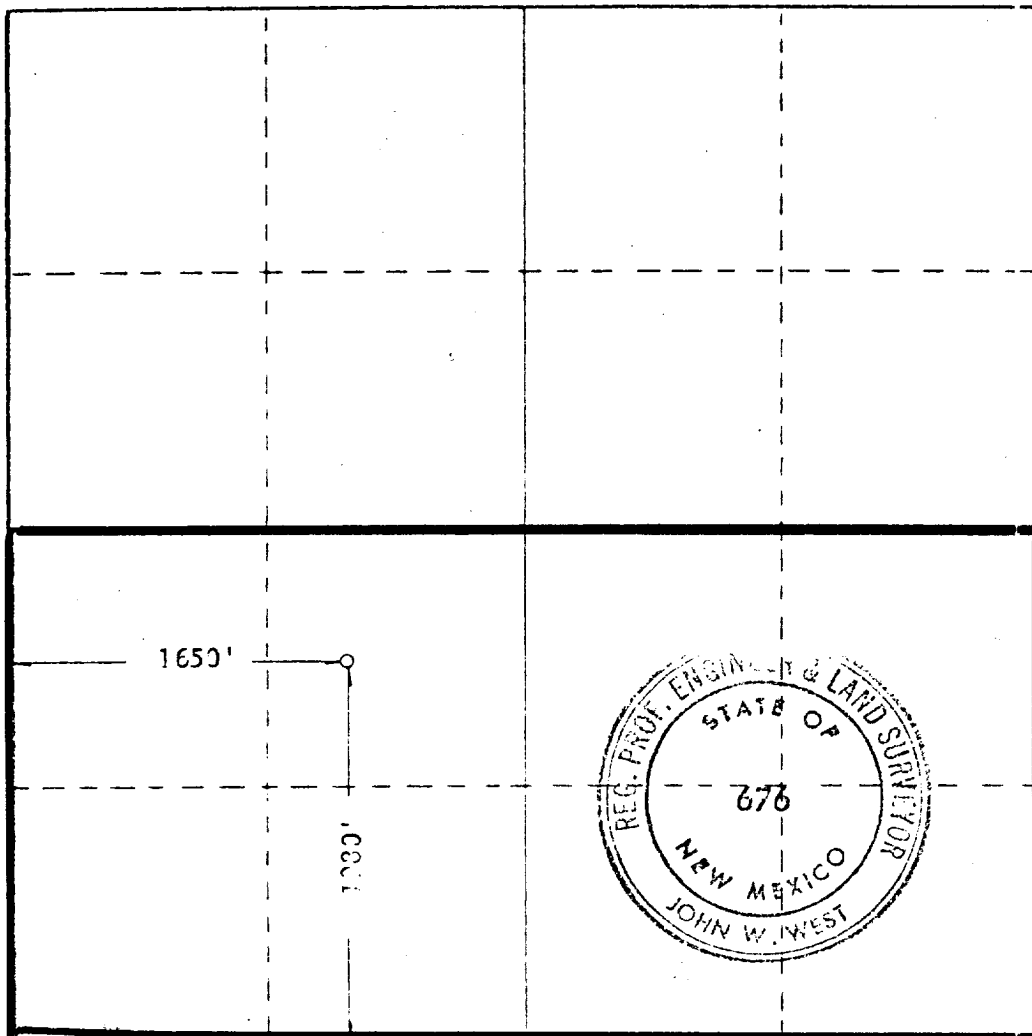
Operator PENNZOIL COMPANY		Lease MESCALERO 25 FED. CO.		Well No. 1
Section 29	Township 10 SOUTH	Range 34 EAST	County LEA	
Actual Surface Location of Well: 1980 feet from the SOUTH line and 1650 feet from the WEST line				
Ground Surface Elev. 3663.7	Producing Formation MORROW	Foot QUAIL RIDGE (MORROW)	Dedicated Acreage: 320 Acres	

- Outline the acreage dedicated to the subject well by colored pencil or hatchure marks on the plat below.
- If more than one lease is dedicated to the well, outline each and identify the ownership thereof (both as to working interest and royalty).
- If more than one lease of different ownership is dedicated to the well, have the interests of all owners been consolidated by communitization, unitization, force-pooling, etc?

☒ Yes ☐ No If answer is "yes," type of consolidation COMMUNITIZATION

If answer is "no," list the owners and tract descriptions which have actually been consolidated. (Use reverse side of this form if necessary.)

No allowable will be assigned to the well until all interests have been consolidated (by communitization, unitization, forced-pooling, or otherwise) or until a non-standard unit, eliminating such interests, has been approved by the Commission.



CERTIFICATION

I hereby certify that the information contained herein is true and complete to the best of my knowledge and belief.

L. C. Mangum

Name
OPERATIONS SUPERINTENDENT

Position
PENNZOIL COMPANY

Company

Date
3-24-83

I hereby certify that the well location shown on this plat was plotted from field notes of actual surveys made by me or under my supervision and that the same is true and correct to the best of my knowledge and belief.

Date Surveyed
3-25-1983

Registered Professional Engineer and Land Surveyor

John W. West

Certificate No
576



RECEIVED

JUL 18 1983

O.C.D.
HOBBS OFFICE