

L CONSERVATION DIVISION
P. O. BOX 2088
SANTA FE, NEW MEXICO 87501Form C-101
Revised 10-1-78

NO. OF COPIES RECEIVED	
DISTRIBUTION	
SANTA FE	
FILE	
U.S.G.S.	
LAND OFFICE	
OPERATOR	

5A. Indicate Type of Lease
STATE ☒ FEE ☐

5. State Oil & Gas Lease No.

B3385-8712

APPLICATION FOR PERMIT TO DRILL, DEEPEN, OR PLUG BACK

a. Type of Work

DRILL ☒DEEPEN ☐PLUG BACK ☐

b. Type of Well

OIL WELL ☒GAS WELL ☐

OTHER

SINGLE ZONE ☐MULTIPLE ZONE ☐

c. Name of Operator

CASA PETROLEUM, INCORPORATED

d. Address of Operator

105 North 6th Street, Artesia, New Mexico 88210

e. Location of Well

UNIT LETTER B

LOCATED 990

FEET FROM THE

North

LINE

2310

FEET FROM THE

East

LINE OF SEC. 21

TWP. 17S

RGE. 34E

NMPM

7. Unit Agreement Name

8. Farm or Lease Name

Gulf State

9. Well No.

1

10. Field and Pool, or Wildcat

Vaccum Grayburg/San Andres

12. County

LEA

11. Elevations (Show whether D.F., K.I., etc.)

4061.0 G/L

21A. Kind & Status Plug. Bond

Single Well

19. Proposed Depth

5000

19A. Formation

SanAndres

20. Rotary or C.T.

Rotary

22. Approx. Date Work will start

Aug. 22, 1983

3.

PROPOSED CASING AND CEMENT PROGRAM

SIZE OF HOLE	SIZE OF CASING	WEIGHT PER FOOT	SETTING DEPTH	SACKS OF CEMENT	EST. TOP
9 7/8	7"	20#	1500'	Circulate	
7 7/8	4 1/2"	10.5#	5000	380	

Rig up drill 9 7/8 hole to depth of 1500'

Run 1500' of 7" casing

Circulate cement to surface - WOC 18 hours.

Test casing to 1000# for 30 minutes; if satisfactory - drill to T.D.

Run CNL-FDC and DIL from surface to T. D.

Run 5000' of 4 1/2" casing and cement w/380SX.

Perforating and treating will be based on log evaluation.

APPROVAL VALID FOR 180 DAYS
PERMIT EXPIRES 2/22/84
UNLESS DRILLING UNDERWAY

ABOVE SPACE DESCRIBE PROPOSED PROGRAM IF PROPOSAL IS TO DEEPEN OR PLUG BACK, GIVE DATA ON PRESENT PRODUCTIVE ZONE AND PROPOSED NEW PRODUCTION ZONE. GIVE BLOWOUT PREVENTER PROGRAM, IF ANY.

I hereby certify that the information above is true and complete to the best of my knowledge and belief.

Signed Jerry Sexton Title President Date August 15, 1983
RANGER G. KARE

(This space for State Use)

ORIGINAL SIGNED BY JERRY SEXTON

DISTRICT I SUPERVISOR

PROVED BY _____ TITLE _____ DATE _____

CONDITIONS OF APPROVAL, IF ANY:

AUG 22 1983

08-12-007

RECEIVED
AUG 17 1983
O.C.D.
HOBBS OFFICE

**MEXICO OIL CONSERVATION COMMISSION
WELL LOCATION AND ACREAGE DEDICATION PLAT**

Form C-102
Supersedes C-128
Effective 1-1-65

All distances must be from the outer boundaries of the Section.

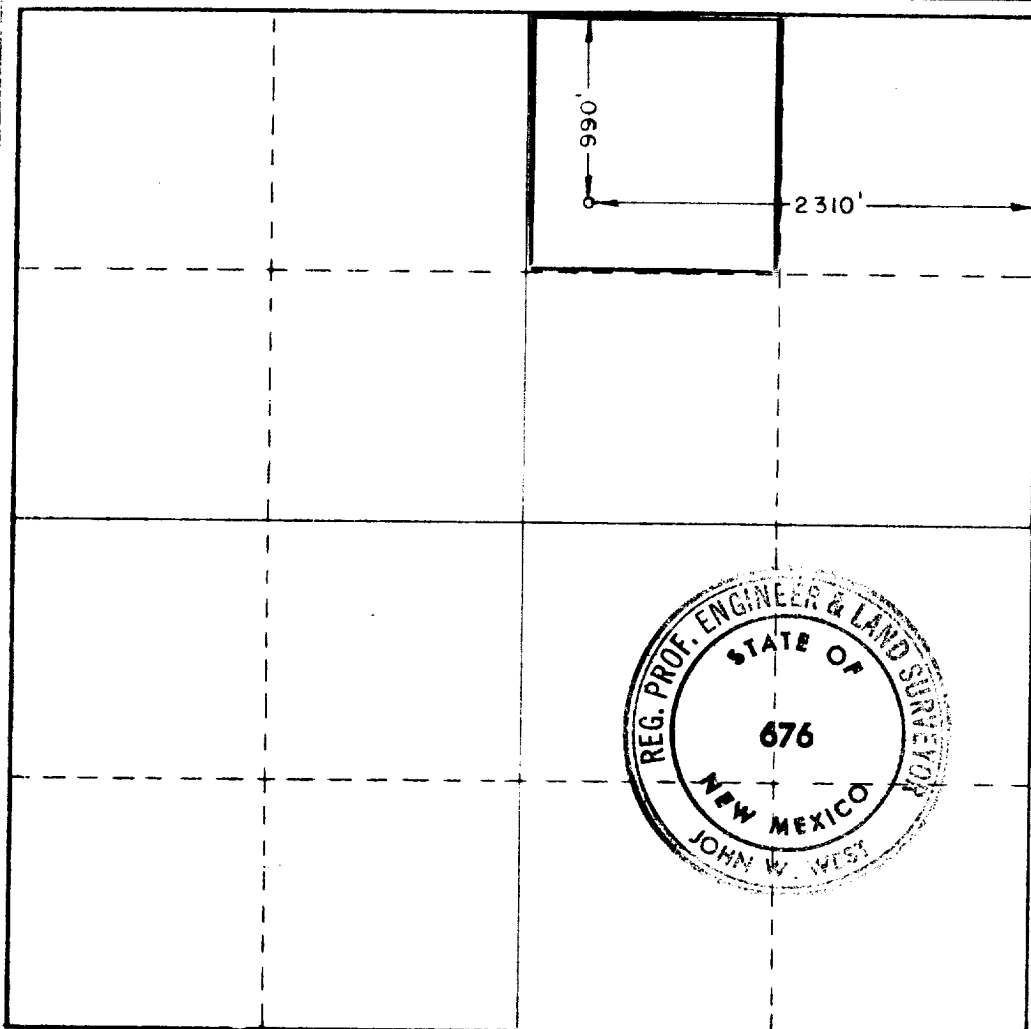
Operator CASA PETROLEUM INC.			Lease GULF STATE		Well No. 1
Unit Letter B	Section 21	Township 17 SOUTH	Range 34 EAST	County LEA	
Actual Footage Location of Well: <div style="display: flex; justify-content: space-between;"> 990 feet from the NORTH line and 2310 feet from the EAST line </div>					
Ground Level Elev. 4061.0	Producing Formation San Andres	Pool Vacuum, Grayburg, San ANDres		Dedicated Acreage: 80 40 Acres	

1. Outline the acreage dedicated to the subject well by colored pencil or hachure marks on the plat below.
2. If more than one lease is dedicated to the well, outline each and identify the ownership thereof (both as to working interest and royalty).
3. If more than one lease of different ownership is dedicated to the well, have the interests of all owners been consolidated by communitization, unitization, force-pooling, etc?

☐ Yes ☐ No If answer is "yes," type of consolidation _____

If answer is "no," list the owners and tract descriptions which have actually been consolidated. (Use reverse side of this form if necessary.) _____

No allowable will be assigned to the well until all interests have been consolidated (by communitization, unitization, forced-pooling, or otherwise) or until a non-standard unit, eliminating such interests, has been approved by the Commission.



CERTIFICATION

I hereby certify that the information contained herein is true and complete to the best of my knowledge and belief.

Dary L. Etter

Name
Executive Vice-President

Position
CASA PETROLEUM, INC.

Company

Date
August 16, 1983

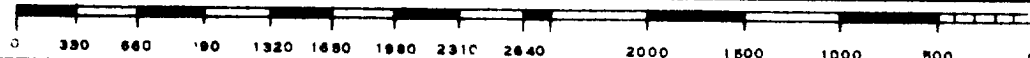
I hereby certify that the well location shown on this plat was plotted from field notes of actual surveys made by me or under my supervision, and that the same is true and correct to the best of my knowledge and belief.

Date Surveyed
8/16/83

Registered Professional Engineer and or Land Surveyor

John W. West

Certificate No. **JOHN W. WEST, 676**
RONALD J. EIDSON, 3239



171

RECEIVED

AUG 17 1983

O.C.D.
HOBBS OFFICE

171