

COPIES RECEIVED	
DISTRIBUTION	
STATE	
FED.	
U.S.	
LAND OFFICE	
OPERATOR	

5A. Indicate Type of Lease
STATE <input checked="" type="checkbox"/> FEE <input type="checkbox"/>
5. State Oil & Gas Lease No.
E-8712

APPLICATION FOR PERMIT TO DRILL, DEEPEN, OR PLUG BACK

Type of Work		7. Unit Agreement Name	
Type of Well		8. Farm or Lease Name	
DRILL <input checked="" type="checkbox"/> DEEPEN <input type="checkbox"/> PLUG BACK <input type="checkbox"/>		CASA STATE	
SINGLE ZONE <input type="checkbox"/> MULTIPLE ZONE <input type="checkbox"/>		9. Well No.	
NAME of Operator		4	
CASA PETROLEUM, INCORPORATED		10. Field and Pool, or Well	
Address of Operator		Vacuum #18A	
105 North 6th Street, Artesia, New Mexico 88210			
Location of Well		17. County	
UNIT LETTER G LOCATED 2310 FEET FROM THE North LINE		LEA	
2310 FEET FROM THE East LINE OF SEC. 28 TWP. 17S RCE. 34E NMPM			
19. Proposed Depth		19A. Formation	19B. Rotary or C.T.
5200' 5000'		San Andres	Rotary
20. Remarks (show whether DE, RE, etc.)		21A. Kind & Status Plug. Bond	21B. Drilling Contractor
4050 C/I		Single Well	Salazar Bros.
		22. Approx. Date Work will start	
		Aug. 22, 1983	

PROPOSED CASING AND CEMENT PROGRAM

SIZE OF HOLE	SIZE OF CASING	WEIGHT PER FOOT	SETTING DEPTH	SACKS OF CEMENT	EST. TOP
12 1/4	8 5/8	24#	1500	850	
7 7/8	4 1/2	10.5#	4900	380	

Run up drill 12 1/2" hole to depth of 1500'

Run 1500' of 8 5/8" casing

Cement with 850 SX and circulated CMT to surface-WOC 18 hours.

Test casing to 1000# for 30 minutes; if satisfactory - drill to T.D.

Run CNC-FDC and DLL from surface to T.D., if log analysis indicates possible oil production, will run 5200' of 4 1/2" casing and cement w/380SX.

Perforating and treating will be based on log evaluation.

APPROVAL VALID FOR 180 DAYS
PERMIT EXPIRES 3/1/84
UNLESS DRILLING UNDERWAY

A. ABOVE SPACE DESCRIBE PROPOSED PROGRAM; IF PROPOSAL IS TO DEEPEN OR PLUG BACK, GIVE DATA ON PRESENT PRODUCTIVE ZONE AND PROPOSED NEW PRODUCTION ZONE. LIVE BLOWOUT PREVENTER PROGRAM, IF ANY.

I hereby certify that the information above is true and complete to the best of my knowledge and belief.

Signed Ranger C. KARR Title President Date August 10, 1983
(This space for State Use)

ORIGINAL SIGNED BY JERRY SEXTON

DISTRICT SUPERVISOR

PHOTO BY _____ DATE _____
NOTATIONS OF APPROVAL, IF ANY: _____

SEP 1 1983

RECEIVED
AUG 31 1983
O.C.D.
HOBBS OFFICE

NEW MEXICO OIL CONSERVATION COMMISSION
WELL LOCATION AND ACREAGE DEDICATION PLAT

Form C-102
Supersedes C-128
Effective 1-1-65

All distances must be from the outer boundaries of the Section

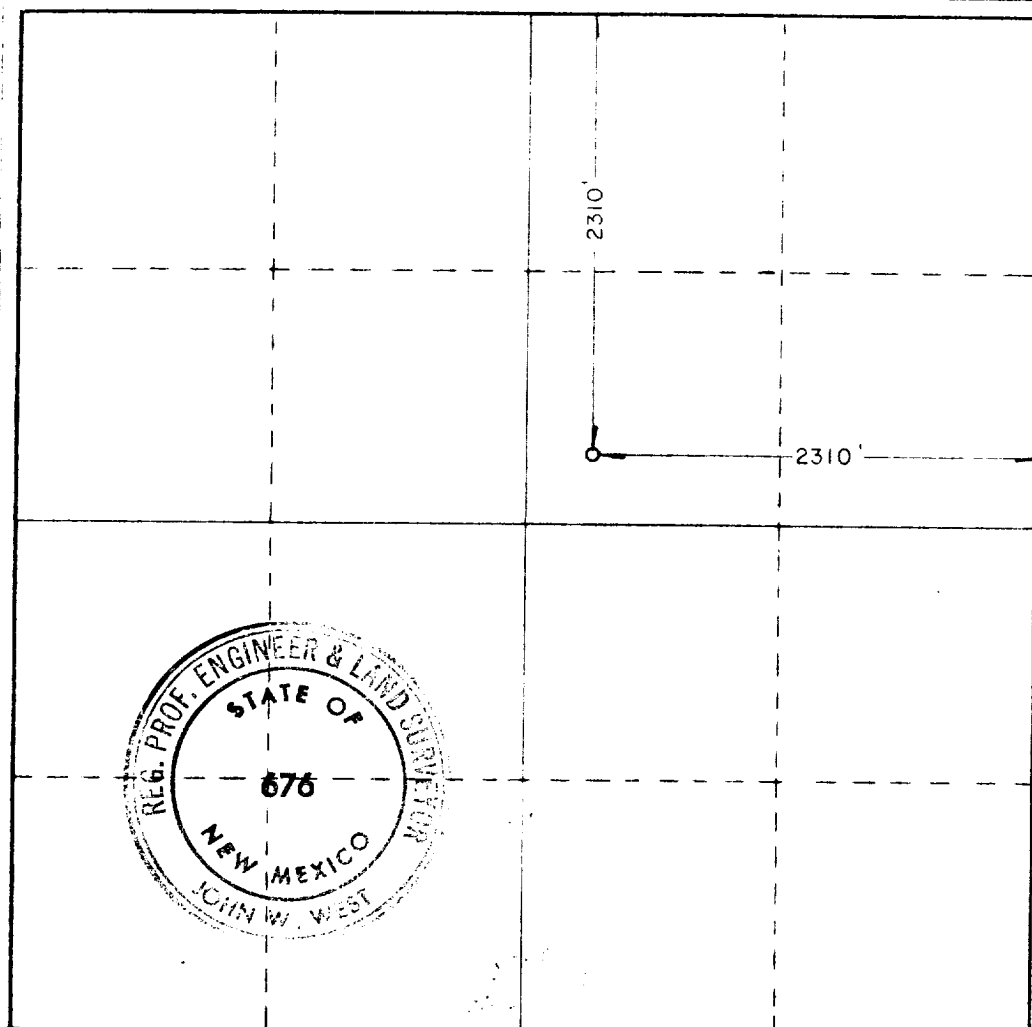
Operator Casa Petroleum, Inc.			Lease Casa State			Well No. 4		
Tract Letter G	Section 28	Township 17 South		Range 34 East	County Lea			
Actual Footage Location of Well: 2310 feet from the north line and 2310 feet from the east line								
Ground Level Elev. 4050.0'		Producing Formation San Andres			Pool Vacuum, Grayburg, San Andres		Dedicated Acreage: 40 Acres	

1. Outline the acreage dedicated to the subject well by colored pencil or hachure marks on the plat below.
2. If more than one lease is dedicated to the well, outline each and identify the ownership thereof (both as to working interest and royalty).
3. If more than one lease of different ownership is dedicated to the well, have the interests of all owners been consolidated by communitization, unitization, force-pooling, etc?

☐ Yes ☒ No If answer is "yes," type of consolidation _____

If answer is "no," list the owners and tract descriptions which have actually been consolidated. (Use reverse side of this form if necessary.) Casa Petroleum, Inc. SW 1/4 NE 1/4 Section 28, T17S, R34E, Lea Ctry NM

No allowable will be assigned to the well until all interests have been consolidated (by communitization, unitization, forced-pooling, or otherwise) or until a non-standard unit, eliminating such interests, has been approved by the Commission.



CERTIFICATION

I hereby certify that the information contained herein is true and complete to the best of my knowledge and belief.

Ranger C. Karr

Name
Ranger C. Karr

Position
President

Company
Casa Petroleum, Inc.

Date
8-10-83

I hereby certify that the well location shown on this plat was plotted from field notes of actual surveys made by me or under my supervision, and that the same is true and correct to the best of my knowledge and belief.

Date Surveyed
July 20, 1983

Registered Professional Engineer and/or Land Surveyor

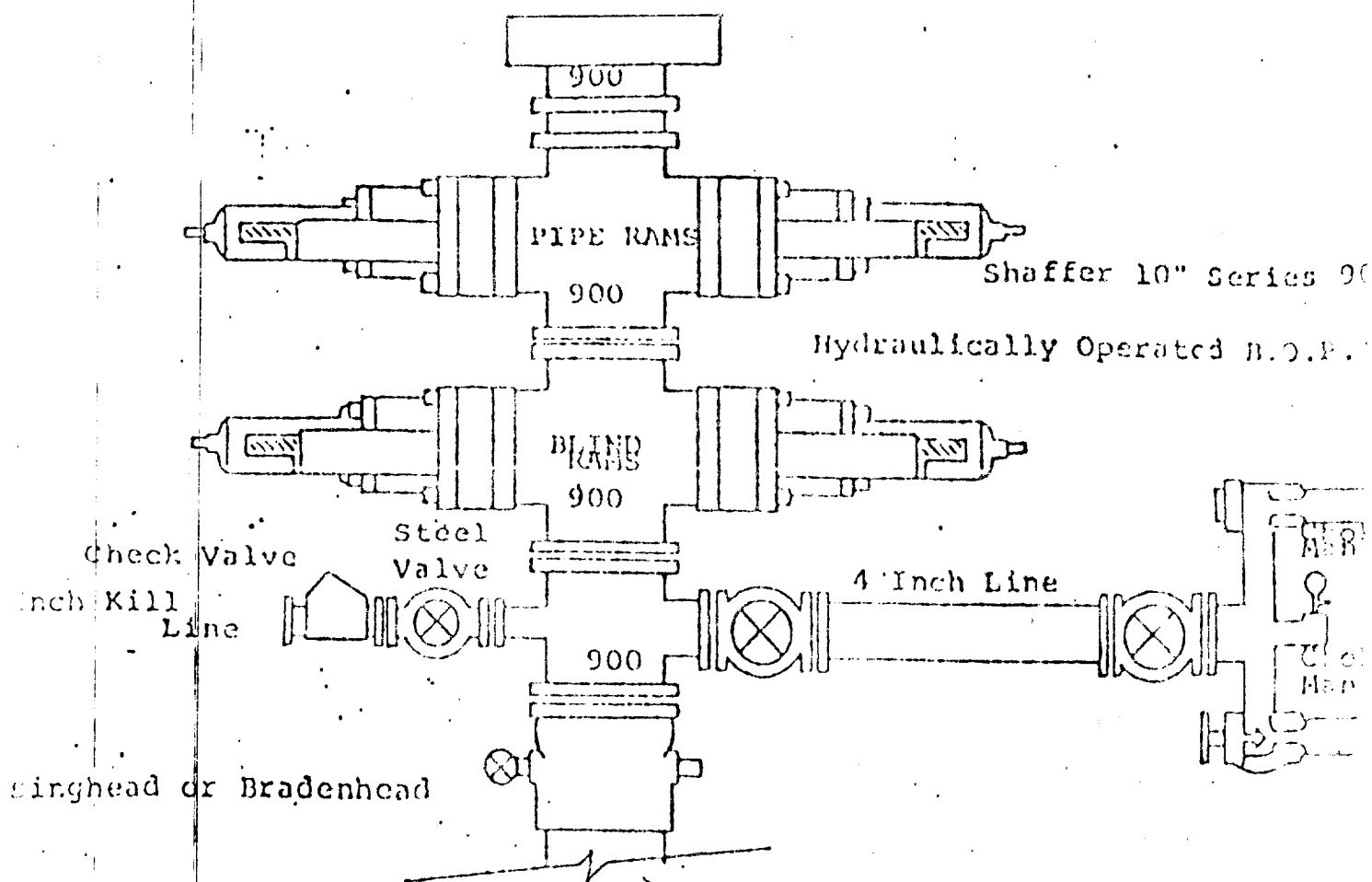
John W. West

Certificate No. JOHN W. WEST, 676
RONALD J. EIDSON, 3239

330 660 990 1320 1650 1980 2310 2640 2970 3300 3630 3960 4290 4620 4950 5280 5610 5940 6270 6600

RECEIVED
AUG 31 1983
O.C.D.
HOBBS OFFICE

RECEIVED
AUG 10 1983
O.C.D.
HOBBS OFFICE



FOLLOWING CONSTITUTE MINIMUM BLOWOUT PREVENTER REQUIREMENTS

- All preventers to be hydraulically operated with secondary manual control installed prior to drilling out from under casing.
- Choke outlet to be a minimum of 4" diameter.
- Kill line to be of all steel construction of 2" minimum diameter.
- All connections from operating manifolds to preventers to be all steel pipe or tube a minimum of one inch in diameter.
- The available closing pressure shall be at least 15% in excess of the required with sufficient volume to operate the B.O.P.'s.
- All connections to and from preventer to have a pressure rating equal to that of the B.O.P.'s.
- Inside blowout preventer to be available on rig floor.
- Operating controls located a safe distance from the rig floor.
- Hole must be kept filled on trips below intermediate casing. Operator not responsible for blowouts resulting from not keeping hole full.
- B. P. float must be installed and used below zone of first gas intrusion.

RECEIVED
AUG 31 1983
O.C.D.
HOBBS OFFICE

473